

Product datasheet for **RG217775**

ADAM28 (NM_014265) Human Tagged ORF Clone

Product data:

Product Type:	Expression Plasmids
Product Name:	ADAM28 (NM_014265) Human Tagged ORF Clone
Tag:	TurboGFP
Symbol:	ADAM28
Synonyms:	ADAM 28; eMDC II; eMDCII; MDC-L; MDCL
Mammalian Cell Selection:	Neomycin
Vector:	pCMV6-AC-GFP (PS100010)
E. coli Selection:	Ampicillin (100 ug/mL)



[View online »](#)

ORF Nucleotide Sequence:

>RG217775 representing NM_014265
 Red=Cloning site Blue=ORF Green=Tags(s)

TTTTGTAATACGACTCACTATAGGGCGGCCGGAATTCGTGCGACTGGATCCGGTACCGAGGAGATCTGCC
 GCC**CGCATCGCC**

ATGTTGCAAGGTCTCCTGCCAGTCAGTCTCCTCCTCTCTGTTGCAGTAAGTGCTATAAAAGAACTCCCTG
 GGGTGAAGAAGTATGAAGTGTTTATCCTATAAGACTTCATCCACTGCATAAAAGAGAGGCCAAAGAGCC
 AGAGCAACAGGAACAATTTGAAACTGAATTAAGTATAAAATGACAATTAATGAAAAATTGCAGTGCTT
 TATTTGAAAAAAAACAAGAACCTCCTTGACCAGGCTACACGGAAACATATTATAATCCACTGGAAAGG
 AGATCACCACAAGCCACAAATTATGGATGATTGTTATTATCAAGGACATATTCTTAATGAAAAGGTTTC
 TGACGCTAGCATCAGCACATGTAGGGTCTAAGGGGCTACTTCAGTCAGGGGGATCAAAGATACTTTATT
 GAACCTTTAAGCCCACATACATCGGGATGGACAGGAGCATGCCTTTCAAGTATAACCCTGATGAAAAGA
 ATTTATGACAGCACCTGTGGGATGGATGGTGTGTTGTGGGCCACGATTTGCAGCAGAACATTGCCCTACC
 TGCCACCAAACTAGTAAAATTGAAAGACAGGAAGTTTCAGGAACATGAGAAATACATAGAATATTATTTG
 GTCTGGATAATGGTGAGTTTAAAAGGTACAATGAGAATCAAGATGAGATCAGAAAAGAGGGTATTTGAGA
 TGGCTAATTATGTCAACATGCTTTATAAAAAGCTCAATACTCATGTGGCCTTAGTTGGTATGGAAATCTG
 GACTGACAAGGATAAGATAAAGATAACCCCAAATGCAAGCTTCACCTTGGAGAATTTTTCTAAATGGAGG
 GGGAGTGTCTCTCAAGAAGAAAGCGTCATGATATTGCTCAGTTAATCACAGCAACAGAACTTGCTGGAA
 CGACTGTGGGTCTTGCAATTTATGTCTACAATGTGTTCTCCTTATTCTGTTGGCGTTGTTCCAGGACCACAG
 CGATAATCTTCTTAGAGTTGCAGGGACAATGGCACATGAAATGGCCACAACCTTTGGAATGTTTCATGAC
 GACTATTCTTGAAGTGCCTTCTACAATATGTGTGATGGACAAAGCACTGAGCTTCTATATACCCACAG
 ACTTCAGTTCCTGCAGCGTCTCAGCTATGACAAGTTTTTTGAAGATAAATTATCAAATGGCCTCTTTAA
 TGCTCCATTGCCTACAGATATCATATCCACTCCAATTTGTGGAAACCAGTTGGTGGAAATGGGAGAGGAC
 TGTGATTGTGGGACATCTGAGGAATGTACCAATATTTGCTGTGATGCTAAGACATGTAATAACAAAGCAA
 CTTTTCAATGTGCATTAGGAGAATGTTGTGAAAAATGCCAATTTAAAAAGGCTGGGATGGTGTGCAGACC
 AGCAAAAGATGAGTGCAGCTGCCTGAAATGTGTAATGGTAAATCTGGTAATTGCCTGATGATAGATTC
 CAAGTCAATGGCTTCCCTTGCCATCACGGGAAGGGCCACTGCTTGATGGGACATGCCCCACACTGCAGG
 AGCAGTGCACAGAGCTGTGGGACCAGGAAGTGGTTGCAGATAAGTCATGTTACAACAGGAATGAAGG
 TGGGTCAAAGTACGGTACTGTGCGAGAGTGGATGACACACTCATTCCCTGCAAAGCAAATGATACCATG
 TGTGGAAAGTTGTTCTGTCAAGTGGTTCGGATAATTTGCCCTGGAAAGGACGGATAGTGACTTTCTCTGA
 CATGTAATAACATTTGATCCTGAAGACACAAGTCAAGAAATAGGCATGGTGGCCAATGGAAGTAAAGTGG
 CGATAACAAGGTTTGCAATTAATGCAGAATGTGTGGATATTGAGAAAGCCTACAAATCAACCAATTGCTCA
 TCTAAGTGCAAAGGACATGCTGTGTGTGACCATGAGCTCCAGTGTCAATGTGAGGAAGGATGGATCCCTC
 CCGACTGCGATGACTCCTCAGTGGTCTTCCACTTCTCCATTGTGGTTGGGGTGTCTTCCAATGGCGGT
 CATTTTTGTGGTGGTGTGATGGTAATCCGGCACCAGAGCTCCAGAGAAAAGCAGAAGAAAGATCAGAGG
 CCACTATCTACACTGGCACCAGGCCACAAAACAGAAGAGGAAACCCAGATGGTAAAGGCTGTTCAAC
 CCCAAGAGATGAGTCAGATGAAGCCCCATGTGTATGATCTGCCAGTAGAAGGCAATGAGCCCCAGCCTC
 TTTTCATAAAGACACAAACGCACCTCCCCCTACTGTTTTCAAGGATAATCCAATGTCTACACCTAAGGAC
 TCAAATCCAAAAGCA

ACGCGTACGCGGCCGCTCGAG – GFP Tag – GTTTAA

Protein Sequence: >RG217775 representing NM_014265
 Red=Cloning site Green=Tags(s)

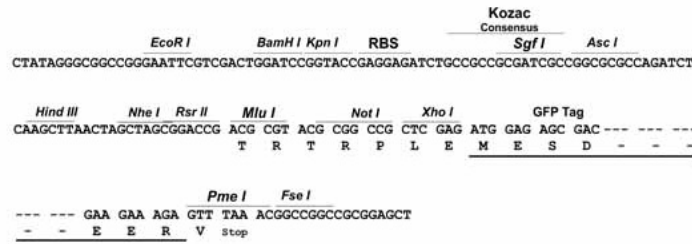
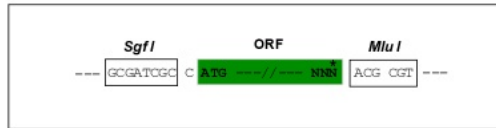
MLQGLLPVSLLLSVAVSAIKELPGVKKYEVVYPIRLHPLHKREAKEPEQQEQFETELKYKMTINGKIAVL
 YLKKKNKLLAPGYTETYNSTGKEITTSQIMDDCYQGHILNEKVSASISTCRGLRGYFSQGDQRFYI
 EPLSPIHRDQGEHALFKYNPDEKNYDSTCGMDGVLWAHDLQONIALPATKLVKLDKRVQEHEKYIEYYL
 VLDNGEFKRYNENQDEIRKRVFEMANYVNMLYKKLNTHVALVGMEIWTDKKIKITPNASFLENFSKWR
 GSVLSRRKRHDIAQLITATELAGTTVGLAFMSTMCSPPSVGVVQDHSNLLRVAGTMAHEMGNFMFHD
 DYSCKCPSTICVMDKALSFYIPTDFSSCSRLSYDKFFEDKLSNCLFNAPLPTDIIISTPICGNQLVEMGED
 CDCGTSEECTNICDAKTCKIKATFQCALGECCEKQCFKAGMVCRAKDECDLPEMNGKSGNCPDDR
 QVNGFPCHHGKGLMGTCPTEQCTELWGPTEVADKSCYNRNEGSKYGYCRRVDDTLIPCKANDTM
 CGKLFCCQGGSDNLPWKGRIVTFLTKTFDPEDTSQEIGMVANGTKCGDNKVCINAECVDIEKAYKSTNCS
 SKCKGHAVCDHELQCQCEEGWIPDCDDSSVVFHFHSIVVGVLPMAVIFVVVAMVIRHQSREKQKKDQR
 PLSTTGTTRPHKQKRKPQMVKAVQPQEMSQMKPHVYDLPVEGNEPPASFHKDTNALPPTVFKDNPMPKPKD
 SNPKA

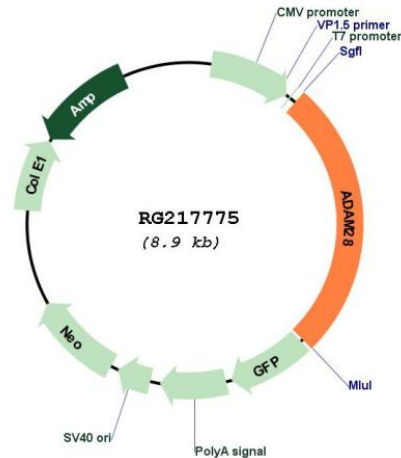
TRTRPLE - GFP Tag - V

Restriction Sites: SgfI-MluI

Cloning Scheme:

Cloning sites used for ORF Shuttling:



Plasmid Map:


ACCN: NM_014265

ORF Size: 2325 bp

OTI Disclaimer: Due to the inherent nature of this plasmid, standard methods to replicate additional amounts of DNA in *E. coli* are highly likely to result in mutations and/or rearrangements. Therefore, OriGene does not guarantee the capability to replicate this plasmid DNA. Additional amounts of DNA can be purchased from OriGene with batch-specific, full-sequence verification at a reduced cost. Please contact our customer care team at custsupport@origene.com or by calling 301.340.3188 option 3 for pricing and delivery.

The molecular sequence of this clone aligns with the gene accession number as a point of reference only. However, individual transcript sequences of the same gene can differ through naturally occurring variations (e.g. polymorphisms), each with its own valid existence. This clone is substantially in agreement with the reference, but a complete review of all prevailing variants is recommended prior to use. [More info](#)

OTI Annotation: This clone was engineered to express the complete ORF with an expression tag. Expression varies depending on the nature of the gene.

Components: The ORF clone is ion-exchange column purified and shipped in a 2D barcoded Matrix tube containing 10ug of transfection-ready, dried plasmid DNA (reconstitute with 100 ul of water).

Reconstitution Method:

1. Centrifuge at 5,000xg for 5min.
2. Carefully open the tube and add 100ul of sterile water to dissolve the DNA.
3. Close the tube and incubate for 10 minutes at room temperature.
4. Briefly vortex the tube and then do a quick spin (less than 5000xg) to concentrate the liquid at the bottom.
5. Store the suspended plasmid at -20°C. The DNA is stable for at least one year from date of shipping when stored at -20°C.

RefSeq: [NM_014265.3](#), [NP_055080.1](#)

RefSeq Size: 3220 bp

RefSeq ORF: 2328 bp

Locus ID: 10863

UniProt ID: [Q9UKQ2](#)

Cytogenetics: 8p21.2

Domains: Reprolysin, DISIN, Pep_M12B_propep, ACR

Protein Families: Druggable Genome, Protease, Secreted Protein, Transmembrane

Gene Summary: This gene encodes a member of the ADAM (a disintegrin and metalloprotease domain) family. Members of this family are membrane-anchored proteins structurally related to snake venom disintegrins, and have been implicated in a variety of biological processes involving cell-cell and cell-matrix interactions, including fertilization, muscle development, and neurogenesis. The protein encoded by this gene is a lymphocyte-expressed ADAM protein. This gene is present in a gene cluster with other members of the ADAM family on chromosome 8. Alternative splicing results in multiple transcript variants. [provided by RefSeq, Jan 2015]