

Product datasheet for **RG217764**

ROCK2 (NM_004850) Human Tagged ORF Clone

Product data:

Product Type:	Expression Plasmids
Product Name:	ROCK2 (NM_004850) Human Tagged ORF Clone
Tag:	TurboGFP
Symbol:	ROCK2
Synonyms:	ROCK-II
Mammalian Cell Selection:	Neomycin
Vector:	pCMV6-AC-GFP (PS100010)
E. coli Selection:	Ampicillin (100 ug/mL)
ORF Nucleotide Sequence:	>RG217764 representing NM_004850 Red=Cloning site Blue=ORF Green=Tags(s)

TTTTGTAATACGACTCACTATAGGGCGGCCGGAATTCGTCGACTGGATCCGGTACCGAGGAGATCTGCC
GCC**CGATCGCC**

ATGAGCCGGCCCCCGCCGACGGGAAAAATGCCCGGCCCGCCCGAGACCGCGCCGGGGACGGGGCAGGCG
CGAGCCGCGCAGAGGAAGCTGGAGGCGTGATCCGAGACCCTCGCTCCCCATCAACGTGGAGAGCTTGCT
GGATGGCTTAAATTCCTTGGTCTTGATTTAGATTTTCTGCTTTGAGGAAAAACAAGAATAGATAAT
TTCTTAAATAGATATGAGAAAAATGTGAAAAAATCAGAGGTCTACAGATGAAGGCAGAAGACTATGATG
TTGTAAGATTATTGGAAGAGGTGCTTTTGGTGAAGTGCAGTTGGTTCGTACAAGGCATCGCAGAAGGT
TTATGCTATGAAGCTTCTTAGTAAGTTTGAAATGATAAAAAGATCAGATTCTGCCTTTTTTGGGAAGAA
AGAGATATTATGGCCTTTGCCAATAGCCCTGGGTGGTTCAGCTTTTTTATGCCTTTCAAGATGATAGGT
ATCTGTACATGGTAATGGAGTACATGCCTGGTGGAGACCTTGAAACCTTATGAGTAATTATGATGTGCC
TGAAAAATGGGCCAAATTTTACACTGCTGAAGTTGTTCTTGCTCTGGATGCAATACACTCCATGGGTTTA
ATACACAGAGATGTGAAGCCTGACAACATGCTCTTGATAAACATGGACATCTAAAATTAGCAGATTTTG
GCACGTGATGAAGATGGATGAAACAGGCATGGTACATTGTGATACAGCAGTTGGAACACCGGATTATAT
ATCACCTGAGGTTCTGAAATCACAAGGGGGTGTGGTTTCTATGGGCGAGAATGTGATTGGTGGTCTGTA
GGTGTTCCTTTATGAGATGCTAGTGGGGGATACTCCATTTTATGCCGATTCACCTGTAGGAACATATA
GCAAAATTATGGATCATAAGAATTCAGTGTGTTCCCTGAAGATGCAGAAATTTCCAAACATGCAAGAA
TCTCATCTGTGCTTTCTAACAGATAGGGAGGTACGACTTGGGAGAAATGGGGTGAAGAAATCAGACAG
CATCCTTTCTTTAAGAATGATCAGTGGCATTGGGATAACATAAGAGAAACGGCAGCTCCTGTAGTACCTG
AACTCAGCAGTGACATAGACAGCAGCAATTTTCGATGACATTGAAGATGACAAAGGAGATGTAGAAACCTT
CCCAATTCCTAAAGCTTTTGTGGAAATCAGCTGCCTTTTCATCGGATTTACCTACTATAGAGAAAATTTA
TTATTAAGTGACTCTCCATCTTGTAGAGAACTGATTCCATACAATCAAGGAAAAATGAAGAAAGTCAAG
AGATTCAGAAAAAAGTATACATTAGAAGAACATCTTAGCAATGAGATGCAAGCCAAAGAGGAAGTGA
ACAGAAGTGCAAACTGTTAATACTCGCTAGAAAAACAGCAAAGGAGCTAGAAGAGGAGATTACCTTA



[View online »](#)

CGGAAAAGTGTGGAATCAGCATTAAAGACAGTTAGAAAAGAGAAAAGGCGCTTCTTCAGCACAAAAATGCAG
AATATCAGAGGAAAGCTGATCATGAAGCAGACAAAAACGAAATTTGGAAAATGATGTTAACAGCTTAAA
AGATCACTTGAAGATTTGAAAAAAGAAATCAAACTCTCAAATATCCACTGAGAAAAGTGAATCAACTC
CAGAGACAACGGATGAAACCAATGCTTACTGCGAACAGAGTCTGATACTGCAGCCCGTTAAGGAAAA
CCCAGGCAGAAAGTTCAAACAGATTGAGCAGCTGGAATCTAACAAATAGAGATCTACAAGATAAAAACTG
CCTGCTGGAGACTGCCAAGTTAAAAGTTGAAAAGGAATTTATCAATCTTCAGTCAGCTCTAGAATCTGAA
AGGAGGGATCGAACCCATGGATCAGAGATAATTAATGATTTACAAGGTAGAATATGTGGCCTAGAAGAAG
ATTTAAAGAACGGCAAAATCTTACTAGCGAAAAGTGAAGTGGAGAAGAGACAACCTTCAGGAGAGATTTAC
TGATTTGAAAAAGGAAAAAGCAACATGGAAAATAGATATGACATACCAACTAAAAAGTTATACAGCAGAGC
CTAGAACAAGAAGACTGAACATAAGGCCACAAAGGCACGACTAGCAGATAAAAAAAGATCTATGAGT
CCATCGAAGAAGCCAAATCAGAAGCCATGAAAAGAAATGGAGAAGAAGCTTTGGAGGAAAGAACTTAAA
ACAGAAAGTGGAGAACCTATTGCTAGAAGCTGAGAAAAGATGTTCTCTATTAGACTGTGACCTCAAACAG
TCACAGCAGAAAAATAATGAGCTCCTTAAACAGAAAGATGTGCTAAATGAGGATGTTAGAAACCTGACAT
TAAAAATAGAGCAAGAACTCAGAAGCGCTGCCTTACACAAAATGACCTGAAGATGCAAAACACAACAGGT
TAACACACTAAAAATGTCAGAAAAGCAGTTAAAGCAAGAAAATAACCATCTCATGAAAATGAAAATGAAC
TTGGAAAAACAAAATGCTGAACTTCGAAAAGAAGTCCAGGATGCAGATGGGCAAAATGAAAGAGCTCCAGG
ATCAGCTCGAAGCAGAACAGTATTTCTCAACCCTTTATAAAACACAAGTTAGGGAGCTTAAAGAAGAATG
TGAAGAAAAGACCAAACTTGGTAAAGAATTGCAGCAGAAGAAACAGGAATTACAGGATGAACGGGACTCT
TTGGCTGCCCAACTGGAGATCACCTTGACCAAAGCAGATTCTGAGCAACTGGCTCGTTCAATTGCTGAAG
ACAATATTCTGATTTGGAAAAAGAGAAGATCATGAAAGAGCTGGAGATCAAAGAGATGATGGCTAGACA
CAAACAGGAACCTACGGAAAAAGATGCTACAATTGCTTCTTTGAGGAACTAATAGGACACTAACTAGT
GATGTTGCCAATCTTGCAATGAGAAAAGAAATTAATAACAAATGAAAGATGTTCAAGAGCAACTGT
CAAGATGAAAGATGAAGAAAATAAGCGCAGCAGCTATTAAGCACAGTTTGAGAAGCAGCTATTAACAGA
AAGAACACTCAAACTCAAGCTGGAATAAGTTGGCTGAGATCATGAATCGAAAAGAACCTGCAAGCGT
GGTAATGACACAGATGTGCGGAGAAAAGAGAAGGAGAATAGAAAGCTACATATGGAGCTTAAATCTGAAC
GTGAGAAATTGACCCAGCAGATGATCAAGTATCAGAAAAGAACTGAATGAAATGCAGGCACAAATAGCTGA
AGAGAGCCAGATTGCAATTGAACTGCAGATGACATTGGACAGTAAAGACAGTGCATTGAGCAGCTGCGG
TCACAACCTCAAGCCTTGATATTGGTCTGGATAGTTCAGTATAGGCAGTGGACCAGGGGATGCTGAGG
CAGATGATGGGTTTCCAGAATCAAGATTAGAAGGATGGCTTTTATTGCCTGTACGAAACAACACTAAGAA
ATTTGGATGGGTTAAAAAGTATGTGATTGTAAGCAGTAAGAAGATTCTTTTCTATGACAGTGAACAAGAT
AAAGAACAATCCAATCCTTACATGGTTTTAGATATAGACAAGTTATTTTCTGTCCGACCAGTTACACAGA
CAGATGTGTATAGAGCAGATGCTAAAGAAATCCAAGGATATTCCAGATTCTGTATGCCAATGAAGGAGA
AAGTAAGAAGGAACAAGAATTTCCAGTGGAGCCAGTTGGAGAAAAATCTAATTATATTTGCCACAAGGGA
CATGAGTTTATTCCTACTCTTTATCATTCCCAACCAACTGTGAGGCTTGTATGAAGCCCCTGTGGCACA
TGTTTAAGCCTCCTCCTGCTTTGGAGTGCCGCCGTTGCCATTAAGTGTATAAAGATCATATGGACAA
AAAGGAGGAGATTATAGCACCTTGCAAAGTATATTATGATATTTCAACGGCAAAGAATCTGTTATTACTA
GCAAAATCTACAGAAGAGCAGCAGAAGTGGGTTAGTCGGTTGGTAAAAAGATACCTAAAAAGCCCCAG
CTCCAGACCCTTTGCCCGATCATCTCTAGAAGTCAATGAAGATACAGCAAAACCAAGTCTATTAGACG
GCCAAGTCGACAGCTTGCCCAACAAACCTAGC

ACGCGTACGCGGCCGCTCGAG - GFP Tag - GTTTAA

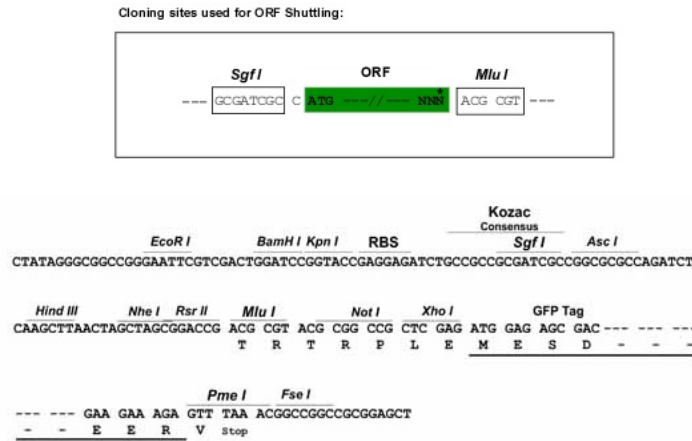
Protein Sequence: >RG217764 representing NM_004850
 Red=Cloning site Green=Tags(s)

MSRPPPTGKMPGAPETAPGDGAGASRQRKLEALIRDPRSPINVESLLDGLNSLVLDLDFPALRKNKNIDN
 FLNRYEKIVKKIRGLQMKAEYDVVKVIGRGAFGEVQLVRHKASQKVYAMKLLSKFEMIKRSDSAFFWEE
 RDIMAFANSPWVQLFYAFQDDRYLYMVMEYMPGGDLVNLMSNYDVPEKAKFYTAEVLLALDAIHSMGL
 IHRDVKPDNMLLDKHHGLKLADFGTCMKMDETGMVHCDAVGTDPDIISPEVLKSSQGGDFYGRECDWWSV
 GVFLYEMLVGDTPFYADSLVGTYSKIMDHKNSLCFPEDAIEISKHAKNLICAFLLTDREVLRNGVVEIRQ
 HPFFKNDQWHWDNIRETAAPVVPELSSDIDSSNFDDIEDDKGDVETFPPIKAFVGNQLPFIGFTYYRENL
 LLSDSPSCRETDSIQSRKNEESQEIQKKLYLLEEHLNEMQAKEELEQKCKSVNTRLEKTAKEEEEEITL
 RKSVESALRQLEREKALLQHNAEYQRKADHEADKRNLENDVNSLKDQLEDLKKRNQNSQISTEKVNQL
 QRQLDETALLRTESDTAARLRKTAESSKQIQQLESNNRDLQDKNCLLETAKLKLEKEFINLQSALESE
 RRDRTHGSEIINDLQGRICGLEEDLKNGKILLAKVELEKRQLQERFTDLEKEKSNMEIDMTYQLKVIQSS
 LEQEEAEHKATKARLADKNKIYESIEEAKSEAMKEMEKLLLEERTLKQKVENLLLEAEKRCSLLDCDLKQ
 SQQKINELLKQKVDVLDVNRNLTLKIEQETQKRCLETQNDLKMQTQQVNTLKMSEKQLKQENNHLMEMKMN
 LEKQNAELRKERQDADGQMKELQDQLEAEQYFSTLYKTQVRELKEECEEKTKLKGELQKQKQELQDERDS
 LAAQLEITLTKADSEQLARSAIEEQYSLEKEKIMKELEIKEMMARHKQELTEKDATIASLEETNRTLTS
 DVANLANEKEELNNKLDVQEQLSRLKDEEISAAAIIKAQFEKQLLTERTLKTQAVNKLAEIMNRKEPVKR
 GNDTDVRRKEKENRKLHMLKSEREKL TQMIKYQKELNEMQAQIAEESQIRIELQMTLDSKSDSIEQLR
 SQLQALHIGLDSISSIGSGPGDAEADDGFPESTRLEGWLSLPVRNNTKFGWVKYVIVSSKILFYDSEQD
 KEQSNPYMVLIDIKLFHVRPVTQTDVYRADAKEIPRIFQILYANEGESKKEQEPVPEVGEKSNIYCHKG
 HEFIPTLYHFPTNCEACMKPLWHMFKPPPALCRRCHIKCHKDHMDKKEEIIAPCKVYYDIISTAKNLLLL
 ANSTEEQQKWVSRLLVKKIPKKPPAPDPFARSSPRTSMKIQQNQSIIRRPQRQLAPNKPS

TRTRPLE - GFP Tag - V

Restriction Sites: SgfI-MluI

Cloning Scheme:

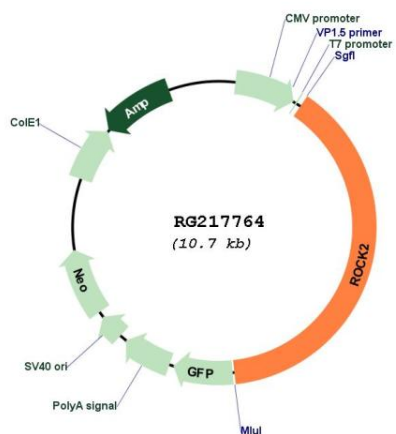


ACCN: NM_004850

ORF Size: 4164 bp

OTI Disclaimer:	Due to the inherent nature of this plasmid, standard methods to replicate additional amounts of DNA in E. coli are highly likely to result in mutations and/or rearrangements. Therefore, OriGene does not guarantee the capability to replicate this plasmid DNA. Additional amounts of DNA can be purchased from OriGene with batch-specific, full-sequence verification at a reduced cost. Please contact our customer care team at custsupport@origene.com or by calling 301.340.3188 option 3 for pricing and delivery.
	The molecular sequence of this clone aligns with the gene accession number as a point of reference only. However, individual transcript sequences of the same gene can differ through naturally occurring variations (e.g. polymorphisms), each with its own valid existence. This clone is substantially in agreement with the reference, but a complete review of all prevailing variants is recommended prior to use. More info
OTI Annotation:	This clone was engineered to express the complete ORF with an expression tag. Expression varies depending on the nature of the gene.
Components:	The ORF clone is ion-exchange column purified and shipped in a 2D barcoded Matrix tube containing 10ug of transfection-ready, dried plasmid DNA (reconstitute with 100 ul of water).
Reconstitution Method:	<ol style="list-style-type: none"> 1. Centrifuge at 5,000xg for 5min. 2. Carefully open the tube and add 100ul of sterile water to dissolve the DNA. 3. Close the tube and incubate for 10 minutes at room temperature. 4. Briefly vortex the tube and then do a quick spin (less than 5000xg) to concentrate the liquid at the bottom. 5. Store the suspended plasmid at -20°C. The DNA is stable for at least one year from date of shipping when stored at -20°C.
RefSeq:	NM_004850.5
RefSeq Size:	6401 bp
RefSeq ORF:	4167 bp
Locus ID:	9475
UniProt ID:	Q75116
Cytogenetics:	2p25.1
Domains:	pkinase, HR1, PH, M
Protein Families:	Druggable Genome, Protein Kinase
Protein Pathways:	Axon guidance, Chemokine signaling pathway, Focal adhesion, Leukocyte transendothelial migration, Pathogenic Escherichia coli infection, Regulation of actin cytoskeleton, TGF-beta signaling pathway, Vascular smooth muscle contraction, Wnt signaling pathway
Gene Summary:	The protein encoded by this gene is a serine/threonine kinase that regulates cytokinesis, smooth muscle contraction, the formation of actin stress fibers and focal adhesions, and the activation of the c-fos serum response element. This protein, which is an isozyme of ROCK1 is a target for the small GTPase Rho. [provided by RefSeq, Jul 2008]

Product images:



Circular map for RG217764