

Product datasheet for **RG217763**

ING1 (NM_198219) Human Tagged ORF Clone

Product data:

Product Type:	Expression Plasmids
Product Name:	ING1 (NM_198219) Human Tagged ORF Clone
Tag:	TurboGFP
Symbol:	ING1
Synonyms:	p24ING1c; p33; p33ING1; p33ING1b; p47; p47ING1a
Mammalian Cell Selection:	Neomycin
Vector:	pCMV6-AC-GFP (PS100010)
E. coli Selection:	Ampicillin (100 ug/mL)
ORF Nucleotide Sequence:	>RG217763 representing NM_198219 Red=Cloning site Blue=ORF Green=Tags(s)

TTTTGTAATACGACTCACTATAGGGCGGCCGGAATTCGTCGACTGGATCCGGTACCGAGGAGATCTGCC
GCC**CGATCGCC**

ATGTTGAGTCCTGCCAACGGGGAGCAGCTCCACCTGGTGAACATGTGGAGGACTACCTGGACTCCATCG
AGTCCCTGCCTTCGACTTGCAGAGAAATGTCTCGCTGATGCGGGAGATCGACGCGAAATACCAAGAGAT
CCTGAAGGAGCTAGACGAGTGCTACGAGCGCTCAGTCGCGAGACAGACGGGGCGCAGAAGCGCGGATG
CTGCACTGTGTGACGCGCGCTGATCCGACGCCAGGAGCTGGGCGACGAGAAGATCCAGATCGTGAGCC
AGATGGTGGAGCTGGTGGAGAACCACGCGCGCAGGTGGACAGCCACGTGGAGCTGTTTCGAGGCGCAGCA
GGAGCTGGGCGACACAGCGGGCAACAGCGCAAGGCTGGCGCGGACAGGCCAAAGGCGAGGCGGCAGCG
CAGGCTGACAAGCCCAACAGCAAGCGCTCACGGCGGCAGCGCAACAACGAGAACCCTGAGAACCGCTCCA
GCAACCACGACCACGACGACGGCGCCTCGGGCACACCCAAGGAGAAGAAGGCCAAGACCTCCAAGAAGAA
GAAGCGCTCCAAGGCCAAGGCGGAGCGAGAGGCGTCCCCGACCTCCCCATCGACCCCAACGAACCC
ACGTAAGTGTCTGTGCAACCAGGTCTCCTATGGGGAGATGATCGGCTGCGACAACGACGAGTGCCCATCG
AGTGGTTCCACTTCTCGTGCGTGGGGCTCAATCATAAACCCAAGGCAAGTGGTACTGTCCCAAGTGCCG
GGGGGAGAACGAGAAGACCATGGACAAAGCCCTGGAGAAATCCAAAAAGAGAGGGCTTACAACAGG

AGCGGACCGACGCGTACGCGGCCGCTCGAG - GFP Tag - GTTTAA



[View online »](#)

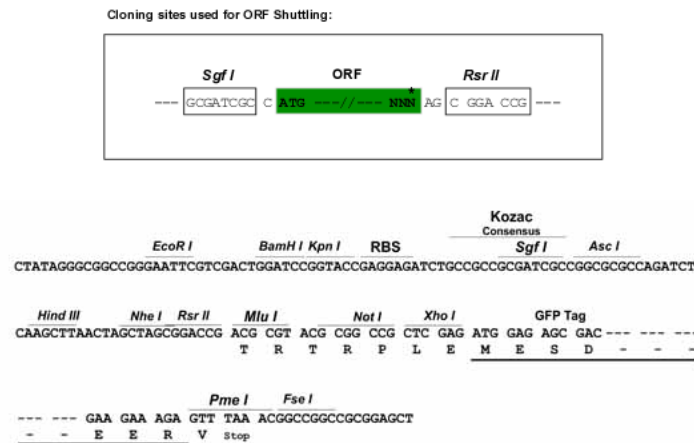
Protein Sequence: >RG217763 representing NM_198219
 Red=Cloning site Green=Tags(s)

MLSPANGQLHLVNYVEDYLDIESLPFDLQRNVSLMREIDAKYQEILKELDECYERFSRETGDAQKRRM
 LHCVQRALIRSQELGDEKIQIVSQMVVELVENRTRQVDSHVELFEAQQLGDTAGNSGKAGADRPKGEAAA
 QADKPNKRSRRQRNNENRENASSNHDDHDDGASGTPKEKKAKTSKKKKRSKAKAEREASPADLPIDPNEP
 TYCLCNQVSYGEMIGCDNDECEIWFHFSCVGLNHHKPKGKWKYCPKCRGENEKTMDKALEKSKKERAYNR

SGPTRRRLE - GFP Tag - V

Restriction Sites: SgfI-RsrII

Cloning Scheme:



ACCN: NM_198219

ORF Size: 837 bp

OTI Disclaimer: The molecular sequence of this clone aligns with the gene accession number as a point of reference only. However, individual transcript sequences of the same gene can differ through naturally occurring variations (e.g. polymorphisms), each with its own valid existence. This clone is substantially in agreement with the reference, but a complete review of all prevailing variants is recommended prior to use. [More info](#)

OTI Annotation: This clone was engineered to express the complete ORF with an expression tag. Expression varies depending on the nature of the gene.

Components: The ORF clone is ion-exchange column purified and shipped in a 2D barcoded Matrix tube containing 10ug of transfection-ready, dried plasmid DNA (reconstitute with 100 ul of water).

Reconstitution Method:

1. Centrifuge at 5,000xg for 5min.
2. Carefully open the tube and add 100ul of sterile water to dissolve the DNA.
3. Close the tube and incubate for 10 minutes at room temperature.
4. Briefly vortex the tube and then do a quick spin (less than 5000xg) to concentrate the liquid at the bottom.
5. Store the suspended plasmid at -20°C. The DNA is stable for at least one year from date of shipping when stored at -20°C.

RefSeq: [NM_198219.3](#)

RefSeq Size: 2897 bp

RefSeq ORF: 840 bp

Locus ID: 3621

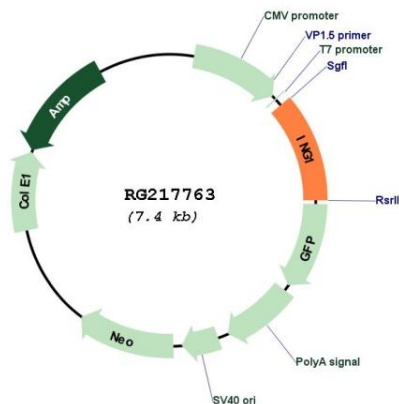
UniProt ID: [Q9UK53](#)

Cytogenetics: 13q34

Protein Families: Druggable Genome, Transcription Factors

Gene Summary: This gene encodes a tumor suppressor protein that can induce cell growth arrest and apoptosis. The encoded protein is a nuclear protein that physically interacts with the tumor suppressor protein TP53 and is a component of the p53 signaling pathway. Reduced expression and rearrangement of this gene have been detected in various cancers. Multiple alternatively spliced transcript variants encoding distinct isoforms have been reported. [provided by RefSeq, Jul 2008]

Product images:



Circular map for RG217763