

Product datasheet for **RG217724**

DEFB124 (NM_001037500) Human Tagged ORF Clone

Product data:

Product Type: Expression Plasmids
Product Name: DEFB124 (NM_001037500) Human Tagged ORF Clone
Tag: TurboGFP
Symbol: DEFB124
Synonyms: DEFB-24
Mammalian Cell Selection: Neomycin
Vector: pCMV6-AC-GFP (PS100010)
E. coli Selection: Ampicillin (100 ug/mL)
ORF Nucleotide Sequence: >RG217724 representing NM_001037500
Red=Cloning site Blue=ORF Green=Tags(s)

TTTTGTAATACGACTCACTATAGGGCGGCCGGAATTCGTCGACTGGATCCGGTACCGAGGAGATCTGCC
GCC**CGATCGCC**

ATGACACAGCTGCTTCTGTTCTTGTGGCTCTCCTGGTTCTGGGTCATGTGCCATCAGGGAGAAGTGAAT
TCAAACGGTGCTGGAAGGGTCAAGGGCCCTGCCAACTTACTGCACAAGGCAAGAACTTACATGCACCT
GTGCCCGGATGCGTCCCTGTGCTGTCTCCTATGCATTGAAACCTCCACCGTCCCAAGCATGAATAT
GAG

ACGCGTACGCGGCCGCTCGAG - GFP Tag - GTTTAA

Protein Sequence: >RG217724 representing NM_001037500
Red=Cloning site Green=Tags(s)
MTQLLLFLVALLVLGHVPSGRSEFKRCWKQGACQTYCTRQETYMHLCPDASLCCLSYALKPPPVPKHEY
E

TRTRPLE - GFP Tag - V

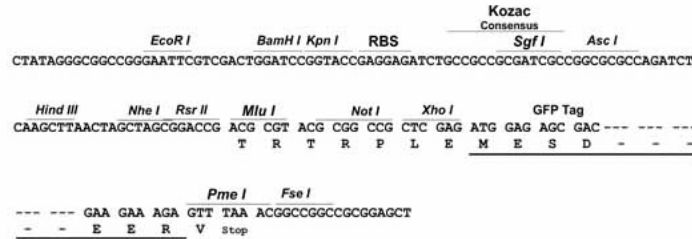
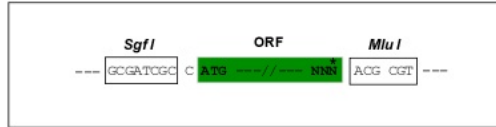
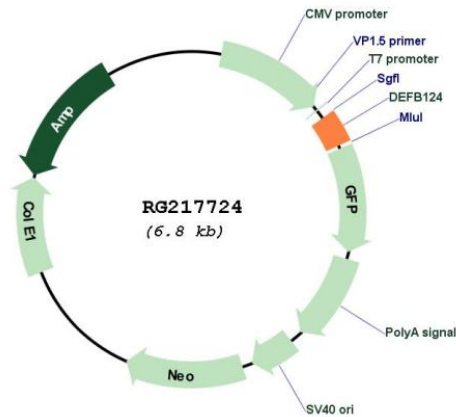
Restriction Sites: SgfI-MluI



[View online »](#)

Cloning Scheme:

Cloning sites used for ORF Shutting:


Plasmid Map:

ACCN: NM_001037500

ORF Size: 213 bp

OTI Disclaimer: The molecular sequence of this clone aligns with the gene accession number as a point of reference only. However, individual transcript sequences of the same gene can differ through naturally occurring variations (e.g. polymorphisms), each with its own valid existence. This clone is substantially in agreement with the reference, but a complete review of all prevailing variants is recommended prior to use. [More info](#)

OTI Annotation:	This clone was engineered to express the complete ORF with an expression tag. Expression varies depending on the nature of the gene.
Components:	The ORF clone is ion-exchange column purified and shipped in a 2D barcoded Matrix tube containing 10ug of transfection-ready, dried plasmid DNA (reconstitute with 100 ul of water).
Reconstitution Method:	<ol style="list-style-type: none">1. Centrifuge at 5,000xg for 5min.2. Carefully open the tube and add 100ul of sterile water to dissolve the DNA.3. Close the tube and incubate for 10 minutes at room temperature.4. Briefly vortex the tube and then do a quick spin (less than 5000xg) to concentrate the liquid at the bottom.5. Store the suspended plasmid at -20°C. The DNA is stable for at least one year from date of shipping when stored at -20°C.
RefSeq:	NM_001037500.1 , NP_001032589.1
RefSeq Size:	216 bp
RefSeq ORF:	216 bp
Locus ID:	245937
UniProt ID:	Q8NES8
Cytogenetics:	20q11.21
Protein Families:	Secreted Protein
Gene Summary:	Defensins are cysteine-rich cationic polypeptides that are important in the host immunologic response to invading microorganisms. This antimicrobial protein is secreted and is a member of the beta defensin protein family. Beta defensin genes are found in several clusters throughout the genome, with this gene mapping to a cluster at 20q11.1. The encoded protein may serve to enhance innate immunity in the prostate. [provided by RefSeq, Nov 2014]