

Product datasheet for **RG217680**

Collagen IV (COL4A5) (NM_000495) Human Tagged ORF Clone

Product data:

Product Type:	Expression Plasmids
Product Name:	Collagen IV (COL4A5) (NM_000495) Human Tagged ORF Clone
Tag:	TurboGFP
Symbol:	COL4A5
Synonyms:	ASLN; ATS; ATS1; CA54
Mammalian Cell Selection:	Neomycin
Vector:	pCMV6-AC-GFP (PS100010)
E. coli Selection:	Ampicillin (100 ug/mL)
ORF Nucleotide Sequence:	>RG217680 representing NM_000495 Red=Cloning site Blue=ORF Green=Tags(s)

TTTTGTAATACGACTCACTATAGGGCGGCCGGAATTCGTCGACTGGATCCGGTACCGAGGAGATCTGCC
GCC**CGATCGCC**

ATGAAACTGCGTGGAGTCAGCCTGGCTGCCGGCTTGTCTTACTGGCCCTGAGTCTTTGGGGGCAGCCTG
CAGAGGCTGCGGCTTGCTATGGGTGTTCTCCAGGATCAAAGTGTGACTGCAGTGGCATAAAAGGGGAAAA
GGGAGAGAGAGGGTTTCCAGGTTTGAAGGACACCCAGGATTGCCTGGATTTCCAGGTCCAGAAGGGCCT
CCGGGGCCTCGGGACAAAAGGGTGATGATGGAATTCAGGGCCACCCAGGACAAAAGGAATCAGAGGTC
CTCCTGGACTTCTGGATTTCCAGGGACACCCAGGTCCTCTGGAATGCCAGGCCACGATGGGGCCCCAGG
ACCTCAAGGTATTCCTGGATGCAATGGAACCAAGGGAGAACGTGGATTTCCAGGCCAGTCCCAGTCTTCT
GGTTTACAGGGTCTCCAGGACCCCTGGGATCCAGGTATGAAGGGTGAACCAGGTAGTATAATTATGT
CATCACTGCCAGGACCAAAGGGTAATCCAGGATATCCAGGTCCTCCTGGAATACAAGGCCTACCTGGTCC
CACTGGTATACCAGGGCAATTGGTCCCCAGGACCACCCAGGTTTGTGGGCCCTCCTGGTCCACCAGGA
CTTCCAGGACCTAAGGGGAATATGGGCTTAAATTTCCAGGGACCCAAAGGTGAAAAGGTGAGCAAGGTC
TTCAGGGCCACCTGGGCCACCTGGGCAGATCAGTGAACAGAAAAGCAATTGATGTAGAGTTTCAGAA
AGGAGATCAGGGACTTCTGGTGACCGAGGGCTCCTGGACCTCCAGGGATACGTGGTCTCCAGGTCCC
CCAGTGGTGAGAAAGGTGAGAAGGGTGAGCAAGGAGAGCCAGGCAAAAGAGGTAACCAGGCAAAAGATG
GAGAAAATGGCCAACCAGGAATTCCTGGTTTGCCTGGTGATCCTGGTTACCCTGGTGAACCCGGAAGGGA
TGGTAAAAGGGCCAAAAGGTGACACTGGCCACCTGGACCTCCTGGACTTGTAAATTCCTAGACCTGGG
ACTGGTATAACTATAGGAGAAAAAGGAAACATTGGGTTGCCTGGGTTGCCTGGAGAAAAAGGAGAGCGAG
GATTTCTGGAATACAGGGTCCACCTGGCCTTCTGGACCTCCAGGGGCTGCAGTTATGGGTCTCCTGG
CCCTCCTGGATTTCTGGAGAAAGGGTGCAGAAAGGTGATGAAGGACCACCTGGAATTTCCATTCTGGA
CCTCCTGGACTTGACGGACAGCCTGGGGCTCCTGGGCTTCCAGGGCTCCTGGCCCTGCTGGCCCTCACA
TTCTCCTAGTGATGAGATATGTGAACCCAGGCCCTCCAGGCCCCAGGATCTCCAGGTGATAAAGGACT
CCAAGGAGAAACAAGGAGTAAAGGTGACAAAGGTGACACTTGCTTCAACTGCATTGGAACCTGGTATTTC



[View online »](#)

GGGCTCCAGGTCAACCTGGTTTGCCAGGTCTCCAGGTCTCCAGGATCTCTTGTTTCCCTGGACAGA
AAGGGGAAAAAGGACAAGCTGGTGCAACTGGTCCCAAAGGATTACCAGGCATTCCAGGAGCTCCAGGTGC
TCCAGGCTTTCTGGATCTAAAGGTGAACCTGGTGATACCTCACTTTTCCAGGAATGAAGGGTGACAAA
GGAGAGTTGGGTTCCCTGGAGCTCCAGGGCTTCTGGTTACCTGGCACTCCTGGACAGGATGGATTGC
CAGGGCTTCTGGCCGAAAGGAGAGCCTGGTGAATTAAGGGTAAAGAGGTCCCCTGGGAA
CCCAGGTTTACCAGGCCTCCAGGGAATATAGGCCTATGGTCCCCTGGTTTCGGCCCTCCAGGCCA
GTAGGTGAAAAAGGCATACAAGGTGTGGCAGGAAATCCAGGCCAGCCAGGAATACCAGGTCTAAAGGGG
ATCCAGGTCAGACTATAACCCAGCCGGGAAGCCTGGCTTGCCTGGTAACCCAGGCAGAGATGGTGATGT
AGGTCTTCCAGGTGACCCTGGACTTCCAGGGCAACCAGGCTTGGCAGGGATACCTGGTAGCAAAGGAGAA
CCAGGTATCCCTGGAATTGGGCTTCTGGACCCTGGTCCCAAAGGCTTCTGGAATTCCAGGACCTC
CAGGAGCACCTGGGACACCTGGAAGAATTGGTCTAGAAGGCCCTCTGGGCCACCCGGCTTCCAGGACC
AAAGGGTGAACCAGGATTTGCATTACCTGGCCACCTGGGCCACCAGGACTTCCAGGTTTCAAAGGAGCA
CTTGGTCCAAAAGGTGATCGTGGTTTCCAGGACCTCCGGTCTCCAGGACGACTGGCTTAGATGGGC
TCCCTGGACAAAAGGTGATGTTGGACCAATGGACAACCTGGACCAATGGGACCTCTGGGCTGCCAGG
AATAGGTGTTCAAGGACCACCAGGACCACCAGGATTCTGGGCCAATAGGTCAACCTGGTTTACATGGA
ATACCAGGAGAGAAGGGGATCCAGGACCTCTGGACTTGATGTTCCAGGACCCCAAGGTGAAAGAGGCA
GTCCAGGGATCCCAGGACACCTGGTCTATAGGACCTCCAGGATCACCAGGGCTTCCAGGAAAAGCAGG
TGCTCTGGATTTCCAGGTACCAAAGGTGAAATGGGTATGATGGGACCTCCAGGCCACCAGGACCTTTG
GGAATCTCTGGCAGGAGTGGTGTACCTGGTCTTAAAGGTGATGATGGCTTGCAGGGTCAGCCAGGACTTC
CTGGCCCTACAGGAGAAAAAGGTAGTAAAGGAGAGCCTGGCTTCCAGGCCCTCTGGACCAATGGATCC
AAATCTTCTGGCTCAAAGGAGAGAAGGGGAACCTGGCTTACCAGGTATACCTGGAGTTTCAAGGGCA
AAAGGTTATCAGGTTTTCCTGGAGACCCAGGGCAACCTGGACTGAGTGGACAACCTGGATTACCAGGAC
CACCAGTCCCAAAGGTAAACCTGGTCTCCCTGGACAGCCAGGTTTATAGGACCTCTGGACTTAAAGG
AACCATCGGTGATATGGGTTTTCCAGGGCTCAGGGTGTGGAAGGGCTCCTGGACCTTCTGGAGTTCT
GGACAACCTGGTCCCAGGATTACCTGGACAGAAAGGCACAAAGGTGATCCTGGTATTCAAGCATTG
GTCTTCCAGGTCTTCTGGTCCAAAGGTGAGCCTGGTCTGCCTGGATACCCAGGGAACCTGGTATCAA
AGGTTCTGTGGGAGATCTGGTTTGCCCGGATTACCAGGAACCCCTGGAGCAAAGGACAACCAGGCCTT
CCTGGATTCCCAGGAACCCAGGCCCTCTGGACAAAAGGTATTAGTGGCCCTCTGGGAACCCCGGCC
TCCAGGAGAACCTGGTCTGTAGTGGTGGAGGTCATCTGGGCAACCAGGGCTCCAGGCGAAAAAGG
CAAACCCGGTCAAGATGGTATTCTGGACCAGCTGGACAGAAGGGTGAACCAGGTCAACCAGGCTTTGGA
AACCCAGGACCCCTGGACTTCCAGGACTTCTGGCCAAAAGGGTATGGAGGATTACCTGGGATCCAG
GAAATCTGGCCTTCCAGGTCCAAAGGGCGAACAGGCTTTCACGGTTTCCCTGGTGTGCAGGGTCCCC
AGGCCCTCTGGTTCTCCGGTCCAGCTCTGGAAGGACCTAAAGGCAACCTGGGCCCAAGGCTCTCT
GGGAGACCAGGTCTACCAGTCCAGAAGGTCTCCAGGTCTCCCTGGAATGGAGGTATTAAGGAGAGA
AGGGAAATCCAGGCCAACCTGGGCTACCTGGCTTGCCTGGTTTGAAGGAGATCAAGGACCACCAGGACT
CCAGGGTAATCTGGCCGGCCGGTCTCAATGGAATGAAAGGAGATCCTGGTCTCCCTGGTGTCCAGGA
TCCCAGGCATGAAAGGACCCAGTGGAGTACCTGGATCAGCTGGCCCTGAGGGGGAACCCGGGACTTATTG
GTCCTCCAGGTCTCTGGATTACCTGGTCTTCCAGGACAGATATCATAATTAAGGAGATGCTGGTCC
TCCAGGAATCCCTGGCCAGCCTGGGCTAAAGGGTCTACCAGGACCCCAAGGACCTCAAGGCTTACCAGGT
CCAATGGCCCTCCAGGAGATCCTGGACGCAATGGACTCCTGGCTTGTGATGGTGCAGGAGGGCGAAAG
GAGACCCAGTCTGCCAGGACAGCCAGGTACCCGTGGTTTGGATGGTCCCCTGGTCCAGATGGATTGCA
AGGTCCCCAGGTCCCCCTGGAACCTCCTCTGTTGCACATGGATTTCTTATTACACGCCACAGCCAGACA
ACGGATGCACCACAATGCCACAGGGAACACTTCAGGTCTATGAAGGCTTTTCTCTCTGTATGTACAAG
GAAATAAAGAGCCACGGTCAAGACTTGGGGACGGCTGGCAGCTGCCTTCGTGCTTTAGTACCATGCC
TTTCATGTTCTGCAACATCAATAATGTTTGAACCTTGTCTCAAGAAATGACTATTCTTACTGGCTCTCT
ACCCAGAGCCCATGCCAATGAGCATGCAACCCCTAAAGGGCCAGAGCATCCAGCCATTCATTAGTCGAT
GTGCGATATGTGAAGCTCCAGCTGTGGTATCGCAGTTCACAGTCAGACGATCCAGATCCCCATTGTCC
TCAGGGATGGGATTCTCTGTGGATTGGTTATTCCTTCATGATGCATACAAGTGCAGGGGCAAGGCTCA
GGTCAAGCCCTAGCTCCCCTGGTTCTGCTTGGAAAGGTTTCGTTACAGTCCCTTCATCGAATGTCATG
GGAGGGGTACCTGTAACACTATGCCAACTCCTACAGCTTTTGGCTGGCAACTGTAGATGTGCAGACAT
GTTTCAGTAAACCTCAGTCAGAAACGCTGAAAGCAGGAGACTTGAGGACACGAATTAGCCGATGTCAAGTG
TGCATGAAGAGGACA

ACGCGTACGCGGCCGCTCGAG – GFP Tag – GTTTAA

Protein Sequence:

>RG217680 representing NM_000495
 Red=Cloning site Green=Tags(s)

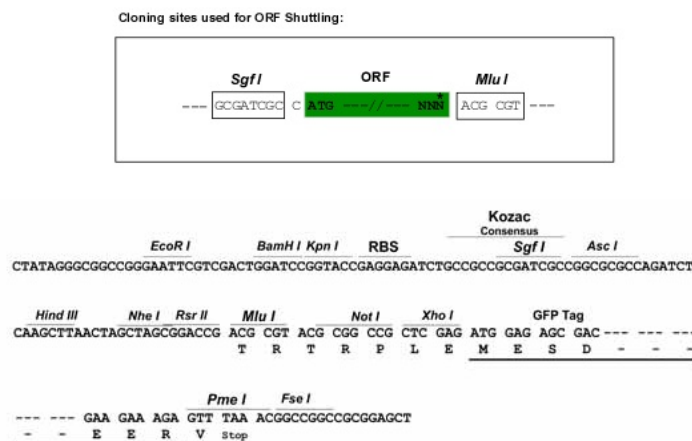
MKLRGVSLAAGLFLALSLWGQPAEAAACYGCSPGSKCDCSGIKGEKGERGFPGLEGHPGLPGFPGPEGP
 PGRGQKGDGIPGPPGPKGIRGPPGLPGFPGTGLPGMPGHDGAPGPQIGPCNGTKGERGFPSPGPF
 GLQGGPPGPIPMKGEPSIIMSSLPGPKGNPGYPPPIQGLPGTGPPIGPPGPPGLMGGPPPPG
 LPGPKGNMGLNFQGPKGEKGEQQLQGGPPPGQISEQKRPIDVEFQKGDQGLPGDRGPPGPPGIRGPPG
 PGGEKGEKGEQGEKGRKPKGKDGENGQPIGGLPGDPGYPGEPGRDGEKQKGDTPGPPGPPGLVIPRPG
 TGITIGEKGNIPLPGLPEKGERGFGIQQPGLPGPPGAAVMGPPGPPGPPGERGQKGDGEGPPGISIPG
 PPLDQPGAPGLPGPPGAPPHIPPDEICEPGGPPGSPGDKLQGEQGVKGDGDTFCNICITGIS
 GPPGQPLPGLPGPPGSLGFPQKGEKQAGATGPKGLGIPGAPGAPGFPGSKGEPGDILTFPGMKGDK
 GELGSPGAPGLPGLPGTQDGLPGLPGPKGEPGGITFKGERGPPGNPGLPGLPNIIPMPPGFP
 VGEKGIQGVAGNPQPIGPKGDPQTITQPKPGLPGNPGRDGDVGLPGDPGLPGQPLGPIGSKGE
 PGIPGIGLPGPPGPKGFPPIGPPGAPGTPGRIGLEGGPPGPPGPPGPKGEPGFALPGPPGPPGLPGFKGA
 LGPKGDRGFPGPPGPPGRTGLDGLPGKGDVGNQPPGMPGPPGLPGIVQGGPPGPPGIPGIPGQPLHG
 IPGEKGDGPPGLDVPGGPPGERGSPGIPGAPGPIGPPGSPGLPGKAGASGFPGTGEMGMMGPPGPPG
 GIPGRSGVPLKGDGLQGPGLPGTGEKSKGEPGLPGPPGMPDNLGSKGEKGEPLGPIGVSGP
 KGYQLPGDPGQPLSGQPLPGPPGPKGNPGLPGQPLIGPPGLKGTIGDMGFPGQVEGPPGPPSGVP
 GQPGSPGLPGQKGDGDPGISSIPLPGLPGPKGEPGLPGYPGNPGIKGSVGDPLPGLPGTGPAGKQPL
 PGFPGTGPSPGPKGISGPPGNPGLPGEPPVGGGHPGQPGPPGKPKGQDGIIPGAPQKGEPPGQPGF
 NPGPPGLPGLSGQKGDGGLPGIPGNPGLPGPKGEPGFHGFPGVQGGPPGPPGSPGPALEGPKGNPQGGP
 GRPGLPPEGPPGLPNNGGIKGEKGNPQPLPGLPGLKGDQGGPGLQGNPGRPLNGMKDPLPGVPG
 FPGMKGSPGVPGSAGPEGEPGLIGPPGPPGLPGPSGQSI I I KGDAGPPGIPGQPLKGLPGQPGPLG
 PTGPPGDPGRNGLPGFDGAGGRKGDPLGQPGTRGLDGGPPGDLQGGPPGPGTSSVAHGFLITRHSQT
 TDAPQCPQGLTQVYEGFSLLYVQGNKRAHQDLGTAGSCLRRFSTMPFMFCNINNVCNFAASRNDYSYWLS
 TPEPMPMSMQPLKQSIQPFISRCVCEAPAVVI AVHSQTIQIPHCPQGWDSLWIGYSFMHMTSAGAEGS
 GQALASPGSCLLEFRSAPFIECHGRGTCNYYANSYSFWLATVDVSDMFSKQPSETLKAGDLRTRISRCQV
 CMKRT

TRTRPLE – GFP Tag – V

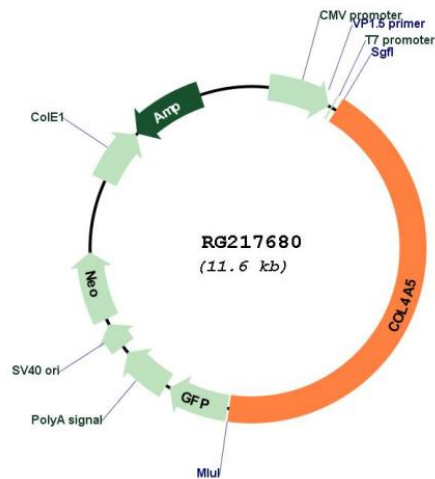
Restriction Sites:

SgfI-MluI

Cloning Scheme:



Plasmid Map:



ACCN: NM_000495

ORF Size: 5055 bp

OTI Disclaimer: The molecular sequence of this clone aligns with the gene accession number as a point of reference only. However, individual transcript sequences of the same gene can differ through naturally occurring variations (e.g. polymorphisms), each with its own valid existence. This clone is substantially in agreement with the reference, but a complete review of all prevailing variants is recommended prior to use. [More info](#)

OTI Annotation: This clone was engineered to express the complete ORF with an expression tag. Expression varies depending on the nature of the gene.

Components:	The ORF clone is ion-exchange column purified and shipped in a 2D barcoded Matrix tube containing 10ug of transfection-ready, dried plasmid DNA (reconstitute with 100 ul of water).
Reconstitution Method:	<ol style="list-style-type: none">1. Centrifuge at 5,000xg for 5min.2. Carefully open the tube and add 100ul of sterile water to dissolve the DNA.3. Close the tube and incubate for 10 minutes at room temperature.4. Briefly vortex the tube and then do a quick spin (less than 5000xg) to concentrate the liquid at the bottom.5. Store the suspended plasmid at -20°C. The DNA is stable for at least one year from date of shipping when stored at -20°C.
RefSeq:	<u>NM_000495.5</u>
RefSeq Size:	6523 bp
RefSeq ORF:	5058 bp
Locus ID:	1287
UniProt ID:	<u>P29400</u>
Cytogenetics:	Xq22.3
Domains:	C4, Collagen
Gene Summary:	This gene encodes one of the six subunits of type IV collagen, the major structural component of basement membranes. Mutations in this gene are associated with X-linked Alport syndrome, also known as hereditary nephritis. Like the other members of the type IV collagen gene family, this gene is organized in a head-to-head conformation with another type IV collagen gene so that each gene pair shares a common promoter. Alternatively spliced transcript variants have been identified for this gene. [provided by RefSeq, Aug 2010]