

Product datasheet for **RG217672**

CCL14 (NM_004166) Human Tagged ORF Clone

Product data:

Product Type: Expression Plasmids
Product Name: CCL14 (NM_004166) Human Tagged ORF Clone
Tag: TurboGFP
Symbol: CCL14
Synonyms: CC-1; CC-3; CKb1; FLJ16015; HCC-1; HCC-3; MCIF; NCC-2; NCC2; SCYA14; SCYL2; SY14
Mammalian Cell Selection: Neomycin
Vector: pCMV6-AC-GFP (PS100010)
E. coli Selection: Ampicillin (100 ug/mL)
ORF Nucleotide Sequence: >RG217672 representing NM_004166
 Red=Cloning site Blue=ORF Green=Tags(s)

TTTTGTAATACGACTCACTATAGGGCGCCGGAATTCGTCGACTGGATCCGGTACCGAGGAGATCTGCC
 GCC**CGATCGCC**

ATGAAGATCTCCGTGGCTGCCATTCCCTTCTTCCTCATCACCATCGCCCTAGGGACCAAGACTGAAT
 CCTCCTCACGGGACCTTACCACCCCTCAGAGTGCTGCTTACCTACCTACAAGATCCCAGTCA
 GCGGATTATGGATTACTATGAGACCAACAGCCAGTGCTCCAAGCCGGAATTGTCTTCATACCAAAAGG
 GGCCATCCGTCTGTACCAACCCAGTACAAGTGGGTCCAGGACTATATCAAGGACATGAAGGAGAAC

ACGCGTACGCGGCCGCTCGAG - GFP Tag - GTTTAA

Protein Sequence: >RG217672 representing NM_004166
 Red=Cloning site Green=Tags(s)

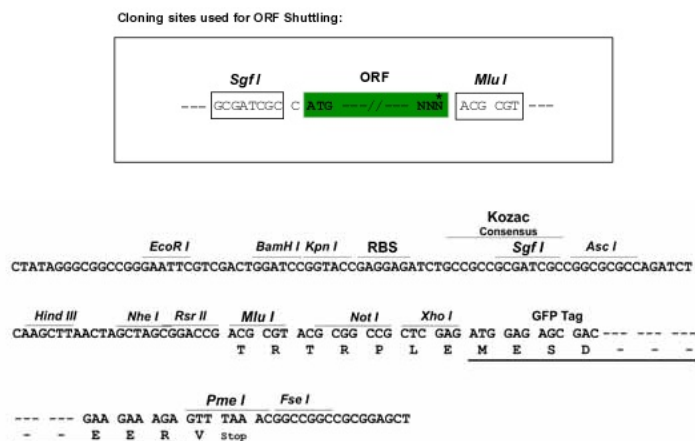
MKISVAaipffllITIALGKTESSRGPYHPSECCFTYTTYKIPRQRIMDYETNSQCSKPGIVFITKR
 GHSVCTNPSDKWVQDYIKDMKEN

TRTRPLE - GFP Tag - V

Restriction Sites: Sgfl-MluI



[View online »](#)

Cloning Scheme:


ACCN: NM_004166

ORF Size: 279 bp

OTI Disclaimer: The molecular sequence of this clone aligns with the gene accession number as a point of reference only. However, individual transcript sequences of the same gene can differ through naturally occurring variations (e.g. polymorphisms), each with its own valid existence. This clone is substantially in agreement with the reference, but a complete review of all prevailing variants is recommended prior to use. [More info](#)

OTI Annotation: This clone was engineered to express the complete ORF with an expression tag. Expression varies depending on the nature of the gene.

Components: The ORF clone is ion-exchange column purified and shipped in a 2D barcoded Matrix tube containing 10ug of transfection-ready, dried plasmid DNA (reconstitute with 100 ul of water).

Reconstitution Method:

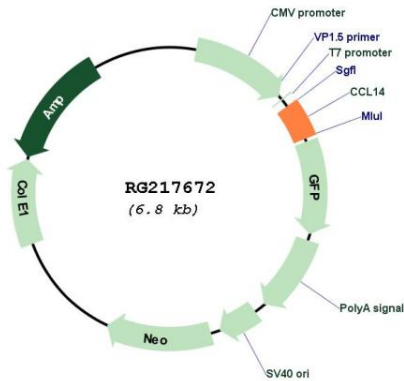
1. Centrifuge at 5,000xg for 5min.
2. Carefully open the tube and add 100ul of sterile water to dissolve the DNA.
3. Close the tube and incubate for 10 minutes at room temperature.
4. Briefly vortex the tube and then do a quick spin (less than 5000xg) to concentrate the liquid at the bottom.
5. Store the suspended plasmid at -20°C. The DNA is stable for at least one year from date of shipping when stored at -20°C.

RefSeq: [NM_004166.4](#)

RefSeq Size: 1344 bp

RefSeq ORF:	281 bp
Locus ID:	6358
Cytogenetics:	17q12
Domains:	IL8
Protein Families:	Druggable Genome, Secreted Protein
Protein Pathways:	Chemokine signaling pathway, Cytokine-cytokine receptor interaction
Gene Summary:	This gene, chemokine (C-C motif) ligand 14, is one of several CC cytokine genes clustered on 17q11.2. The CC cytokines are secreted proteins characterized by two adjacent cysteines. The cytokine encoded by this gene induces changes in intracellular calcium concentration and enzyme release in monocytes. Multiple transcript variants encoding different isoforms have been found for this gene. Read-through transcripts are also expressed that include exons from the upstream cytokine gene, chemokine (C-C motif) ligand 15, and are represented as GeneID: 348249. [provided by RefSeq, Dec 2009]

Product images:



Circular map for RG217672