

Product datasheet for **RG217646**

IRF8 (NM_002163) Human Tagged ORF Clone

Product data:

Product Type:	Expression Plasmids
Product Name:	IRF8 (NM_002163) Human Tagged ORF Clone
Tag:	TurboGFP
Symbol:	IRF8
Synonyms:	H-ICSBP; ICSBP; ICSBP1; IMD32A; IMD32B; IRF-8
Mammalian Cell Selection:	Neomycin
Vector:	pCMV6-AC-GFP (PS100010)
E. coli Selection:	Ampicillin (100 ug/mL)
ORF Nucleotide Sequence:	>RG217646 representing NM_002163 Red=Cloning site Blue=ORF Green=Tags(s)

TTTTGTAATACGACTCACTATAGGGCGGCCGGAATTCGTCGACTGGATCCGGTACCGAGGAGATCTGCC
GCC**CGATCGCC**

ATGTGTGACCGGAATGGTGGTCGGCGGCTTCGACAGTGGCTGATCGAGCAGATTGACAGTAGCATGTATC
CAGGACTGATTTGGGAGAATGAGGAGAAGAGCATGTTCCGGATCCCTTGGAAACACGCTGGCAAGCAAGA
TTATAATCAGGAAGTGGATGCCTCCATTTTAAAGCCTGGCAGTTTTTAAAGGGAAGTTTAAAGAAGGG
GACAAAGCTGAACCAGCCACTTGAAGACGAGGTTACGCTGTGCTTTGAATAAGAGCCCAGATTTTGAGG
AAGTGACGGACCGTCCCAACTGGACATTTCCGAGCCATACAAAGTTTACCGAATTGTTCTGAGGAAGA
GCAAAAATGCAAACTAGGCGTGGCAACTGCTGGCTGCGTGAATGAAGTTACAGAGATGGAGTGCGGTCGC
TCTGAAATCGACGAGCTGATCAAGGAGCCTTCTGTGGACGATTACATGGGGATGATCAAAAAGGAGCCCTT
CCCCCGCGGAGGCTGTCCGAGTCACTCCTTCCAGACTGGTGGGCGCAGCAGCCAGCACAGGCGTGCC
GCTGGTGACGGGTACACCACCTACGACGCGCACCATTAGCATTCTCCAGATGGTGATCAGTTCTAC
TATGGGGCAAGCTGGTGGGCCAGGCCACCACCCTGCCCGAGGGCTGCCGCTGTCCCTGAGCCAGC
CTGGGCTGCCCGCACCAGCTGTATGGGCCGAGGGCTGGAGCTGGTGCCTTCCCGCCGGCCAGCC
CATCCCCAGCGAGCGACAGAGGAGGTGACGCGGAAGCTGTTCCGGCACCTGGAGCGCGGGTGTCTGCTG
CACAGCAGCCGGCAGGGCTGTTCTCAAGCGGCTGTGCCAGGGCCGCTGTTCTGCAGCGCAACGCCG
TGGTGTGCAAAGGCAGGCCCAACAAGCTGGAGCGTGATGAGGTGGTCCAGGCTTTCGACACCAGCCAGTT
CTTCCGAGAGCTGCAGCAGTTCTATAACAGCCAGGGCCGCTTCTGACGGCAGGGTGGTGTGCTT
GGGGAAGAGTTTCCGGATATGGCCCCCTTGCCTCCAACTATTCTCGTGCAGATTGAGCAGCTGTATG
TCCGGCAACTGGCAGAAGAGGCTGGGAAGAGCTGTGGAGCCGGCTCTGTGATGCAGGCCCGGAGGACC
GCCGCCAGACCAGGTCTCCGGATGTTCCAGATATTTGTGCCTCACACCAGAGATCATTTTTTCAGAGAA
AACCAACAGATCACCGTC

ACGCGTACGCGGCCGCTCGAG - GFP Tag - GTTTAA



[View online »](#)

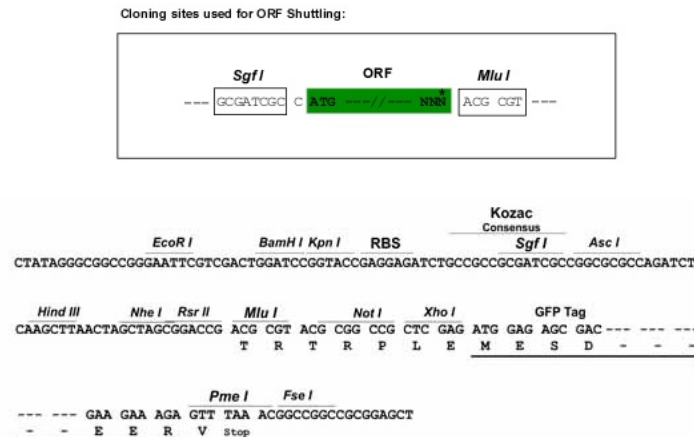
Protein Sequence: >RG217646 representing NM_002163
Red=Cloning site Green=Tags(s)

MCDRNGGRRLRQWLIEQIDSSMYPGLIWENEKSMFRIPWKHAGKQDYNQEVDASIFKAWAVFKGKFKEG
 DKAEPATWKTRLRCALNKSPDFEEVTDRLDISEPYKVYRIVPEEEQKCKLGVATAGCVNEVTEMECGR
 SEIDELIKEPSVDDYMGMIKRSPPEACRSQLLPDWAAQPSTGVPLVTGYTTYDAHHSASFQSMVISFY
 YGGKLVGQATTTCPGECRLSLSQPGLPGTKLYGPEGLELVRFPADAIPSERQRQVTRKLFHGLERGVLL
 HSSRQGVFVKRLCQGRVFCSGNAVCKGRPNKLERDEVVQVFDTSQFFRELQQFYNSQGRLPDGRVVLCF
 GEEFPDMAPLRSKLILVQIEQLYVRQLAEEAGKSCGAGSYMQAPEEPPDQVFRMFPDICASHQRSFFRE
 NQQITV

TRTRPLE - GFP Tag - V

Restriction Sites: SgfI-MluI

Cloning Scheme:



ACCN: NM_002163

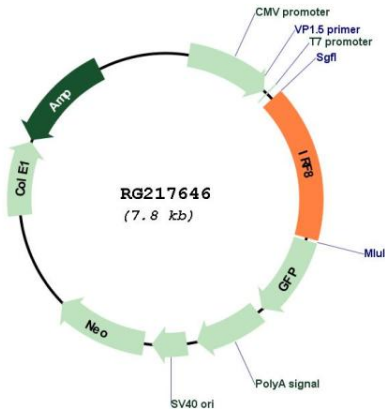
ORF Size: 1278 bp

OTI Disclaimer: Due to the inherent nature of this plasmid, standard methods to replicate additional amounts of DNA in E. coli are highly likely to result in mutations and/or rearrangements. Therefore, OriGene does not guarantee the capability to replicate this plasmid DNA. Additional amounts of DNA can be purchased from OriGene with batch-specific, full-sequence verification at a reduced cost. Please contact our customer care team at custsupport@origene.com or by calling 301.340.3188 option 3 for pricing and delivery.

The molecular sequence of this clone aligns with the gene accession number as a point of reference only. However, individual transcript sequences of the same gene can differ through naturally occurring variations (e.g. polymorphisms), each with its own valid existence. This clone is substantially in agreement with the reference, but a complete review of all prevailing variants is recommended prior to use. [More info](#)

OTI Annotation:	This clone was engineered to express the complete ORF with an expression tag. Expression varies depending on the nature of the gene.
Components:	The ORF clone is ion-exchange column purified and shipped in a 2D barcoded Matrix tube containing 10ug of transfection-ready, dried plasmid DNA (reconstitute with 100 ul of water).
Reconstitution Method:	<ol style="list-style-type: none">1. Centrifuge at 5,000xg for 5min.2. Carefully open the tube and add 100ul of sterile water to dissolve the DNA.3. Close the tube and incubate for 10 minutes at room temperature.4. Briefly vortex the tube and then do a quick spin (less than 5000xg) to concentrate the liquid at the bottom.5. Store the suspended plasmid at -20°C. The DNA is stable for at least one year from date of shipping when stored at -20°C.
RefSeq:	<u>NM_002163.4</u>
RefSeq Size:	2678 bp
RefSeq ORF:	1281 bp
Locus ID:	3394
UniProt ID:	<u>Q02556</u>
Cytogenetics:	16q24.1
Domains:	IRF
Protein Families:	Transcription Factors
Gene Summary:	Interferon consensus sequence-binding protein (ICSBP) is a transcription factor of the interferon (IFN) regulatory factor (IRF) family. Proteins of this family are composed of a conserved DNA-binding domain in the N-terminal region and a divergent C-terminal region that serves as the regulatory domain. The IRF family proteins bind to the IFN-stimulated response element (ISRE) and regulate expression of genes stimulated by type I IFNs, namely IFN-alpha and IFN-beta. IRF family proteins also control expression of IFN-alpha and IFN-beta-regulated genes that are induced by viral infection. [provided by RefSeq, Jul 2008]

Product images:



Circular map for RG217646