

## Product datasheet for **RG217610**

### **KIF21A (NM\_017641) Human Tagged ORF Clone**

#### Product data:

Product Type:	Expression Plasmids
Product Name:	KIF21A (NM_017641) Human Tagged ORF Clone
Tag:	TurboGFP
Symbol:	KIF21A
Synonyms:	CFEOM1; FEOM1; FEOM3A
Mammalian Cell Selection:	Neomycin
Vector:	pCMV6-AC-GFP (PS100010)
E. coli Selection:	Ampicillin (100 ug/mL)
ORF Nucleotide Sequence:	>RG217610 representing NM_017641 Red=Cloning site Blue=ORF Green=Tags(s)

TTTTGTAATACGACTCACTATAGGGCGGCCGGAATTCGTCGACTGGATCCGGTACCGAGGAGATCTGCC  
GCC**CGATCGCC**

ATGTTGGGCGCCCGGACGAGAGCTCCGTGCGGGTGGCTGTCAGAATAAGACCACAGCTTGCCAAAGAGA  
AGATTGAAGGATGCCATATTTGTACATCTGTACACCAGGAGAGCCTCAGGTCTTCTAGGGAAAGATAA  
GGCTTTTACTTTGACTATGATTTGACATTGACTCCCAGCAAGAGCAGATCTACATTCAATGTATAGAA  
AACTAATTGAAGTTGCTTTGAAGGATACAATGCTACAGTTTTTGTCTTATGGACAACTGGAGCTGGTA  
AAACATACACAATGGGAACAGGATTTGATGTTAACATTGTTGAGGAAGAACTGGGTATTATTTCTCGAGC  
TGTTAAACACCTTTTAAAGTATTGAAGAAAAAACACATAGCAATTAATAATGGGCTTCTGCTCCA  
GATTTTAAAGTGAATGCCAATCTTAGAGCTCTATAATGAAGAGGTCCTTGACTTATTTGATACCACTC  
GTGATATTGATGCAAAAAGTAAAAATCAAATATAAGAATTCATGAAGATTCAACTGGAGGAATTTATAC  
TGTGGGCGTTACAACACGTAAGTGTGAATACAGAATCAGAGATGATGCAGTGTGAAAGTTGGGTGCTTTA  
TCCCGGACAACAGTACCAGATGAATGTTTACAGAGCTCTCGTTCACATGCCATTTTACCATTGATG  
TGTGTCAAACAGAGTGTGTCCTCAATAGATGCTGACAATGCAACTGATAATAAAATTTTCTGAATC  
AGCACAGATGAATGAATTTGAAACCTGACTGCAAAAGTTCCATTTTGTGATCTCGCAGGATCTGAAAGA  
CTGAAGCGTACTGGAGCTACAGGCGAGAGGGCAAAGAAGGCATTTCTATCAACTGTGGACTTTTGGCAC  
TTGGCAATGTAATAAGTGCCTTGGGAGACAAGAGCAAGAGGGCCACACATGTCCCCTATAGAGATTCCAA  
GCTAACAAAGACTACTACAGGATTCCTCGGGGTAATAGCCAAACAATCATGATAGCATGTGTCAGCCCT  
TCAGACAGAGACTTTATGGAAACGTTAAACACCCTGAAATACGCCAATCGAGCTAGAAAATCAAGAATA  
AGGTGATGGTCAATCAGGACAGAGCTAGTCAGCAATCAATGCACTTCGTAGTGAATCACACGACTTCA  
GATGGAGCTCATGGAGTACAAAACAGGTAAGAATAATTGACGAAGAGGGTGTGGAAAGCATCAATGAC  
ATGTTTCATGAGAATGCTATGCTACAGACTGAAAATAATAACCTGCGTGAAGAATTAAGCCATGCAAG  
AGACGGTTGATGCATTGAGGTCCAGAATTACACAGCTTGTAGTGATCAGGCCAACCATGTTCTTGCCAG  
AGCAGGTGAAGGAAATGAGGAGATTAGTAATATGATTCATAGTTATATAAAGAAATCGAAGATCTCAGG



[View online »](#)

GCAAAATTATTAGAAAGTGAAGCAGTGAATGAGAACCTTCGAAAAAATTGACAAGGCCACAGCAAGAG  
CGCCATATTTTCAGCGGATCATCACTTTTTCTCTACCATACTATCCTCAGACAAAGAAACCATTGAAAT  
TATAGACCTAGCAAAAAAGATTTAGAGAAGTTGAAAAGAAAAGAAAAGAGGAAGAAAAAGTGTGGCT  
GGTAAAGAGGATAATACAGACACTGACCAAGAGAAGAAAAGAAAAGGGTGTTCGAAAGAGAAAAACA  
ATGAATTAGAAGTGAAGAAAAGTCAAGAAGTGAAGTATGAGGATGAAGAAGAGGAGGAGGAGGAGGA  
GGAAGATGACATTGATGGGGTAAAAGTCTGATGAATCAGATTCTGAATCAGATGAAAAAGCCAATTAT  
CAAGCAGACTTGGCAAACATTACTTGTGAAATTGCAATTAAGCAAAGCTGATTGATGAACTAGAAAAACA  
GCCAGAAAAGACTGCAGACTCTGAAAAAGCAGTATGAAGAGAAGCTAATGATGCTCAACATAAAAATTCG  
GGATACTCAGCTTGAAGAGACCAGGTGCTTCAAACCTTAGGCTCGGTAGAATCTTACTCAGAAGAAAA  
GCAAAAAAGTTAGTCTGAATATGAAAAGAACTCCAAGCCATGAACAAAGAACTGCAGAGACTTCAAG  
CAGCTCAAAAAGAACATGCAAGGTTGCTTAAAAATCAGTCTCAGTATGAAAAGCAATTGAAGAAATTGCA  
GCAGGATGTGATGAAAATGAAAAAACAAAGGTTGCTTAAATGAAACAAATGAAAGAAGAACAAGAGAAA  
GCCAGACTGACTGAGTCTAGAAGAACAGAGAGATTGCTCAGTTGAAAAGGATCAACGTAAAAGAGATC  
ATCAACTTAGACTTCTGGAAGCCAAAAAAGAAACCAAGAAGTGGTTCTACGTGCAAAAAGTGAAGAGT  
TACGGCTCTTCGTGCGCAAGTAAAGCCCATGTCAGATAAAGTGGCTGGGAAAGTTACTCGGAAGCTGAGT  
TCATCTGATGCACCTGCTCAGGACACAGGTTCCAGTGCAGCTGCTGTCGAAACAGATGCATCAAGGACAG  
GAGCCCAGCAGAAAAATGAGAATTCCTGTGGCGAGAGTCCAGGCCTTACCAACGCCGGCAACAAATGGAAA  
CAGGAAAAAATATCAGAGGAAAGGATTGACTGGCCGAGTGTATTTTCCAAGACAGCTCGCATGAAGTGG  
CAGCTCCTTGAGCGCAGGGTACAGACATCATATGCAGAAGATGACCATTTCCAACATGGAGGCAGATA  
TGAATAGACTCCTCAAGCAACGGGAGGAACTCACAAAAAGACGAGAGAACTTTCAAAAAGAAAGGGAGAA  
GATAGTCAAGGAGAATGGAGAGGGAGATAAAAAATGTGGCTAATATCAATGAAGAGATGGAGTCACTGACT  
GCTAATATCGATTACATCAATGACAGTATTTCTGATTGTCAGGCCAACATAATGCAGATGGAAGAAGCAA  
AGGAAGAAGGTGAGACATTGGATGTTACTGCAGTCAATTAATGCTGCACCCTTACAGAAGCCCATACCT  
GCTAGATCACTTCTGTCAATGGGCATCAATAAGGGTCTTCAGGCTGCCAGAAAAGGAGGCTCAAAATTA  
GTACTGGAAGGTCGACTCAAACAAACAGAAATAACCAGTGTACCCAAAACAGCTCTTATTCCATATGT  
TGAAAGAGAAGGCAGAATTAATCCTGAGCTAGATGCTTTACTAGGCCATGCTTTACAAGATCTAGATAG  
CGTACCATTAGAAAAATGTAGAGGATAGTACTGATGAGGATGCTCCTTTAAACAGCCAGGATCAGAAGGA  
AGCAGCGTGTCTCAGATCTCATGAAGCTTTGTGGTGAAGTGAACCTAAGAACAAGGCCGGAAGGAGAA  
CCACCCTCAGATGGAATTGCTGTATGCAGATAGCAGTGAAGTACTTCCAGACACTAGTACAGGAGATGC  
CTCCTTGGCTGGCCCTCTCACACCTGTTGCAGAAGGGCAAGAGATTGGAATGAATACAGAGACAAGTGGT  
ACTTCTGTAGGAAAAAGAGCTCTCTCCCCACCTGGCTTACCTTCTAAGATAGGCAGCATTTCAGGC  
AGTCATCTCTATCAGAAAAAAAATTCAGAGCCTTCTCCTGTAACAAGGAGAAAAGGCATATGAGAAAGC  
AGAAAAATCAAAGGCCAAGGAACAAAAGCACTCAGATTCTGGAATTCAGAGGCTAGTCTTTCACCTCCT  
TCTTCCCACCAAGCCGGCCCGTAATGAACTGAATGTTTTAATCGTCTTACTGTTTCTCAGGGAAACA  
CATCAGTTCAGCAGGATAAGTCTGATGAAAGTGAAGTCTCCTCTCTCGGAGGTACACAGATCCTCCAGAAG  
GGGCATAATCAACCCATTTCTGCTTCAAAGGAATCAGAGCTTTTCCACTTCAGTGTATTCACATAGCT  
GAAGGGCATAAAAAGCTGTGCTCTGTGTGGATTCTACTGATGATCTCCTCTTCACTGGATCAAAAGATC  
GTGTCTGTAATAACTGTAATTAACCAAGTTTGGTCTTCACTGTATCAACATCTTATTAAGGTGTGG  
GATATCAGAGATTACGCAAAAGTGCATTCGAACACTAACGTCTTCAGGTCAAGTACTCTGGAGATGCTT  
GTTCTGCAAGTACCAGTGAACAGTAGCTATTCCTTCTGGAGAGAACCAGATCAATCAAATTGCCCTAAA  
CCCAACTGGCACCTTCTCTATGCTGCTTCTGAAATGCTGTGAGGATGTGGATCTTAAAAGGTTTCAG  
TCTACAGGAAAGTTAACAGGACACCTAGGCCCTGTTATGTGCCTTACTGTGGATCAGATTTCCAGTGGAC  
AAGATCTAATCATCACTGGCTCCAAGGATCATTACATCAAAATGTTTGATGTTACAGAAGGAGCTTTGG  
GACTGTGAGTCCCACCCACAATTTGAACCCCTCATTATGATGGCATAGAAGCACTAACCATTCAGGG  
GATAACCTATTTAGTGGTCTAGAGATAATGGAATCAAGAAATGGGACTTAACTCAAAAAGACCTTCTTC  
AGCAAGTTCAAAATGCACATAAGGATGGGTCTGTGCCCTGGGAGTGGTCCAGACCACCCAGTTTGTCT  
CAGTGGCTGCAGAGGGGGCATTGAAAAGTCTGGAACATGGATACTTTTATGCCAGTGGGAGAGATGAAG  
GGTCATGATAGTCTATCAATGCCATATGTGTTAATCCACCCACATTTTACTGCAGCTGATGATCGAA  
CTGTGAGAATTTGGAAGGCTCGCAATTTGCAAGATGGTCAGATCTCTGACACAGGAGATCTGGGGGAAGA  
TATTGCCAGTAAT

ACGCGTACGCGGCCGCTCGAG – GFP Tag – GTTTAA

Protein Sequence:

>RG217610 representing NM\_017641  
 Red=Cloning site Green=Tags(s)

MLGAPDESSVRVAVRIRPQLAKEKIEGCHICTSVTPGEPQVFLGKDKAFTFDYVFDIDSQQEQIYIQICIE  
 KLIEGCFEGYNATVFAYGQTGAGKTYTMTGTFDNIIVEEELGII SRAVKHLFKSIEEKKHIAIKNGLPAP  
 DFKVNAQFLELYNEEVLDFDTRDIDAKSKSNIRIHEDSTGGIYTVGVTRTVNTESEMMQCLKL GAL  
 SRTTASTQMNQSSRSHAI FTIHCQTRVCPQIDADNATDNKII SESAQMNEFETLTAKFHFVLAGSER  
 LKRTGATGERAKEGISINCGLLALGNVISALGDKSKRATHVPYRDSKLRLLQDSLGGNSQTIMIACVSP  
 SDRDFMETLNTLKYANRARNIKNKVMVNQDRASQQINALRSEITRLQMELEMYKTGKRIIDEEGVESIND  
 MFHENAMLQTENNLRVRIKAMQETVDALRSRITQLVSDQANHV LARAGEGNEEISNMIHSYIKEIEDLR  
 AKLLESEAVNENLRKNL TRATARAPYFSGSSTFSPTILSSDKETIEIIDLAKKDLEKLRKREKRKKSVA  
 GKEDNTD TDQEKKEEKGVSERENNELEVEESQEVSDHEDEEEEEEEEDDIDGGESSDESDEKANY  
 QADLANITCEIAIKQL IDELENSQKRLQTLKKQYEEKLMLLQHKIRDTQLERDQV LQNLGVSYESYEEK  
 AKKVRSEYEKQLQAMNKLQRLQAAQKEHARLLKNQSQYEKQLKQLQDDV MEMKTKVRLMKQMKEEQEK  
 ARLTESRRNREIAQLKKDQRKRDHQLRLLLEAQKRNQEVVLRKTEEVTALRRQVRPMSDKVAGKVRKLS  
 SSDAPAQDTGSSAAAVETDASRTGAQQMRIPVARVQALPTPATNGNRKKYQRKGLTGRVFI SKTARMKW  
 QLLERRVTDIIMQKMTISNMEADMNRLKQREELTKRREKLSKRREKIVKENGEGDKNVANINEEMESLT  
 ANIDYINDSISDCQANIMQMEEAKEEGE TLDVTAVINACTL TEARYLLDHFLSMGINKGLQAAQKEAQIK  
 VLEGR LKQTEITSATQNQLL FHLMLKEAELNPELDALLGHALQDLDSVPLENVEDSTDEDAPLNSPGSEG  
 STLSSDLMKLCGEV KPKNKARRRTTTQMELLYADSS ELASDTSTGDASLPGPLTPVAEGQEIGMNTETSG  
 TSAREKELSPPPGLPSKIGSISRQSSLSEKKIPEPSPVTRRKAYEKA EKSKAKEQKHSDSGTSEASLSP  
 SPSPSRPNELNVFNRLTVSQGNTSVQQDKSDES DSSLSEVHRSSRRGIINPFPASKGIRAFPLQCIHIA  
 EGHTKAVLCVDSTDDLLFTGSKDRTCKVWNLVTGQEI MSLGGHPNNVSVKYCNYSLVFTVSTSYIKVW  
 DIRDSAKCIRTLTSSGQVTLGDACSASTSRTVAIPSGENQINQI ALNPTGTFLYAASGNVARMWDLKRFQ  
 STGKLTGHLGPMVCLTVDQISSGQDLIITGSKDHYIKMFDVTEGALGTVSPTHNFEPHYDGI EALTIQG  
 DNLFSGSRDNGIKKWDLTQKDLLQVVPNAHKDWVCALGVVPDHPVLLSGCRGGILKVVNMMDTFMPV GEMK  
 GHDSPINAICVNSTHIFTAADDRTVRIWKARNLQDGGI SDTGDLGEDIASN

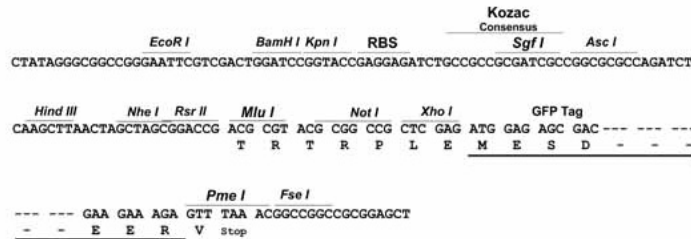
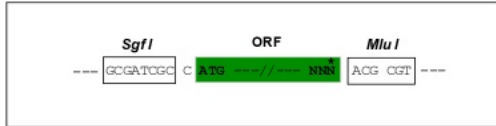
TRTRPLE – GFP Tag – V

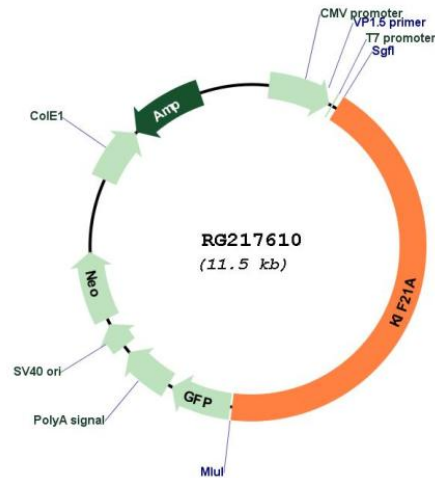
Restriction Sites:

Sgfl-MluI

Cloning Scheme:

Cloning sites used for ORF Shutting:



**Plasmid Map:**


**ACCN:** NM\_017641

**ORF Size:** 4983 bp

**OTI Disclaimer:** The molecular sequence of this clone aligns with the gene accession number as a point of reference only. However, individual transcript sequences of the same gene can differ through naturally occurring variations (e.g. polymorphisms), each with its own valid existence. This clone is substantially in agreement with the reference, but a complete review of all prevailing variants is recommended prior to use. [More info](#)

**OTI Annotation:** This clone was engineered to express the complete ORF with an expression tag. Expression varies depending on the nature of the gene.

**Components:** The ORF clone is ion-exchange column purified and shipped in a 2D barcoded Matrix tube containing 10ug of transfection-ready, dried plasmid DNA (reconstitute with 100 ul of water).

**Reconstitution Method:**

1. Centrifuge at 5,000xg for 5min.
2. Carefully open the tube and add 100ul of sterile water to dissolve the DNA.
3. Close the tube and incubate for 10 minutes at room temperature.
4. Briefly vortex the tube and then do a quick spin (less than 5000xg) to concentrate the liquid at the bottom.
5. Store the suspended plasmid at -20°C. The DNA is stable for at least one year from date of shipping when stored at -20°C.

**RefSeq:** [NM\\_017641.4](#)

**RefSeq Size:** 6335 bp

**RefSeq ORF:** 4986 bp

**Locus ID:** 55605

UniProt ID: [Q7Z4S6](#)

Cytogenetics: 12q12

Protein Families: Druggable Genome

**Gene Summary:** This gene encodes a member of the KIF4 subfamily of kinesin-like motor proteins. The encoded protein is characterized by an N-terminal motor domain a coiled-coil stalk domain and a C-terminal WD-40 repeat domain. This protein may be involved in microtubule dependent transport. Mutations in this gene are the cause of congenital fibrosis of extraocular muscles-1. Alternate splicing results in multiple transcript variants.[provided by RefSeq, Mar 2010]