

## Product datasheet for **RG217584**

### **SYTL2 (NM\_032943) Human Tagged ORF Clone**

#### **Product data:**

Product Type:	Expression Plasmids
Product Name:	SYTL2 (NM_032943) Human Tagged ORF Clone
Tag:	TurboGFP
Symbol:	SYTL2
Synonyms:	CHR11SYT; EXO4; PPP1R151; SGA72M; SLP2; SLP2A
Mammalian Cell Selection:	Neomycin
Vector:	pCMV6-AC-GFP (PS100010)
E. coli Selection:	Ampicillin (100 ug/mL)



[View online »](#)

ORF Nucleotide  
Sequence:

>RG217584 representing NM\_032943  
Red=Cloning site Blue=ORF Green=Tags(s)

TTTTGTAATACGACTCACTATAGGGCGGCCGGAATTCGTCGACTGGATCCGGTACCGAGGAGATCTGCC  
GCCCGCATCGCC

ATGATTGACTTAAGCTTCTGACTGAAGAGGAACAAGAGGCCATCATGAAGTTTTGACGCGGGATGCTG  
CTCTGAAGAGGGCGAAGAAGAGAGAGTACACATTTGCCTGAAAAAATTAAGGATGACCAGCAGCTGAA  
GAATATGAGTGGCCAATGGTTTTATGAAGCCAAGGCAAAAAGGCACAGGGACAAAATCCATGGCGCAGAT  
ATCATCAGAGCATCTATGAGAAAAGAGGGCCCCAGATAGCAGCTGAGCAGAGTAAAGACAGAGAAAATG  
GGGCAAAGGAAAGCTGGGTGAATAATGTCAACAAAGATGCTTTCCTTCTCCAGAGCTGGCTGGCGTTGT  
AGAAGAGCCAGAAGAAGATGCAGCACCAGCAAGCCGAGTTCAGTGTGGTAAATCCAGCTTCCAGTGTG  
ATTGATATGTCCAGGAAAACACAAGGAAACCAATGTGTCTCCAGAGAAGAGGAAGAATCCGTTTAATA  
GCTCCAAGTTGCCAGAAGTCACTCATCAACAACTAAAAATGAACAGTCAAAAAATGGAAGAAGCTGG  
TTTATTTGAGACTTCAAAAGAGGATGAATTGTGAGAGTCAAAAGAAAAGTCAACTGTCGAGATACTTCA  
ATCCAAAAGTTAGAGAAAACAAAGCAGACTTTGCCAGGCCTTTCAAATGGGTCCCAAATCAAGGCTCCAA  
TCCCCAAAGCCAGGAAGATGATCTACAAATCAACTGATTTAAACAAAGATGATAACCAAGTCTTTTCTAG  
ACAAAGGACAGACTCCCTGAAAGCGAGAGGGGCTCCGAGAGGGATCCTCAAGCGCAACTCCAGTTCAGT  
AGCACAGACTCAGAAACCTTCGTTATAATCACAACCTTTGAACCCAAAAGCAAAATTTGTGTACCTGGCC  
TAACCATCCATGAGAGAAATTTCTGAGAAGGAGCATTCTTTAGAAGACAACCTTCCCCAACTCCCTGGA  
GCCATTAAGCATGTGAGATTCTCTGCAGTGAAGGATGAGCTTCCACAGAGTCTGGGCTAATCCATGGT  
CGGGAAGTAGGAGAAATTTAGTGTGTTAGAATCTGACAGATTGAAAAATGGAATGGAAGATCAAGGGACA  
CAGAAGAGTTTCAGAGTGACCCTAAGCCTTCTCAATACAGAAAGCCTTCGCTTTTTTCATCAATCAACCTC  
AAGCCCATATGTATCAAAAAGTGAACACATCAGCCAATGACTTCTGGTCTTTTCCAATTAATGGGCTG  
CATTCTCATTGAGAAGTTTTAAGTGAAGACCACAGTCTATGGAGAATCACCAACCATCAATGAACCCA  
AAGATAAATCATCAGAATTAACAAGGCTTGAATCTGTATTACCCAGAAGCCCTGCTGATGAACTGTCTCA  
TTGTGTTGAGCCTGAGCCATCTCAGGTGCCAGGTGGCAGTTCTAGAGACCGTCAGCAAGGTTCAGAAGAA  
GAACCCAGTCTGTTTTGAAAACCTTGGAAAGGAGTGCCGCTAGGAAAATGCCTTCCAAAAGTCTAGAAG  
ACATTTTCATCAGATTCATCAATCAAGCAAAAGTAGATAATCAGCCAGAAGAATTAGTGCATGAGTGTGA  
AGATGATGAGAAACCAGATCAGAAGCCAGTTACAATGAATGCGTACCAAGAATTTCCACAGTGCCTACA  
CAACCTGATAATCCATTTCTCACCTGACAACTCAAAAGGATGAGCAAGTCTGTTCCAGCATTCTCC  
AAGATGAGGTGAGTGGCAGTGTGATGAGTGTATAGTGGAGACTTTGGCAATCTGGAAGTTAAAGGAAA  
TATTCAGTTTGAATTAATATGTGGAGTCACTGAAGGAGTTGCATGTTTTTGTGGCCAGTGTAAGGAC  
TTAGCAGCAGCGGATGTAAAAAACAGCGTTTCCAGCCATATGTAAGGCCTATTTGCTACCAGACAAAAG  
GCAAAATGGGCAAGAAGAAAACACTCGTAGTGAAGAAAACCTTGAATCCTGTGTATAACGAAATACTGCG  
GTATAAAATGAAAAACAACTTAAAGACACAGAAATGAACCTGTCCATTTGGCATCGGGATACATTT  
AAGCGCAATAGTTTCTAGGGGAGGTGGAACCTGATTTGGAAACATGGGACTGGGATAACAACAGAAATA  
AACAAATGAGATGGTACCCTCTGAAGCGGAAGACAGCACCAGTTGCCCTGAAGCAGAAAACAGAGGTGA  
AATGAAACTAGCTCTCCAGTATGTCCCAGAGCCAGTCCCTGGTAAAAAGCTTCTACAACCTGGAGAAGTG  
CACATCTGGGTGAAGGAATGCCTTGATCTACCACTGCTAAGGGGAAGTCATCAAATCTTTTGTAAAT  
GTACCATCCTTCCAGATACAAGTAGGAAAAGTCCGCAAGACAAGAGCTGTAGGAAAACCAACCC  
TATCTTCAACCACACTATGGTGTATGATGGGTTGAGCCTGAAGATCTGATGGAAGCCTGTGTAGAGCTT  
ACTGTCTGGGACCATTACAAATTAACCAACCAATTTTGGGAGGTCTTCGATTGGCTTTGGAACAGGTA  
AAAGTTATGGGACTGAAGTGGACTGGATGGACTCTACTTCAGAGGAAGTTGCTCTCTGGGAGAAGATGGT  
AAACTCCCCAATACTTGGATTGAAGCAACACTGCCTCTCAGAATGCTTTTGATTGCCAAGATTTCCAAA

ACGCGTACGCGGCCGCTCGAG - GFP Tag - GTTTAA

**Protein Sequence:** >RG217584 representing NM\_032943  
 Red=Cloning site Green=Tags(s)

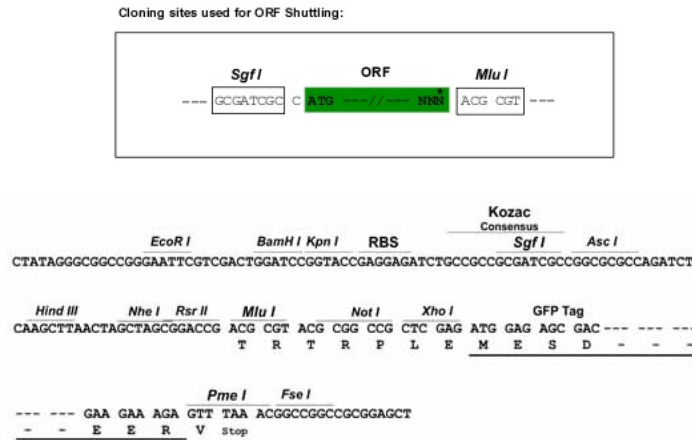
MIDL SFL TEEEQEAIMKVLQRDAALKRAEEERVHRLPEKIKDDQQLKNMSGQWFYEAKAKRHRDKIHGAD  
 IIRASMRKKRPQIAAEQSKDRENGAKESWVNNVKNKDAFLPPELAGVVEEPEEDAAPASSSSVVNPASSV  
 IDMSQENTRKPNVSPEKRKNPFNSKLEPEGHSSQQTKEQSKNGRTGLFQTSKEDELSSESKEKSTVADTS  
 IQKLEKSKQTL PGLSNGSQIKAPIPKARKMIYKSTDLNKDDNQSFPRQRTDSLKARGAPRGILKRNSSSS  
 STDSETLRYNHNFPKSIIVSPGLTIHERISEKEHSLEDNSSPNSLEPLKHVRFSAVKDELQPSPGLIHG  
 REVGFEVSLESDRLKNGMEDAGDTEEFQSDPKPSQYRKPSLFHQSTSSPYVSKSETHQPMSTSGSFPINGL  
 HSHSEVL TARPQSMENSPTINEPKDKSSELTRLESVLPRSPADEL SHCVEPEPSQVPGGSSRDRQQGSEE  
 EPSPVLKTLERSAARKMPSKSLIEDISSDSSNQAKVDNQPEELVRS AEDDEKPDQKPV TNECVPRISTVPT  
 QPDNPF SHPKLKRMSKSVPAFLQDEVSGSVMSVYSGDFGNLEVKGNIQFAIEYVESL KELHVFVAQCKD  
 LAAADVKKQRSDPYVKAYLLPDKGKMGKKKTLVVKKTLNVPVYNEILRYKIEKQILKTQKLNLSIWHRDTF  
 KRNSFLGVEVLDLETWWDNKQNKQLRWYPLKRKTAPVALEAENR GEMKLALQYVPEVP GKKLPTTGEV  
 HIWVKECLDPLLRGSHLNSFVKCTILPDTSRKSRQKTRAVGKTTNPIFNHTMVYDGF RPEDLMEACVEL  
 TVWDHYKLTNQFLGGLRIGFGTGKSYGTEVDWMDSTSEEVALWEKMNVPNTWIEATLPLRMLLI AKISK

TRTRPLE - GFP Tag - V

**Restriction Sites:**

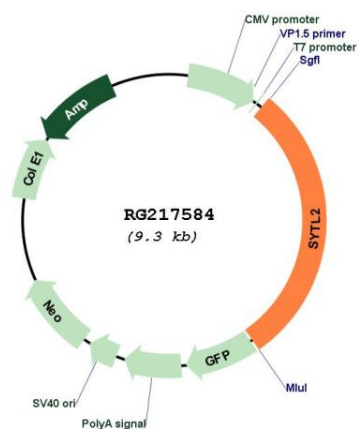
SgfI-MluI

**Cloning Scheme:**



<b>ACCN:</b>	NM_032943
<b>ORF Size:</b>	2730 bp
<b>OTI Disclaimer:</b>	The molecular sequence of this clone aligns with the gene accession number as a point of reference only. However, individual transcript sequences of the same gene can differ through naturally occurring variations (e.g. polymorphisms), each with its own valid existence. This clone is substantially in agreement with the reference, but a complete review of all prevailing variants is recommended prior to use. <a href="#">More info</a>
<b>OTI Annotation:</b>	This clone was engineered to express the complete ORF with an expression tag. Expression varies depending on the nature of the gene.
<b>Components:</b>	The ORF clone is ion-exchange column purified and shipped in a 2D barcoded Matrix tube containing 10ug of transfection-ready, dried plasmid DNA (reconstitute with 100 ul of water).
<b>Reconstitution Method:</b>	<ol style="list-style-type: none"><li>1. Centrifuge at 5,000xg for 5min.</li><li>2. Carefully open the tube and add 100ul of sterile water to dissolve the DNA.</li><li>3. Close the tube and incubate for 10 minutes at room temperature.</li><li>4. Briefly vortex the tube and then do a quick spin (less than 5000xg) to concentrate the liquid at the bottom.</li><li>5. Store the suspended plasmid at -20°C. The DNA is stable for at least one year from date of shipping when stored at -20°C.</li></ol>
<b>RefSeq:</b>	<a href="#">NM_032943.4</a>
<b>RefSeq Size:</b>	3985 bp
<b>RefSeq ORF:</b>	2733 bp
<b>Locus ID:</b>	54843
<b>UniProt ID:</b>	<a href="#">Q9HCH5</a>
<b>Cytogenetics:</b>	11q14.1
<b>Domains:</b>	C2
<b>Gene Summary:</b>	The protein encoded by this gene is a synaptotagmin-like protein (SLP) that belongs to a C2 domain-containing protein family. The SLP homology domain (SHD) of this protein has been shown to specifically bind the GTP-bound form of Ras-related protein Rab-27A (RAB27A). This protein plays a role in RAB27A-dependent vesicle trafficking and controls melanosome distribution in the cell periphery. Alternative splicing results in multiple transcript variants encoding distinct isoforms.[provided by RefSeq, Jun 2009]

Product images:



Circular map for RG217584