

Product datasheet for **RG217564**

ARAP1 (NM_015242) Human Tagged ORF Clone

Product data:

| | |
|---------------------------|---|
| Product Type: | Expression Plasmids |
| Product Name: | ARAP1 (NM_015242) Human Tagged ORF Clone |
| Tag: | TurboGFP |
| Symbol: | ARAP1 |
| Synonyms: | CENTD2 |
| Mammalian Cell Selection: | Neomycin |
| Vector: | pCMV6-AC-GFP (PS100010) |
| E. coli Selection: | Ampicillin (100 ug/mL) |
| ORF Nucleotide Sequence: | >RG217564 representing NM_015242 Red=Cloning site Blue=ORF Green=Tags(s) |

TTTTGTAATACGACTCACTATAGGGCGGCCGGAATTCGTCGACTGGATCCGGTACCGAGGAGATCTGCC
GCC**CGATCGCC**

ATGACCAAGAAGGAGGAGCCCCACCGAGCCGAGTCCCACGGGCCGTGCGCGTGGCCAGTCTGCTGAGCG
AGGGAGAGGAAGTGTCTGGGGACGACCAAGGGATGAGGAAGAGGATGACCACGCCTATGAGGGCGTCCC
CAATGGCGGATGGCATAACCAGCAGCCTGAGCTTGTCTTCCCCAGCACAATAGCTGCGCCACACCCCATG
GACGGGCCGCTGGGGCTCCACCCCGTCACACCAGTCATCAAGGCTGGCTGGTGGACAAGAACCAC
CGCAGGGATCTTACATCTATCAGAAACGATGGGTGAGACTGGATACTGATCACCTGCGATACTTTGACAG
TAAACAAGGACGCTTACTCTAAGCGCTTTATCTCTGTGGCCTGCATCTCCACGTGGCTGCCATCGGGGAC
CAGAAGTTTGAAGTGATCACAACAACCGAACCTTTGCCTTCCGGGCAGAGAGTGATGTGGAGCGGAAGG
AGTGGATGCAGGCCCTGCAGCAGGCCATGGCTGAGCAGCGTGCCCGGGCCCGGCTCTCTAGCGCTTATCT
GCTGGGAGTTCAGGCTCAGAGCAGCCTGACCCGCTGGCAGCCTGGAGCTTCGTGGCTTCAAGAATAAG
CTGTACGTGGCCGTGGTGGGGACAAAGTGCAGCTCTACAAGAATCTAGAGGAGTACCACCTGGGCATTG
GCATCACCTTCATCGACATGAGCGTGGGCAACGTGAAGGAAGTGGACCGGCGCAGCTTCGACCTCACCAC
GCCCTACCGCATCTTCAGCTTCTCTGCTGACTCAGAGCTAGAGAAGGAGCAGTGGTTGGAGGCCATGCAG
GGAGCCATCGCTGAGGCCCTGTACTCGGAGGTGGCCGAGCGCATCTGGGCTGCAGCCCCAACAGGT
TCTGTGCTGACTGCGGGGCTCCTCAGCCTGACTGGCCTCCATCAACCTCTGTGTTGTTATCTGCAAGCG
CTGTGCAGGGGAGCACCGTGGCCTGGGCGCTGGCGTCTCCAAGGTGCGGAGCCTGAAGATGGACAGGAAG
GTGTGGACAGAAACACTTATCGAGCTCTTCTTACAGCTGGGAATGGCGCTGGGAACCGCTTCTGGGCGAG
CCAACGTGCCCCCAGTGGGCCCTGCAGCCCAGCAGCAGCCCCAGCACCCGGCGGTGCCACCTGGAGGC
CAAGTACCGTGGGGCAAGTACCGCCGCTACCACCCGCTCTTTGGCAACCAGGAGGAGCTGGACAAGGCC
CTGTGTGCTGCAGTCACCACCACAGACCTGGCTGAGACCCAGGCGCTCCTGGGCTGTGGGGCTGGGATCA
ACTGCTTCTCGGGGACCCTGAGGCCCCACGCCCTGGCTCTTGACAGAGCAGCGGGGCGAGCAGCTGCA
GATGGAATTCCTCGGAACAACCGACCACAGAGGTGCCTCGGCTGGACTCGATGAAGCCCTGGAAAAG



[View online »](#)

CACTACTCAGTTGTCTCTGCCGACCGTGAGCCACAGTGGCTTCTCTACAAGACTGCCTCTGCCGGAAGC
TGCTACAGGACCGCCGGGCCCGGAAGAGTTTCAGCCGGCGCTGGTGTGTCTTGGTGACGGGGTCTGAG
CTACTTTGAGAATGAGCGGGCAGTGACCCCAATGGAGAGATTCGGGCCAGCGAGATTGTGTGCCTGGCA
GTGCCCTCTGACACCCATGGCTTTGAGCACACCTTTGAGGTGTACACGGAGGGAGAACGGCTGTACC
TGTTTGGGCTGGAGAGTGGGAGCAGGCTCATGAGTGGGTCAAGTGTATTGCTAAGGCATTCTGCCTCC
CCTAGCCGAGGATCTGCTGGCCCGGATTTTGGCGGCTGGGACGCTACCCTACAAAGCTGGCCTGAGC
CTACAGCGGGCCAGGAGGGCTGGTCTCTCTCAGTGGCTCGGAGCTCCGTGCTTCCCGGAGGGG
CCTGCGAAGAGCCGCTGCAACTACGAAACTGCAGGAGCTTCCATCCAGGGGGACAGTGAGAACCAGGT
GCTGGTGTGGTGGAGCGAAGGAGGACACTGTACATACAGGGCGAGCGGGCTGGACTTCATGGTTGG
CTGGGGCCATCCAGAAAGCAGCCGCCAGCATGGGGACACGCTGTGGAGCAGCAGCTTGGGGACTCGG
ATATCCCGGTGATCGTGTACCGTGTGTGGACTACATCACGCAGTGGCGCTGACCTCCGAGGGCATCTA
CCGCAAGTGTGGCAGACATCGAAGACACAGCGGCTGCTGGAGAGCTGCGGCAGGATGCGCGCTCTGTG
CACCTCAAGGAGGGCAGCAGCAGTGGATGATGTTTCTCGGCGCTCAAGCGCTTCTGCGCGACCTGC
CTGATGGGCTCTTCACTCGGCCACGCGCTAACCTGGCTGGAGGCTCAGAGATTGAGGACGAGGAGGA
GAAGTCTCCAGTACCAGAGCTGCTGGTGGCGCTGCCCTGTCAACGGGCCACAGTGAAGGCCCTT
ATCAGCCACCTGTACTGTGTTTCACTGCTTCTCAGACACGAACCAGATGAACGTGACAACCTGGCAATTG
TGTTTGGGCCACGCTCTTCCAGACAGATGGGCAGGACTACAAGGCTGGCCGTGGTGGAGAACCTCAT
TAACCACTATGTGGTGGTGTGTTAGTGTGGATGAGGAAGAGCTCAGGAAGCAGCGGGAGGAGATCACTGCC
ATTGTGAAGATGCGCGTGGCTGGCACTGCCAGTGGGACCCAGCATGCCGGTGACTTCATCTGCACAGTGT
ATCTGGAAGAGAAGAAGGCAGAGACTGAGCAGCATATCAAGTCCCAGCATCCATGACTGCTGAGGAGCT
CACCTGGAGATCCTGGATCGCCGGAACGTGGGCATCAGGGAGAAGGACTATTGGACCTGCTTTGAGGTC
AACGAGAGGGAGGAGGCAGAGCGCCCCCTGCACCTTTCGGGAGAAGGTGCTGCCATCCTGCACGGGCTGG
GCACGGACAGCCACCTGGTGGTGAAGAAGCACCAGGCCATGGAGGCCATGCTGCTGTACCTGGCCAGCCG
TGTCGGTGACACCAAGCATGGCATGATGAAGTTCCGTGAGGACCCAGCCTCCTGGGCCTGGGCCTGCC
TCAGGTGGCTTCCACGATCGCTACTTCCTCAACAGCAGCTGCTTGGCGCTCTACAAGGAGGTCCGGA
GCCAGAGGCCGTGGAGCGGGGCCCTGAGACCAGTCAACGGCCTGAGAAGGAGTGGCCTATTAAGAGTCT
CAAAGTCTACCTGGGAGTGAAGAAGAACTCAGGCCACCCACCTGCTGGGGCTTACAGTGGTGCATGAG
ACAGAGAAACATGAGAAGCAGCAGTGGTACCTCTGCTGTGACACACAGATGGAGCTCCGGGAGTGGTTCCG
CTACCTTTCTGTTTGTGCAGCATGACGGCCTGGTGTGGCCCTCAGAGCCCTCACGCGTGTCCGGGCAGT
GCCTGAGGTCCGGCTGGGTAGTGTGCTACTGATCCCCCTTCGAGGTAGTAAAAATGAAATGCGCCGGAGT
GTGGCTGCCTTACCAGGACCCCTGTCTCTTCTGCGCAACGTC

AGCGGACCGACGCGTACGCGGCCGCTCGAG - GFP Tag - GTTTAA

Protein Sequence: >RG217564 representing NM_015242
 Red=Cloning site Green=Tags(s)

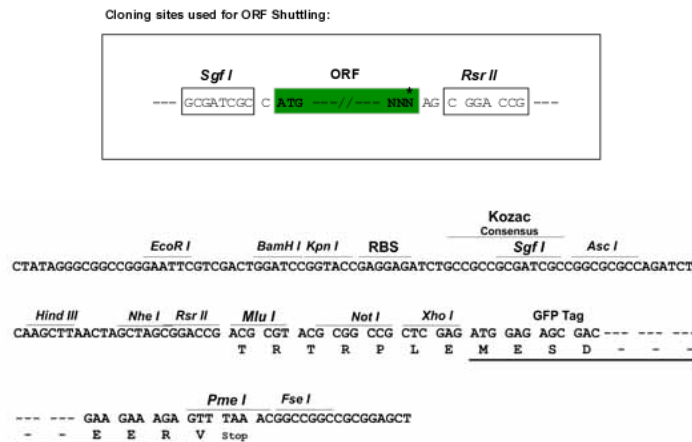
```

MTKKEEPPPSRVPRAVRVASLLSEGEELSGDDQGDDEEDDHAYEGVPNGGWHTSSLSLSLPSTIAAPHPM
DGPPGGSTPVTPVIKAGWLDKNPPQGSYIYQKRWVRLDTHLRYFDSNKDAYSKRFISVACISHVAAIGD
QKFEVITNNRTFAFRAESDVERKEWMQALQQAMAEQRRARLSSAYLLGVPGSEQPDRAQSLELRGFKNK
LYVAVVGDQKVLKYNLEEYHLGIGITFIDMSVGNVKEVDRRSFDLTPYRIFSFSDADSELEKEQWLEAMQ
GAI AEALSTSEVAERIWAAPNRF CADCGAPQPDWASINLCVVICR CAGEHRGLGAGVSKVRS LKMDRK
VWTETLIELFLQLGNGAGNRFWAANVPPSEALQPSSSPSTRRCHLEAKYREGKYRRYHPLFGNQEELDKA
LCAAVTTDLAETQALLGCGAGINCFSGDPEAPTPLALAEQAGQTLQMEFLRNNRTTEVPRLD SMKPLEK
HYSVVLPTVSHSGFLYKTASAGKLLQDRRAREEF SRRWCVLGDGVL SYFENERAVTPNGEIRASEIVCLA
VPPPDTHGFEHTFEVYTEGERLYLFGLESAEQAHEWVKCIKAFVPLAEDLLARDFERLGR LPYKAGLS
LQRAQEGWFSLSGSELRAVFPEGPCEEPLQLRKLQELSIQGDSENQVLLVERRRTLYIQGERLLDFMGW
LGAIQKAAASMGDTLSEQQLGSDIPVIVYRCVDYITQCGLTSEGIYRCKGQTSKTQRLLLESLRQDARSV
HLKEGEQHVDDVSSALKRFLRDLDPGLFTRAQRLTWLEASEIEDEEEKVSR YRELLVRLPPVNRATVKAL
ISHLYCVQCFSDTNQMNVHNLAI VFGPTL FQTDGQDYKAGRVVEDLINHYVVVF SVDEEELRKQREEITA
IVKMRVAGTASGTQHAGDFICTVYLEEKKAE TEQH IKVPASMTAEELTLEILDRRNVGIREKDYWTCFEV
NEREEAERPLHF AEKVLPI LHGLGTD SHLVVKKHQAMEALLYLASRVGDTKHGMKMFREDRSLGLGLP
SGGFHDRYF ILNSSCLRLYKEVRSQR PWSGAPETSHRPEKEWPIKSLKVYLGVKKL RPTC CWGFTVVHE
TEKHEKQQWYLC CDTQMELREWFATFLVQHDGLVWPSEPSRVSRVAVPEVRLGSVSLIPLR GSENMRRS
VAAFTADPLSLLRNV
  
```

SGPTRRRLE - GFP Tag - V

Restriction Sites: SgfI-RsrII

Cloning Scheme:

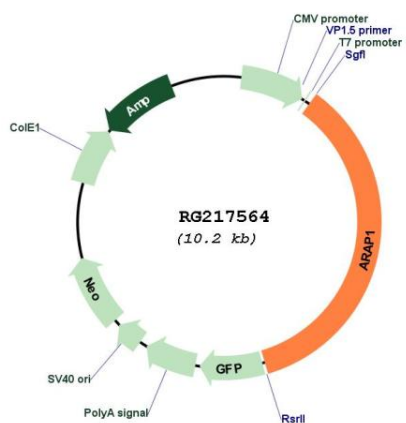


ACCN: NM_015242

ORF Size: 3615 bp

| | |
|-------------------------------|---|
| OTI Disclaimer: | The molecular sequence of this clone aligns with the gene accession number as a point of reference only. However, individual transcript sequences of the same gene can differ through naturally occurring variations (e.g. polymorphisms), each with its own valid existence. This clone is substantially in agreement with the reference, but a complete review of all prevailing variants is recommended prior to use. More info |
| OTI Annotation: | This clone was engineered to express the complete ORF with an expression tag. Expression varies depending on the nature of the gene. |
| Components: | The ORF clone is ion-exchange column purified and shipped in a 2D barcoded Matrix tube containing 10ug of transfection-ready, dried plasmid DNA (reconstitute with 100 ul of water). |
| Reconstitution Method: | <ol style="list-style-type: none">1. Centrifuge at 5,000xg for 5min.2. Carefully open the tube and add 100ul of sterile water to dissolve the DNA.3. Close the tube and incubate for 10 minutes at room temperature.4. Briefly vortex the tube and then do a quick spin (less than 5000xg) to concentrate the liquid at the bottom.5. Store the suspended plasmid at -20°C. The DNA is stable for at least one year from date of shipping when stored at -20°C. |
| RefSeq: | NM_015242.4 , NP_056057.2 |
| RefSeq Size: | 4966 bp |
| RefSeq ORF: | 3618 bp |
| Locus ID: | 116985 |
| UniProt ID: | Q96P48 |
| Cytogenetics: | 11q13.4 |
| Protein Pathways: | Endocytosis |
| Gene Summary: | The protein encoded by this gene contains SAM, ARF-GAP, RHO-GAP, ankyrin repeat, RAS-associating, and pleckstrin homology (PH) domains. In vitro, this protein displays RHO-GAP and phosphatidylinositol (3,4,5) trisphosphate (PIP3)-dependent ARF-GAP activity. The encoded protein associates with the Golgi, and the ARF-GAP activity mediates changes in the Golgi and the formation of filopodia. It is thought to regulate the cell-specific trafficking of a receptor protein involved in apoptosis. Multiple transcript variants encoding different isoforms have been found for this gene. [provided by RefSeq, Sep 2008] |

Product images:



Circular map for RG217564