

Product datasheet for **RG217562**

ARHGAP28 (NM_030672) Human Tagged ORF Clone

Product data:

Product Type:	Expression Plasmids
Product Name:	ARHGAP28 (NM_030672) Human Tagged ORF Clone
Tag:	TurboGFP
Symbol:	ARHGAP28
Synonyms:	DKFZp686A2038; FLJ10312; Rho GTPase activating protein 28
Mammalian Cell Selection:	Neomycin
Vector:	pCMV6-AC-GFP (PS100010)
E. coli Selection:	Ampicillin (100 ug/mL)



[View online »](#)

ORF Nucleotide Sequence:

>RG217562 representing NM_030672
 Red=Cloning site Blue=ORF Green=Tags(s)

TTTTGTAATACGACTCACTATAGGGCGGCCGGAATTCGTCGACTGGATCCGGTACCGAGGAGATCTGCC
 GCC**CGCATCGCC**

ATGAGGAAAAAGGATAAGCAATCTATCAGGGATGTCAGAGACATTTTTGGAGTCAGTGAATCTCCTCCTC
 GTGATACCTGTGGCAACCACACTAATCAGCTGGATGGCACCAAGGAAGAAAGAGAGCTTCCAAGAGTTAT
 CAAGACAAGTGGTTCCATGCCAGATGATGCTTCTCTCAACAGTACTACCTGTCTGACGCATCCCAGGAT
 AAAGAAGGGAGTTTTGCGGTTCCAGGAGTGACTCTGTGGCTATACTTGAGACCATTCCAGTTCTACCAG
 TTCATTCCAATGGATCACCGGAGCTGGACAGCCAGTTCAGAATGCGATAAGTGATGATTTTTCTGGA
 AAAGAACATTCCACCAGAGGCTGAAGAGCTGCTATTTGAAGTGTCTTATTCAGAAATGGTACGGAGGCT
 CTA AAAAGAAATAAACTAAGAAATCAGAGATTAAGAAAGAAGACTATGTTTTAACTAAATTTAATGTT
 AGAAAACCAGATTTGGCTTAACTGAAGCAGGAGATCTGTCTGCTGAAGACATGAAGAAAAACCGCATCT
 CTCTCTGATTGAATTGACTGCCTTTTTGATGCCTTTGGAATCAACTGAAAAGGAACAAAACAGAGAAA
 GTAAAAGGACGAGACAATGGGATTTTTGGAGTTCACCTTACAGTCTCCTGGACGGTGACCGAAAAGAAAG
 ACCCTGGAGTGAAAGTCCCCTGGTATTACAAAAATTTTTGAGAAAGTTGAGGAATCAGGTCTGGAATC
 TGAAGGAATTTTTCGACTTTCAGGATGACTGCTAAAGTCAAGCAATACCGTGAAGAACTTGATGCCAAG
 TTTAATGCTGATAAAATTTAAATGGGACAAAATGTGCCATAGAGAAGCTGCAGTAATGTTGAAAGCGTTTT
 TCAGAGAACTACCCACCTCTCTCTTCCCTGTGGAATATATACCTGCCTTCATCAGTCTAATGAAAGAGG
 GCCTCACGTCAAAGTACAGTTTCAAGCCTTACACCTCATGGTCATGGCGCTGCCTGATGCCAACAGAGAT
 GCAGCTCAGGCCCTCATGACATTTCTCAATAAAGTGATTGCCAATGAATCAAAAAACCGAATGAGTCTGT
 GGAACATTTCTACAGTGTGGCACCAAACCTTTTCTTCAGTAGAAGCAAACACTCTGATTATGAAGAATT
 ACTGTTAGCAAACACTGCGGCCACATCATCCGCTAATGCTTAAGTACCAGAAGATTTTGTGGAAGGTT
 CCATCTTTCTTAATCACTCAAGTAAGAAGAAATGAATGAAGCCACGATGCTATTGAAGAAGCAGCTCCCAA
 GTGTCAGGAAGCTGCTCAGGAGGAAGACCCTCGAGCGGGAGACTGCAAGCCCAAGACTTCAAAGGTA
 GCAAAAATCACCTCGGCAAGACGAATGTCTGACGTGCCGGAAGGAGTACACGGTCCATGCTCCACTT
 CTCTCAAAGGTGCCATGGCCATCAACTCAACAATCAAACCAAAGGACATATTGGCAAAATTTT
 AATATGAAAACAGAATACTGCCTGGCAGCGAGCTGCCTTTCTTCTAAATGGAAAATGGGTTAAAAA
 AGAAAGAGAAGAGTCGACAGAGACCAACAGGAGCCCAACATGTATTCTTCTTACTATTGGCCTGGAC
 ATCTCCACA

ACGCGTACGCGGCCGCTCGAG – GFP Tag – GTTTAA

Protein Sequence:

>RG217562 representing NM_030672
 Red=Cloning site Green=Tags(s)

MRKKDKQSIRDVRDIFGVSESPPRDTCGNHTNQLDGTKEERELPRVIKTSGSMPPDASLNSTTSDASQD
 KEGSFVPRSDSVAILETIPVLPVHSNGSPEPGQPVQNAISDDDFLEKNIPPEAEELSFEVSYSEMVT
 LKRNKLLKSEIKKEDYVLTGFNVQKTRFGLTEAGDL SAEDMKKIRHLSLIELTAFFDAFGIQLKRNKTEK
 VKGRDNGIFGVPLTVLLDGRKKDPGVKVLVLQKFFEKVEESGLESEGIFRLSGCTAKVKQYREELDAK
 FNADKFKWDMCHREAAVMLKAFFRELPTSLFPVEYIPAFISLMERGPVHVQFQALHLMVMALPDANRD
 AAQALMTFFNKVIANESKNRMSLWNI STVMAPNLFFSRSKHSDYEELLLANTAHHIIRLMLKYQKILWKV
 PSFLITQVRRMNEATMLLKKQLPSVRKLLRRKTLERETASPKTSKVLQKSPSARRMSDVPEGVIRVHAPL
 LSKVSMAIQLNNTKAKDILAKFYENRILHWQRAALSFLNGKWKKEREESTETNRSPKHVFLFTIGLD
 IST

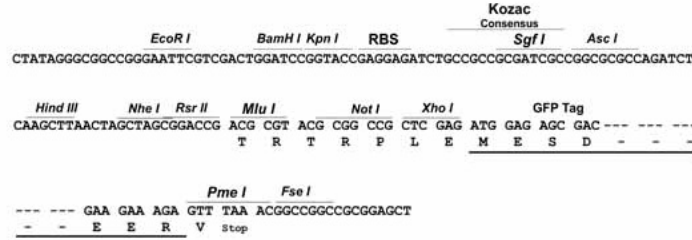
TRTRPLE – GFP Tag – V

Restriction Sites:

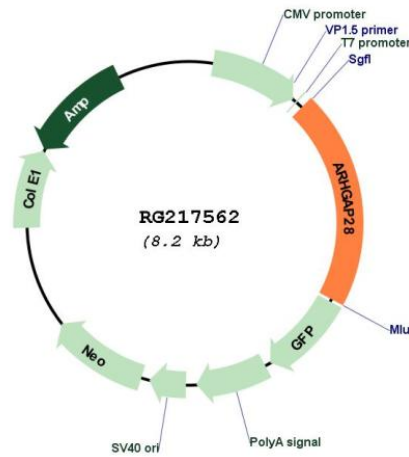
SgfI-MluI

Cloning Scheme:

Cloning sites used for ORF Shuttling:



Plasmid Map:



ACCN: NM_030672
 ORF Size: 1689 bp

OTI Disclaimer:	The molecular sequence of this clone aligns with the gene accession number as a point of reference only. However, individual transcript sequences of the same gene can differ through naturally occurring variations (e.g. polymorphisms), each with its own valid existence. This clone is substantially in agreement with the reference, but a complete review of all prevailing variants is recommended prior to use. More info
OTI Annotation:	This clone was engineered to express the complete ORF with an expression tag. Expression varies depending on the nature of the gene.
Components:	The ORF clone is ion-exchange column purified and shipped in a 2D barcoded Matrix tube containing 10ug of transfection-ready, dried plasmid DNA (reconstitute with 100 ul of water).
Reconstitution Method:	<ol style="list-style-type: none">1. Centrifuge at 5,000xg for 5min.2. Carefully open the tube and add 100ul of sterile water to dissolve the DNA.3. Close the tube and incubate for 10 minutes at room temperature.4. Briefly vortex the tube and then do a quick spin (less than 5000xg) to concentrate the liquid at the bottom.5. Store the suspended plasmid at -20°C. The DNA is stable for at least one year from date of shipping when stored at -20°C.
RefSeq:	NM_030672.2 , NP_109597.2
RefSeq Size:	2059 bp
RefSeq ORF:	1691 bp
Locus ID:	79822
Cytogenetics:	18p11.31