

Product datasheet for **RG217554**

KRT28 (NM_181535) Human Tagged ORF Clone

Product data:

Product Type:	Expression Plasmids
Product Name:	KRT28 (NM_181535) Human Tagged ORF Clone
Tag:	TurboGFP
Symbol:	KRT28
Synonyms:	K25IRS4; KRT25D
Mammalian Cell Selection:	Neomycin
Vector:	pCMV6-AC-GFP (PS100010)
E. coli Selection:	Ampicillin (100 ug/mL)



[View online »](#)

ORF Nucleotide Sequence:

>RG217554 representing NM_181535
 Red=Cloning site Blue=ORF Green=Tags(s)

TTTTGTAATACGACTCACTATAGGGCGGCCGGAATTCGTCGACTGGATCCGGTACCGAGGAGATCTGCC
 GCC**CGGATCGCC**

ATGTCTCTCCAATTTTCTAATGGATCCAGGCATGTTTGCTTAAGTCTGGAGCTGGATCTGTGACACCCC
 TCAATGGAGGTGCAGGCTTTGCAGGCAGCAGTGCATGTGGTGGCTCTGTTGCTGGAAGTGAATTTTCCTG
 TGCCCTGGGAGGGGGCTTGGGCAGTGTTCTGGTGGGAGCCATGTTGGTGGTGCCTTGGAAATGCTGCT
 TGTATTGGCTTTGCTGGAAGCGAAGGGGGACTCCTCTCTGGAATGAGAAGGTGACCATGCAAAATCTTA
 ATGACCGCTTGGCATCTACCTGGATAATGTGCGAGCTCTGGAGGAGGCAATGCTGAATTAGAGAGAAA
 AATCAAGGTTGGTATGAAAAACGGACCTGGATCTTGGCGTGGACTTGATCATGACTATAGCAGATAT
 CACCTAACAAATTGAGGATCTTAAGAATAAGATTATCTCCTCCACTACTAATGCTAATGTCATTCTGC
 AGATTGATAATGCCAGACTGGCTGCTGATGATTTAGGCTAAAGTATGAAAATGAGCTCACCTTCACCA
 AAACGTAGAGGCCGACATCAACGGATTACGGCGAGTCTGGACGAGCTGACGCTCTGCAGGACCGACCAG
 GAGCTGCAATATGAGTCTCTGAGTGAGGAGATGACATATCTCAAAAAGAACCACGAAGAGGAGATGAAGG
 CTCTGCAGTGCAGCGGCTGGGGGCAACGTGAACGTGGAGATGAACGCGGCCCGGGGGTAGACCTCGCGGT
 TTTGTTGAAACAACATGCGAGCGGAGTACGAAGCCCTTGCAGAGCAGAACCGAAGGACGCGGAGGCTGG
 TTCAATGAGAAGAGCGCCTCGCTGCAGCAACAGATCTCCACGACTCAGGCGCAGCCACTTTGCGCCGGA
 GCCAGCTCACCGAGATGAGGCGCACCTGCAGACCCTGGAGATCCAGCTGCAGTCCCTGATGGCCACGAA
 AACTCCCTGGAGTGTCTTTCGCGGAGACCGAGCACTACTGTACCGAGCTGGCGCAGATCCAGGCT
 CAGATCGGGGCCCTGGAGGAGCAGCTGCACCAGTCCAGAACCGAGACCGAGGGCCAGAAGCTGGAGTATG
 AGCATCTCTCGATGCAAGGTCCACTTGAAAAAAGAAATTGAGACCTACTGCCGCTGATAGATGGAGA
 TGGAAATTCATGCTCCAATCAAAGGGCTTTGGATCAGGAAGCCCTGGGAATTCATCTAAAGATTTATCC
 AAAACCACACTGGTAAAGACAGTGGTTGAAGAGCTAGATCAACGTGGTAAAGTTCTTTTCATCAAGGATTC
 ACTCCATTGAAGAAAAGACATCTAAAATGACCAACGGCAAGACAGAAACAAAGGGTTCCTTTC

ACGCGTACGCGGCCGCTCGAG - GFP Tag - GTTTAA

Protein Sequence:

>RG217554 representing NM_181535
 Red=Cloning site Green=Tags(s)

MSLQFSNGSRHVCLRSGAGSVRPLNGGAGFAGSSACGGSVAGSEFSCALGGGLGSVPGGSHVGGALGNAA
 CIGFAGSEGLLSGNEKVTMQLNDRLASYLDNVRALEEANAELERKIKGWYKEYGPGSCRGLDHDYSRY
 HLTIEDLKNKIISSTTNANVILQIDNARLAADDFRLKYENELTLHQNV EADINGLRRVLDDELTLCRTDQ
 ELQYESLSEEMTYLKNHEEEMKALQCAAGGNVNVEMNAAPGVDLAVLLNNMRAEYEALEQNRKDAEAW
 FNEKSASLQQQISHDGAATFARSQLEMRRLQTLEIQLQSLMATKHSLECSLTETESNYCTQLAQIQA
 QIGALEEQLHQVRTETEGQKLEYEHLLDVKVHLEKEIETYCRLLIDGDNCSKSKGFGSGSPGNSSKDL
 KTTLVKTVVEELDQRGKVLSSRIHSIEEKTSKMTNGKTEQRVPPF

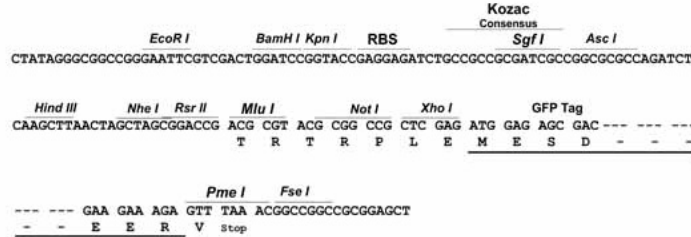
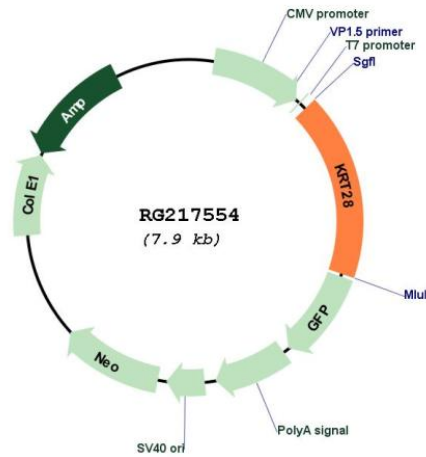
TRTRPLE - GFP Tag - V

Restriction Sites:

Sgfl-MluI

Cloning Scheme:

Cloning sites used for ORF Shutting:


Plasmid Map:

ACCN: NM_181535

ORF Size: 1392 bp

OTI Disclaimer: The molecular sequence of this clone aligns with the gene accession number as a point of reference only. However, individual transcript sequences of the same gene can differ through naturally occurring variations (e.g. polymorphisms), each with its own valid existence. This clone is substantially in agreement with the reference, but a complete review of all prevailing variants is recommended prior to use. [More info](#)
OTI Annotation: This clone was engineered to express the complete ORF with an expression tag. Expression varies depending on the nature of the gene.

Components:	The ORF clone is ion-exchange column purified and shipped in a 2D barcoded Matrix tube containing 10ug of transfection-ready, dried plasmid DNA (reconstitute with 100 ul of water).
Reconstitution Method:	<ol style="list-style-type: none">1. Centrifuge at 5,000xg for 5min.2. Carefully open the tube and add 100ul of sterile water to dissolve the DNA.3. Close the tube and incubate for 10 minutes at room temperature.4. Briefly vortex the tube and then do a quick spin (less than 5000xg) to concentrate the liquid at the bottom.5. Store the suspended plasmid at -20°C. The DNA is stable for at least one year from date of shipping when stored at -20°C.
RefSeq:	<u>NM_181535.2</u> , <u>NP_853513.1</u>
RefSeq Size:	1656 bp
RefSeq ORF:	1395 bp
Locus ID:	162605
UniProt ID:	<u>Q7Z3Y7</u>
Cytogenetics:	17q21.2
Gene Summary:	This gene encodes a member of the type I (acidic) keratin family, which belongs to the superfamily of intermediate filament (IF) proteins. Keratins are heteropolymeric structural proteins which form the intermediate filament. These filaments, along with actin microfilaments and microtubules, compose the cytoskeleton of epithelial cells. The type I keratin genes are clustered in a region of chromosome 17q12-q21. [provided by RefSeq, Jul 2009]