

Product datasheet for **RG217550**

TRPM3 (NM_206946) Human Tagged ORF Clone

Product data:

Product Type:	Expression Plasmids
Product Name:	TRPM3 (NM_206946) Human Tagged ORF Clone
Tag:	TurboGFP
Symbol:	TRPM3
Synonyms:	GON-2; LTRPC3; MLSN2
Mammalian Cell Selection:	Neomycin
Vector:	pCMV6-AC-GFP (PS100010)
E. coli Selection:	Ampicillin (100 ug/mL)
ORF Nucleotide Sequence:	>RG217550 representing NM_206946 Red=Cloning site Blue=ORF Green=Tags(s)

TTTTGTAATACGACTCACTATAGGGCGGCCGGAATTCGTCGACTGGATCCGGTACCGAGGAGATCTGCC
GCC**CGATCGCC**

ATGTATGTGCGAGTATCTTTTGATACAAAACCTGATCTCCTCTTACACCTGATGACCAAGGAATGGCAGT
TGGAGCTTCCCAAGCTTCTCATCTGTCCATGGGGCCGCAGAACTTTGAACTCCAGCCAAAACCTCAA
GCAAGTCTTTGGAAAGGGCTCATCAAAGCAGCAATGACAACCTGGAGCGTGGATATTCCTGGAGGGGT
AACACAGGTGTTATTCGTCATGTTGGCGATGCCTTGAAGGATCATGCCTCTAAGTCTCGAGGAAAGATAT
GCACCATAGGTATTGCCCTGGGAATTGTGGAAAACAGGAGGACCTCATTGGAAGAGATGTTGTCCG
GCCATACAGACCATGTCCAATCCCATGAGCAAGCTCACTGTTCTCAACAGCATGCATTCCTCACTCATT
CTGGCTGACAACGGGACCACTGGAAAATATGGAGCAGAGGTGAACTTCGAAGACAACCTGAAAAAGCATA
TTTCACTCCAGAAGATAAACACAAGATGCCTGCCGTTTTCTCTCTTGACTCCCGCTTGTTTTATTCATT
TTGGGGTAGTTGCCAGTTAGACTCAGTTGGAATCGGTCAAGGTGTTTCTGTGGTGGCACTCATAGTGAA
GGAGGACCAATGTGATCTCGATTGTTTGGAGTACCTTCGAGACACCCCTCCCGTGCCAGTGGTTGTCT
GTGATGGGAGTGGACGGGCATCGGACATCCTGGCCTTTGGGCATAAACTCAGAAGAAGGCGGACTGAT
AAATGAATCTTTGAGGGACAGCTGTTGGTGACTATACAGAAGACTTTACATACACTCGAACCCAAGCT
CAGCATCTGTTTCATCCTCATGGAGTGCATGAAGAAGAAGGAATTGATTACGGTATTTCCGATGGGAT
CAGAAGGACACCAGGACATTGATTTGGCTATCCTGACAGCTTTACTCAAAGGAGCCAATGCCTCGGCCCC
AGACCAACTGAGCTTAGCTTTAGCCTGGAACAGAGTGCACATCGCTCGCAGCCAGATCTTTATTTACGGG
CAACAGTGGCCGGTGGGATCTCTGGAGCAAGCCATGTTGGATGCCTTAGTTCTGGACAGAGTGGATTTTG
TGAAATTAATCATAGAGAATGGAGTAAGCATGCACCGTTTTCTCACCATCTCCAGACTAGAGGAATTGTA
CAATACGAGACATGGCCCTCAAATACATTGTACCACTGGTCAGGGATGTCAAAAAGGGGAACCTGCC
CCAGACTACAGAATCAGCCTGATTGACATCGGCCTGGTATCGAGTACCTGATGGCGGGGCTTATCGCT
GCAACTACACGCGCAAGCGCTTCCGGACCCTTACCACAACCTCTTCGGCCCCAAGAGGCCCAAAGCCTT
GAAACTGCTGGGAATGGAGGATGATATTCCTTAGGCGGAGGAAGAAAGACAACCAAGAAACGTGAAGAA



[View online »](#)

GAGGTGGACATTGACTTGGATGATCCTGAGATCAACCACTTCCCCTTCCCTTCCATGAGCTCATGGTGT
 GGGCTGTTCTCATGAAGCGGCAGAAAGATGGCCCTGTTCTTCTGGCAGCACGGTGAGGAGGCCATGGCCAA
 GGCCCTGGTGGCCTGCAAGCTCTGCAAAGCCATGGCTCATGAGGCCTCTGAGAACGCATGGTTGACGAC
 ATTTCCAGGAGCTGAATCACAATTCAGAGACTTTGGCCAGCTGGCTGTGGAGCTCCTGGACCAGTCTCT
 ACAAGCAGGACGAACAGCTGGCCATGAACTGCTGACGTATGAGCTGAAGAACTGGAGCAACGCCACGTG
 CCTGCAGCTTGCCGTGGCTGCCAAACACCGCGACTTTCATCGCGCACACGTGCAGCCAGATGCTGCTACC
 GACATGTGGATGGGCGGCTCCGCATGCGCAAGAACTCAGGCCTCAAGGTAATTTGGGAATTTCTACTTC
 CTCCTTCAATTCAGCTTGGAGTTCAAGAACAAGACGACATGCCCTATATGTCTCAGGCCAGGAAAT
 CCACCTCCAAGAGAAGGAGGCAGAGAAGAACAGAGAAGCCACAAAAGGAAAAAGAGGAAGGACATGGAG
 CTCACAGCAATGTTGGGACGAAACAACGGGAGTCTCCAGGAAGAAGGATGAAGAGGAAGTTTCTAGAGCA
 AGCACCAGTTAATCCCCCTCGGCAGAAAAATCTATGAATCTACAATGCACCCATCGTGAAGTTCTGGTT
 CTACACACTGGCGTATATCGGATACCTGATGCTCTTCACTATATCGTGTAGTGAAGATGGAACGCTGG
 CCGTCCACCCAGGAATGGATCGTAATCTCTATATTTTACCCTGGGAATAGAAAAGATGAGAGAGATTC
 TGATGTCAGAGCCAGGAAGTTGCTACAGAAAGTGAAGGTATGGCTGCAGGAGTACTGGAATGTCACGGA
 CCTCATCGCCATCCTTCTGTTTTCTGTGCGAATGATCCTTCGTCTCCAAGACCAGCCCTCAGGAGTGAC
 GGGAGGGTCATCTACTGGTGAACATCATTTACTGGTATATCCGTCTCCTAGACATCTTCGGCGTGAACA
 AGTATTTGGGCCGTATGTAATGATGATTGGAAAAATGATGATAGACATGATGTACTTTGTCTATCATTAT
 GCTGGTGGTTCTGATGAGCTTTGGGTCGCCAGGCAAGCCATCCTTTTTCCCAATGAGGAGCCATCATGG
 AAAGTGGCAAGAACATCTTCTACATGCCCTATTGGATGATTTATGGGAAGTGTGGGGACAGATAG
 ACCCTCCTGTGGACAGAATGAGACCCGAGAGGATGGTAAAAATCCAGCTGCCCTCCGCAAGACAGG
 AGCTTGGATCGTGCCGGCCATCATGGCTGCTACCTCTTAGTGGCAAACATCTTGCTGGTCAACCTCCTC
 ATTGCTGTCTTAAACAATACATTTTTGAAGTAAAAATCGATATCCAACCAAGTCTGGAAGTTTCTAGAGT
 ATCAGTCACTGACTTTCCATGAAAGGCCAGTTCTGCCCCACCAGTATCTTCCAGCCATGACATGAC
 CATGATATTCAGCACCTGTGCTGCCGATGGAGGAAACAGGAGCGACCCGGATGAAAGGGACTACGGC
 CTGAAACTCTTACATAACCGATGATGAGCTCAAGAAAGTACATGACTTTGAAGAGCAATGCATAGAAGAAT
 ACTTCAGAGAAAAGGATGATCGGTTCAACTCATCTAATGATGAGAGGATACGGGTGACTTCAGAAAAGGT
 GGAGAACATGTCTATGCGGCTGGAGGAAGTCAACGAGAGAGAGCACTCCATGAAGGCTTCACTCCAGACC
 GTGGACATCCGGCTGGCGCAGCTGGAAGACCTTATCGGGCGCATGGCCACGGCCCTGGAGCGCTGACAG
 GTCTGGAGCGGGCCGAGTCCAACAAAATCCGCTCGAGGACCTCGTCAAGTGCACGGACGCCGCTACAT
 TGTCCGTGAGGACGCTTCAACAGCCAGGAAGGAACACCTTCAAGCTCCAAGAGAGTATAGACCCTGCA
 GGTGAGGAGACCATGTCCCAACTTCTCCAACCTAATGCCCGTATGCGAAGCCATTCTTCTATTTCGG
 TCAATATGAAAGCAAAGGTGGTATAGAAAAGTTGGAAAGTATTTTTAAAGAAAGTCCCTGAGCCCTACA
 CCGGGCTACTAGTTCCTACTCTGTAGCAAAAGAACCCAAAGCTCCTGCAGCCCTGCCAACACCTTGGCC
 ATTGTTCTGATTCCAGAAGACCATCATCGTGTATAGACATCTATGTCTCTGCTATGGATGAGCTCCACT
 GTGATATAGACCCTCTGGACAATTCCTGGAACATCCTTGGGCTGGGCGAGCCAAGCTTTTCAACTCCAGT
 ACCTTCCACAGCCCTTCAAGTAGTGCCTATGCAACACTTGCACCCACAGACAGACCTCCAAGCCGGAGC
 ATTGATTTTGGAGACATCACCTCCATGGACACTAGATCTTTTTCTCAGACTACCCACCTCCAGAAAT
 GCCAAAACCCCTGGGACTCAGAGCCTCCGATGTACCACACCATTGAGCGTCCAAAAGTAGCCGCTACCT
 AGCCACCACACCTTTCTTCTAGAAGAGGCTCCCATTTGAAATCTCATAGCTTTATGTTTTCCCTCA
 AGGAGCTATTATGCCAACTTTGGGGTGCCTGTAAAAACAGCAGAATACACAAGTATTACAGACTGTATTG
 ACACAAGGTGTGCAATGCCCTCAAGCAATTGCGGACAGAGCTGCCCTTCCCTGGAGGTCTTGGAGACAA
 AGTGGAGGACTTAACTTGTGCCATCCAGAGCGAGAAGCAGAAGTGAAGTCAACCCAGCTCTGACAGTGA
 GAGAATGAGGCCAAAGCCGAGAGCCACCATTGCAATATCCTCCAGGAGGGTGAATACTCAGAGAGAA
 CCCTGTCCAACAACATCACTGTTCCCAAGATAGAGCGCGCAACAGCTACTCGGCAGAGGAGCCAAAGTGC
 GCCATATGCACACACCAGGAAGAGCTTCTCCATCAGTGACAACTCGACAGGCAGCGGAACACAGCAAGC
 CTGCGAAATCCCTTCCAGAGAAGCAAGTCTCCAAGCCGAGGGCCGAGGGGACAGCCTGTCCATGAGGA
 GACTGTCCAGAACATCGGCTTTCCAAGCTTTGAAAGCAAGCACAAAC

ACGCGTACGCGGCCGCTCGAG – GFP Tag – GTTTAA

Protein Sequence: >RG217550 representing NM_206946
 Red=Cloning site Green=Tags(s)

```

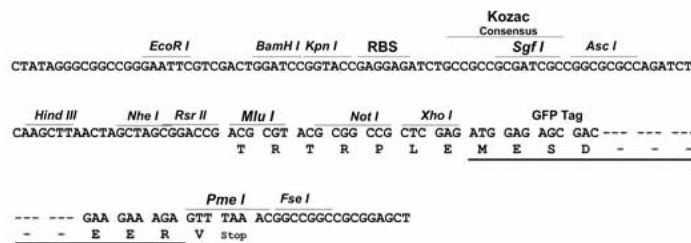
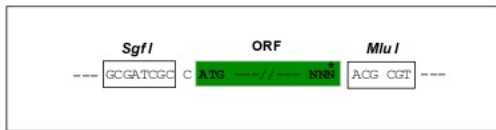
MYVRVSFDTKPDL LHLMTKEWQLELPKLLISVHGGLQNFELQPKLKQVFGKGLIKAAMTTGAWIFTGGV
NTGVIRHVGDAL KDHASKSRGKI CTIGIAPWGI VENQEDLIGRDVVRPYQTMSNPM SKLTVLNSMHSHF I
LADNGTTGKYGA EVKLRRQLEKHI SLQKINTRCLPFFSLDSRLFYSFWGSCQLDSVIGQGVPVALIVE
GGPNVISIVLE YLRDTPVPV VVCDGSGRASDILAFGHKYSEEGGLINESLRDQLLVITIQKFTFTYTRTQA
QHLFIILMECMKKELITVFRMGSEGHQDIDLAILTALLKGANASAPDQLSLALAWN RVDIARSQIFIYG
QQWPVGSLEQAML DALVLD RVDVFKLLIENGVS MHRFLTISRLEELYNTRHGPSNTLYHLVRDVKKGNLP
PDYRISLIDIGL VIEYLMGGAYRCNYTRKRFRTLYHNLFGPKRPKALKLLGMEDDIPLRRGRKTTKKREE
EVDIDLDDPEIN HFPFPHELMVAVLMKRQKMA LFFWQHGE EAMAKALVACKLCKAMAHEASENDM VDD
ISQELNHSRDFGQLAVELLDQSYKQDEQLAMKLLTYELKNWSNATCLQLAVA AKHRDFAHTCSQMLLT
DMWMGRLRMRKNSGLKVILGILLPPSILSLEFKNKDDMPYMSQAQEIHLQEKEAEEPEKPTKEKEEEDME
LTAMLGRNNGESSRKKDEEEVQSKHRLIPLGRKIYEFYNAPIVKFWFYTLAYIGYLMFNIVLVKMERW
PSTQEWIVISYIFTLGIEKMREILMSEPGKLLQKVQVWLQEYWNVTDLIAILLFSVGMILRLQDQFRSD
GRVIYCVNIYIYWRLLDIFGVNKYLGPIYMMIGKMMIDMMYFVIMLVVLM SFGVARQAILFPNEEPSW
KLAKNIFYMPYWMIYGEV FADQIDPPCGQNETREDGKIIQLPPCKTGAWI VPAIMACYLLVANILLVNL
IAVFNNTFFE VKSISNQVVKFQRYQLIMTFHERPVLPPPLIIFSHMTMIFQHLCCRWRKHESDPDERDYG
LKLFI TDDDELK VHD FEEQCIEEYFREKDDRFNSSNDERIRVTSERVENMSMRLEEVNEREHSMKASLQT
VDIRLAQLEDLIGRMATALERL TGLERAESNKIRSRTSSDCTDAAYIVRQSSFN SQEGNTFKLQESIDPA
GEETMSPTSPTLMPRMRSHSFYSVNMKDKGGIEKLESIFKERSLSLHRATSSHVAKEPKAPAAPANTLA
IVPDSRRPSSCIDIYVSAMDELHCDIDPLDNSVNILGLGEP SFSTPVPSTAPSSSAYATLAPTDRPPSRS
IDFEDITSM DTRSFSSDYTHLPECQNPWDSEPPMYHTIERSKSSRYLATT PFLLEEAPIVKS HSFMFSPS
RSYYANFGVPVKTA EYTSITDCIDTRCVNAPQAIADRAAFPGGLGDKVEDLTCCHPEREAELSHPSSDSE
ENEAKGRRATIAISSQEGDNSERTLSNNITVPKIERANSYSAEEPSAPYA HTRKSFISDKLDRQNTAS
LRNPFQRSKSSKPEGRGDSL MRRLSRTSAFQSFESKHN
    
```

TRTRPLE - GFP Tag - V

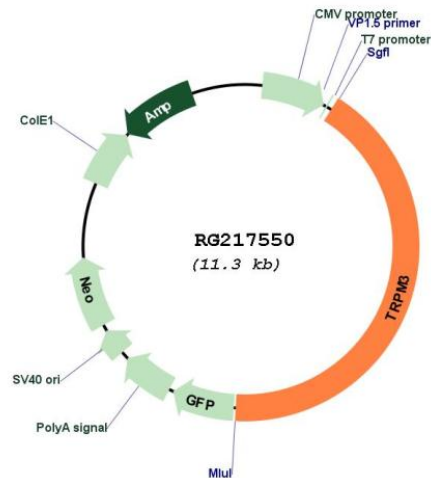
Restriction Sites: SgfI-MluI

Cloning Scheme:

Cloning sites used for ORF Shuttling:



Plasmid Map:



ACCN: NM_206946

ORF Size: 4737 bp

OTI Disclaimer: The molecular sequence of this clone aligns with the gene accession number as a point of reference only. However, individual transcript sequences of the same gene can differ through naturally occurring variations (e.g. polymorphisms), each with its own valid existence. This clone is substantially in agreement with the reference, but a complete review of all prevailing variants is recommended prior to use. [More info](#)

OTI Annotation: This clone was engineered to express the complete ORF with an expression tag. Expression varies depending on the nature of the gene.

Components: The ORF clone is ion-exchange column purified and shipped in a 2D barcoded Matrix tube containing 10ug of transfection-ready, dried plasmid DNA (reconstitute with 100 ul of water).

Reconstitution Method:

1. Centrifuge at 5,000xg for 5min.
2. Carefully open the tube and add 100ul of sterile water to dissolve the DNA.
3. Close the tube and incubate for 10 minutes at room temperature.
4. Briefly vortex the tube and then do a quick spin (less than 5000xg) to concentrate the liquid at the bottom.
5. Store the suspended plasmid at -20°C. The DNA is stable for at least one year from date of shipping when stored at -20°C.

RefSeq: [NM_206946.5](#)

RefSeq Size:	6015 bp
RefSeq ORF:	4740 bp
Locus ID:	80036
Cytogenetics:	9q21.12-q21.13
Protein Families:	Druggable Genome, Ion Channels: Transient receptor potential, Transmembrane
Gene Summary:	The product of this gene belongs to the family of transient receptor potential (TRP) channels. TRP channels are cation-selective channels important for cellular calcium signaling and homeostasis. The protein encoded by this gene mediates calcium entry, and this entry is potentiated by calcium store depletion. Alternatively spliced transcript variants encoding different isoforms have been identified. [provided by RefSeq, Jul 2008]