

Product datasheet for **RG217546**

JKAMP (NM_001098625) Human Tagged ORF Clone

Product data:

Product Type:	Expression Plasmids
Product Name:	JKAMP (NM_001098625) Human Tagged ORF Clone
Tag:	TurboGFP
Symbol:	JKAMP
Synonyms:	C14orf100; C24orf100; CDA06; HSPC213; HSPC327; JAMP
Mammalian Cell Selection:	Neomycin
Vector:	pCMV6-AC-GFP (PS100010)
E. coli Selection:	Ampicillin (100 ug/mL)
ORF Nucleotide Sequence:	>RG217546 representing NM_001098625 Red=Cloning site Blue=ORF Green=Tags(s)

TTTTGTAATACGACTCACTATAGGGCGGCCGGAATTCGTCGACTGGATCCGGTACCGAGGAGATCTGCC
GCC**CGATCGCC**

ATGGCATGCCTTGGACTTTATTGTGGGAAGACCCTATTATTTAAAAATGGCTCAACTGAAATATATGGAG
AATGTGGGGTATGCCAAGAGGACAGAGAACGAATGCACAGAAATATTGTCAGCCTTGCACAGAATCTCC
TGAACCTTATGATTGGCTCTATCTTGGATTTATGGCAATGCTTCCTCTGGTTTTACATTGGTTCTTCATT
GAATGGTACTCGGGGAAAAAGAGTTCAGCGCACTTTTCCAACACATCACTGCATTATTTGAATGCAGCA
TGGCAGCTATTATCACCTTACTTGTGAGTGATCCAGTTGGTGTCTTTATATTCTGTTTCATGTCGAGTATT
GATGCTTTCTGACTGGTACACGATGCTTTACAACCAAGTCCAGATTACGTTACACAGTACACTGTACT
CATGAAGCCGTCTACCCACTATATACCATTGTATTTATCTATTACGCATTCTGCTTGGTATTAATGATGC
TGCTCCGACCTCTTCTGGTGAAGAAGATTGCATGTGGGTAGGGAAATCTGATCGATTTAAAAGTATTTA
TGCTGCACTTTACTTCTCCCAATTTAAACCGTCTTCAGGCAGTTGGTGGAGGCCTTTTATATTACGCC
TTCCCATACATTATATTAGTGTTATCTTTGGTACTCTGGCTGTGTACATGTCTGCTTCTGAAATAGAGA
ACTGCTATGATCTTCTGGTCAGAAAGAAAAGACTTATTGTTCTCTTCAGCCACTGGTACTTCATGCCTA
TGAATAATCTCCATTTCCAGAGTGGATAAACTTGAGCAAGATTTGCCCTTTTGGCTTTGGTACCTACA
CCAGCCCTTTTTACTTGTTCAGTCAAAAATTTACCGAACCTTCAAGGATACTCTCAGAAGGAGCCAATG
GACAC

ACGCGTACGCGGCCGCTCGAG - GFP Tag - GTTTAA



[View online »](#)

Protein Sequence: >RG217546 representing NM_001098625
 Red=Cloning site Green=Tags(s)

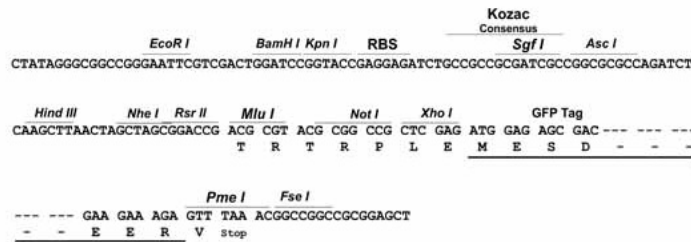
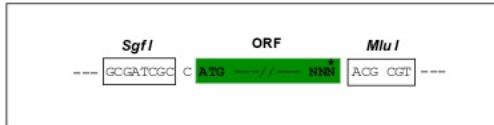
MACLGLYCGKTLFLKNGSTEIYGECGVCPRGQRTNAQKYCQPCTESPELYDWLYLGFMAMLPLVLHWFII
 EWYSGKKSSSALFQHITALFECSMAAIIITLLVSDPVGVLVIRSCRVLMLSDWYTMLYNPSPDYVTTVHCT
 HEAVYPLYTIVFIYYAFCLVLMMLLRPLLVKKIACGLGKSDRFKSIYAALYFFPILTVLQAVGGGLLYYA
 FPYIILVLSLVTLAVYMSASEIENCYDLLVRKKRILVLFSHWLLHAYGIISISRVDKLEQDLPLLALVPT
 PALFYLF TAKFTEPSRILSEGANGH

TRTRPLE - GFP Tag - V

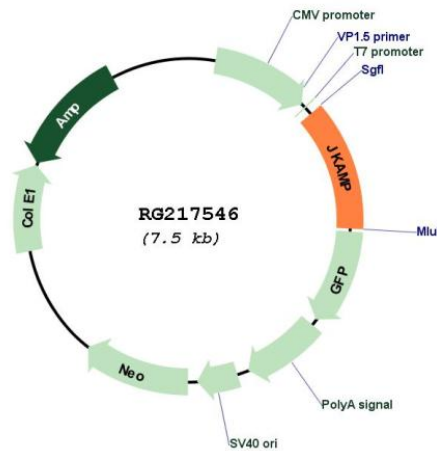
Restriction Sites: SgfI-MluI

Cloning Scheme:

Cloning sites used for ORF Shuttling:



Plasmid Map:



ACCN: NM_001098625

ORF Size: 915 bp

OTI Disclaimer:	The molecular sequence of this clone aligns with the gene accession number as a point of reference only. However, individual transcript sequences of the same gene can differ through naturally occurring variations (e.g. polymorphisms), each with its own valid existence. This clone is substantially in agreement with the reference, but a complete review of all prevailing variants is recommended prior to use. More info
OTI Annotation:	This clone was engineered to express the complete ORF with an expression tag. Expression varies depending on the nature of the gene.
Components:	The ORF clone is ion-exchange column purified and shipped in a 2D barcoded Matrix tube containing 10ug of transfection-ready, dried plasmid DNA (reconstitute with 100 ul of water).
Reconstitution Method:	<ol style="list-style-type: none">1. Centrifuge at 5,000xg for 5min.2. Carefully open the tube and add 100ul of sterile water to dissolve the DNA.3. Close the tube and incubate for 10 minutes at room temperature.4. Briefly vortex the tube and then do a quick spin (less than 5000xg) to concentrate the liquid at the bottom.5. Store the suspended plasmid at -20°C. The DNA is stable for at least one year from date of shipping when stored at -20°C.
RefSeq:	NM_001098625.2 , NP_001092095.1
RefSeq Size:	2359 bp
RefSeq ORF:	918 bp
Locus ID:	51528
UniProt ID:	Q9P055
Cytogenetics:	14q23.1
Protein Families:	Transmembrane
Gene Summary:	May be a regulator of the duration of MAPK8 activity in response to various stress stimuli. Facilitates degradation of misfolded endoplasmic reticulum (ER) luminal proteins through the recruitment of components of the proteasome and endoplasmic reticulum-associated degradation (ERAD) system (By similarity).[UniProtKB/Swiss-Prot Function]