

Product datasheet for **RG217510**

SVH (ARMC10) (NM_031905) Human Tagged ORF Clone

Product data:

Product Type:	Expression Plasmids
Product Name:	SVH (ARMC10) (NM_031905) Human Tagged ORF Clone
Tag:	TurboGFP
Symbol:	SVH
Synonyms:	PNAS-112; PNAS112; PSEC0198; SVH
Mammalian Cell Selection:	Neomycin
Vector:	pCMV6-AC-GFP (PS100010)
E. coli Selection:	Ampicillin (100 ug/mL)
ORF Nucleotide Sequence:	>RG217510 representing NM_031905 Red=Cloning site Blue=ORF Green=Tags(s)

TTTTGTAATACGACTCACTATAGGGCGGCCGGAATTCGTCGACTGGATCCGGTACCGAGGAGATCTGCC
GCC**CGATCGCC**

ATGGGTGGCCCCGGGGCGGGCTGGGTGGCGGGGCCTGCTGCTCGGCGGGGCGCCTGCTACTGCA
TTTACAGGCTGACCCGGGGTCGGCGGGGGCGACCGCGAGCTCGGGATACGCTCTTGAAGTCCGCAGG
TGCCCTGGAAGAAGGGACGTCAGAGGGTCAGTTGTGGGGCGCTCGGCCGGCCTCAGACGGGAGGTACC
TGGGAGTCACAGTGGTCCAAGACCTCGCAGCCTGAAGACTTAACTGATGGTTCATATGATGATGTTCTAA
ATGCTGAACAACCTCAGAACTCCTTACCTGCTGGAGTCAACGGAGGATCCTGTAATTATTGAAAGAGC
TTTGATTACTTTGGGTAACAATGCAGCCTTTTCAGTTAACCAAGCTATTATTCGTGAATTGGGTGGTATT
CCAATTGTTGCAAAACAAATCAACCATTCCAACAGAGTATTAAGAGAAAGCTTTAAATGCACTAAATA
ACCTGAGTGTGAATGTTGAAAATCAAAATCAAGATAAAGATATACATCAGTCAAGTATGTGAGGATGTCTT
CTCTGGTCTCTGAACCTGCTGTGCAGCTGGCTGGACTGACATTGTTGACAAACATGACTGTTACCAAT
GACCACCAGCACATGCTTACAGTTACATTACAGACCTGTTCCAGGTGTTACTTACTGAAAATGAAAACA
CGAAGGTGCAAGTTTTGAACTGCTTTTGAATTTGCTGAAAATCCAGCCATGACAGAAGGACTTCTCCG
TGCCCAAGTGGATTATCATTCTTTCCCTTTATGACAGCCACGTAGCAAAGGAGATTCTTCTTCGAGTA
CTTACGCTATTTTCAGAAATAAAGAAGTGCCTCAAAATAGAAGGCCATTTAGCTGTGCAGCCTACTTTCA
CTGAAGGTTTCATTGTTTTCTGTTTACATGGAGAAGAATGTGCCAGAAAATAAGAGCTTTAGTTGATCA
CCATGATGCAGAGGTGAAGGAAAAGGTTGTAACAATAATACCCAAAATC

ACGCGTACGCGGCCGCTCGAG - GFP Tag - GTTTAA



[View online »](#)

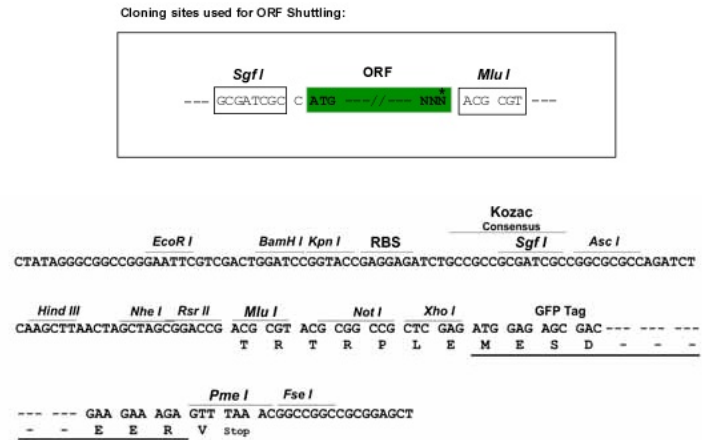
Protein Sequence: >RG217510 representing NM_031905
 Red=Cloning site Green=Tags(s)

MGGPRGAGWVAAGLLL GAGACYCIYRL TRGRRRGDREL GIRSSKSAGALEEGT SEGQLCGRSARPQTGGT
 WESQWSKTSQPEDLTDGSYDDVLNAEQLQKLLYLLESTEDPVIIERALITLGNNAF SVNQAI IRELGGI
 PIVANKINHNSNQSIKEKALNALNLSVNVENQIKIKIYISQVCEDVFSGPLNSAVQLAGL TLLTNMTVTN
 DHQHMLHSYITDLFQVLLTGNGNTKVQVLKLLNLSNPAMTEGLLRAQVDSSFLSLYDSHVAKEILLRV
 LTLFQNIKNCLKIEGHLAVQPTFTEGSLFLLHGEECAQKIRALVDHDAEVKEKVVTIIPKI

TRTRPLE - GFP Tag - V

Restriction Sites: SgfI-MluI

Cloning Scheme:



ACCN: NM_031905

ORF Size: 1029 bp

OTI Disclaimer: The molecular sequence of this clone aligns with the gene accession number as a point of reference only. However, individual transcript sequences of the same gene can differ through naturally occurring variations (e.g. polymorphisms), each with its own valid existence. This clone is substantially in agreement with the reference, but a complete review of all prevailing variants is recommended prior to use. [More info](#)

OTI Annotation: This clone was engineered to express the complete ORF with an expression tag. Expression varies depending on the nature of the gene.

Components: The ORF clone is ion-exchange column purified and shipped in a 2D barcoded Matrix tube containing 10ug of transfection-ready, dried plasmid DNA (reconstitute with 100 ul of water).

Reconstitution Method:

1. Centrifuge at 5,000xg for 5min.
2. Carefully open the tube and add 100ul of sterile water to dissolve the DNA.
3. Close the tube and incubate for 10 minutes at room temperature.
4. Briefly vortex the tube and then do a quick spin (less than 5000xg) to concentrate the liquid at the bottom.
5. Store the suspended plasmid at -20°C. The DNA is stable for at least one year from date of shipping when stored at -20°C.

RefSeq: [NM_031905.5](#)

RefSeq Size: 2629 bp

RefSeq ORF: 1032 bp

Locus ID: 83787

UniProt ID: [Q8N2F6](#)

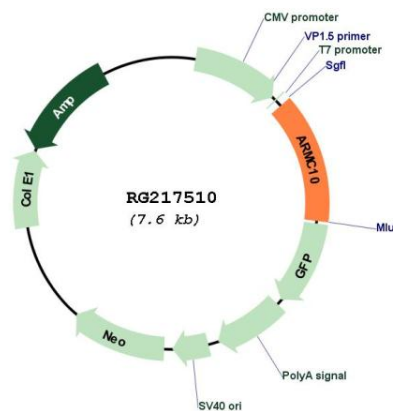
Cytogenetics: 7q22.1

Domains: DUF634

Protein Families: Transmembrane

Gene Summary: This gene encodes a protein that contains an armadillo repeat and transmembrane domain. The encoded protein decreases the transcriptional activity of the tumor suppressor protein p53 through direct interaction with the DNA-binding domain of p53, and may play a role in cell growth and survival. Upregulation of this gene may play a role in hepatocellular carcinoma. Alternatively spliced transcript variants encoding multiple isoforms have been observed for this gene, and a pseudogene of this gene is located on the long arm of chromosome 3. [provided by RefSeq, Sep 2011]

Product images:



Circular map for RG217510