

Product datasheet for **RG217495**

PPTC7 (NM_139283) Human Tagged ORF Clone

Product data:

Product Type:	Expression Plasmids
Product Name:	PPTC7 (NM_139283) Human Tagged ORF Clone
Tag:	TurboGFP
Symbol:	PPTC7
Synonyms:	TA-PP2C; TAPP2C
Mammalian Cell Selection:	Neomycin
Vector:	pCMV6-AC-GFP (PS100010)
E. coli Selection:	Ampicillin (100 ug/mL)
ORF Nucleotide Sequence:	>RG217495 representing NM_139283 Red=Cloning site Blue=ORF Green=Tags(s)

TTTTGTAATACGACTCACTATAGGGCGGCCGGAATTCGTCGACTGGATCCGGTACCGAGGAGATCTGCC
GCC**CGATCGCC**

ATGTTCTCGGTCCTCTCGTACGGGCGGCTGGTGGCCCGCGCCGTGCTCGGCGGCTCTCGCAGACCGACC
CCAGGGCCGGCGGCGGCGGCGGCGGCGACTACGGACTGGTGACGGCCGGCTGCGGCTTCGGGAAGGACTT
CCGTAAGGGCTCCTCAAGAAGGGCGCGTGTACGGGACGACGCGTGTTCGTGGCCCGCACCGTTCC
GCGGACGTGCTCGGGTTGCAGATGGTGTAGGAGGCTGGAGAGACTATGGAGTTGATCCATCTCAATTCT
CAGGGACTTTAATGCGGACGTGTGAACGTTTAGTAAAAGAAGGACGGTTCGTACCTAGTAATCCCATTGG
AATTCTCACACAAGCTACTGTGAGTTGCTGCAAATAAAGTCCCTTTGCTCGGTAGCAGCACCGCTGC
ATTGTGGTGTGACAGAACAGCCACCGCTTACACACAGCAAACCTGGGCGATTAGGCTTCTGGTTG
TCAGGGGTGGTGAAGTCGTGCACCGATCAGATGAGCAGCAGCATTACTTCAACACTCCATTCCAGCTCTC
AATCGTCCCCCTGAAGCCGAGGGAGTCGTCTTGAGCGACAGTCCGGATGCTGCTGATAGCACGTCTTC
GATGTCCAGCTAGGAGACATTATCCTGACGGCAACAGATGGACTCTTTGACAACATGCCTGATTATGA
TTCTTCAGGAGCTAAAAAAGTTAAAGAATTCAAATTATGAGAGTATAACACAGACTGCCAGAAGCATTGC
TGAGCAAGCTCATGAGCTGGCCTATGACCCAAATTATATGTACCTTTTGACAGTTTGCATGTGACAAT
GGATTGAATGTGAGAGGTGAAAAGCCAGATGACATCACCGTCTTCTTTCAATAGTGGCTGAGTATACAG
AC

AG**CGGACCG**ACGCGTACGCGGCCGCTCGAG - GFP Tag - GTTTAA



[View online »](#)

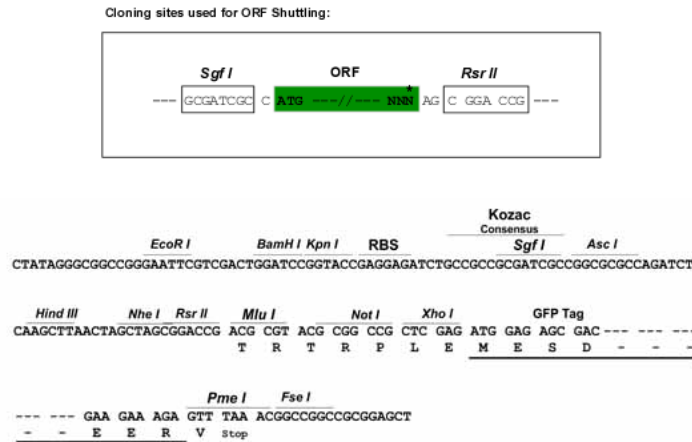
Protein Sequence: >RG217495 representing NM_139283
Red=Cloning site Green=Tags(s)

MFSVL SYGRLVARAVLGGLSQTDPRAGGGGGDYGLVTAGCGFGKDFRKGLLKKGACYGDDACFVARHRS
 ADVLGVADGVGGWRDYGVDPSQFSGTLMRTCERLVKEGRFVPSNP I GIL TTSYCELLQNKVPLLGSSTAC
 IVVLDRTSHRLHTANLGD SGFLVVRGGEVVHRSDEQQHYFNTPFQLSIAPPEAGVVLSDSPDAADSTSF
 DVQLGDIILTATDGLFDNMPDYMILQELKCLKNSNYESIQQTARSIAEQAHELAYDPNYMSPFAQFACDN
 GLNVRGGKPDITVLLSIVA EYTD

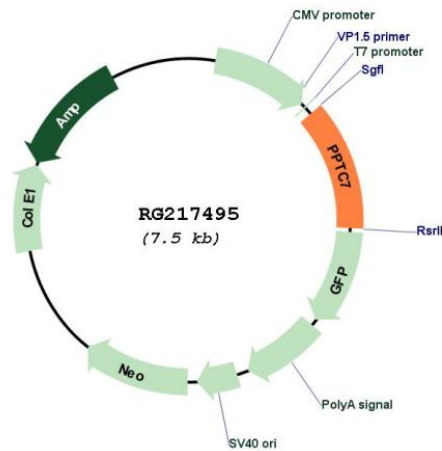
SGPTRRRLE - GFP Tag - V

Restriction Sites: SgfI-RsrII

Cloning Scheme:



Plasmid Map:



ACCN: NM_139283

ORF Size: 912 bp

OTI Disclaimer:	The molecular sequence of this clone aligns with the gene accession number as a point of reference only. However, individual transcript sequences of the same gene can differ through naturally occurring variations (e.g. polymorphisms), each with its own valid existence. This clone is substantially in agreement with the reference, but a complete review of all prevailing variants is recommended prior to use. More info
OTI Annotation:	This clone was engineered to express the complete ORF with an expression tag. Expression varies depending on the nature of the gene.
Components:	The ORF clone is ion-exchange column purified and shipped in a 2D barcoded Matrix tube containing 10ug of transfection-ready, dried plasmid DNA (reconstitute with 100 ul of water).
Reconstitution Method:	<ol style="list-style-type: none"> 1. Centrifuge at 5,000xg for 5min. 2. Carefully open the tube and add 100ul of sterile water to dissolve the DNA. 3. Close the tube and incubate for 10 minutes at room temperature. 4. Briefly vortex the tube and then do a quick spin (less than 5000xg) to concentrate the liquid at the bottom. 5. Store the suspended plasmid at -20°C. The DNA is stable for at least one year from date of shipping when stored at -20°C.
RefSeq:	NM_139283.2
RefSeq Size:	3748 bp
RefSeq ORF:	915 bp
Locus ID:	160760
UniProt ID:	Q8NI37
Cytogenetics:	12q24.11
Protein Families:	Druggable Genome, Phosphatase
Gene Summary:	Protein phosphatase which positively regulates biosynthesis of the ubiquinone, coenzyme Q (PubMed:30267671). Dephosphorylates the ubiquinone biosynthesis protein COQ7 which is likely to lead to its activation (PubMed:30267671).[UniProtKB/Swiss-Prot Function]