

Product datasheet for **RG217446**

Reelin (RELN) (NM_173054) Human Tagged ORF Clone

Product data:

Product Type:	Expression Plasmids
Product Name:	Reelin (RELN) (NM_173054) Human Tagged ORF Clone
Tag:	TurboGFP
Symbol:	RELN
Synonyms:	ETL7; LIS2; PRO1598; RL
Mammalian Cell Selection:	Neomycin
Vector:	pCMV6-AC-GFP (PS100010)
E. coli Selection:	Ampicillin (100 ug/mL)
ORF Nucleotide Sequence:	>RG217446 representing NM_173054 Red=Cloning site Blue=ORF Green=Tags(s)

TTTTGTAATACGACTCACTATAGGGCGGCCGGAATTCGTCGACTGGATCCGGTACCGAGGAGATCTGCC
GCC**CGATCGCC**

ATGGAGCGCAGTGGCTGGGCCCGGCAGACTTTCTCCTAGCGCTGTTGCTGGGGCGACGCTGAGGGCGC
GCGCGCGGCTGGCTATTACCCCGCTTTTCGCCCTTCTTTTTCTGTGCACCCACCACGGGGAGCTGGA
AGGGGATGGGAGCAGGGCGAGGTGCTCATTTCCCTGCATATTGGGGCAACCCACCTACTACGTTCCG
GGACAAGAATACCATGTGACAATTTCAACAAGCACCTTTTTGACGGCTTGTGGTACAGGACTATACA
CATCTACAAGTGTTCAGGCATCACAGAGCATTGGAGTTCAGTCTTTTCGGATTTGGGATCATGTCTGA
CCACCAGTTTGGTAACCAGTTTATGTGCAGTGTGGTAGCCTCTCACGTGAGTCACCTGCCACAACCAAC
CTCAGTTTCATCTGGATTGCTCCACCTGCGGGCACAGGCTGTGTGAATTTATGGCTACAGCAACACACC
GGGGCCAGGTTATTTCAAAGATGCTTTAGCCAGCAGTTGTGTGAACAAGGAGCTCCAACAGATGTCAC
TGTGCACCCACATCTAGCTGAAATACATAGTGACAGCATTATCCTGAGAGATGACTTTGACTCCTACCAC
CAACTGCAATTAATCAAATATATGGGTTGAATGTAACAACGTGAGACTGGAGAACAGTGTGGCGGA
TTATGCATGGCAATGCCGTCACCTTCTGTGAACCATATGGCCACGAGAAGTATTACCACAGGCCTTAA
TACAACAACAGCTTCTGTCTCCAATTTCCATTGGGTGAGTTCATGTGCTTTAGTTATTCAGACCCC
AGCATCATCGTGTATATGCCAAGAATAACTCTGCGGACTGGATTACAGCTAGAGAAAATTAGAGCCCTT
CCAATGTCAGCACAATCATCCATATCCTCTACCTTCTGAGGACGCCAAAGGGGAGAATGTCCAATTTCA
GTGGAAGCAGGAAAATCTTCGTGTAGGTGAAGTGTATGAAGCCTGCTGGGCCCTAGATAACATCTTGATC
ATCAATTCAGCTCACAGACAAGTCGTTTTAGAAGATAGTCTGACCCAGTGGACACAGGCAACTGGCTTT
TCTTCCCAGGAGCTACAGTTAAGCATAGCTGTCAGTCAGATGGGAACTCCATTTATTTCCATGGAATGA
AGGCAGCGAGTTCAATTTGCCACCACCAGGGATGTAGATCTTTCCACAGAAGATATTCAAGAGCAATGG
TCAGAAGAATTTGAGAGCCAGCCTACAGGATGGGATGTCTTGGGAGCTGTCATTGGTACAGAATGTGGAA
CGATAGAATCAGGCTTATCAATGGTCTTCTCAAAGATGGAGAGAGGAAATATGCACTCCATCCATGGA
CACTACCGTTATGGGAACCTGAGGTTTTACTTTGTGATGGGAGGAATTTGTGACCTGGAAATTTCTCAT



[View online »](#)

GAAAATGACATAATCCTGTATGCAAAAATTGAAGGAAGAAAAGAGCATATAACACTGGATACCCTTTCT
 ATTCCTCATATAAGGTTCCGTCTTTGGTTTCTGTGGTCATCAATCCTGAACCTCAGACTCCTGCTACCAA
 ATTTTGTCTCAGGCAAAAAGAACCATCAAGGACATAATAGGAATGTCTGGGCTGTAGACTTTTTCCATGTC
 TTGCCTGTTCTCCCTTCTACAATGTCTCACATGATACAGTTTTCCATCAATCTGGGATGTGGAACGCATC
 AGCCTGTAACAGTGTGAGCTTGGAAATTTCTACCAACCATGGGCGCTCCTGGTCCCTCCTTCACACTGA
 ATGCTTACCTGAGATCTGTGCTGGACCCACCTCCCCACAGCACTGTCTACTCCTGAAAACTACAGT
 GGTGGAACCGAATAACAATCCCCTTCCCTAACGCAGCACTAACCCGGAACACCAGGATTCGCTGGAGAC
 AAACAGGACCAATCCTTGAAACATGTGGCAATTGATAATGTTTATATTGGCCCGTCATGTCTCAAATT
 CTGTTCTGGCAGAGGACAGTGCCTAGACATGGTTGCAAGTGTGACCCTGGATTTTCTGGCCAGCTTGT
 GAGATGGCATCCCAGACATTCCCAATGTTTATTTCTGAAAGCTTTGGCAGTTCAGGCTCTCCTCTTACC
 ATAACCTTTACTCTATCCGTGGTGTGAAGTCACTTTGGTTGTGGTGTCTTGGCCAGTGGTAAGGCCCT
 GGTTTTCAACAAAGATGGGCGGCTCAGCTAATTACATCTTCTTGGACAGCTCACAATCCAGGTTTCTC
 CAGTTCACACTGAGACTGGGAGCAATCTGTTCTGAGCAGTGCAGAGCCCTGATCAGCCTGGTGAAG
 GAGTTTTGTTGCATTATCTTATGATAATGGGATAACTTGGAACTCCTGGAGCATTATTCATATCTCAG
 CTATCATGAGCCAGAATAATCTCCGTAGAACTACCAGGTGATGCAAAGCAGTTTGGAAATCAGTTCAGA
 TGGTGGCAACCGTATCATTCTTCCAGAGAGAAGATGTATGGGCTATTGATGAGATTATCATGACATCTG
 TGCTTTTCAACAGCATTAGTCTTGACTTTACCAATCTTGTGGAGGTCACTCAGTCTCTGGGATTCTACCT
 TGGAAATGTTAGCCATACTGTGGCCACGACTGGACCCTTTGTTTACAGGAGATTCTAAACTTGCCTCA
 AGTATGCGCTATGTGAAACACAATCAATGCAGATAGGAGCATCTATATGATTCAGTTCAGTTTGGTGA
 TGGGATGTGGCCAGAAAACACCCACACATGGACAACCAGGTGAAGCTGGAGTACTCAACCAACCACGG
 CCTTACCTGGCACCTCGTCCAAGAAGATGCCTTCCAAGTATGCCAAGTGTGAGGAAATTCATCAGCA
 AGTATTTACCATGCCAGTGAATTTACACAGTGGAGGAGTCAAGTGTCTTCTTCCAGAAAACCTGGT
 CCAGTCACTACCCGTTTCCGCTGGAGCCAGAGCTATTACACAGCTCAAGACGAGTGGGCTTGGACAGCAT
 TTACATTTGGGACAGCAGTGCCTCAACATGTGCAAGTGGGCATGGCTCATGCGATCATGCGATATGCAAGTGT
 GACCAGGGGTACCAAGGCACTGAATGCCACCCAGAAGCTGCCCTTCCGTCCACAATTATGTCAGATTTTG
 AGAACCAGAATGGCTGGGAGTCTGACTGGCAAGAAGTATTGGGGGAGAAATGTAAAACCAAGAACAAGG
 GTGTGGTGTCTCTTCTGGATCATCTCTGTACTTCAGCAAGGCTGGGAAAAGACAGCTGGTGAATGG
 GACCTGGATACTTCTGGGTGGACTTTGTCCAGTCTACATCCAGATAGGCGGAGAGTGTCTCATGCA
 ACAAGCCTGACAGCAGAGAGGAGGGCGTCTCCTTCAGTACAGCAACAATGGGGCATCCAGTGGCACCT
 GCTAGCAGAGATGACTTTTCCAGACTTCAGCAACCCAGATTTGTCTATCTGGAGCTTCCAGCTGCTGCC
 AAGACCCCTTGCACCAGTTCCGCTGGTGGCAGCCGTGTTCTCAGGGGAGGACTATGACCAGTGGCGAG
 TCGATGACATCATATTCTGTCCGAGAAGCAGAAGCAGATCATCCAGTTATCAATCCAACCTTACCTCA
 GAACCTTTATGAGAAGCCAGCTTTTATTACCTATGAATCAGATGAGTGTGTGGTTGATGTTGGCTAAT
 GAAGGAATGGTAAAAATGAAACCTTCTGTGCTGCCACACCATCAGCAATGATATTTGAAAAATCAGATG
 GAGATCGATTTGCAGTAACTCGAGATTTGACCCTGAAACCTGGATATGTGCTACAGTTCAAGCTAAACAT
 AGGTTGTGCCAATCAATTCAGCAGTACTGCTCCAGTCTTCTTCCAGTACTCTCATGATGCTGGTATGTCC
 TGGTTTCTGGTGAAGAAGGCTGTTACCCGGCTTCTGCAGGCAAGGATGCGAAGGAACTCCAGAGAAC
 TAAGTGAAGCCACCATGTATCACACAGGGGACTTTGAAGAATGGACAAGAATCACCATTGTTATTTCAAG
 GTCTTTGCATCCAGCAAGACCAGATTCGATGGATCCAGGAGAGCAGCTCACAGAAAAACGTGCCCTCCA
 TTTGGTTTAGATGGAGTGTACATATCCGAGCCTTGTCCAGTACTGCAGTGGCCATGGGACTGCATTT
 CAGGAGTGTGTTCTGTGACCTGGGATATACTGCTGCACAAGGAACCTGTGTGTCAAATGTCCCAATCA
 CAATGAGATGTTTCGATAGGTTTGGAGGGAAGCTCAGCCCTCTGTGGTACAAGATAACAGGTGCCAGGTT
 GGAACCTGGCTGTGGAACACTTAACGATGGCAAATCTCTACTTCAATGGCCCTGGGAAAAGGGAAGCCC
 GGACGGTCCCTCTGGACACCAGGAATATCAGACTTGTTCATTTTATATACAAATTTGGAAGCAAACTTC
 AGGCATTACCTGCATCAAACCAAGAAGTGAAGTGAAGGGCTTATTGTTTCAATTTCAAATGACAATGGG
 ATACTCTGGCATTGCTTCGAGAGTTGGACTTCATGCTCTTCTGGAACACAGATCATTCCATTGACC
 TGCCACAGGACGGAAGACACCTGCAACGGCATTTCGATGGTGGCAACCGCAACATGGGAAGCATTGAGC
 CCAGTGGGCTTTGGATGATGTTCTTATAGGAATGAATGACAGCTCTCAAACCTGGATTTCAAGACAATTT
 GATGGCTCTATAGATTTGCAAGCCAACCTGGTATCGAATCCAAGGAGGTCAAGTTGATATTGACTGTCTCT
 CTATGGATACTGCTCTGATATTTCACTGAAAACATAGGAAAACCTCGTTATGCTGAGACCTGGGATTTTCA
 TGTGTCAGCATCTACCTTTTGCAGTTTGAATGAGCATGGGCTGTAGCAAGCCCTTCCAGCACTCCAC
 AGTGTACAGCTCCAGTATTCTCTGAACAATGGCAAGGACTGGCATCTTGTACCAGGAGTGTGTTCTCT

CAACCATTGGCTGTCTGCATTACACGGAAAGTTCAATTTACACCTCGGAAAGATTCCAGAATTGGAAGCG
 GATCACTGTCTACCTTCCACTCTCCACCATTTCTCCAGGACCCGGTTCAGATGGATTGAGGCCAACTAC
 ACTGTGGGGGCTGATTCTGGGCGATTGATAATGTTGACTGGCCTCAGGGTGCCCTGGATGTGCTCAG
 GACGAGGGATTTGTGATGCTGGACGCTGTGTGTGACCAGGGGCTTTGGTGGACCCTATTGTGTTCTGT
 TGTTCCCTGCCCCTCGATTCTTAAAGACGATTTCAATGGGAATTTACATCCTGACCTTTGGCCTGAAGTG
 TATGGTGCAGAGAGGGGAATCTGAATGGTGAACCATCAAATCTGGAACATCTCAATTTTTAAGGGG
 AAGGACTAAGGATGCTTATTTCAAGAGATCTAGATTGTACAAATACAATGTATGTCAGCTTTTCCATTAG
 ATTTATAGCAAAAAGTACCCAGAGAGATCTCACTCTATTCTGTTACAATTCTCCATCAGTGGAGGAATC
 ACTTGGCACCTGATGGATGAATTTACTTCTCAAACAACGAATATACTTTTCAATGTTCCCTTGC
 CATACTGCCCCAAACCAATGCTACAAGATTGAGACTCTGGCAACCTTATAATAACGGTAAGAAAGAAGA
 AATCTGGATTGTTGATGACTTCAATATCGATGGAAATAATGTAACAACCCCTGTGATGCTTGGATACA
 TTTGATTTGGGCCAGAGAAGACAATTGGTTTTCTATCCTGGTGGTAACATCGGTCTTATTGTCCAT
 ATCTTCAAAGGGGGCACCTGAAGAAGATTGAGCTATGGTGTGTTTCAAATGAAGTTGGTGGACATTC
 CATTACCACCCGTGACCTAAATGTGAATGAGAACCACATACATAATTTGAGATCAACGTTGGCTGTTCG
 ACTGATAGCTCATCCGGATCCAGTGAGACTGGAATTTCAAGGGACTTCGGGGCGACCTGGCACCTTC
 TGCTGCCCTCTGCTACCACAGCAGCAGCCACGTGAGCTTTTATGCTCCACCGACACCACCCAGCAG
 CACCTACTACGCAGGAACCATGCAGGGCTGGAGGAGGGAGGTCTGTCACCTTTGGGAAGCTGCACCTTTG
 GGATCTGTCCGTTTCCAGATGGTACCAGGGATTTACCCTGCCGGCTCTCAGCCAGTGACATGGGCCATTG
 ATAATGTCTACATCGGTCCCCAGTGTGAGGAGATGTGTAATGGACAGGGGAGCTGTATCAATGGAACCA
 ATGTATATGTGACCCTGGCTACTCAGGTCCAACCTGTAATAAAGCACCACCAAACTCTGATTTTCTCAA
 GATGATTTGGAAGGTGAGCTAGAATCTGATAGATTCTTATTAATGAGTGGTGGAAACCATCTCGAAAGT
 GTGGAACTCTTCTAGTGGAAACAACCTCTTTTCAATGAAGATGGCTTGCATGTTGATGACACGAGA
 CCTGATTTATCACATGCTAGATTTGTGCAGTTCTTATGAGACTGGGATGGTAAAGCGGTTCTCTGAC
 CCCAGGAGTCAACCCGTGCTCTACAGTATTCTCTCAACGGTGGCCTCTGTTGGAGTCTTCTTCAGGAGT
 TCTTTTTCAGCAATTCAGCAATGTGGGACGTACATTGCCCTGGAGATACCCCTTGAAGCCCGTCTGG
 TTCTACTCGCCTTCGCTGGTGGCAACCGTCTGAGAATGGGCACCTCTACAGCCCTGGGTATCGATCAG
 ATTCTTATTGGAGGAAATATTTCTGGTAATACGGTCTTGGAAAGATGATTTACAACCCCTGATAGTGG
 AATGGCTGCTTCAACCCAGGAGGCACCAAGATGCCCGTGTGTGGCTCTACTGGTATGCCCTGGTCTTCA
 TGAAGGAGCCAGCACCCTTACGTGGTGCAGACAGACGTGCCGTGAATGAGGATTCCTTCTACAGATA
 GACTTCGCTGCCTCTGCTCAGTACAGACTCTGTTATGCGATTGAATGGAATACTCAGTAGATCTTG
 GATTGTATGGCACCATTGGTAAGGGACTGTCTGCCTACCAATGTGGAATGCAGTGCATCATCTGCA
 ACGGATCCTGGTGTGAGACACTTCAACAAGTGGACTAGAATCACTCTGCCTCTCCCTCTTATACCAGG
 TCCCAAGCCACTCGTTTCCGTTGGCATCAACCAGCTCCTTTTGAAGCAGCAGACATGGCAATAGATA
 ATGTCTATATCGGGGATGGCTGCATAGACATGTGCAGTGGCCATGGGAGATGCATCCAGGGAAACTGCGT
 CTGTGATGAACAGTGGGGTGGCCTGACTGTGATGACCCCGAGACCTCTCTTCCAACCCAACTCAAAGAC
 AACTTCAATCGAGCTCCATCCAGTCAAGACTGGCTGACTGTGAACGGAGGGAAATGAGTACAGTGTGTG
 GAGCCGTGGCGTCGGGAATGGCTCTCCATTTCAAGTGGGGTGTAGTGCATTTAGTCACTGTGGATCT
 AAACCTCACTAATGCTGAGTTCATCAATTTTACTTCAATGATGGTGCCTGATTACACCAAAACAACCGT
 AACCAAGGTGTTCTCTTGGAAATTTCTGTCAATGGAGGCATTACCTGGAACCTGCTCATGGAGATTTTCT
 ATGACCAGTACAGTAAGCCCGGTTTGTGAATATCCTTCTCCCTCTGATGCTAAAGAGATTGCCACTCG
 CTTCCGCTGGTGGCAGCAAGACATGACGGCCTGGATCAGAACGACTGGGCCATTGACAATGTCCTCATC
 TCAGGCTCTGCTGACCAAGGACCGTTATGCTGGACACCTTACAGCAGCGCCCGTACCCAGCATGAGC
 GCTCCCTGCAGATGCCGGCCTGTGGGAGGATCGCCTTTGACATGTTTATGGAAGACAAAACCTCAGT
 GAATGAGCACTGGCTATCCATGATGATTGTACAGTAGAAAGATTCTGTGACTCCCTGATGGTGTGATG
 CTCTGTGGCAGTCATGATGGACGGGAGGTGTATGCAGTACCCATGACCTGACTCCCACTGAAGGCTGGA
 TTATGCAATTCAGATCTCAGTTGGATGAAGGTGTCTGAAAAAATGCCCAGAATCAAATTCATGTGCA
 GTATTCTACTGACTTCGGTGTGAGTTGGAATATCTGGTCCCTCAGTGCCTGCTGACCCAAAATGC
 TCTGGAAGTGTCTCAGCCATCTGTATTCTTTCCAACCTAAAGGGTGGAAAAGGATCACCTACCCACTTC
 CTGAAAGCTTAGTGGAAATCCGGTAAGGTTTAGGTTCTATCAGAAGTACTCAGACATGCAGTGGCAAT
 CGATAATTTCTACCTGGGCCCTGGATGCTTGGACAACCTGCAGGGGCCATGGAGATTGCTTAAAGGAAACAG
 TGCATCTGTGATCCGGGATACTCAGGGCCAAACTGCTACTTGACCCACACTCTGAAGACTTCTCTGAAGG
 AACGCTTTGACAGTGAAGAAATCAAACCTGACTTATGGATGTCCTTAGAAGGTGGAAGTACTTGCCTGA

GTGTGGAATTCTTGCCGAGGACTGCACTCTATTTGGGGGATCCACTGTGAGACAAGCGGTTACACAA
 GATTTGGATCTTCGAGGTGCAAAGTTCTGCAATACTGGGGGCGCATCGGTAGTGAGAACAACATGACCT
 CTTGCCATCGTCCCATCTGCCGGAAGGAAGGCGTGTGTTGGACTACTCTACCGATGGAGGAATTACCTG
 GACTTTGCTCCATGAGATGGATTACCAGAAATACATTTCTGTTAGACACGACTACATACTTCTTCTGAA
 GATGCCCTACCAACACAACCTCGACTTCGCTGGTGGCAGCCTTTTGTGATCAGCAATGGAATTGTGGTCT
 CTGGGGTGGAGCGTGTCTCAGTGGGCACTGGACAACATTTTATTGGTGGAGCAGAATCAATCCCAGCCA
 ATTGGTGGACACTTTTGTGATGATGAAGCACTTCCCATGAAGAAAACCTGGAGTTTTTACCCTAATGCTGTA
 AGGACAGCAGGATTTTGTGGCAATCCATCCTTTACCTCTATTGGCCAAATAAAAAGAAGGACAAGACTC
 ACAATGCTCTCTCTCCCGAGAACTCATTATACAGCCAGGATACATGATGCAATTTAAAATTGTGGTGGG
 TTGTGAAGCCACTTCTTGTGGTACCTTCCGTAATGCTGGAATACACTAAGGATGCAAGATCGGAT
 TCCTGGCAGCTCGTACAGACCCAGTGCCTTCTTCTCTTCTAACAGCATTGGCTGCTCCCTTTCCAGT
 TCCATGAAGCCACCATCTACAACCTGTCAACAGCTCAAGCTGGAAAAGAATCACCATCCAGCTGCCTGA
 CCATGTCTCTCTAGTGAACACAGTCCGCTGGATCCAGAAGGGAGAAGAACTGAGAAGCAAAGCTGG
 GCAATTGACCACGTGTACATTGGAGAGGCTTGCCCAAGCTCTGCAGCGGCACGGATACTGCACGACCG
 GTGCCATCTGCATCTGCGACGAGAGCTTCCAAGGTGATGACTGCTCTGTTTTTTCAGTCACGACCTTCCAG
 TTATATTAAGATAATTTTGTAGTCCGCAAGAGTCAACGAGGCAAACCTGGGAGACCATTCAAGGTGGAGTC
 ATAGGAAGTGGCTGTGGGACGCTGGCCCCCTACGCCCATGGAGACTCACTGTACTTTAATGGCTGTGAGA
 TCAGGCAAGCAGCTACCAAGCCTCTGGATCTCACTCGAGCAAGCAAAATCATGTTTGTGTTTGCAAAATGG
 GAGCATGTGCGAGACGGACAGCTGCAACAGTGACCTGAGTGGCCCCACGCTGTGGACAAGGCAAGTGTG
 CTGCAATACAGCGTCAACAACGGGATCACCTGGCATGTATCGCCAGCACCAGCCAAAGGACTTACAC
 AAGCTCAGAGAGTGTCTTACAATGTCCCCTGGAGGCACGGATGAAAGGAGTCTTACTGCGCTGGTGGCA
 ACCACGCCACAATGGAACAGGTGATGATCAATGGGCTTGGACCATGTGGAGTCTCTCACTCGCAAA
 CAAAATTACATGATGAATTTTTCACGACAACATGGGCTCAGACATTTCTACAACAGAAGCAAGGTCAC
 TTAGGCATACCCA

ACGCGTACGCGGCCGCTCGAG – GFP Tag – GTTTAA

Protein Sequence:

>RG217446 representing NM_173054
 Red=Cloning site Green=Tags(s)

MERSGWARQTFLLALLL GATLRARAAGYYPFSPFFFLCTHHGELEGDGEQGEVLI SLHIAGNPTYYPV
 GQEHVITISTSTFFDGLLV TGLYTSTVSQASQSIGSSAFGFIMSDHQFNQFMCSVAVSHVSHLPTTN
 LSFIIWIAPPAGTGCNVFMATATHRQVIFKDALAQQLEQGAPTDVTVHPLAEIHSDSIILRDDFD SYH
 QLQLNPNIWVECNNCETGEQCGAIMHGNVTFCEPYGPRELIT TGLNTTASVLQFSIGSGSCRFSYSDP
 SIIIVLYAKNNSADWIQLEKIRAPSNVSTIIHIL YLPEDAKGENVQFQWKQENLRVGEVYEA WALDNILI
 INSAHRQVVLEDSLDPVDTGNWLFPPGATVKHSCQSDGNSIYFHGNEGSEFN FATTRDVLSTEDIQE QW
 SEEFESQPTGWDV L GAVIGTECGTIESGLSMVFLK DGERKLC T P SMDTTGYNLRFYFVMGGICDPGN SH
 ENDIILYAKIEGRKEHITLDTLSYSSYKVP SLVSVINPELQTPATKFLRQKNHQHNRNVWAVDF FHV
 LPVLPSTMSHMIQFSINLGC GTHQPGNSVLEFSTNHGRSWSLLHTECLPEICAGPHLPHSTVYSSENYS
 GWNRITIPLPNAALTRNTRIRWRQTGPILGNMWAIDNVYIGPSCLKFC SGRGQCTRHGCKCDPGFSGPAC
 EMASQTFPMFISESFGSSRLSSYHNFYSIRGAEV SFGCVLASGKALVFNKDGRRLIT SFLDSSQS RFL
 QFTLRLGSKSVLSTCRAPDQPGEGVLLHYSYDNGITWKLLEHYSYLSYHEPRIISVELPGDAKQFGIQFR
 WWQPYHSSQREDVWAIDEIIMTSVLFNSISLDFTNLVEVTQSLGFYLG NVQPYCGHDWTLCTFGD SKLAS
 SMRYVETQSMQIGASYMIQFSLVMGCGQKYPHMDNQVKLEYSTNHGLTWHLVQEECLPSMPSCQEF TSA
 SIYHASEFTQWRRVIVLLPQKTWSSATRF RWSQSYTTAQDEWALDSIYIGQCPNMCSGHGSCDHGICRC
 DQGYQGT ECHPEAALPSTIMSDFENQNGWESDWQEVI GGEIVKPEQCGV I SSGSSLYFSKAGKRQLVSW
 DLDTSWVDFVQFYIQIGGESASCNKPD SREEGVLLQYSNNGIQWHLLAEMYFSDFSKPRFVYLEL PAAA
 KTPCTRFRRWQPVFSGEDYDQWAVDDIIILSEKQKIIPVINPTLPQNFYEKPAFDYPMNQMSVWMLAN
 EGMVKNETFCAATPSAMIFGKSDGRFAVTRDLTKPGYVLQFKLNIGCANQFSSTAPVLLQYSHDAGMS
 WFLVKEGCYPASAGKCEGNSRELSEPTMYHTGD FEEWTRITIVIPRSLASSKTRFRWIQESSSQKNVPP
 FGLDGVYI SEPCPSYCSGHGDCISGVCFCDLGYTAAQGT CVSNVPHNEMFDRFEGKL SPLWYKITGAQV
 GTGCGTLNDGKSLYFNPGKREARTVPLDTRNIRL VQFYIQIGSKTSGITCIKPRTRNEGLIVQYSNDNG
 ILWHLLRELD FMSFLEPQIISIDL PQDAKTPATAFRWWQPQHGHSAQWALDDVLIGMNDSSQTGFQDKF

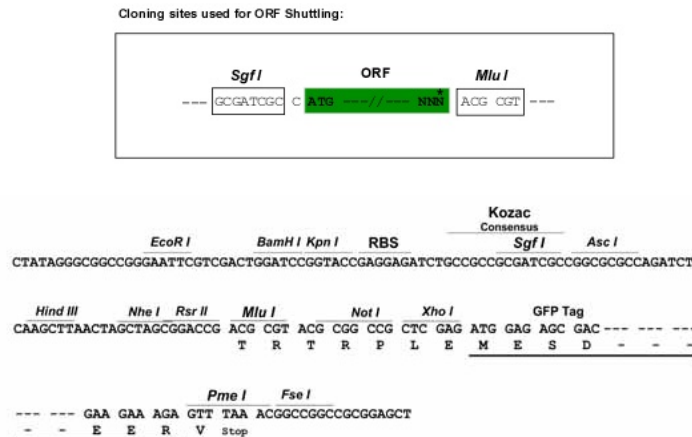
DGSIDLQANWYRIQGGQVDIDCLSMDTALIFTENIGKPRYAETWDFHVSASTFLQFEMSMGCSKPFNSH
 SVLQQLYSLNNGKDWHLVTEECVPTIGCLHYTESSIIYTSERFQNKIRITVYLPLSTISPRTRFRWIQANY
 TVGADSWAIDNVVLAASGCPWMCSSGRGICDAGRVCDFRGGPYCVVPLPSILKDDFNGLHPDLWPEV
 YGAERGNLNGETIKSGTSLIFKGEGLRMLISRDLDCNTMYVQFSLRFIAKSTPERSHSILLQFSISGGI
 TWHLMDEFYFPQTTNILFINVPLPYTAQTNATRFRLWQPYNNGKKEEIIWVDDFIIDGNVNNPVMLLDT
 FDFGPREDNWFYYPGGNIGLYCPYSSKGAPEEDSAMVVSNEVEHSITTRDLNVNNTIIQFEINVGCS
 TDSSADPVRLEFSRDFGATWHLLLPLCYHSSSHVSSLCTEHHPSSTYYAGTMQGWRRREVVFHGLHLCL
 GSVRFWYQGFYPAGSQPVTWADNVYIGPQCEEMCNGQGSCINGTKICDPGYSGPTCKISTKNPDFLK
 DDFEGQLESDRFLLMMSGGKPSRKCGLSSGNLFFNEDGLRMLMTRDLDLSHARFVQFFMRLGCGKGVDP
 PRSQPVLLQYSLNGLSWSLLQEFLLSNSSNVGRYIALEIPLKARSGSTRLRWWQPSENGHFYSPWVIDQ
 ILIGGNI SGNTVLEDDFTTLDNRKLLHPGGTKMPVCGSTGDALVIEKASTRYVSTDAVNEDSFLQI
 DFAASCVTDSCYAIELEYSVDLGLSWHPLVRDCLPTNVECSRYHLQRILVSDTFNKWTRITLPLPPYTR
 SQATRFWRWHPAPFDKQQTWAIDNVYIGDGCIDMCSGHGRCIQGNCVCEQWGLYCDDPETS LPTQLKD
 NFNRAPSSQNWLTVNGGKLVTCGAVASGMALHFGGCSRLLVTVDLNL TNAEFIQFYFMYGCLITPNNR
 NQGVLL EYSVNGGITWLLMEIFYDQYKPGFVNILLPPDAKEIATRFRWWQPRHDGLDQNDWAIDNVL I
 SGSADQRTVMLDTFSSAPVPQHERSPADAGPVGRIAFDMFMEDKTSVNEHWL FHDCTVERFCDSPDGVM
 LCGSHDGREVYAVTHDLTPTEGIMQFKISVGCKVSEKIAQNQIHVQYSTDFGVSWNYLVPQCLPADPKC
 SGSVSQPSVFFPTKGWKRITYPLPELVGNPVRFRFYQKYSMDQWVIDNFYLGPGCLDNCRGGHGDCLREQ
 CICDPGYSGPNCYL THTLKTFLKERFDSEEIKPDLWMSLEGGSTCTECGILAEDTALYFGGSTVVRQAVTQ
 DLDLRGAKFLQYWGRI GSENMTSCHRPICRKEGVLLDYSTDGGITWTLLEMDYQKYISVRHDYILLPE
 DALTNTTRLRWWQPFVISNGI VVSGVERAQWALDNILIGGAEINPSQLVDTFDEGTSHEENWSFYRNAV
 RTAGFCGNPSFHL YWPNKKKDKTHNALSSRELI IQPGYMMQFKIIVGCEATSCGDLHSVMLEYTKDARSD
 SWQLVQTQCLPSSNSIGCSPFQFHEAT IYNSVNSSWKRITIQLPDHVSSATQFRWIKGEETEKGQSW
 AIDHVIYIGEACPKLCSGHGYCTTGAICICDESFQGDCCSVF SHDLPSYIKDNFESARVTEANWETIQGGV
 IGS GCGQLAPYAHGDSL YFNGCQIRQAATKPLDLTRASKIMFVLQIGSMSQTDSCNSDL SGPHAVDKAVL
 LQYSVNNGITWHVIAQHQPDKFTQAQRVSYNVPLEARMKGVLLRWWQPRHNGTGHDQWALDHVEVVLTRK
 QNYMMNFSRQHGLRHFYNNRRRSLRRYP

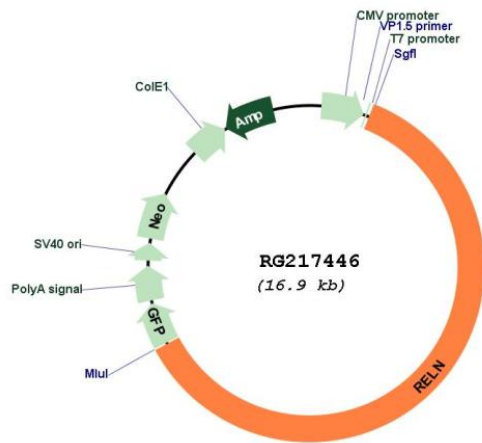
TRTRPLE - GFP Tag - V

Restriction Sites:

SgfI-MluI

Cloning Scheme:



Plasmid Map:


ACCN: NM_173054

ORF Size: 10374 bp

OTI Disclaimer: Due to the inherent nature of this plasmid, standard methods to replicate additional amounts of DNA in *E. coli* are highly likely to result in mutations and/or rearrangements. Therefore, OriGene does not guarantee the capability to replicate this plasmid DNA. Additional amounts of DNA can be purchased from OriGene with batch-specific, full-sequence verification at a reduced cost. Please contact our customer care team at custsupport@origene.com or by calling 301.340.3188 option 3 for pricing and delivery.

The molecular sequence of this clone aligns with the gene accession number as a point of reference only. However, individual transcript sequences of the same gene can differ through naturally occurring variations (e.g. polymorphisms), each with its own valid existence. This clone is substantially in agreement with the reference, but a complete review of all prevailing variants is recommended prior to use. [More info](#)

OTI Annotation: This clone was engineered to express the complete ORF with an expression tag. Expression varies depending on the nature of the gene.

Components: The ORF clone is ion-exchange column purified and shipped in a 2D barcoded Matrix tube containing 10ug of transfection-ready, dried plasmid DNA (reconstitute with 100 ul of water).

Reconstitution Method:	<ol style="list-style-type: none">1. Centrifuge at 5,000xg for 5min.2. Carefully open the tube and add 100ul of sterile water to dissolve the DNA.3. Close the tube and incubate for 10 minutes at room temperature.4. Briefly vortex the tube and then do a quick spin (less than 5000xg) to concentrate the liquid at the bottom.5. Store the suspended plasmid at -20°C. The DNA is stable for at least one year from date of shipping when stored at -20°C.
RefSeq:	NM_173054.1 , NP_774959.1
RefSeq Size:	11558 bp
RefSeq ORF:	10377 bp
Locus ID:	5649
UniProt ID:	P78509
Cytogenetics:	7q22.1
Protein Families:	Druggable Genome
Protein Pathways:	ECM-receptor interaction, Focal adhesion
Gene Summary:	<p>This gene encodes a large secreted extracellular matrix protein thought to control cell-cell interactions critical for cell positioning and neuronal migration during brain development. This protein may be involved in schizophrenia, autism, bipolar disorder, major depression and in migration defects associated with temporal lobe epilepsy. Mutations of this gene are associated with autosomal recessive lissencephaly with cerebellar hypoplasia. Two transcript variants encoding distinct isoforms have been identified for this gene. Other transcript variants have been described but their full length nature has not been determined. [provided by RefSeq, Jul 2008]</p>