

Product datasheet for **RG217436**

Telomerase reverse transcriptase (TERT) (NM_198253) Human Tagged ORF Clone

Product data:

Product Type:	Expression Plasmids
Product Name:	Telomerase reverse transcriptase (TERT) (NM_198253) Human Tagged ORF Clone
Tag:	TurboGFP
Symbol:	Telomerase reverse transcriptase
Synonyms:	CMM9; DKCA2; DKCB4; EST2; hEST2; hTRT; PFBMFT1; TCS1; TP2; TRT
Mammalian Cell Selection:	Neomycin
Vector:	pCMV6-AC-GFP (PS100010)
E. coli Selection:	Ampicillin (100 ug/mL)
ORF Nucleotide Sequence:	>RG217436 representing NM_198253 Red=Cloning site Blue=ORF Green=Tags(s)

TTTTGTAATACGACTCACTATAGGGCGGCCGGAATTCGTCGACTGGATCCGGTACCGAGGAGATCTGCC
GCC**CGATCGCC**

ATGCCGCGCTCCCGCTGCCGAGCCGTGCGCTCCCTGCTGCGCAGCCACTACCGCAGGTGCTGCCGC
TGGCCACGTTCTGTCGGCGCCTGGGGCCCCAGGGCTGGCGGTGGTGCAGCGGGGACCCGGCGCTTT
CCGCGCGTGGTGGCCAGTGCCTGGTGTGCGTGCCCTGGGACGCACGGCCGCCCGCCCGCCCTCC
TTCGCCAGGTGCTCTGCTGAAGGAGCTGGTGGCCGAGTGTGCAGAGGCTGTGCGAGCGGGCGGA
AGAACGTGCTGGCCTTCGGCTTCGCGTCTGGACGGGGCCGAGGGGGCCCCCGAGGCCTTACCAC
CAGCGTGCAGCTACCTGCCAACACGGTGACCGACGCACTGCGGGGAGCGGGGCGTGGGGGCTGCTG
CTGCGCCGCTGGGCGACGAGCTGCTGGTTCACCTGCTGGCAGCTGCGCGCTCTTTGTGCTGGTGGCTC
CCAGCTGCGCCTACCAGGTGTGCGGGCCCGCTGTACCAGCTCGGCGCTGCCACTCAGGCCCGCCCC
GCCACAGCTAGTGGACCCGAAGGCGTCTGGGATGCGAACGGGCTGGAACCATAGCGTCAGGGAGGCC
GGGGTCCCCCTGGGCTGCCAGCCCCGGGTGCGAGGAGCGCGGGGCGAGTGCAGCCGAAGTCTGCCGT
TGCCAAAGAGGCCAGGCGTGGCGCTGCCCTGAGCCGGAGCGGACGCCGTTGGCAGGGGTCTGGGC
CCACCCGGCAGGACGCTGGACCGAGTGACCGTGGTTTCTGTGTTGTACCTGCCAGACCCCGCGAA
GAAGCCACTCTTTGGAGGGTGGCTCTCTGGCACGCGCCACTCCACCCATCCGTGGCCGCGCAGCAC
ACGCGGGCCCCCATCCACATCGCGGCCACCAGTCCCTGGGACACGCCCTTGTCCCCGGTGTACGCCGA
GACCAAGCACTTCTCTACTCCTCAGGCGACAAGGAGCAGCTGCGGCCCTCCTTCTACTCAGCTCTCTG
AGGCCAGCCTGACTGGCGCTCGGAGGCTCGTGGAGACCATCTTTCTGGTTCCAGGCCCTGGATGCCAG
GGACTCCCCGAGGTTGCCCGCCTGCCACGCGCTACTGGCAAATGCGGCCCTGTTTCTGGAGCTGCT
TGGGAACCACGCGCAGTGCCCTACGGGTGCTCCTCAAGACGCACTGCCGCTGCGAGCTGCGGTACC
CCAGCAGCGGTGTCTGTGCCGGGAGAAGCCCCAGGGCTCTGTGGCGGCCCGAGGAGGAGACACAG
ACCCCCGTGCGCTGGTGCAGCTGCTCCGCCAGCACAGCAGCCCCGGCAGGTGTACGGCTTCGTGGGGC
CTGCTGCGCCGCTGGTCCCCAGGCCTCTGGGGCTCCAGGCACAACGCGCCTTCTCAGGAAC



[View online »](#)

ACCAAGAAGTTCATCTCCCTGGGAAGCATGCCAAGCTCTCGCTGCAGGAGCTGACGTGGAAGATGAGCG
 TCGGGACTGCGCTTGGCTGCGCAGGAGCCAGGGTTGGCTGTGTTCCGGCCGACAGCACCGTCTGCG
 TGAGGAGATCCTGGCAAGTTCCTGCACTGGCTGATGAGTGTGTACGTCTGAGCTGCTCAGGTCTTTC
 TTTTATGTACGGAGACGACGTTTCAAAGAAGCAGGCTCTTTTTCTACCGAAGAGTGTCTGGAGCAAGT
 TGCAAAGCATTGGAATCAGACAGCACTGAAGAGGGTGCAGCTGCGGGAGCTGTCCGAAGCAGAGGTGAG
 GCAGCATCGGGAAGCCAGGCCCGCCCTGCTGACGTCCAGACTCCGCTTCATCCCCAAGCTGACGGGCTG
 CGGCCGATTGTGAACATGGACTACGTCTGTTGGAGCCAGAAGCTCCGAGAGAAAAGAGGGCCAGCCAGT
 TCACCTCGAGGGTGAAGGCACTGTTACGCTGCTCAACTACGAGCGGGCCGCGCCCGCCCTCCTGGG
 CGCCTCTGTGCTGGGCTGGACGATATCCACAGGGCTGGCGCACCTTCGTGCTGCTGCGGGCCAG
 GACCCGCCCTGAGCTGTACTTTGTCAAGGTGGATGTGACGGGCGCTACGACACCATCCCCAGGACA
 GGCTCACGGAGGTATCGCCAGCATCATCAAACCCAGAACACGTACTGCGTGCCTGGTATGCCGTGGT
 CCAGAAGGCCGCCATGGGCACGTCCGCAAGGCCCTTCAAGAGCCACGTCTACCTTGACAGACCTCCAG
 CCGTACATGCGACAGTTCGTGGCTCACCTGCAGGAGACGAGCCCGCTGAGGGATGCCGTGCTATCGAGC
 AGAGCTCCTCCCTGAATGAGGCCAGCAGTGGCCTCTTCGACGTGTTCTACGCTTCATGTGCCACCAGC
 CGTGCGCATCAGGGCAAGTCTACGTCCAGTCCAGGGGATCCGCGAGGGCTCCATCCTCTCCAGCTG
 CTTGACGCTGTGCTACGGCGACATGGAGAACAAGCTGTTTGGGGGATTCGGCGGACGGGCTGCTCC
 TGGCTTGGTGGATGATTTCTTGTGGTACACCTCACCTCACCCACGCGAAAACCTTCTCAGGACCT
 GGTCCGAGGTGTCCCTGAGTATGGCTGCGTGGTGAACCTGCGCAAGACAGTGGTGAACCTCCCTGTAGAA
 GATGAGGCCCTGGGTGGCACGGCTTTTGTTCAGATGCCGGCCACGGCCTATCCCTGGTGCGGCTGC
 TGCTGGATACCCGGACCTGGAGGTGCAGAGCGACTACTCCAGCTATGCCCGGACCTCCATCAGAGCCAG
 TCTCACCTTAACCGCGGCTTCAAGGCTGGGAGGAACATGCGTCGAAACTTTTGGGGTCTTGGCGTGC
 AAGTGTACAGCCTGTTTCTGGATTTGCAGGTGAACAGCCTCCAGACGGTGTGCACCAACATCTACAAGA
 TCCTCTGCTGCAGGCGTACAGTTCATGCATGTGCTGCAGCTCCATTTTCATCAGCAAGTTGGAA
 GAACCCACATTTTTCTGCGCGTATCTCTGACACGGCCTCCCTCTGCTACTCCATCCTGAAAGCCAAG
 AACGCAGGGATGTCGCTGGGGCCAAAGGGCCCGCCGCGCCTCTGCCCTCCGAGGCCGTGACGTGGCTGT
 GCCACCAAGCATTCTGCTCAAGCTGACTCGACACCGTGTACCTACGTGCCACTCCTGGGGTCACTCAG
 GACAGCCAGACGACGCTGAGTCGGAAGCTCCCGGGGACGACGCTGACTGCCCTGGAGGCCGAGCCAAC
 CCGGCACTGCCCTCAGACTTCAAGACCATCCTGGAC

AGCGGACCGACGCGTACGCGGCCGCTCGAG – GFP Tag – GTTTAA

Protein Sequence:

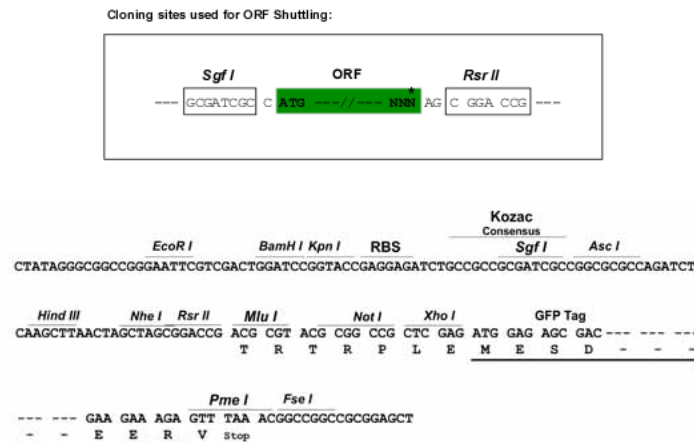
>RG217436 representing NM_198253
 Red=Cloning site Green=Tags(s)

MPRAPRCRAVRSLLRSHYREVLPLATFVRRLLGPQGWRLVQRGDPAAFRALVAQCLVCPWDARPPPAAPS
 FRQVSKLKVVARVLRQRCERGAKNVLAFFGALLDARGGPEAFSTSVRSYLPNTVTDALRSGAWGLL
 LRRVGGDVLVHLLARCALFVLAAPSCAYQVCGPPLYQLGAATQARPPPHASGPRRRLGCERAWNHVREA
 GVPLGLPAPGARRRGGASRSLLPKRPRRGAAPERPPTVPGQGSWAHPGRTRGSPDRGFVVPSPARPAE
 EATSLEGALSGTRHSHPSVGRQHAGPPSTSRPPRPWDTPCPPVYAETKHFLYSSGDKEQLRPSFLLSSL
 RPSLTGARRLVETIFLGSRPWMPGTPRRLPRLPQRYWQMRPLFLELLGNHAQCPYGVLLKTHCLPRAAVT
 PAAGVCAAREKPPQGSVAPEEEDTPRRLVQLLRQHSSPWVYGFVRACLRRLVPPGLWGRHNERFLRN
 TKKFLISLKGKAKLSLQELTWKMSVRDCAWLRRSPGVGCVPAAEHRLREEILAKFLHLMVYVVELLRSF
 FYVTETTFQKNRLLFFYRKSVMWKLQSIGIRQHLKRVQLRELSEAEVRQHREARALLTSRLRFIPKPDGL
 RPIVNDYVVGARTFRREKRAERLTSRVKALFVNLNERARRPGLLGASVLGLDDIHRARWTFVLRVRAQ
 DPPPEL YFVKVDVTGAYDTIPQDRLEVIASIIKPQNTYCVRRYAVVQKAAHGHVRKAFKSHVSTLTDLQ
 PYMRQFVAHLQETSPLRDVAVVIEQSSSLNEASSGLFDVFLRFMCHHAVRIRGKSYVQCQGIPOQSILSTL
 LCSL CYGDMENKLFAGIRRDGLLLRLVDDFLLVTPHLTHAKTFLRTLVRGVPEYGCVVNLRKTVVNFPE
 DEALGGTAFVQMPAHGLFPWCGLLLDTRTLEVDYSSYARTSIRASLTFNRGFKAGRNMRRKLFVGLRL
 KCHSLFLDLQVNSLQTVCTNIYKILLLQAYRFHACVQLPFHQVWKNPTFFLRVISTASLCSYILKAK
 NAGMSLGAAGAAGPLPSEAVQWLCHQAFLLKLTRHRVTVVPLLGLSLRTAQTQLSRKLPGTTLTALEAAAN
 PALPSDFKTILD

SGPTRRRLE – GFP Tag – V

Restriction Sites: SgfI-RsrII

Cloning Scheme:



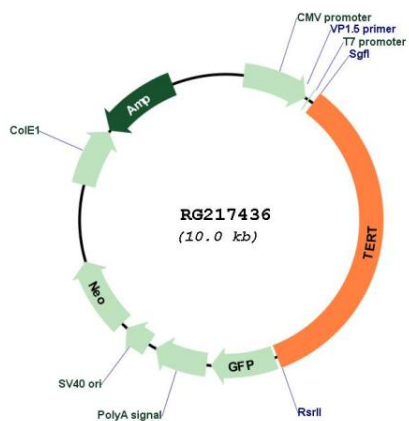
ACCN: NM_198253

ORF Size: 3396 bp

OTI Disclaimer: The molecular sequence of this clone aligns with the gene accession number as a point of reference only. However, individual transcript sequences of the same gene can differ through naturally occurring variations (e.g. polymorphisms), each with its own valid existence. This clone is substantially in agreement with the reference, but a complete review of all prevailing variants is recommended prior to use. [More info](#)

OTI Annotation:	This clone was engineered to express the complete ORF with an expression tag. Expression varies depending on the nature of the gene.
Components:	The ORF clone is ion-exchange column purified and shipped in a 2D barcoded Matrix tube containing 10ug of transfection-ready, dried plasmid DNA (reconstitute with 100 ul of water).
Reconstitution Method:	<ol style="list-style-type: none">1. Centrifuge at 5,000xg for 5min.2. Carefully open the tube and add 100ul of sterile water to dissolve the DNA.3. Close the tube and incubate for 10 minutes at room temperature.4. Briefly vortex the tube and then do a quick spin (less than 5000xg) to concentrate the liquid at the bottom.5. Store the suspended plasmid at -20°C. The DNA is stable for at least one year from date of shipping when stored at -20°C.
RefSeq:	NM_198253.2 , NP_937983.2
RefSeq Size:	4018 bp
RefSeq ORF:	3399 bp
Locus ID:	7015
UniProt ID:	O14746
Cytogenetics:	5p15.33
Protein Families:	Druggable Genome
Gene Summary:	<p>Telomerase is a ribonucleoprotein polymerase that maintains telomere ends by addition of the telomere repeat TTAGGG. The enzyme consists of a protein component with reverse transcriptase activity, encoded by this gene, and an RNA component which serves as a template for the telomere repeat. Telomerase expression plays a role in cellular senescence, as it is normally repressed in postnatal somatic cells resulting in progressive shortening of telomeres. Deregulation of telomerase expression in somatic cells may be involved in oncogenesis. Studies in mouse suggest that telomerase also participates in chromosomal repair, since de novo synthesis of telomere repeats may occur at double-stranded breaks. Alternatively spliced variants encoding different isoforms of telomerase reverse transcriptase have been identified; the full-length sequence of some variants has not been determined. Alternative splicing at this locus is thought to be one mechanism of regulation of telomerase activity. [provided by RefSeq, Jul 2008]</p>

Product images:



Circular map for RG217436