

Product datasheet for **RG217405**

USP42 (NM_032172) Human Tagged ORF Clone

Product data:

Product Type:	Expression Plasmids
Product Name:	USP42 (NM_032172) Human Tagged ORF Clone
Tag:	TurboGFP
Symbol:	USP42
Mammalian Cell Selection:	Neomycin
Vector:	pCMV6-AC-GFP (PS100010)
E. coli Selection:	Ampicillin (100 ug/mL)
ORF Nucleotide Sequence:	>RG217405 representing NM_032172 Red=Cloning site Blue=ORF Green=Tags(s)

TTTTGTAATACGACTCACTATAGGGCGGCCGGGAATTCGTCGACTGGATCCGGTACCGAGGAGATCTGCC
GCC**CGATCGCC**

ATGACCATAGTTGACAAAGCTTCTGAATCTTCAGACCCATCAGCCTATCAGAATCAGCCTGGCAGCTCCG
AGGCAGTCTCACCTGGAGACATGGATGCAGGTTCTGCCAGCTGGGGTCTGTGTCTTCATTGAATGATGT
GTCAAATCACACTTTCTTTAGGACCAGTACCTGGTGTGTAGTTTATTCGAGTTCATCTGTACCTGAT
AAATCAAAACCATCACCAAAAAGGATCAAGCCCTAGGTGATGGCATCGCTCTCCACAGAAAGTTCTTT
TCCCATCTGAGAAGATTGTCTTAAGTGGCAACAAACTCATAGAGTTGGAGCTGGGCTCCAGAATTTGGG
CAATACCTGTTTTGCCAATGCAGCACTGCAGTGTTTAACCTACACACCACCTCTTGCCAATTACATGCTA
TCACATGAACACTCCAAAACATGTCATGCAAGAAGCTTTTGTATGATGTGTACAATGCAAGCACATATTA
CCCAGGCACTCAGTAATCCTGGGACGTTATTAACCAATGTTTGTATCAATGAGATGCGGCGTATAGC
TAGGCACCTCCGTTTTGGAAACCAAGAAGATGCCCATGAATTCCTTCAATACACTGTTGATGCTATGCAG
AAAGCATGCTTGAATGGCAGCAATAAATTAGACAGACACACCCAGGCCACCACTCTGTTTGTGATGAT
TTGGAGGATACCTAAGATCTAGAGTCAAATGTTTAAATGCAAGGGCGTTTCAGATACTTTTGTCCATA
TCTTGATATAACATTGGAGATAAAGGCTGCTCAGAGTGTCAACAAGGCATTGGAGCAGTTTGTGAAGCCG
GAACAGCTTGATGGAGAAAACCTGTACAAGTGCAGCAAGTGTAAAAGATGGTTCCAGCTCAAAGAGGT
TCACTATCCATAGATCCTCTAATGTTCTTACACTTTCTCTGAAACGTTTTGCAAATTTACCGGTGGAAA
AATTGCTAAGGATGTGAAATACCCTGAGTATCTTGATATTCGGCCATATATGTCTCAACCAACGGAGAG
CCAATTGTCTACGTTCTGTATGCAGTGTGGTCCACACTGGTTTTAATTGCCATGCTGGCCATTACTTCT
GCTACATAAAAGCTAGCAATGGCCTCTGGTATCAAATGAATGACTCCATTGTATCTACCAGTGATATTAG
ATCGGTAATCAGCAACAAGCCTATGTGCTCTTTATATCAGGTCCCATGATGTGAAAAATGGAGGTGAA
CTTACTCATCCCACCATAGCCCCGGCCAGTCTCTCCCCGCCCGTCATCAGTCAGCGGGTTGTACCA
ACAACAGGCTGCGCCAGGCTTTATCGGACCACAGCTTCCCTCTCACATGATAAAGAATCCACCTCACTT
AAATGGGACTGGACCATGAAAGACACGCAAGCAGTTCATGTGAGTCTCAACGGGAATTCAGTGTGTC
AACAGGGCTAGTCTGTTAATGCTTCAGTCTCTGTCAAAACCTGGTCAGTTAATAGGTCCTCAGTATCC
CAGAACATCCTAAGAAACAAAAATTACAATCAGTATTCACAACAGTTGCCTGTTCCGCACTGTGATGTC



[View online »](#)

TCAACCTAACCTTCATAGTAATTCTTTGGAGAACCCTACCAAGCCGTTCCCTCTTCTACCATTACCAAT
TCTGCAGTACAGTCTACCTCGAACGCATCTACGATGTCAGTTTCTAGTAAAGTAACAAAACCGATCCCC
GCAGTGAATCCTGCTCCCAGCCCGTGATGAATGGCAAATCCAAGCTGAACTCCAGCGTGTGGTGCCTA
TGGCGCCGAGTCTCTGAGGACTCTGACGAGGAGTCAAAGGGGCTGGGCAAGGAGAATGGGATTGGTACG
ATTGTGAGCTCCCACTCTCCCGCCAAGATGCCGAAGATGAGGAGGCCACTCCGCACGAGCTTCAAGAAC
CCATGACCCTAAACGGTGCTAATAGTGCAGACAGCGACAGTGACCCGAAAGAAAACCGCCTAGCGCTGA
TGGTGCCAGCTGCCAAGGCCAGCCTGCCCTGCACTCAGAAAATCCCTTTGCTAAGGCAACGGTCTTCCT
GGAAAGTTGATGCCTGCTCCTTTGCTGTCTCTCCAGAAGACAAAATCTTAGAGACCTTCAGGCTTAGCA
ACAAAAGTAAAGGCTCGACGGATGAAATGAGTGCACCTGGAGCAGAGAGGGGCCCTCCCGAGGACCGCA
CGCCGAGCCTCAGCCTGGCAGCCCGCCGCCGAATCCCTGGAGGAGCCAGATGCGGCCGCCGGCCTCAGC
AGCACCAAGAAGGCTCCGCCGCCCGCGATCCCGGCACCCCGCTACCAAGAAGGCGCCTGGGAGGCCA
TGGCCGTGCCCCGAGGAGCCTCCGCCAGCGCCGGCGAGGACATCGTGGGGGACACAGCACCCCTGA
CCTGTGTGATCCCGGAGCTTAACAGGCGATGCGAGCCGTTGTCCAGGACGAAAGGGATGATCGCG
GAGGGCCCGGGACTCGCGTGGCGGAAGCCCGGAAGGGTTGAGTCCGGCTCCGCTCGCGGTGCG
AGGAGCCCTGCGAGCAGCCTCTTGTTCACCCAGCGGGACCACGCCGGGACGCTCAGGACCCATC
CCAGAGCTTGGGCGACCCGAGGCCGAGAGCGGCCAGCTCCTGTGCTGGACATGGCCCCGGCCGGT
CACCCGGAAGGGGACGCTGAGCCTAGCCCCGGCGAGAGGGTTCGAGGACGCCCGCGCGCCAAAGCCCA
GCCCTTCCCAGCGAAGGAGAAAATCGGCAGCCTCAGAAAAGTGGACCGAGGCCACTACCGCAGCCGGAG
AGAGCGCTCGTCCAGCGGGGAGCCGCCAGAGAGAGCAGGAGCAAGACTGAGGGCCACCGTACCGGCGG
CGCCGACCTGCCCCGGGAGCGCGACCGCCAGGACCGCCACGCCCGGAGCACCACCCGGCCACGGCG
ACAGGCTCAGCCCTGGCAGCGCCGCTCTTGGCAGGTGCAGTACCACCACTCCCGACACCGGAGCGG
GGTGGAGCTGGACTGGGTGAGACCACTACACCGAGGGCGAGCGTGGTGGGGCCGGGAGAAGTTCTAC
CCCGCAGGCGCGCTGGGACAGGTGCCGTAATACCATGACAGGTACGCCCTGTACGCTGCCCGGGACT
GGAAGCCCTTCCACGGCGCCCGGAGCAGGAGCGGGCCGGGCTGCACGAGCGGCCGACAAGGACCACAA
CCGGGGCCGTAGGGGCTGCGAGCCGCCGGGAGAGGGAGCGGCACCGCCCCAGCAGCCCCGCGCAGGC
GCGCCCCACGCCCTCGCCCCGACCCCGACCGCTTCTCCACGACAGAAGTGCACCTGTAGCCGGAGACA
ACTGTAACCTCTCTGATCGGTTTACGAACACGAAAATGGAAAGTCCCGAAAACGGAGACACGACAGTGT
GGAGAACAGTACAGTCACTGTTGAAAAGAAAGCCCGGAGGAGCGAACAGAAGGATCCTCTAGAAGAGCT
AAAGCAAAGAAGCACAAAAATCAAAGAAGAAAAGAAATCCAAAGACAAACACCGAGACCGGACTCCA
GGCATCAGCAGGACTCAGACCTCTCAGCAGCGTGTCTGACGCTGACCTCCACAGACACAAAAAAGAA
GAAGAAAAGAAGAGACATTCAAGAAAATCAGAGGACTTTGTTAAAGATTCAAGACTGCACTTACCAGG
GTCACCAGCTTGGAGACTGTGCCAGTTCCGGAGAGCCAGGGTGGCTTTCCTCTCTCTGGTGGCCCGC
CTCTGGAAGCGTCCGACCTTCCGTGAGAAAACGAAACACTTACGGATGGAAAGCAGGGATGACAGGTG
TCGTCTTTGAGTATGGCCAGGGTAT

ACGCGTACGCGGCCGCTCGAG - GFP Tag - GTTTAA

Protein Sequence: >RG217405 representing NM_032172
 Red=Cloning site Green=Tags(s)

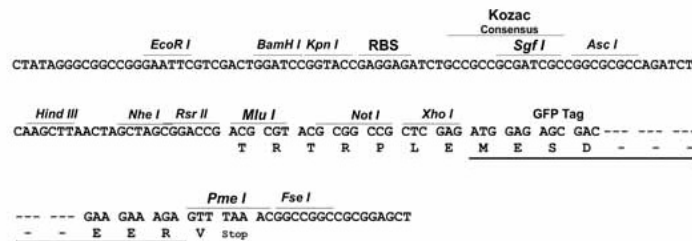
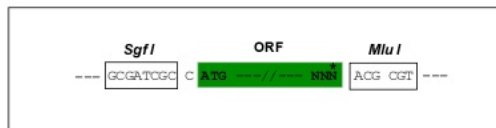
MTIVDKASESSDPSAYQNQPGSSEAVSPGMDAGSASWGA VSSLNDVSNHTLSLGPVPGAVVYSSSSVDP
 KSKPSPQKDQALGDGIAPPQKVLFPSEKICLKWQQTHRVGAGLQNLGNTCFANAALQCLTYTPPLANYML
 SHEHSTCHAEGFCMMCTMQAHITQALSNPGDVIKPMFVINEMRRIARHFRFGNQEDAHEFLQYTVDMQ
 KACLNGSNKLD RHTQATTLVCQIFGGYLSRVKCLNCKGVSDTFDPYLDITLEIKAAQSVNKALEQFVKP
 EQLDGENSYKCSKCKMVPASKRFTIHRSSNVLTLSLKR FANFTGGKIAKDVKYPEYLDIRPYMSQPNGE
 PIYVYL YAVLVHTGFNCHAGHYFCYIKASNGLWYQMND SIVSTSDIRSVLSQQA YVLFYIRSHDVKNNGE
 LTHPTHSPGQSSRPVVISQRVVTNKQAAPGFIGPQLPSHMIKNPPLNGTGPLKDTPSSSMSSPNGNSSV
 NRASPVNASASVQNWVNRSSV IPEHPKQKITISIH NKLPVRQCQSQPNLHSNLENPTKPVPSSTITN
 SAVQSTSNASTMSVSSKVTKPIPRSESCSQPVMNGKSKLNSSVLVPYGAESSEDSDEESKGLGKENGIGT
 IVSSHSPQDAEDEEATPHELQEPMTLNGANSADSDPKENGLAPDGASCQGPALHSENPFAKANGLP
 GKLM PALLSLPEDKILETFRLSNKLGSTDEMSAPGAERGPPEDRDAEPQGPSPAAESLEEPDAAAGLS
 STKKAPPPRDPGTPATKEGAWEMAVAPEPPPSAGEDIVGDTAPPDLCDPGSLTGDASPLSQDAKGMIA
 EGPRDSALAEAEGLSPAPPARSEEPCEQLLVHPSGDHARDAQDPSQSLGAPEAAERPPAPVLDMAPAG
 HPEGDAEPPSPGERVEDAAAPKAPGSPAKEKIGSLRKVDRGHYRSRRERSSSGEPARESRKTEGHRHRR
 RRTCPREDRDRHAPHHPHGHGDR LSPGERRSLGRCSHHHSRHRSGVELDWVRHHYTEGERGWGREKFY
 PDRPRWDRCRYYHDRYALYAARDWKPFFHGGREHERAGLHERPHKDHNRGRRGCEPARERERHRPSSPRAG
 APHALAPHDRFSHDRTALVAGDNCNLSDRFHEHENGKSRKRHRHDSVENS DSHVEKKARRSEQKDPLEEP
 KAKKHKKSKKKKSKDKHRDRSRHQDSDL SAACSDADLHRHKKKKKKKRHSRKS EDFVKDSELHLPR
 VTSLETVAQFRAQGGFPLSGGPPLGEGVGFREKTKHLRMSRDDRCLFEYGGQD

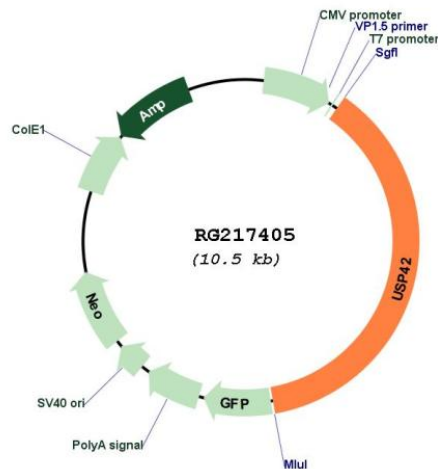
TRTRPLE - GFP Tag - V

Restriction Sites: SgfI-MluI

Cloning Scheme:

Cloning sites used for ORF Shuttling:



Plasmid Map:


ACCN: NM_032172

ORF Size: 3948 bp

OTI Disclaimer: The molecular sequence of this clone aligns with the gene accession number as a point of reference only. However, individual transcript sequences of the same gene can differ through naturally occurring variations (e.g. polymorphisms), each with its own valid existence. This clone is substantially in agreement with the reference, but a complete review of all prevailing variants is recommended prior to use. [More info](#)

OTI Annotation: This clone was engineered to express the complete ORF with an expression tag. Expression varies depending on the nature of the gene.

Components: The ORF clone is ion-exchange column purified and shipped in a 2D barcoded Matrix tube containing 10ug of transfection-ready, dried plasmid DNA (reconstitute with 100 ul of water).

Reconstitution Method:

1. Centrifuge at 5,000xg for 5min.
2. Carefully open the tube and add 100ul of sterile water to dissolve the DNA.
3. Close the tube and incubate for 10 minutes at room temperature.
4. Briefly vortex the tube and then do a quick spin (less than 5000xg) to concentrate the liquid at the bottom.
5. Store the suspended plasmid at -20°C. The DNA is stable for at least one year from date of shipping when stored at -20°C.

RefSeq: [NM_032172.3](#)

RefSeq Size: 5109 bp

RefSeq ORF: 3951 bp

Locus ID: 84132

UniProt ID: [Q9H9J4](#)

Cytogenetics: 7p22.1

Protein Families: Druggable Genome, Protease

Gene Summary: Deubiquitinating enzyme which may play an important role during spermatogenesis.
[UniProtKB/Swiss-Prot Function]