

## Product datasheet for **RG217385**

### ADAMTS13 (NM\_139027) Human Tagged ORF Clone

#### Product data:

Product Type:	Expression Plasmids
Product Name:	ADAMTS13 (NM_139027) Human Tagged ORF Clone
Tag:	TurboGFP
Symbol:	ADAMTS13
Synonyms:	ADAM-TS13; ADAMTS-13; C9orf8; vWF-CP; VWFCP
Mammalian Cell Selection:	Neomycin
Vector:	pCMV6-AC-GFP (PS100010)
E. coli Selection:	Ampicillin (100 ug/mL)
ORF Nucleotide Sequence:	>RG217385 representing NM_139027 Red=Cloning site Blue=ORF Green=Tags(s)

TTTTGTAATACGACTCACTATAGGGCGGCCGGAATTCGTCGACTGGATCCGGTACCGAGGAGATCTGCC  
GCC**CGATCGCC**

ATGCACCAGCGTCACCCCGGGCAAGATGCCCTCCCCTCTGTGTGGCCGGAATCCTTGCCTGTGGCTTTC  
TCCTGGGCTGCTGGGACCCTCCATTTCCAGCAGAGTTGTCTTCAGGCTTTGGAGCCACAGGCCGTGTC  
TTCTTACTTGAGCCCTGGTGTCTCCCTAAAAGGCCGCCCTCCTCCCCTGGCTTCCAGAGGCAGAGGCAG  
AGGCAGAGGCGGGCTGCAGGCGGCATCCTACACCTGGAGCTGCTGGTGGCCGTGGCCCCGATGTCTTCC  
AGGCTCACCAGGAGGACACAGAGCGCTATGTGCTCACCAACCTCAACATCGGGGAGAACTGCTTCGGGA  
CCCGTCCCTGGGGCTCAGTTTCGGGTGCACCTGGTGAAGATGGTCATTCTGACAGAGCCTGAGGGTGC  
CCAAATATCACAGCCAACCTCACCTCGTCCCTGCTGAGCGTCTGTGGGTGGAGCCAGACCATCAACCCTG  
AGGACGACACGGATCCTGGCCATGCTGACCTGGTCCCTCTATATCACTAGGTTTGACCTGGAGTTGCCTGA  
TGGTAACCGGCAGGTGCGGGGCGTCACCCAGCTGGGCGGTGCCTGCTCCCCAACCTGGAGCTGCCTCATT  
ACCGAGGACACTGGCTTCGACCTGGGAGTACCATTGCCCATGAGATTGGGACAGCTTCGGCCTGGAGC  
ACGACGGCGGCCCGGCAGCGGCTGCGGCCAGCGGACAGTGTGGCTTCGGACGGCGCCGCGCCCGC  
CGCCGGCTCGCTGGTCCCCGTCAGCCGCGGCGAGCTGCTGAGCCTGCTCAGCGCAGGACGGCGCGC  
TGCGTGTGGACCCCGCGGCTCAACCCGGTCCGCGGGCACCCCGGATGCGCAGCTGGCCTGCCTCT  
ACTACAGCGCAACGAGCAGTGCCTGGCTTCGGCCCAAGGCTGTGCTGACCTTCGCCAGGGA  
GCACCTGGATATGTGCCAGGCCCTCCTGCCACACAGACCCGCTGGACCAAAGCAGCTGACAGCCGCTC  
CTCGTTCTCTCTGGATGGGACAGAATGTGGCGTGGAGAAGTGGTGTCCAAGGGTCTGCGCTCCC  
TGGTGGAGCTGACCCCATAGCAGCAGTGCATGGGCGTGGTCTAGCTGGGGTCCCCGAAGTCTTGTCTC  
CCGCTCTGCGGAGGAGGTGTGGTACCAGGAGGCGGAGTGAACAACCCAGACCTGCCTTTGGGGG  
CGTGATGTGTTGGTGTGACCTCCAGGCCGAGATGTGCAACACTCAGGCCTGCGAGAAGACCCAGCTGG  
AGTTCATGTGCAACAGTGCAGGACGACGGCCAGCCGCTGCGCTCCTCCCCTGGCGGCGCTCCTT  
CTACCACTGGGGTGTGCTGTACCACACAGCCAAGGGATGCTCTGTGCAGACACATGTGCCGGCCATT



[View online >](#)

GCGAGAGCTTCATCATGAAGCGTGGAGACAGCTTCCTCGATGGGACCCGGTGTATGCCAAGTGGCCCC  
GGGAGGACGGGACCCTGAGCCTGTGTGTGTCGGGCAGCTGCAGGACATTTGGCTGTGATGGTAGGATGGA  
CTCCCAGCAGGTATGGGACAGGTGCCAGGTGTGTGGTGGGACAACAGCACGTGCAGCCCACGGAAGGGC  
TCTTTACAGCTGGCAGAGCGAGAGAATATGTCACATTTCTGACAGTTACCCCAACCTGACCAGTGTCT  
ACATTGCCAACACAGGCCTCTCTTACACACTTGGCGGTGAGGATCGGAGGGCGCTATGTCGTGGCTGG  
GAAGATGAGCATCTCCCCTAACACCACCTACCCCTCCCTCCTGGAGGATGGTCGTGTCGAGTACAGAGTG  
GCCCTACCGAGGACCGCTGCCCGCCTGGAGGAGATCCGCATCTGGGGACCCCTCCAGGAAGATGCTG  
ACATCCAGGTTTACAGGCGGTATGGCGAGGAGTATGGCAACCTCACCCGCCAGACATCACCTTACCTA  
CTTCCAGCCTAAGCCACGGCAGGCCTGGGTGTGGGCCGCTGTGCGTGGGCCCTGCTCGGTGAGCTGTGGG  
GCAGGGCTGCGCTGGTAAACTACAGCTGCCTGGACCAGGCCAGGAAGGAGTTGGTGGAGACTGTCCAGT  
GCCAAGGGAGCCAGCAGCCACCAGCGTGGCCAGAGGCCTGCGTGTCTGAACCCCTGCCCTCCCTACTGGG  
GGTGGGAGACTTCGGCCCATGCAGCGCCTCTGTGGGGCGGCCCTGCGGGAGCGGCCAGTGCCTGCGTG  
GAGGCCAGGGCAGCCTCCTGAAGACATTGCCCCAGCCCGTGCAGAGCAGGGGCCAGCAGCCAGCTG  
TGGCGCTGAAACCTGCAACCCCGCCTGCCCTGCCAGGTGGAGGTGTGAGAGCCAGCTCATGCAC  
ATCAGCTGGTGGAGCAGGCCTGGCCTTGGAGAACGAGACCTGTGTGCCAGGGCAGATGGCTGGAGGCT  
CCAGTGACTGAGGGCCCTGGCTCCGTAGATGAGAAGCTGCCTGCCCTGAGCCCTGTGTCGGGATGTCAT  
GTCTCCAGGCTGGGGCCATCTGGATGCCACCTCTGCAGGGGAGAAGGCTCCCTCCCATGGGGCAGCAT  
CAGGACGGGGGCTCAAGCTGCACACGTGTGACCCTGCGGCAGGGTCTGCTCCGTCTCCTGCGGGCGA  
GGTCTGATGGAGCTGCGTTTCTGTGCATGGACTTGCCTCAGGGTGCCTGTCCAGGAAGAGCTGTGTG  
GCCTGGCAAGCAAGCCTGGGAGCCGGCGGGAGGTCTGCCAGGCTGTCCGTGCCCTGCTCGGTGGCAGTA  
CAAGCTGGCGCCTGCAGCGTGAAGTGTGGGAGAGGGTCTGCGGAGGATCCTGATTGTGCCCGGGCC  
CATGGGAGGACGATGGTGAAGGATCCTGTTGGACACCAGTGCAGGGGCTGCCTCGCCCGAACCC  
AGGAGGCCTGCAGCCTGGAGCCCTGCCACCTAGGTGGAAGTCATGTCCCTTGGCCCATGTTTCGGCCAG  
CTGTGGCCTTGGCACTGCTAGACGCTCGGTGGCCTGTGTGCAGCTCGACCAAGGCCAGGACGTGGAGGTG  
GACGAGGCGCCCTGTGCGGCGCTGGTGCAGCCAGGCCAGTGTCCCTGTCTCATTGCCGACTGCACCT  
ACCGCTGGCATGTTGGCACCTGGATGGAGTGTCTGTTTCTGTGGGGATGGCATCCAGCGCCGGCGTGA  
CACCTGCCTCGGACCCAGGCCAGGCCTGTGCCAGCTGATTCTGCCAGCACTTGCCAAGCCGGTG  
ACTGTGCGTGGCTGTGGGCTGGGCCCTGTGTGGGACAGGGTGCCTGTGGCAGGCAGCACCTTGAGCCAA  
CAGGAACCATTGACATGCGAGGCCAGGGCAGGCAGACTGTGCAGTGGCCATTGGCGGCCCTCGGGGA  
GGTGGTGACCCTCCGCTCCTTGAAGTCTCTCAACTGCAGTGCAGGGGACATGTTGCTGCTTTGGGGC  
CGGCTCACCTGGAGGAAGATGTGCAGGAAGCTGTTGGACATGACTTTCAGCTCCAAGACCAACACGCTGG  
TGGTGAGGACGCTGCGGGCGGCCAGGAGGTGGGGTGTGCTGCGGTATGGGAGCCAGCTTGTCTCTGA  
AACCTTACAGAGAATGTGACATGCAGCTCTTGGGCCCTGGGGTAAATCGTGAGCCCTCGCTGAGT  
CCAGCCACGAGTAATGCAGGGGGCTGCCGGCTCTTCAATTAATGTGGCTCCGCACGCACGGATTGCCATCC  
ATGCCCTGGCCACCAACATGGGCGCTGGGACCGAGGGAGCCAATGCCAGCTACATCTTATCCGGGACAC  
CCACAGCTTGAAGACACAGCGTTCCATGGGCAGCAGGTGCTCTACTGGGAGTCAAGAGCAGCCAGGCT  
GAGATGGAGTTCAAGCGAGGGCTCCTGAAGGCTCAGGCCAGCCTGCGGGGCCAGTACTGGACCCTCAAT  
CATGGGTACCGGAGATGCAGGACCCTCAGTCTGGAAGGAAAGGAAGGAACC

ACGCGTACGCGGCCGCTCGAG - GFP Tag - GTTTAA

**Protein Sequence:** >RG217385 representing NM\_139027  
 Red=Cloning site Green=Tags(s)

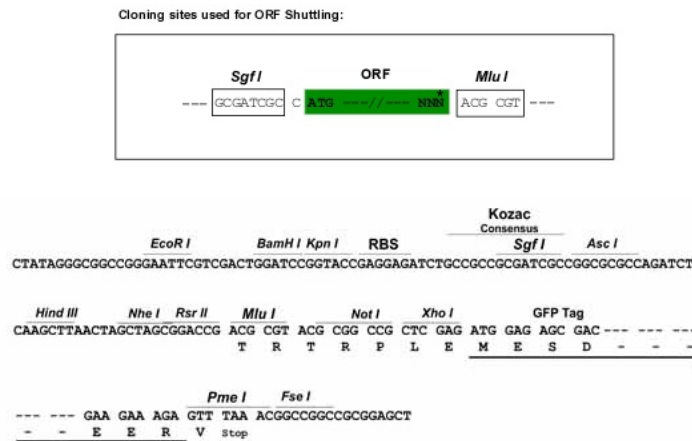
```
MHQRHPRARCPLCVAGILACGFLLGCWGPSHFQQSCLQALEPQAVSSYLSPGAPLKGRPPSPGFQRQRQ
RQRRRAAGGILHLELLVAVGPDVFQAHQEDTERYVLTNLNIGAELLRDPSLGAQFRVHLVKMVILTEPEGA
PNITANLTSLLSVCGWSQTINPEDDTPGHADLVLYITRFDLELPDGNRQVYRGVTQLGGACSPTWSCLI
TEDTGFDLGVTTIAHEIGHSFGL EHDGAPGSGCGPSGHVMSDGAAPRAGLAWSPCSRRLQLSLLSAGRAR
CVWDPPRPQPGSAGHPPDAQPLYYANEQCRVAFGPKAVACTFAREHLDMCQALSCHTDPLDQSSCSRL
LVPLLDGTECGVEKWC SKGRCSLVELTPIAAVHGRWSSWGPRSPCSRSCGGGVVTRRRQCNNPRPAFGG
RACV GADLQAEMCNTQACEKTQLEFMSQQCARTDGGQPLRSPGGASFYHWGA AVPHSQGDALCRHMCRAI
GESFIMKRGSDFLDGTRCMPSPGREDGTL SLCVSGS CRTFGCDGRMDSQQVWDR CQVCGDNSTCSPRKG
SFTAGRAREYVTF LVTVPNLTSVYIANHRPLFTHLAVRIGGRYV VAGKMSISPNTTYP S LLEDGRVEYRV
ALTEDR LPRLEEIRIWG PLQEDADIQVYRRY GEEYGNL TRPDITFTYFQPKPRQAWVWAAVRGPCS VSCG
AGLRWVNYSCLDQARKELVETVQCQGSQQPPAWPEACVLEPCPPYWAVGDFGPCSASC GGGLRERPVRCV
EAQGSLLKTLPPARCRAGAQQPAVALET CNPQPCPARWEVSEPS SCTSAGGAGL ALENETCVPGADGLEA
PVTEGPGSVDEKLPAPEPCVGMSCPPGWGHL DATSAGEKAPSPWGSIRTGAQAAHVWTPAAGSCSVSCGR
GLMELRFLC MDSALRVPVQEELCGLASKPGSRREVCQAVPCPARWQYKLAACSVSCGRGVVRRILYCARA
HGEDDGE EILLDTQCQGLPRPEPQEACSL EPCPPRWKVM SLGPCSASCGLGTARRSVACVQLDQGQDVEV
DEAACAALVRPEASVPCL IADCTYRWHVGTWMECSVSCGDGIQR RRDTCLGPQAQAPVPADFCQHLPKPV
TVRGCWAGPCVVGQACGRQHLEPTGTIDMRGPGQADCAVAIGRPLGEVTLRVLES SLNCSAGDMLLLWG
RLTWRKMC RKLDMTFSSKTNLTVVRQRCGRPGGGVLLRYGSQLAPETFYRECDMQLFGPWGEIVSPSL S
PATSNAGGCRLF INVAPHARIAIHALATNMGAGTEGANASYILIRDTHSLRTTAFHGQQVLYWESESSQA
EMEFSEGFLKAQASLRGQYWTLSWVPEMQDPQSWKGKEGT
```

TRTRPLE - GFP Tag - V

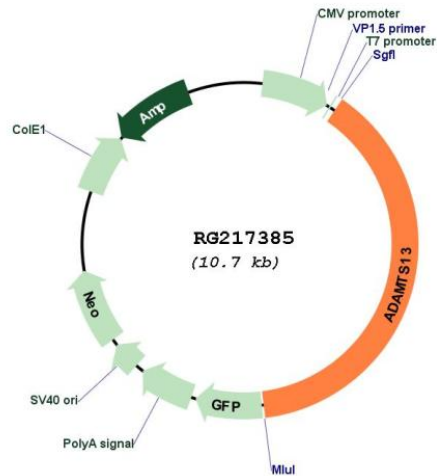
**Restriction Sites:**

Sgfl-MluI

**Cloning Scheme:**



## Plasmid Map:



ACCN: NM\_139027

ORF Size: 4113 bp

**OTI Disclaimer:** The molecular sequence of this clone aligns with the gene accession number as a point of reference only. However, individual transcript sequences of the same gene can differ through naturally occurring variations (e.g. polymorphisms), each with its own valid existence. This clone is substantially in agreement with the reference, but a complete review of all prevailing variants is recommended prior to use. [More info](#)

**OTI Annotation:** This clone was engineered to express the complete ORF with an expression tag. Expression varies depending on the nature of the gene.

**Components:** The ORF clone is ion-exchange column purified and shipped in a 2D barcoded Matrix tube containing 10ug of transfection-ready, dried plasmid DNA (reconstitute with 100 ul of water).

**Reconstitution Method:**

1. Centrifuge at 5,000xg for 5min.
2. Carefully open the tube and add 100ul of sterile water to dissolve the DNA.
3. Close the tube and incubate for 10 minutes at room temperature.
4. Briefly vortex the tube and then do a quick spin (less than 5000xg) to concentrate the liquid at the bottom.
5. Store the suspended plasmid at -20°C. The DNA is stable for at least one year from date of shipping when stored at -20°C.

RefSeq: [NM\\_139027.3](#), [NP\\_620596.2](#)

RefSeq Size: 4773 bp

RefSeq ORF: 4116 bp

Locus ID: 11093

UniProt ID: [Q76LX8](#)

Cytogenetics: 9q34.2

**Protein Families:** Secreted Protein, Transmembrane

**Gene Summary:** This gene encodes a member of a family of proteins containing several distinct regions, including a metalloproteinase domain, a disintegrin-like domain, and a thrombospondin type 1 (TS) motif. The enzyme encoded by this gene specifically cleaves von Willebrand Factor (vWF). Defects in this gene are associated with thrombotic thrombocytopenic purpura. Alternative splicing results in multiple transcript variants. [provided by RefSeq, Jul 2013]