

## Product datasheet for **RG217378**

### Amino terminal enhancer of split (AES) (NM\_198969) Human Tagged ORF Clone

#### Product data:

|                           |   |
|---------------------------|---|
| Product Type:             | Expression Plasmids   |
| Product Name:             | Amino terminal enhancer of split (AES) (NM_198969) Human Tagged ORF Clone   |
| Tag:                      | TurboGFP  |
| Symbol:                   | TLE5  |
| Synonyms:                 | AES; AES-1; AES-2; ESP1; GRG; Grg-5; GRG5                                   |
| Mammalian Cell Selection: | Neomycin  |
| Vector:                   | pCMV6-AC-GFP (PS100010)   |
| E. coli Selection:        | Ampicillin (100 ug/mL)  |
| ORF Nucleotide Sequence:  | >RG217378 representing NM_198969<br>Red=Cloning site Blue=ORF Green=Tags(s) |

TTTTGTAATACGACTCACTATAGGGCGGCCGGAATTCGTCGACTGGATCCGGTACCGAGGAGATCTGCC  
GCC**CGATCGCC**

ATGTGTCACAAGAATGGCTTCCCTCAGGAAGGCGGCATTACCGCTGCCTTCTGCAGAAAAGGAACTAA  
GGCTCAGCAAGAACCACCGCCAGCCAGAGCCAAGGTCACAGAGCACGTCCGTGGCACGCGTCCAGGTCCG  
TGCCACAGCAGGGCCGGCGGCTTCGACGCGGGCAGCCGGTCCCTTTTCTTGACAGATGGGAAACCGA  
GGCCCGGGCGGCTGCCGGGCTCCTCGCACCTACCCAGCAACTCAAATTCACCACCTCGGACTCCTGCC  
ACCGCATCAAAGACGAATTTAGCTACTGCAAGCTCAGTACCACAGCCTCAAGCTCGAATGTGACAAGTT  
GGCCAGTGAGAAGTCAGAGATGCAGCGTCACTATGTGATGTACTACGAGATGTCCACGGCTTGAACATC  
GAGATGCACAAACAGGCTGAGATCGTCAAAGGCTGAACGGGATTTGTGCCAGGTCTGCCCTACCTCT  
CCCAAGAGCACCAGCAGCAGGTCTTGGGAGCCATTGAGAGGGCCAAGCAGGTACCCGCTCCCGAGCTGAA  
CTCTATCATCCGACAGCAGCTCCAAGCCACCAGCTGTCCAGCTGCAGGCCCTGGCCCTGCCCTTGACC  
CCACTACCCGTGGGGCTGCAGCCGCTTCGCTGCCGGCGGTACGCGCAGGCACCGGCTCCTCTCGCTGT  
CCGCGCTGGGTTCCAGGCCACCTCTCCAAGGAAGACAAGAACGGGCACGATGGTGACACCCACCGGA  
GGATGATGGCGAGAAGTCGGAT

AGCGGACCGACGCGTACGCGGCCGCTCGAG - GFP Tag - GTTTAA



[View online »](#)

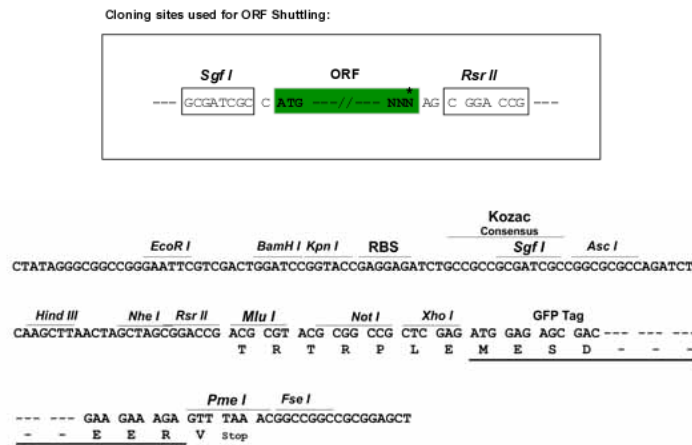
**Protein Sequence:** >RG217378 representing NM\_198969  
Red=Cloning site Green=Tags(s)

MCHKNGFPQEGGITAAFLQKRKLRLSKNHRPARAKVTEHVRGTRPGRATAGPAASTRAAGSLFFDRWGNR  
 GPAGCRGSSHLPQQLKFTTSDSCDRIKDEFQLLQAQYHSLKLECDKLAASEKSEMQRHYVMYEMSYGLNI  
 EMHKQAEIVKRLNGICAQVLPYLSQEHQQVVLGAIERAKQVTAPELNSIIRQQLQAHQLSQLQALALPLT  
 PLPVGLQPPSLPAVSAGTGLLSLSALGSQAHLKEDKNGHGDGTHQEDDGEKSD

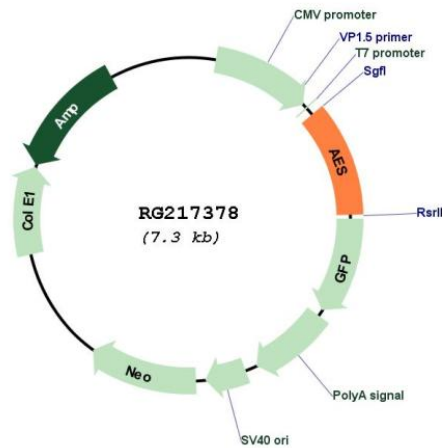
SGPTRRRLE - GFP Tag - V

**Restriction Sites:** SgfI-RsrII

**Cloning Scheme:**



**Plasmid Map:**



**ACCN:** NM\_198969

**ORF Size:** 792 bp

|                               |  |
|-------------------------------|--|
| <b>OTI Disclaimer:</b>        | The molecular sequence of this clone aligns with the gene accession number as a point of reference only. However, individual transcript sequences of the same gene can differ through naturally occurring variations (e.g. polymorphisms), each with its own valid existence. This clone is substantially in agreement with the reference, but a complete review of all prevailing variants is recommended prior to use. <a href="#">More info</a>   |
| <b>OTI Annotation:</b>        | This clone was engineered to express the complete ORF with an expression tag. Expression varies depending on the nature of the gene.   |
| <b>Components:</b>            | The ORF clone is ion-exchange column purified and shipped in a 2D barcoded Matrix tube containing 10ug of transfection-ready, dried plasmid DNA (reconstitute with 100 ul of water).   |
| <b>Reconstitution Method:</b> | <ol style="list-style-type: none"><li>1. Centrifuge at 5,000xg for 5min.</li><li>2. Carefully open the tube and add 100ul of sterile water to dissolve the DNA.</li><li>3. Close the tube and incubate for 10 minutes at room temperature.</li><li>4. Briefly vortex the tube and then do a quick spin (less than 5000xg) to concentrate the liquid at the bottom.</li><li>5. Store the suspended plasmid at -20°C. The DNA is stable for at least one year from date of shipping when stored at -20°C.</li></ol>                        |
| <b>RefSeq:</b>                | <a href="#">NM_198969.1</a> , <a href="#">NP_945320.1</a>  |
| <b>RefSeq Size:</b>           | 1754 bp  |
| <b>RefSeq ORF:</b>            | 795 bp   |
| <b>Locus ID:</b>              | 166  |
| <b>UniProt ID:</b>            | <a href="#">Q08117</a>   |
| <b>Cytogenetics:</b>          | 19p13.3  |
| <b>Protein Families:</b>      | Druggable Genome, Transcription Factors  |
| <b>Gene Summary:</b>          | The protein encoded by this gene is similar in sequence to the amino terminus of Drosophila enhancer of split groucho, a protein involved in neurogenesis during embryonic development. The encoded protein, which belongs to the groucho/TLE family of proteins, can function as a homooligomer or as a heterooligomer with other family members to dominantly repress the expression of other family member genes. Three transcript variants encoding different isoforms have been found for this gene. [provided by RefSeq, Jul 2008] |