

Product datasheet for **RG217363**

PRDM1 (NM_001198) Human Tagged ORF Clone

Product data:

Product Type:	Expression Plasmids
Product Name:	PRDM1 (NM_001198) Human Tagged ORF Clone
Tag:	TurboGFP
Symbol:	PRDM1
Synonyms:	BLIMP1; PRDI-BF1
Mammalian Cell Selection:	Neomycin
Vector:	pCMV6-AC-GFP (PS100010)
E. coli Selection:	Ampicillin (100 ug/mL)



[View online »](#)

ORF Nucleotide
Sequence:

>RG217363 representing NM_001198
Red=Cloning site Blue=ORF Green=Tags(s)

TTTTGTAATACGACTCACTATAGGGCGGCCGGGAATTCGTCGACTGGATCCGGTACCGAGGAGATCTGCC
GCC**CGGATCGCC**

ATGTTGGATATTTGCTTGAAAAACGTGTGGGTACGACCTGGCTGCCCCCAAGTGTAACTCCAGCACTG
TGAGGTTTCAGGGATTGGCAGAGGGGACCAAGGGGACCATGAAAAATGGACATGGAGGATGCGGATATGAC
TCTGTGGACAGAGGCTGAGTTTGAAGAGAAGTGTACATACATTGTGAACGACCACCCCTGGGATTCTGGT
GCTGATGGCGGTACTTCGGTTCAGGCGGAGGCATCCTTACCAAGGAATCTGCTTTTCAAGTATGCCACCA
ACAGTGAAGAGGTTATTGGAGTGATGAGTAAAGAATACATACCAAGGGCACACGTTTTGGACCCCTAAT
AGGTGAAATCTACACCAATGACACAGTTCCTAAGAACGCCAACAGGAAATATTTTTGGAGGATCTATTCC
AGAGGGGAGCTTACCACCTTCATTGACGGCTTAAATGAAGAGAAAAGCAACTGGATGCGCTATGTGAATC
CAGCACACTCTCCCGGGAGCAAAACCTGGCTGCGTGTGACAGACGGGATGAACATCTACTTCTACACCAT
TAAGCCCATCCCTGCCAACCCAGGAATCTTGTGTGGTATTGTGCGGACTTTGCAGAAAGGCTTCACTAC
CCTTATCCCGGAGAGCTGACAATGATGAATCTCACACAAACACAGAGCAGTCTAAAGCAACCGAGCACTG
AGAAAAATGAACTCTGCCCAAAGAAATGTCCCAAAGAGAGAGTACAGCGTGAAAGAAATCCTAAAAATTGGA
CTCCAACCCCTCCAAAGGAAAGGACCTCTACCGTTCTAACATTTACCCCTCACATCAGAAAAGGACCTC
GATGACTTTAGAAGACGTGGGAGCCCCGAAATGCCCTTCTACCCTCGGGTCGTTTACCCCATCCGGGCC
CTCTGCCAGAAGACTTTTTGAAAGCTTCCCTGGCTACGGGATCGAGAGACCCACGTACATCACTCGCTC
CCCCATTCATCTCCACCACTCCAAGCCCTCTGCAAGAAGCAGCCCGACCAAAGCTCAAGAGCTCC
AGCCCTCACAGCAGCCCTGGGAATACGGTGTCCCTGTGGGCCCGGCTCTCAAGAGCACCGGGACTCT
ACGTTACTTGAACCGTCTACGGCACGGAGGTTTGGGCTCTACCCTGGCTACGCAACCCCTGCCCA
CCTCCCGCCAGCTTTCATCCCTCGTACAACGCTCACTACCCCAAGTTCCTCTTGGCCCCCTACGGCATG
AATTGTAATGGCCTGAGCGCTGTGAGCAGCATGAATGGCATCAACAACCTTTGGCCTCTTCCCGAGGCTGT
GCCCTGTCTACAGCAATCTCCTCGTGGGGGACGCTGCCCCACCCCATGCTCAACCCCACTTCTCTCC
GAGCTCGTGCCTCAGATGGAGCCCGAGGTTGCTCCAGCCGGAGCATCCAGGGAGGTTGCTTGTCCCG
GCGCCCCACAGTGCCTTCTCTTACCAGGGGCCGCGCCAGCATGAAGGACAAGGCTGTAGCCCCACAA
GCGGGTCTCCACGGCGGAACAGCCGCCACGGCAGAACATGTGGTGCAGCCCAAAGCTACCTCAGCAGC
GATGGCAGCCCCAGCAGCGACGAAGCCATGAATCTCATTAAAAACAAAAGAAACATGACCGCTACAAG
ACCCTTCCCTACCCGCTGAAGAAGCAGAACGGCAAGATCAAGTACGAATGCAACGTTTGCGCCAAGACTT
TCGGCCAGCTCTCCAATCTGAAGTCCACCTGAGAGTGCACAGTGGAGAACGGCCTTCAAATGTCAGAC
TTGCAACAAGGGCTTTACTCAGCTCGCCACCTGCAGAAACACTACCTGGTACACACGGGAGAAAAGCCA
CATGAATGCCAGGTCTGCCACAAGAGATTTAGCAGCACCAGCAATCTCAAGACCCACCTGCGACTCCATT
CTGGAGAGAAACCATACCAATGCAAGGTGTGCCCTGCCAAGTTCACCCAGTTTGTGCACCTGAAACTGCA
CAAGCGTCTGCACACCCGGGAGCGGCCCAAGTGTCCAGTGCACACAAGAACTACATCCATCTGT
AGCCTCAAGGTTACCTGAAAGGAACTGCGCTGCGGCCCGGCGCTGGGCTGCCCTTGAAGATCTGA
CCCGAATCAATGAAGAAATCGAGAAGTTTGACATCAGTGACAATGCTGACCGCTCGAGGACGTGGAGGA
TGACATCAGTGTGATCTGTAGTGGAGAAGAAATCTGGCCGTGGTCAGAAAAGAGAAAAGAAAGAAAT
GGCCTGAAAGTGTCTTTGCAAAGAAACATGGGAATGGACTCCTCTCCTCAGGGTGCAGCCTTTATGAGT
CATCAGATCTACCCCTCATGAAGTTGCCTCCAGCAACCCACTACCTCTGGTACCTGTAAGGTCAAACA
AGAAACAGTTGAACCAATGGATCT

AG**CGGACCG**ACGCGTACGCGGCCGCTCGAG - GFP Tag - GTTTAA

Protein Sequence: >RG217363 representing NM_001198
Red=Cloning site Green=Tags(s)

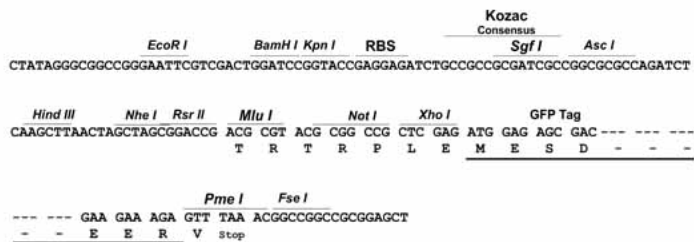
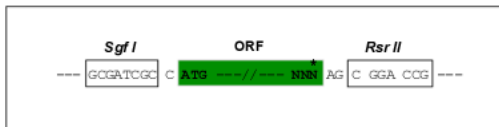
MLDICLEKRVGTTLAAPKCNSSTVRFQGLAEGTKGTMKMDMEDADMTLWTEAEFEKCTYIVNDHPWDSG
ADGGTSVQAEASLPRNLLFKYATNSEEVIGVMSKEYIPKGTRFGPLIGEITYTNDTPKNNRKYFWRIYS
RGELHHFIDGFNEEKSNWMRYVNPAAHSPREQNLAAQNGMNIYFYTIKPIANQELLVWYCRDFAERLHY
PYPGELTMMNLTQTQSSLKQPSTEKNELCPKNVPKREYSVKEILKLDNSPSKGDLYRSNISPLTSEKDL
DDFRRRGSPMPFYPRVVYPIRAPLPEDFLKASLAYGIERPTYITRSPISSTTPSPSARSSPDQSLKSS
SPHSSPGNTVSPVPGSQEHRDSYAYLNASYGTEGLGSYPGYAPLPHLPPAFIPSYNAHYPKFLLPPYGM
NCNGLSAVSSMNGINNFGLFPRLCPVYSNLLGGGSLPHMPLNPTSLPSSLPDGDARRLLQPEHPREVLVP
APHSASFSTGAAASMKDKACSPTSGSPTAGTAATAEHVVQPKATSAAMAAPSSDEAMNLIKNNRMTGYK
TLPYPLKKQNGKIKYECNVCAKTFGQLSNLKVHLRVHSGERPFCQTCNKGFTQLAHLQKHVLTHTGKPK
HECQVCHKRFSSSNLKTLLRLHSGEKPYQCKVCPAKFTQFVHLKHLKRLHTRERPHKCSQCHKNYIHLK
SLKVHLKGNCAAPAPGLPLEDLTRINEEIEKFDISDNADRLDVEDDISVISVVEKEILAVVRKEKEET
GLKVSLQRNMGNGLLSSGCSLYESSDLPLMKLPPSNPLPLVPVKVKQETVEPMDP

SGPTRTRRLE - GFP Tag - V

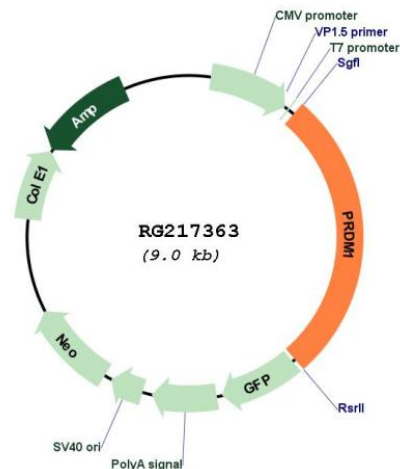
Restriction Sites: Sgfl-RsrII

Cloning Scheme:

Cloning sites used for ORF Shuttling:



Plasmid Map:



ACCN: NM_001198

ORF Size: 2367 bp

OTI Disclaimer: Due to the inherent nature of this plasmid, standard methods to replicate additional amounts of DNA in *E. coli* are highly likely to result in mutations and/or rearrangements. Therefore, OriGene does not guarantee the capability to replicate this plasmid DNA. Additional amounts of DNA can be purchased from OriGene with batch-specific, full-sequence verification at a reduced cost. Please contact our customer care team at custsupport@origene.com or by calling 301.340.3188 option 3 for pricing and delivery.

The molecular sequence of this clone aligns with the gene accession number as a point of reference only. However, individual transcript sequences of the same gene can differ through naturally occurring variations (e.g. polymorphisms), each with its own valid existence. This clone is substantially in agreement with the reference, but a complete review of all prevailing variants is recommended prior to use. [More info](#)

OTI Annotation: This clone was engineered to express the complete ORF with an expression tag. Expression varies depending on the nature of the gene.

Components: The ORF clone is ion-exchange column purified and shipped in a 2D barcoded Matrix tube containing 10ug of transfection-ready, dried plasmid DNA (reconstitute with 100 ul of water).

Reconstitution Method:

1. Centrifuge at 5,000xg for 5min.
2. Carefully open the tube and add 100ul of sterile water to dissolve the DNA.
3. Close the tube and incubate for 10 minutes at room temperature.
4. Briefly vortex the tube and then do a quick spin (less than 5000xg) to concentrate the liquid at the bottom.
5. Store the suspended plasmid at -20°C. The DNA is stable for at least one year from date of shipping when stored at -20°C.

RefSeq: [NM_001198.4](#)

RefSeq Size: 5165 bp

RefSeq ORF: 2478 bp

Locus ID: 639

UniProt ID: [Q75626](#)

Cytogenetics: 6q21

Protein Families: Transcription Factors

Gene Summary: This gene encodes a protein that acts as a repressor of beta-interferon gene expression. The protein binds specifically to the PRDI (positive regulatory domain I element) of the beta-IFN gene promoter. Transcription of this gene increases upon virus induction. Two alternatively spliced transcript variants that encode different isoforms have been reported. [provided by RefSeq, Jul 2008]