

## Product datasheet for **RG217361**

### PPP2R5C (NM\_178587) Human Tagged ORF Clone

#### Product data:

Product Type:	Expression Plasmids
Product Name:	PPP2R5C (NM_178587) Human Tagged ORF Clone
Tag:	TurboGFP
Symbol:	PPP2R5C
Synonyms:	B56G; B56gamma; PR61G
Mammalian Cell Selection:	Neomycin
Vector:	pCMV6-AC-GFP (PS100010)
E. coli Selection:	Ampicillin (100 ug/mL)



[View online »](#)

**ORF Nucleotide Sequence:**

>RG217361 representing NM\_178587  
 Red=Cloning site Blue=ORF Green=Tags(s)

TTTTGTAATACGACTCACTATAGGGCGGCCGGGAATTCGTGCGACTGGATCCGGTACCGAGGAGATCTGCC  
 GCC**CGCATCGCC**

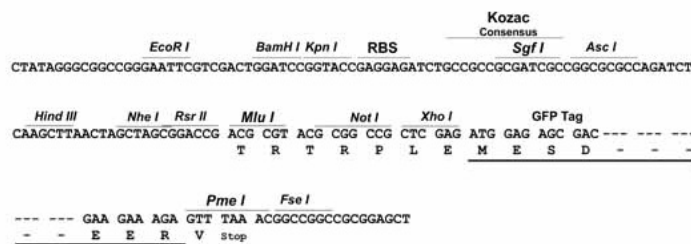
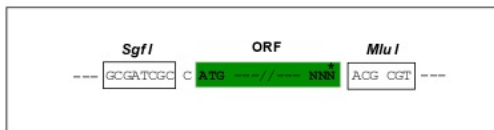
ATGTTGACATGTAATAAAGCGGGCAGCAGGATGGTGGTGGATGCGGCCAACTCCAATGGGCCTTTCCAGC  
 CCGTGGTCTTCTCCATATTGAGATGTTCTCTGCTGATCAAGAGAAGCTTTTATCCAGAAGTTACG  
 TCAGTGTTCGCTCCTCTTTGACTTTGTTTCTGATCCACTAAGTGACCTAAAGTGGGAAGGAAGTAAACGA  
 GCTGCTTTAAGTGAATGGTAGAATATATACCCATAATCGGAATGTGATCACAGAGCCTATTTACCCAG  
 AAGTAGTCCATATGTTTGCAGTTAACATGTTTGAACATTACCACCTTCTCCAATCCTACGGGAGCGGA  
 ATTTGACCCGGAGGAAGATGAACCAACGTTAGAAGCAGCCTGGCCTCATCTACAGCTTGTATGAATTT  
 TTCTTAAGATTTTAGAGTCTCCAGATTCCAACCTAATATAGCGAAGAAATATATTGATCAGAAGTTT  
 TATTGCAGCTTTAGAGCTTTTACAGTGAAGATCCTCGGGAGAGAGATTTTCTAAAACCACCCTTCA  
 CAGAATCTATGGGAAATTCCTAGGCTTGAGAGCTTACATCAGAAAACAGATAAATAATATATTTTATAGG  
 TTTATTTATGAAACAGAGCATCATAATGGCATAGCAGAGTTACTGGAAATATTGGGAAGTATAATTAATG  
 GATTTGCCTTACCACTAAAAGAAGAGCACAAGATTTTCTTATTGAAGGTGTTACTACCTTTGCACAAAGT  
 GAAATCTCTGAGTGTCTACCATCCCCAGCTGGCATACTGTGTAGTGCAGTTTTTAGAAAAGGACAGCACC  
 CTCACGGAACCAAGTGGTATGGCACTTCTCAAATACTGGCCAAAGACTCACAGTCCAAAAGAAGTAAATGT  
 TCTTAAACGAATTAGAAGAGATTTTAGATGTCAATTGAACCATCAGAAATTTGTGAAGATCATGGAACCCCT  
 CTTCCGGCAGTTGGCCAAATGTGTCTCCAGCCCACACTCCAGGTGGCAGAGCGAGCTCTCTATTACTGG  
 AATAATGAATACATCATGAGTTTAATCAGTGACAACGCAGCGAAGATTCTGCCCATCATGTTTCCCTTCT  
 TGTACCGCAACTCAAAGACCCATTGGAACAAGACAATACATGGCTTGATATACAACGCCCTCAAGCTCTT  
 CATGGAGATGAACCAAAAAGCTATTTGATGACTGTACACAACAGTTCAAAGCAGAGAAACTAAAAGAGAAG  
 CTAAAAATGAAAGAACCGGAAGAAGCATGGGTTAAAATAGAAAATCTAGCCAAAGCCAATCCCCAGGTAC  
 TAAAAAGAGAATAACA

**ACGCGTACGCGGCCGCTCGAG** - GFP Tag - GTTTAA

**Restriction Sites:  
 Cloning Scheme:**

SgfI-MluI

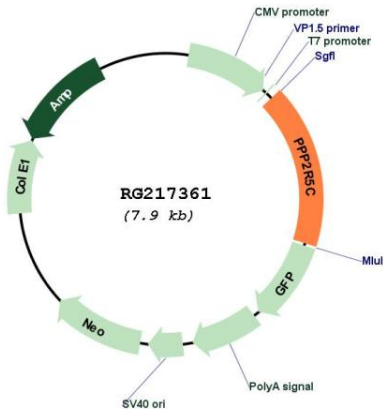
Cloning sites used for ORF Shuttling:



ACCN: NM\_178587  
 ORF Size: 1347 bp

<b>OTI Disclaimer:</b>	The molecular sequence of this clone aligns with the gene accession number as a point of reference only. However, individual transcript sequences of the same gene can differ through naturally occurring variations (e.g. polymorphisms), each with its own valid existence. This clone is substantially in agreement with the reference, but a complete review of all prevailing variants is recommended prior to use. <a href="#">More info</a>
<b>OTI Annotation:</b>	This clone was engineered to express the complete ORF with an expression tag. Expression varies depending on the nature of the gene.
<b>Components:</b>	The ORF clone is ion-exchange column purified and shipped in a 2D barcoded Matrix tube containing 10ug of transfection-ready, dried plasmid DNA (reconstitute with 100 ul of water).
<b>Reconstitution Method:</b>	<ol style="list-style-type: none"><li>1. Centrifuge at 5,000xg for 5min.</li><li>2. Carefully open the tube and add 100ul of sterile water to dissolve the DNA.</li><li>3. Close the tube and incubate for 10 minutes at room temperature.</li><li>4. Briefly vortex the tube and then do a quick spin (less than 5000xg) to concentrate the liquid at the bottom.</li><li>5. Store the suspended plasmid at -20°C. The DNA is stable for at least one year from date of shipping when stored at -20°C.</li></ol>
<b>RefSeq:</b>	<a href="#">NM_178587.3</a>
<b>RefSeq Size:</b>	1586 bp
<b>RefSeq ORF:</b>	1350 bp
<b>Locus ID:</b>	5527
<b>UniProt ID:</b>	<a href="#">Q13362</a>
<b>Cytogenetics:</b>	14q32.31
<b>Protein Families:</b>	Druggable Genome, Phosphatase
<b>Protein Pathways:</b>	Oocyte meiosis, Wnt signaling pathway
<b>Gene Summary:</b>	The product of this gene belongs to the phosphatase 2A regulatory subunit B family. Protein phosphatase 2A is one of the four major Ser/Thr phosphatases, and it is implicated in the negative control of cell growth and division. It consists of a common heteromeric core enzyme, which is composed of a catalytic subunit and a constant regulatory subunit, that associates with a variety of regulatory subunits. The B regulatory subunit might modulate substrate selectivity and catalytic activity. This gene encodes a gamma isoform of the regulatory subunit B56 subfamily. Alternatively spliced transcript variants encoding different isoforms have been identified. [provided by RefSeq, Jul 2008]

Product images:



Circular map for RG217361