

Product datasheet for **RG217343**

CLEC1B (NM_001099431) Human Tagged ORF Clone

Product data:

Product Type: Expression Plasmids
Product Name: CLEC1B (NM_001099431) Human Tagged ORF Clone
Tag: TurboGFP
Symbol: CLEC1B
Synonyms: 1810061113Rik; CLEC2; CLEC2B; PRO1384; QDED721
Mammalian Cell Selection: Neomycin
Vector: pCMV6-AC-GFP (PS100010)
E. coli Selection: Ampicillin (100 ug/mL)
ORF Nucleotide Sequence: >RG217343 representing NM_001099431
 Red=Cloning site Blue=ORF Green=Tags(s)

TTTTGTAATACGACTCACTATAGGGCGGCCGGAATTCGTCGACTGGATCCGGTACCGAGGAGATCTGCC
 GCC**CGATCGCC**

ATGCAGGATGAAGATGGATACATCACCTTAAATATTTAACTCGGAAACCAGCTCTCATCTCCGCTGTCA
 TGCAGCGCAATTACCTACAAGGTGAGAATGAAAATCGCACAGGAAGCTCGCAACAATTAGCAAAGCGCTT
 CTGTCAATATGTGGTAAAACAATCAGAATAAAGGGCACTTTCAAAGTGCATAAATGCAGCCCCTGTGAC
 ACAAATGGAGATATTATGGAGATAGCTGCTATGGTTCTTCAGGCACAACCTAACATGGGAAGAGAGTA
 AGCAGTACTGCACTGACATGAATGCTACTCTCCTGAAGATTGACAACCGAACATTGTGGAGTACATCAA
 AGCCAGGACTCATTTAATTCGTTGGGTCGGATTATCTCGCCAGAAGTCGAATGAGGTCTGGAAGTGGGAG
 GATGGCTCGGTTATCTCAGAAAATATGTTTGTGATTTTTGGAAGATGAAAAGGAAATATGAATTGTGCTT
 ATTTTCATAATGGGAAAATGCACCCTACCTTCTGTGAGAACAAACATTATTTAATGTGTGAGAGGAAGGC
 TGGCATGACCAAGGTGGACCAACTACCT

ACGCGTACGCGGCCGCTCGAG - GFP Tag - GTTTAA

Protein Sequence: >RG217343 representing NM_001099431
 Red=Cloning site Green=Tags(s)

MQDEDGYITLNIKTRKPALISAVMQRNYLQGENENRTGTLQQLAKRQCQYVVKQSELKGTGFKGHCSPCD
 TNWRYYGDSYGFRRHNLWEEKQYCTDMNATLLKIDNRNIVEYIKARTHLIRWVGLSRQKSNEVWKWE
 DGSVISENMFELFDGKGNMNCAYFHNGKMHPFCENKHYLMCERKAGMTKVDQLP

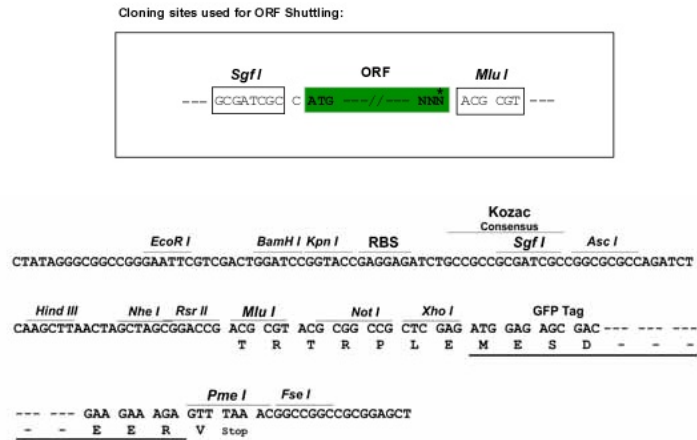
TRTRPLE - GFP Tag - V

Restriction Sites: Sgfl-MluI

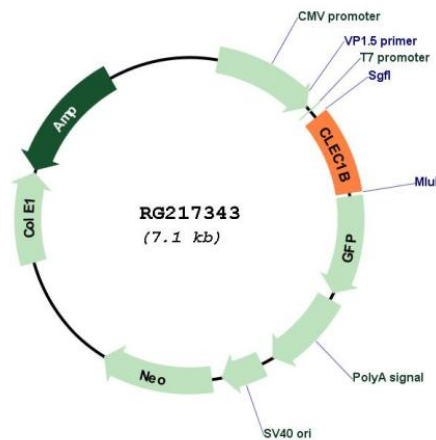


[View online »](#)

Cloning Scheme:



Plasmid Map:



ACCN: NM_001099431

ORF Size: 588 bp

OTI Disclaimer: The molecular sequence of this clone aligns with the gene accession number as a point of reference only. However, individual transcript sequences of the same gene can differ through naturally occurring variations (e.g. polymorphisms), each with its own valid existence. This clone is substantially in agreement with the reference, but a complete review of all prevailing variants is recommended prior to use. [More info](#)

OTI Annotation: This clone was engineered to express the complete ORF with an expression tag. Expression varies depending on the nature of the gene.

Components: The ORF clone is ion-exchange column purified and shipped in a 2D barcoded Matrix tube containing 10ug of transfection-ready, dried plasmid DNA (reconstitute with 100 ul of water).

Reconstitution Method:

1. Centrifuge at 5,000xg for 5min.
2. Carefully open the tube and add 100ul of sterile water to dissolve the DNA.
3. Close the tube and incubate for 10 minutes at room temperature.
4. Briefly vortex the tube and then do a quick spin (less than 5000xg) to concentrate the liquid at the bottom.
5. Store the suspended plasmid at -20°C. The DNA is stable for at least one year from date of shipping when stored at -20°C.

RefSeq: [NM_001099431.1](#), [NP_001092901.1](#)

RefSeq Size: 883 bp

RefSeq ORF: 591 bp

Locus ID: 51266

UniProt ID: [Q9P126](#)

Cytogenetics: 12p13.31-p13.2

Protein Families: Druggable Genome, Transmembrane

Gene Summary: Natural killer (NK) cells express multiple calcium-dependent (C-type) lectin-like receptors, such as CD94 (KLRD1; MIM 602894) and NKG2D (KLRC4; MIM 602893), that interact with major histocompatibility complex class I molecules and either inhibit or activate cytotoxicity and cytokine secretion. CLEC2 is a C-type lectin-like receptor expressed in myeloid cells and NK cells (Colonna et al., 2000 [PubMed 10671229]).[supplied by OMIM, Jan 2011]