

## Product datasheet for **RG217316**

### TP53BP2 (NM\_001031685) Human Tagged ORF Clone

#### Product data:

Product Type:	Expression Plasmids
Product Name:	TP53BP2 (NM_001031685) Human Tagged ORF Clone
Tag:	TurboGFP
Symbol:	TP53BP2
Synonyms:	53BP2; ASPP2; BBP; P53BP2; PPP1R13A
Mammalian Cell Selection:	Neomycin
Vector:	pCMV6-AC-GFP (PS100010)
E. coli Selection:	Ampicillin (100 ug/mL)
ORF Nucleotide Sequence:	>RG217316 representing NM_001031685 Red=Cloning site Blue=ORF Green=Tags(s)

TTTTGTAATACGACTCACTATAGGGCGGCCGGAATTCGTCGACTGGATCCGGTACCGAGGAGATCTGCC  
GCC**CGATCGCC**

ATGCCGATGTTTCTTACCGTGTATCTCAGTAACAATGAGCAGCACTTCACAGAAGTTCAGTTACTCCAG  
AAACAATATGCAGAGACGTGGTGGATCTGTGCAAAGAACCCGGCGAGAGTGATTGCCATTTGGCTGAAGT  
GTGGTGTGGCTCTGAACGTCCAGTTGCGGATAATGAGCGAATGTTTGATGTTCTCAACGATTTGGAAGT  
CAGAGGAACGAAGTTCGTTCTTCTTCGTCATGAACGCCCCCTGGCAGGGACATTGTGAGTGGACCA  
GATCTCAGGATCCAAGTTTAAAAAGAAATGGTGTAAAAGTTCCTGGTGAATATCGAAGAAAGGAGAACGG  
TGTTAATAGTCTAGGATGGATCTGACTCTTGCTGAACCTCAGGAAATGGCATCTCGCCAGCAGCAACAG  
ATTGAAGCCCAGCAACAATTGCTGGCAACTAAGGAACAGCGCTTAAAGTTTTTGAACAACAAGATCAGC  
GACAACAGCAACAAGTTGCTGAGCAGGAGAAAATAAAAGGCTAAAAGAAATAGCTGAGAATCAGGAAGC  
TAAGCTAAAAAAGTGAGAGCACTTAAAGGCCACGTGGAACAGAAAGAGACTAAGCAATGGGAAACTTGTG  
GAGGAAATTGAACAGATGAATAATTTGTTCCAGCAAAAACAGAGGGAGCTCGTCTGGCTGTGTCAAAG  
TAGAAGAAGTACCAGGCAGCTAGAGATGCTCAAGAACGGCAGGATCGACAGCCACCATGACAATCAGTC  
TGCAGTGGCTGAGCTTGATCGCCTCTATAAGGAGCTGCAGCTAAGAAACAATTTGAATCAAGAGCAGAAT  
GCCAAGCTACAACAACAGAGGGAGTGTGTTGAATAAGCGTAATTCAGAAGTGGCAGTCATGGATAAGCGTG  
TTAATGAGCTGAGGGACCGGCTGTGGAAGAAGAAGGCAGCTCTACAGCAAAAAGAAAATCTACCAGTTTC  
ATCTGATGGAATCTTCCCAGCAAGCCGCTCAGCCCCAAGCCGTGTGGCTGCAGTAGGTCCTATATC  
CAGTCGCTACTATGCCTCGGATGCCCTCAAGGCTGAATTGCTGGTGAAGCCAGCCCTGCCGGATGGTT  
CCTTGGTCATTCAGGCTCAGAGGGGCCGATGAAAATACAGACTGCCCAACATGAGATCTGGGCTGC  
TTCACAACTAAAGGCTCTAAAATCCATCCAGTTGCCCTGATTGGAGTCTTCAAATGCAGATCTTTTC  
CCAAGCCAAGGCTCTGCTTCTGTACCTCAAAGCACTGGGAATGCTCTGGATCAAGTTGATGATGGAGAGG  
TTCGCTGAGGGAGAAAGAGAAGAAAGTCCGTTCTCAATGTTTGATGCAGTAGACCAGTCCAATGC  
CCCACCTCTTTGGTACTCTGAGGAAGAACCAGAGCAGTGAAGATATCTTGGCGGATGCTCAGGTTGCA



[View online »](#)

AATAAAAATGTGGCTAAAGTACCACCTCCTGTTCTACAAAACAAAACAGATTAATTTGCCTATTTTG  
 GACAAACTAATCAGCCACCTTCAGACATTAAGCCAGACGGAAGTTCTCAGCAGTTGTCAACAGTTGTTCC  
 GTCCATGGGAACATAACCAAAACCCAGCAGGGCAGCAGCCGAGAGTGTCTATCTCCAGCATACCTTCG  
 GTTGGCCAAGACCAGACCCTTTCTCCAGGTTCTAAGCAAGAAAGTCCACCTGCTGCTGCCGTCGGCCCT  
 TTACTCCCAGCCTTCCAAGACACCTTACTTCCACCTTCAGAAAACCCAGACCGTGGCAGCAAGTTC  
 AATATATTTCCATGTATACGCAACAGCAGGCGCCAGGAAAAAATCCAGCAGGCTGTGCAGAGCGCGTTG  
 ACCAAGACTCATACCAGAGGCCACACTTTTCAAGTGTATATGGTAAGCCTGTAATTGCTGCTGCCGAGA  
 ATCAACAGCAGCACCCAGAGAACATTTATTCCAATAGCCAGGGCAAGCCTGGCAGTCCAGAACCTGAAAC  
 AGAGCCTGTTTCTCAGTTCAGGAGAACCATGAAAACGAAAGAATTCTCGGCCACTCAGCCCAACTAAA  
 TTAAGCTTTTCTATCTAATCCTTACCAGAACAGAGTGTGCTGACCTAGAAGCCTTACGAAAGAAAC  
 TGTCTAACGCACCAAGGCCTCTAAAGAAACGTAGTTCTATTACAGAGCCAGAGGGTCTAATGGGCCAAA  
 TATTCAGAAGCTTTTATATCAGAGGACCACCATAGCGGCCATGGAGACCATCTGTGCCATCATACCCA  
 TCCAAGTCAGCTTCTGTGACTGCCAGCTCAGAAAGCCAGTAGAAATCCAGAATCCATATTTACATGTGG  
 AGCCCGAAAAGGAGGTGGTCTCTCTGGTCTCTGAATCATTGTCCCAGAGGATGTGGGAATGCCAGTAC  
 AGAGAACAGTGACATGCCAGCTCCTTCTCCAGGCCTTGATTATGAGCCTGAGGGAGTCCCAGACAACAGC  
 CCAATCTCCAGAATAACCCAGAGAACCAATCCAGAGGCTCCACATGTGCTTGATGTGTACCTGGAGG  
 AGTACCCTCCATACCCACCCACCACATACCCATCTGGGGAGCCTGAAGGGCCCGGAGAAGACTCGGTGAG  
 CATGCGCCCGCTGAAATCACCGGGCAGGTCTCTCTGCCTCCTGGTAAAAGGACAAAATTGCGTAAAAC  
 GGCTCAGAGCGTATCGCTCATGGAATGAGGGTGAATTCACCCCTTGCTTTACTGCTAGATTCTGCTT  
 TGGAGGGAGAATTTGACCTGTACAGAGAATTTATATGAGGTTGATGACCAAGCCTCCCAATGATGA  
 AGGCATCAGGCTCTTACAATGCTGTGTGTGCAGGCCACACAGAAATCGTTAAGTTCTGGTACAGTTT  
 GGTGTAATGTAATGCTGCTGATAGTGTGATGGATGGACTCCATTACATTGTGCTGCCTCATGTAACAACG  
 TCCAAGTGTGTAAGTTTTGGTGGAGTCAGGAGCCGCTGTTTTGCCATGACCTACAGTGCATGACAGCAG  
 TGCTGCAGATAAGTGCAGGAAAATGGAGGAAGGCTACACTCAGTGTCTCCAATTTCTTATGGAGTTCAG  
 GAGAAGATGGGCATAATGAATAAAGGAGTCATTTATGCGCTTTGGGATTATGAACCTCAGAATGATGATG  
 AGCTGCCCATGAAAGAAGGAGACTGCATGACAATCATCCAGGGGAAGACGAAGATGAAATCGAATGGTG  
 GTGGGCGCGCTTAATGATAAGGAGGATATGTTCCACGTAACCTGCTGGGACTGTACCCAAGAATTA  
 CCAAGACAAGGAGCTTGGCC

ACGCGTACGCGGCCGCTCGAG – GFP Tag – GTTTAA

**Protein Sequence:**

>RG217316 representing NM\_001031685  
 Red=Cloning site Green=Tags(s)

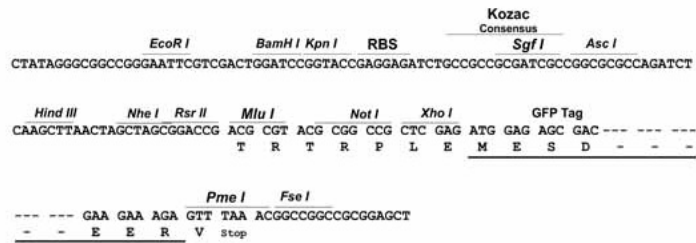
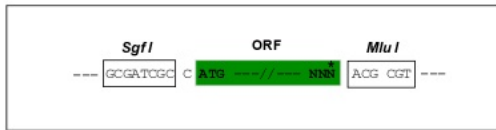
MPMFLTVYLSNNEQHFTEVPVTPETICRDVVDLCKEPGESDCHLAEVWCGSERPVADNERMFDVLQRFGS  
 QRNEVRFLLRHERPPGRDIVSGPRSQDPSLKRNGVKVPGEYRRKENGVNSPRMDLTLAELQEMASRQQQ  
 IEAQQLLATKEQRLKFLKQDDQRQQQVAEQEKLKRLKEIAENQEAKLKVRALKGHVEQKRLSNGKLV  
 EEIEQMNNLFQKQRELVLAVSKVEELTRQLEMLKNGRIDSHHDNQSVAELDRLYKELQLRNKLNQEON  
 AKLQQRECLNKRNSEVAVMDKRVNELRDRLWKKKAALQKQENLPVSSDGNLPQQAASAPSRVAAVGPYI  
 QSSTMPRMPSPPELLVKPALPDGSLVIQASEGPMKIQTLPNMRSGAASQTKGSKIHPVGPDWSPSNADLF  
 PSQGSASVPQSTGNALDQVDDGEVPLREKEKVRPF SMFDAVDQSNAPPSFGTLRKNQSSDILRDAQVA  
 NKNVAKVPPPVPKPKQINLPYFGQTNQPPSDIKPDGSSQQLSTVVPVSMGTGPKPAGQQPRVLLSPSIPS  
 VGQDQTLSPGSKQESPPAAAVRPFQPSKDTLLPPFRKPQTVAASSIYSMTQQQAPGKNFQQAVQSAL  
 TKTHTRGPHFSSVYGKPIAAAQNNQHPENIYSNSQKPGSPEPETEPVSSVQENHENERIPRPLSPTK  
 LLPFLSNPYRNQSDADLEALRKKLSNAPRPLKKRSSITEPEGPNPNIQKLLYQRTTIAAMETISVPSYP  
 SKSASVTASSESPVEIQNPYLHVEPEKEVVSLVPESLSPEDVGNASTENSMPAPSPGLDYEPGVPDNS  
 PNLQNNPEEPNPEAPHVLDVYLEEYPPYPPYPSGEPGPGEDSVSMRPPEITGQVSLPPGKRTNLRKT  
 GSERIAHGMRVKFNPLALLLDSLEGEFDLVQRIIYEVDPSLPNDEGITALHNAVCAHGTEIVKFLVQF  
 GVNVAADSDGWTPHCAASCNNVQVCKFLVESGAAVFAMTYSMQTAADKCEEMEEGYTQCSQFLYGVQ  
 EKMGMNKGVIYALWDYEPQNDDELPMKEGDCMTIIHREDEDEIEWWWARLNDKEGYVPRNLLGLYPRIK  
 PRQRSLA

TRTRPLE – GFP Tag – V

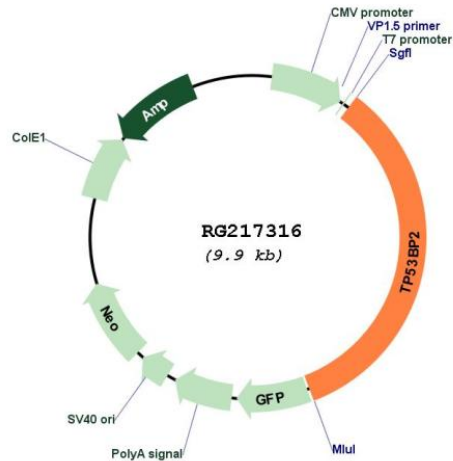
Restriction Sites: SgfI-MluI

Cloning Scheme:

Cloning sites used for ORF Shuttling:



## Plasmid Map:



ACCN: NM\_001031685

ORF Size: 3402 bp

OTI Disclaimer: The molecular sequence of this clone aligns with the gene accession number as a point of reference only. However, individual transcript sequences of the same gene can differ through naturally occurring variations (e.g. polymorphisms), each with its own valid existence. This clone is substantially in agreement with the reference, but a complete review of all prevailing variants is recommended prior to use. [More info](#)

OTI Annotation: This clone was engineered to express the complete ORF with an expression tag. Expression varies depending on the nature of the gene.

Components: The ORF clone is ion-exchange column purified and shipped in a 2D barcoded Matrix tube containing 10ug of transfection-ready, dried plasmid DNA (reconstitute with 100 ul of water).

Reconstitution Method:

1. Centrifuge at 5,000xg for 5min.
2. Carefully open the tube and add 100ul of sterile water to dissolve the DNA.
3. Close the tube and incubate for 10 minutes at room temperature.
4. Briefly vortex the tube and then do a quick spin (less than 5000xg) to concentrate the liquid at the bottom.
5. Store the suspended plasmid at -20°C. The DNA is stable for at least one year from date of shipping when stored at -20°C.

RefSeq: [NM\\_001031685.1](#), [NP\\_001026855.1](#)

RefSeq Size: 4670 bp

RefSeq ORF: 3405 bp

Locus ID: 7159

UniProt ID: [Q13625](#)

Cytogenetics: 1q41

**Protein Families:** Druggable Genome

**Gene Summary:** This gene encodes a member of the ASPP (apoptosis-stimulating protein of p53) family of p53 interacting proteins. The protein contains four ankyrin repeats and an SH3 domain involved in protein-protein interactions. It is localized to the perinuclear region of the cytoplasm, and regulates apoptosis and cell growth through interactions with other regulatory molecules including members of the p53 family. Multiple transcript variants encoding different isoforms have been found for this gene. [provided by RefSeq, Jul 2008]