

Product datasheet for **RG217315**

ZNF3 (NM_017715) Human Tagged ORF Clone

Product data:

Product Type:	Expression Plasmids
Product Name:	ZNF3 (NM_017715) Human Tagged ORF Clone
Tag:	TurboGFP
Symbol:	ZNF3
Synonyms:	A8-51; HF.12; KOX25; PP838; Zfp113
Mammalian Cell Selection:	Neomycin
Vector:	pCMV6-AC-GFP (PS100010)
E. coli Selection:	Ampicillin (100 ug/mL)
ORF Nucleotide Sequence:	>RG217315 representing NM_017715 Red=Cloning site Blue=ORF Green=Tags(s)

TTTTGTAATACGACTCACTATAGGGCGGCCGGAATTCGTCGACTGGATCCGGTACCGAGGAGATCTGCC
GCC**CGATCGCC**

ATGGAACCTCAGGCTGATCTCGTATCTCAGGAACCTCAGGCCCTGCTTGACAGTGCTCTTCTTTCAAAG
TTCCTGCCTTTCCGACAAGGACAGCCTGGGGATGAGATGTTGGCGGCTGCGCTCTAAAGCCAAAGTC
CCAGGAGCTGGTAACCTTTGAGGATGTAGCTGTGTACTTCATCCGGAAGGAGTGAAGCGTTTGAACCT
GCTCAGAGGGACCTCTATAGAGATGTGATGCTGGAGAATTACGGGAATGTGTTCTACTGGATCGTGAGA
CCAGGACTGAAAATGATCAAGAAATTTCTGAAGACACAAGATCACATGGGGTCTACTGGGAAGATTTCA
AAAGGATATTTCTCAGGGTCTCAAGTTAAAGAAGCCTATGAACGAGAAGTCAGTCTGAAAAGGCCGCTG
GGAACTCCCCTGGAGAAAGACTGAACAGGAAAATGCCAGATTTTGGTCAAGTGACAGTTGAGGAGAAGC
TAACCCCAAGGGAGAGAGAAGCGAGAAAATATAATGATTTTGGGAACAGCTTCACTGTGAATTTCAAACCT
TATCTCACATCAGAGACTCCCCGTGGGAGACAGACCCCAATAGTGTGATGAATGTAGCAAGAGCTTAAAT
CGAACTTCAGACCTTATCAACATCAGAGAATCCACACTGGGAAAAGCCCTATGAATGTAAATGAGTGTG
GGAAGGCCTTCAGCCAGAGCTCACACCTTATTCAGCATCAGAGAATCCACACTGGGAAAACCTTATGA
ATGTAGTGATTGTGGAAAACCTTCAGCTGTAGCTCTGCCCTCATTCTGCATCGGAGGATCCACACGGGG
GAGAAAACCTATGAATGTAATGAGTGTGGGAAGACCTTCAGCTGGAGCTCCACCCTCACCCACCATCAGA
GAATCCACACTGGTGAGAAACCCTACGCCTGCAATGAATGTGGGAAGGCCTTCAGCAGGAGCTCAACCCT
TATTCACCATCAGAGAATCCACACTGAAGCTCTTCCACATTCGTTACACTGATAAGGCTTCTCCCCAGT
GTGGATCCGATAGTGACGAATGAGGCTGCCTTTCCCGCTGAAAGCCTTGCACAATCTTTCAGCTGATAT
GGCGCCTCTTCTGTGTCATTCTCTGATGTTTAAAGAGTTC

ACGCGTACGCGGCCGCTCGAG - GFP Tag - GTTTAA



[View online »](#)

Protein Sequence: >RG217315 representing NM_017715
 Red=Cloning site Green=Tags(s)

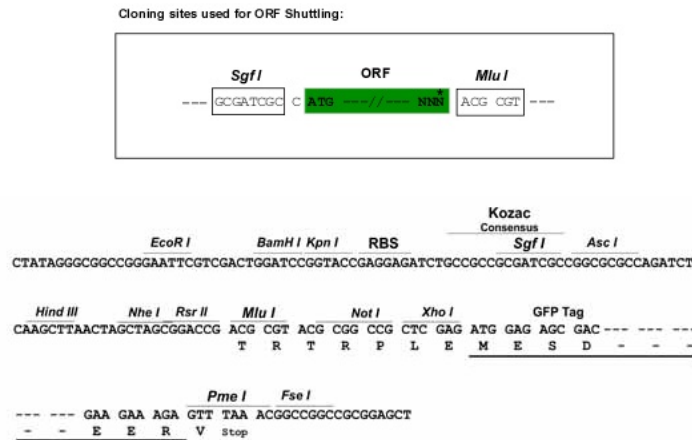
METQADLVSQEPQALLDSALLSKVPAFSDKDSLGDMLAAALLKAKSQELVTFEDVAVYFIRKEWKRLPE
 AQRDLYRDVMLENYGNVFLDRETRTENDQEISEDTRSHGVLLGRFQKDISQGLKFKAYEREVSLKRPL
 GNSPGERLNRKMPDFGQVTVEEKLTPRGERSEKYNDFGNSFTVNSNLISHQRLPVGDRPHKCDECSKSFN
 RTSDLIQHQRIHTGEKPYECNECGKAFSQSSHLIQHQRIHTGEKPYECSDCGKTFSCSSALILHRRIHTG
 EKPYECNECGKTFWSSTLTHHQRIHTGEKPYACNECGKAFSRSTLIHHQRIHTEALPTFVTLIRLLPS
 VDPIVTNEAAFPASLATIFALIWRLFVHSLMFKKV

TRTRPLE - GFP Tag - V

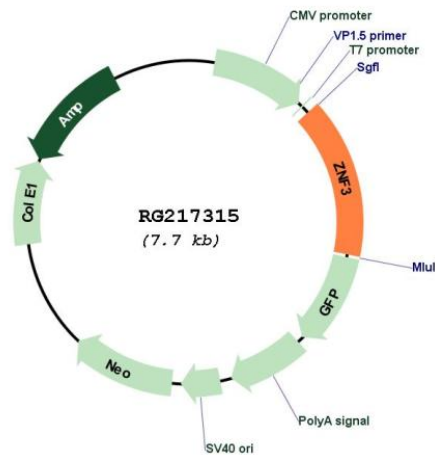
Restriction Sites:

SgfI-MluI

Cloning Scheme:



Plasmid Map:



ACCN:

NM_017715

ORF Size:	1161 bp
OTI Disclaimer:	The molecular sequence of this clone aligns with the gene accession number as a point of reference only. However, individual transcript sequences of the same gene can differ through naturally occurring variations (e.g. polymorphisms), each with its own valid existence. This clone is substantially in agreement with the reference, but a complete review of all prevailing variants is recommended prior to use. More info
OTI Annotation:	This clone was engineered to express the complete ORF with an expression tag. Expression varies depending on the nature of the gene.
Components:	The ORF clone is ion-exchange column purified and shipped in a 2D barcoded Matrix tube containing 10ug of transfection-ready, dried plasmid DNA (reconstitute with 100 ul of water).
Reconstitution Method:	<ol style="list-style-type: none">1. Centrifuge at 5,000xg for 5min.2. Carefully open the tube and add 100ul of sterile water to dissolve the DNA.3. Close the tube and incubate for 10 minutes at room temperature.4. Briefly vortex the tube and then do a quick spin (less than 5000xg) to concentrate the liquid at the bottom.5. Store the suspended plasmid at -20°C. The DNA is stable for at least one year from date of shipping when stored at -20°C.
RefSeq:	NM_017715.1 , NP_060185.1
RefSeq Size:	1625 bp
RefSeq ORF:	396 bp
Locus ID:	7551
UniProt ID:	P17036
Cytogenetics:	7q22.1
Domains:	KRAB, zf-C2H2
Protein Families:	Transcription Factors
Gene Summary:	Involved in cell differentiation and/or proliferation.[UniProtKB/Swiss-Prot Function]