

Product datasheet for **RG217308**

DEGS2 (NM_206918) Human Tagged ORF Clone

Product data:

Product Type:	Expression Plasmids
Product Name:	DEGS2 (NM_206918) Human Tagged ORF Clone
Tag:	TurboGFP
Symbol:	DEGS2
Synonyms:	C14orf66; DES2; FADS8
Mammalian Cell Selection:	Neomycin
Vector:	pCMV6-AC-GFP (PS100010)
E. coli Selection:	Ampicillin (100 ug/mL)
ORF Nucleotide Sequence:	>RG217308 representing NM_206918 Red=Cloning site Blue=ORF Green=Tags(s)

TTTTGTAATACGACTCACTATAGGGCGGCCGGAATTCGTCGACTGGATCCGGTACCGAGGAGATCTGCC
GCC**CGATCGCC**

ATGGGCAACAGCGCGAGCCGAGCGACTTCGAGTGGGTCTACACCGACCAGCCGCACACGCAGCGGCGCA
AGGAGATACTGGCCAAGTACCCGGCCATCAAGGCCCTGATGCGGCCAGACCCGCGCCTCAAGTGGGCGGT
GCTGGTGTGGTGTGGTGCAGATGCTGACCTGCTGGCTGGTGC GCGGGCTGGCCTGGCGCTGGCTGCTG
TTCTGGGCTACGCCTTTGGTGGCTGCGTGAACCACTCGCTGACGCTGGCCATCCAGACATCTCGACA
ACGCGGCCTTCGGCACGGCCGTGCGGCACGCAACCGCTGGCTGGCCGTGTTTCGCCAACCTGCCCGTGGG
TGTGCCCTACGCCGCTCCTTCAAGAAGTACCAGTGGACCACCACCGCTACCTGGGCGGCAGCGGCTG
GACGTGGACGTGCCACGCGTCTGGAGGGCTGGTCTTCTGACGCCCCGCCGCAAGCTGCTCTGGCTGG
TGCTGCAGCCCTTCTTCTACTACTACGGCCGCTCTGCGTCCACCCCAAGGCCGTGACCCGCATGGAGGT
GCTCAACACGCTGGTGCAGCTGGCGGCCGACCTGGCCATCTTTGCCCTTTGGGGCTCAAGCCCGTGGTC
TACCTGCTGGCCAGCTCCTTCTGGCCCTGGCCCTGCACCCATCTCGGGCCACTTCGTGGCCGAGCACT
ACATGTTCTCAAGGGCCAGGACCTACTCCTACTATGGGCCTCAACTGGATCACCTCAATGTGGG
CTACCAGTGGAGCACCAGACTTCCCCAGCATCCCGGGCTACAACCTGCCGCTGGTGC GGAAGATCGCG
CCCGAGTACTACGACCACCTGCCGAGCACCCTCCTGGTGAAGGTGCTCTGGATTTTGTGTTTGAGG
ACTCCCTGGGGCCCTATGCCAGGTGAAGCGGGGTACAGGCTGGCAAAAGATGGTCTG

AGCGGACCGACGCGTACGCGGCCGCTCGAG - GFP Tag - GTTTAA



[View online »](#)

Protein Sequence: >RG217308 representing NM_206918
 Red=Cloning site Green=Tags(s)

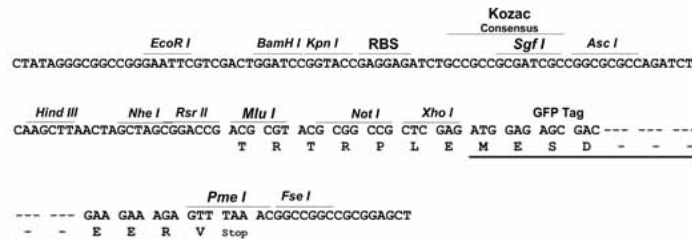
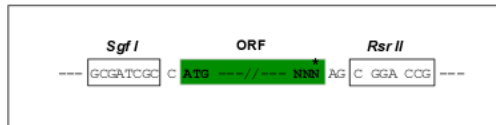
MGNSASRSDFEWVYTDQPHTRRKEILAKYPAIKALMRDPRLKWAFLVVLVQMLTCWLVRGLAWRWLL
 FWAYAFGGCVNHSLLAIHDI SHNAAFGTGRAARNRWLAVFANLPVGVVYAAAFKYYHVDHHRYLGGDGL
 DVDVPTRLLEGWFFCTPARKLLWLVLQPFYSLRPLCVHPKAVTRMEVNLTLVQLAADLAIFALWGLKPVV
 YLLASSFLGLGLHPI SGHFVAEHYMF LKGHETYSYYGPLNWIITFNVGYHVEHDFPSIPGYNLPLVRKIA
 PEYYDHL PQHHSWVKVLWDFVFEDSLGPYARVKRYYRLAKDGL

SGPTRRRLE - GFP Tag - V

Restriction Sites: SgfI-RsrII

Cloning Scheme:

Cloning sites used for ORF Shuttling:



ACCN: NM_206918

ORF Size: 969 bp

OTI Disclaimer: The molecular sequence of this clone aligns with the gene accession number as a point of reference only. However, individual transcript sequences of the same gene can differ through naturally occurring variations (e.g. polymorphisms), each with its own valid existence. This clone is substantially in agreement with the reference, but a complete review of all prevailing variants is recommended prior to use. [More info](#)

OTI Annotation: This clone was engineered to express the complete ORF with an expression tag. Expression varies depending on the nature of the gene.

Components: The ORF clone is ion-exchange column purified and shipped in a 2D barcoded Matrix tube containing 10ug of transfection-ready, dried plasmid DNA (reconstitute with 100 ul of water).

Reconstitution Method:

1. Centrifuge at 5,000xg for 5min.
2. Carefully open the tube and add 100ul of sterile water to dissolve the DNA.
3. Close the tube and incubate for 10 minutes at room temperature.
4. Briefly vortex the tube and then do a quick spin (less than 5000xg) to concentrate the liquid at the bottom.
5. Store the suspended plasmid at -20°C. The DNA is stable for at least one year from date of shipping when stored at -20°C.

RefSeq: [NM_206918.1](#), [NP_996801.1](#)

RefSeq Size: 1434 bp

RefSeq ORF: 972 bp

Locus ID: 123099

UniProt ID: [Q6QHC5](#)

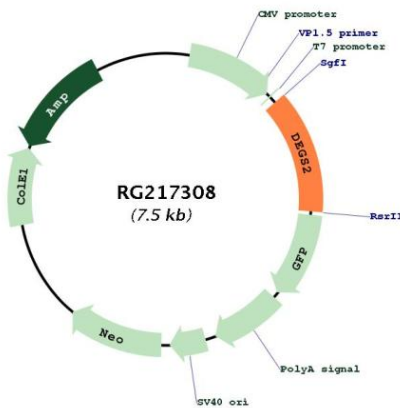
Cytogenetics: 14q32.2

Protein Families: Transmembrane

Protein Pathways: Metabolic pathways, Sphingolipid metabolism

Gene Summary: This gene encodes a bifunctional enzyme that is involved in the biosynthesis of phytosphingolipids in human skin and in other phytosphingolipid-containing tissues. This enzyme can act as a sphingolipid delta(4)-desaturase, and also as a sphingolipid C4-hydroxylase. [provided by RefSeq, Oct 2008]

Product images:



Circular map for RG217308