

## Product datasheet for **RG217291**

### GLI2 (NM\_005270) Human Tagged ORF Clone

#### Product data:

Product Type:	Expression Plasmids
Product Name:	GLI2 (NM_005270) Human Tagged ORF Clone
Tag:	TurboGFP
Symbol:	GLI2
Synonyms:	CJS; HPE9; PHS2; THP1; THP2
Mammalian Cell Selection:	Neomycin
Vector:	pCMV6-AC-GFP (PS100010)
E. coli Selection:	Ampicillin (100 ug/mL)
ORF Nucleotide Sequence:	>RG217291 representing NM_005270 Red=Cloning site Blue=ORF Green=Tags(s)

TTTTGTAATACGACTCACTATAGGGCGGCCGGAATTCGTCGACTGGATCCGGTACCGAGGAGATCTGCC  
GCC**CGATCGCC**

ATGGAGACGTCTGCCTCAGCCACTGCCTCCGAGAAGCAAGAAGCCAAAAGTGGGATCCTGGAGGCCGCTG  
GCTTCCCCGACCCGGGTAAAAAGGCCTCTCCTTTGGTGGTGGCTGCAGCGGCAGCAGCAGCGGTAGCTGC  
CCAAGGAGTGCCGAGCATCTCTTGCCACCATTCCATGCGCCCTACCGATTGACATGCGACACCAGGAA  
GGAAGGTACCATTACGAGCCTCATTCTGTCCACGGTGTGCACGGGCCCTGCCCTCAGCGGCAGCCCTG  
TCATCTCTGACATCTCCTTGATCCGGCTTCCCCGCACCCGGCTGGCCCTGGGGAGTCCCCCTTCAACGC  
CCCCACCCGTACGTGAACCCACATGGAGCACTACCTCCGTTCTGTGCACAGCAGCCACGCTCTCC  
ATGATCTCTGCAGCCAGGGCCCTCAGCCCGCTGATGTGGCCAGGAGCACCTAAGGAGAGGGGACTGT  
TTGGCCTTCTGCTCCAGGCACCACCCCTCAGACTATTACCACCAGATGACCCTCGTGGCAGGCCACCC  
CGCGCCCTACGGGGACCTGCTGATGCAGAGCGGGGGCGCTGCCAGCGCACCCCATCTCCACGACTACCTC  
AACCCCGTGGACGTGTCCGTTTCTCCAGCCCGGGGTGACGCCCGCCTGAGCCGCAAGCGGGCGCTGT  
CCATCTCCCCTCTCAGACGCCAGCCTGGACCTGCAGCGGATGATCCGCACCTCACCAACTCGTAGT  
GGCCTACATCAACAACCTCCGAAGCAGCTCGGCGGCCAGCGGTTCTACGGGCATCTGTACGCGGGTGCC  
CTCAGCCAGCCTTACCTTCCCCACCCCATCAACCCCGTGGCCTACCAGCAGATTCTGAGCCAGCAGA  
GGGGTCTGGGGTACGCTTTGGACACACACCACCCCTGATCCAGCCCTCACCCACCTTCTGGCCAGCA  
GCCCATGGCCCTCACCTCCATCAATGCCACGCCACCCAGCTCAGCAGCAGCAGCAACTGTCTGAGTGAC  
ACCAACCAGAACAAGCAGAGCAGTGAGTCGGCCGTGAGCAGCACCGTCAACCCTGTCCGATTACAAGC  
GCAGCAAGGTCAAGACCGAGCCTGAGGGCTGCGGCCGGCCTCCCTCTGGCGCTGACGCAGGGCCAGGT  
GTCTGGACACGGCTCATGTGGGTGTGCCCTTCCCTCTCCAGGAGCAGCTGGCTGACCTCAAGGAAGAT  
CTGGACAGGGATGACTGTAAGCAGGAGGCTGAGGTGGTATCTATGAGACCAACTGCCACTGGGAAGACT  
GCACCAAGGAGTACGACACCCAGGAGCAGCTGGTGCATCACATCAACAACGAGCAGATCCACGGGGAGAA  
GAAGGAGTTGTGTGCCCTGGCAGGCCTGCACGGGGAGCAGAAGCCCTCAAGGCGCAGTACATGCTG



[View online »](#)

GTGGTGCACATGCGGCGACACACGGGCGAGAAGCCCCACAAGTGCACGTTTCGAGGGCTGCTCGAAGGCC  
 ACTCCCGCTGGAGAACCTGAAGACACACCTGCGGTCCCACACCGGGGAGAAGCCATATGTGTGTGAGCA  
 CGAGGGCTGCAACAAAGCCTTCTCAACGCCTCGGACCGCGCAAGCACCAGAATCGCACCCACTCCAAC  
 GAGAAACCTACATCTGCAAGATCCCAGGCTGCACCAAGAGATACACAGACCCAGCTCTCTCCGGAAGC  
 ATGTGAAAACGGTCCACGGCCAGATGCCACGTACCAAGAAGCAGCGCAATGACGTGCACCTCCGCAC  
 ACCGCTGTCAAAGAGAATGGGGACAGTGAAGCCGCGCAGGAGCCTGGCGGCCAGAGAGCACCAGGGCC  
 AGCAGCACCAGCCAGGCGTGGAGGACTGCCTGCACGTGACAGCCATCAAGACCCAGAGACTCCGGCTGT  
 GTCAGTCCAGCCCCGGGGCCAGTGCCTGTCAGCAGCGAGCCCTCTCTCTGGGAGTGCSCCAACAA  
 TGACAGTGGCGTGGAGATGCCGGGGACGGGCCCCGGGAGCCTGGGAGACCTGACGGCACTGGATGACACA  
 CCCCCAGGGGCCGACACCTCAGCCCTGGCTGCCCCCTCCGCTGGTGGCTCCAGCTGCGCAAAACACATGA  
 CCACCATGCACCGGTTTCGAGCAGCTCAAGAAGGAGAAGCTCAAGTCACTCAAGGATTCTGCTCATGGGC  
 CGGGCCGACTCCACACACGCGGAACACCAAGCTGCCTCCCCTCCCGGAAGTGGTCCATCTGAAAAAC  
 TTCAGTGGCAGTGGGGCGGGGGCCCGGGGCTGCTGCCGAACCCGCGGCTGTCGGAGCTGTCGCGGA  
 GCGAGGTGACCATGCTGAGCCAGCTGCAGGAGCGCCGCGACAGCTCCACCAGCACGGTCACTCGGCCA  
 CACCGTAGCCGCGCTCTCCGGCATCTCCCCTACTTCTCCAGCCGCGCTCCAGCGAGGCCCTCGCCC  
 CTGGGCGCCGGCCGCCCCACAACGCGAGCTCCGCTGACTCCTACGACCCCATCTCCACGGACGCGTCCG  
 GCGCTCGAGCGAGGCCAGCCAGTGCAGCGGGCTCCGGGCTGCTCAACCTCACGCCGGCGCAGCAGTA  
 CAGCCTGCGGGCCAAGTACGCGGCAGCCACTGGCGGCCCCCGCCCACTCCGCTGCCGGGCTGGAGCGC  
 ATGAGCCTGCGGACCAGGCTGGCGCTGCTGGACGCGCCGAGCGCACGCTGCCCGCCGGCTGCCACGCC  
 CACTGGGGCCGCGGCGTGGCAGCGACGGGCCGACCTATGGCCACGGCCACGCGGGGGCTGCGCCCGCCT  
 CCCCCACGAGGCTCCAGGCGGGAGCCAGGCGGGCCAGCAGCCTGTGCGGGCGCCGATGCCCTGTCC  
 CTGCGCGGGTGCAGCGCTTCCACAGCACCCACAACGTGAACCCCGGCCGCTGCCCGCTGTGCCGACA  
 GCGGAGGCTCCGCTGCAGAGCCACCCGAGCAGCGGCGGCTGCGCCGCGGGCCTACTCGCCCCG  
 GCGCCTAGCATCAGCGAGAACGTGGCGATGGAGGCCGTGGCGGCAAGAGTGGACGGCGGGGGCCGAG  
 GCCGACCTGGGGCTGCCGAGGACGACCTGGTGTCCAGACGAGTGGTGCAGTACATCAAGGCGCAGC  
 CCAGTGGCGCTCTGGACGAGGGCACCGGGAGGTGTATCCACGGAAGCACTGGCTTCTGTGACAAACC  
 CAGACTACCCAGCCGGGGCTGCACGGCCAGCGCAGGATGGTGGTGGGACTCCAACGTGGGCCCTCC  
 GCCCTATGCTGGGAGGATGCCAGTTAGGCTTGGGGCGCCCTCCAGCCTGAACAAAAATAACATGCCTG  
 TGCAGTGAATGAGGTGAGTCCGGCACCGTAGACGCCCTGGCCAGCCAGGTGAAGCCTCCACCCTTTCC  
 TCAGGGCAACCTGGCGTGGTGCAGCAGAAGCCTGCCTTTGGCCAGTACCCGGGTACAGTCCGCAAGGC  
 CTACAGGCTAGCCCTGGGGCCCTGGACAGCACGCAGCCACACCTGCAGCCCCGACGCGGAGCCCCCTCC  
 AGGGCATCCCCAGGGTAAACTACATGCAGCAGCTGCGACAGCCAGTGGCAGGCAGCCAGTGTCTGGCAT  
 GACTACCACTATGAGCCCCATGCCTGCTATGGCCAAGTCCACCCCAAGTGCAGCCCCAGCACCATCAGT  
 GGGGCCCTCAACCAGTTCGCCAATCTGCAGCAACATGCCAGCCAAGCCAGGGCATCTGGGGCACCCCTC  
 AGCAGACAGAAGTGGCACCTGACCCACACAGATGGGCAATCGCCACAGGGAAGTGGGGTCCCCGATTC  
 AGCCCTGGCTGGAGTGCCACCACCTCACCCAGTCCAGAGCTACCCACAGCAGAGCCATCACCTGGCAGCC  
 TCCATGAGCCAGGAGGGCTACCACCAGTCCCCAGCCTTCTGCCTGCCCGCCAGCCTGGCTTCATGGAGC  
 CCCAAACAGGCCGATGGGGTGGCTACAGCAGGCTTTGGCCTAGTGCAGCCCCGGCCTCCCCTCGAGCC  
 CAGCCCCACTGGCCGCCACCGTGGGTACGTGCTGTGCAGCAGCAGCTGGCCTACGCCAGGGCCACAGGC  
 CATGCCATGGCTGCCATGCCGTCCAGTCAAGAAACAGCAGAGGCTGTGCCAAGGGAGCGATGGGCAACA  
 TGGGGTGGTGCCTCCCCAGCCCTCCGAGGACGAGGTGGGGCCCCGGACCACAGCATGCTCTACTA  
 CTACGGCCAGATCCACATGTACGAACAGGATGGAGGCTGGAGAACCCTCGGGAGCTGCCAGGTATGCGG  
 TCCCAGCCACCACAGCCACAGGCTGTGAGGACAGCATCCAGCCCCAGCCCTTGCCTCACAGGGGTCA  
 ACCAGGTGTCCAGCACTGTGACTCCCAGCTCCTGGAGGCCCCCCAGATTGACTTCGATGCCATCATGGA  
 TGATGGCGATCACTCGAGTTTGTCTCGGGTGTCTGAGCCCCAGCCTCCTCCACAGCCTCTCCAGAAC  
 TCCTCCCCTCACACCCCCGAAACTCTTGACCTGCCCTCCATCCCCGAGGCATCAGCAACATGG  
 CTGTGGGGACATGAGCTCCATGCTCACCAGCCTCGCCGAGGAGCAAGTTCCTGAACATGATGACC

ACGGGCCGCTCGAG - GFP Tag - GTTTAA

Protein Sequence: >RG217291 representing NM\_005270  
 Red=Cloning site Green=Tags(s)

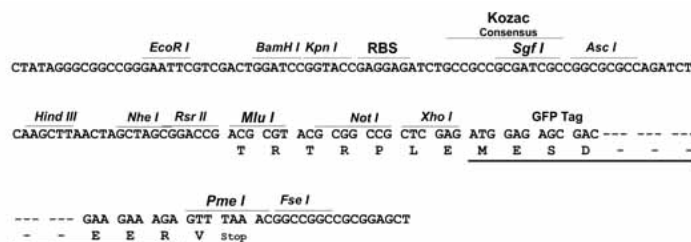
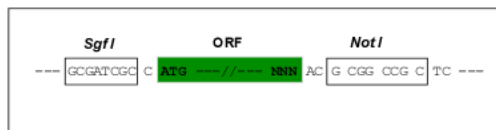
METSASATASEKQEAKSGILEAAGFPDPGKKASPLVVAAAAAAVAAQGVPHLLPPFHAPLPIDMRHQE  
 GRYHYEPHSVHGPHGPPALSGSPVISDI SLIRLSPHPAGPGESPFNAPHYVYNPHMEHYLRSVHSSPTLS  
 MISAARGLSPADVAQEHLKERGLFGLPAPGTTSPDYHQMTLVAGHPAPYGDLLMQSGGAASAPHLHDYL  
 NPVDVSRFSSPRVTPRLSRKRALSI SPLSDASLDLQRMIRTSPNSLVAYINNSRSSSAASGSYGHLSAGA  
 LSPAFTFPHPINPVAYQQILSQQRGLGSAGHTPPLIQPSPTFLAQQPMALTSINATPTQLSSSSNCLSD  
 TNQNKQSSSESAVSSTVNPVAIHKRSKVKTEPEGLRPASPLALTQGOVSGHSGCGCALPLSQEQLADLKED  
 LDRDDCKQEAEEVVIYETNCHWEDCTKEYDTQEQLVHHINNEIHHGEKKEFVCRWQACTREQKPFKAQYML  
 VVHMRRHTGEKPHKCTFEGCSKAYSRLLENLKTHLRSHTGEKPYVCEHEGCNKAFAASDRAKHQNRTHSN  
 EKPYICKIPGCTKRYTDPSSLRKHVKTVHGPDAHVTKQRNDVHLRTPLLKENGDEAGTEPGGPESTEA  
 SSTSQAVEDCLHVRAIKTESSGLCQSSPGAQSSCSSEPSPLGSAPNDSGVEMPGTGPGLGDLTALDDT  
 PPGADTSALAAPSAGGLQLRKHMTTMRFEQLKKEKLSLKDSCSWAGTPHTRNTKLPPLPGSGSILEN  
 FSGSGGGPAGLLPNPRLSELSASEVTMLSQLQERRDSSTSTVSSAYTVRRSSGIPYFSSRRSSEASP  
 LGAGRPHNASSADSYDPISTDAARRSSEASQCSGSGLLNLTPAQYSLRAKYAAATGGPPPTPLPGLER  
 MSLRTRLALLDAPERTLPAGCPRPLGPRRSGDPTYGHHAGAAPAFPHAPGGGARRASDPVRRPDALS  
 LPRVQRFHSTHNVPGLPPCADRRGLRLQSHPSTDGGLARGAYSPPPSISENVAMEA VAAAGVDGAGPE  
 ADLGLPEDDLVLPDDVVQYIKAHASGALDEGTGQVYPTSTGSDNPRLPSPGLHQRRMVAADSNVGPS  
 APMLGGCQLGFGAPSSLNKNMNPVQWNEVSSGTVDALASQVKPPFPQGNLAVVQKPAFGQYYPGYSQGG  
 LQASPGGLDSTQPHLQPRSGAPSQGIPRVNYMQQLRQPVAGSQCPGMTTMSPHACYGQVHPQLSPSTIS  
 GALNQFPQSCSNMPAKPGHLGHPQQTEVAPDPTTMGNRHRELGVPSALAGVPPPHVQSYPPQSHHLAA  
 SMSQEGYHQVPSLLPARQPGFMEPQTGPMGVATAGFGLVQPRPPEPSPTRGRHRGVRAVQQQLAYARATG  
 HAMAAMPSSQETA EAVPKGAMGNMGSVPPQPPQDAGGAPDHSMLYYGQIHMIEQDGGLENL GSCQVMR  
 SQPPQPACQDSIQPQLPSPGVNQVSSVDSQLLEAPQIDFADMDGDHSSLFSGALSPSLLHLSLQSN  
 SSRLTTPRNSLTLPSIPAGISNMAVGDMSMLTSLAEEKFLNMMT

TRPLE - GFP Tag - V

Restriction Sites: SgfI-NotI

Cloning Scheme:

Cloning sites used for ORF Shuttling:

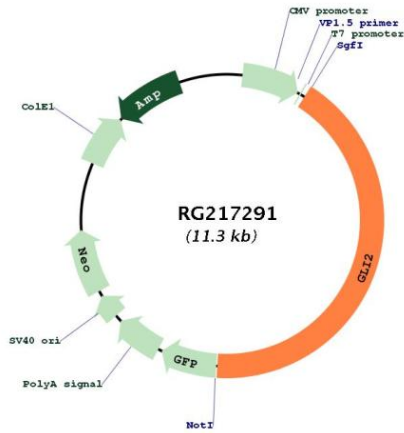


ACCN: NM\_005270

ORF Size: 4758 bp

<b>OTI Disclaimer:</b>	The molecular sequence of this clone aligns with the gene accession number as a point of reference only. However, individual transcript sequences of the same gene can differ through naturally occurring variations (e.g. polymorphisms), each with its own valid existence. This clone is substantially in agreement with the reference, but a complete review of all prevailing variants is recommended prior to use. <a href="#">More info</a>
<b>OTI Annotation:</b>	This clone was engineered to express the complete ORF with an expression tag. Expression varies depending on the nature of the gene.
<b>Components:</b>	The ORF clone is ion-exchange column purified and shipped in a 2D barcoded Matrix tube containing 10ug of transfection-ready, dried plasmid DNA (reconstitute with 100 ul of water).
<b>Reconstitution Method:</b>	<ol style="list-style-type: none"><li>1. Centrifuge at 5,000xg for 5min.</li><li>2. Carefully open the tube and add 100ul of sterile water to dissolve the DNA.</li><li>3. Close the tube and incubate for 10 minutes at room temperature.</li><li>4. Briefly vortex the tube and then do a quick spin (less than 5000xg) to concentrate the liquid at the bottom.</li><li>5. Store the suspended plasmid at -20°C. The DNA is stable for at least one year from date of shipping when stored at -20°C.</li></ol>
<b>RefSeq:</b>	<a href="#">NM_005270.5</a>
<b>RefSeq Size:</b>	6549 bp
<b>RefSeq ORF:</b>	4761 bp
<b>Locus ID:</b>	2736
<b>UniProt ID:</b>	<a href="#">P10070</a>
<b>Cytogenetics:</b>	2q14.2
<b>Protein Families:</b>	Adult stem cells, Cancer stem cells, Druggable Genome, Embryonic stem cells, ES Cell Differentiation/IPS
<b>Protein Pathways:</b>	Basal cell carcinoma, Hedgehog signaling pathway, Pathways in cancer
<b>Gene Summary:</b>	This gene encodes a protein which belongs to the C2H2-type zinc finger protein subclass of the Gli family. Members of this subclass are characterized as transcription factors which bind DNA through zinc finger motifs. These motifs contain conserved H-C links. Gli family zinc finger proteins are mediators of Sonic hedgehog (Shh) signaling and they are implicated as potent oncogenes in the embryonal carcinoma cell. The protein encoded by this gene localizes to the cytoplasm and activates patched Drosophila homolog (PTCH) gene expression. It is also thought to play a role during embryogenesis. The encoded protein is associated with several phenotypes- Greig cephalopolysyndactyly syndrome, Pallister-Hall syndrome, preaxial polydactyly type IV, postaxial polydactyly types A1 and B. [provided by RefSeq, Jul 2008]

Product images:



Circular map for RG217291