

## Product datasheet for **RG217280**

### **FGFR2 (NM\_022970) Human Tagged ORF Clone**

#### **Product data:**

Product Type:	Expression Plasmids
Product Name:	FGFR2 (NM_022970) Human Tagged ORF Clone
Tag:	TurboGFP
Symbol:	FGFR2
Synonyms:	BBDS; BEK; BFR-1; CD332; CEK3; CFD1; ECT1; JWS; K-SAM; KGFR; TK14; TK25
Mammalian Cell Selection:	Neomycin
Vector:	pCMV6-AC-GFP (PS100010)
E. coli Selection:	Ampicillin (100 ug/mL)



[View online »](#)

**ORF Nucleotide Sequence:**

>RG217280 representing NM\_022970  
 Red=Cloning site Blue=ORF Green=Tags(s)

GACGTTGTATACGACTCCTATAGGGCGGCCGGGAATTCGTCGACTGGATCCGGTACCGAGGAGATCTGCC  
 GCCGGCGCGCC

ATGGTCAGCTGGGGTCGTTTCATCTGCCTGGTCGTGGTACCATGGCAACCTTGTCCCTGGCCCGGCCCT  
 CCTTCAGTTTAGTTGAGGATACACATTAGAGCCAGAAGAGCCACCAACCAAATACCAAATCTCTCAACC  
 AGAAGTGTACGTGGCTGCGCCAGGGGAGTCGCTAGAGGTGCGCTGCCTGTTGAAAGATGCCGCCGTGATC  
 AGTTGGACTAAGGATGGGGTGCCTTGGGGCCCAACAATAGGACAGTGCTTATTGGGGAGTACTTGCAGA  
 TAAAGGGCGCCACGCCTAGAGACTCCGGCTCTATGCTTGTACTGCCAGTAGGACTGTAGACAGTAAAC  
 TTGGTACTTCATGGTGAATGTCACAGATGCCATCTCATCCGGAGATGATGAGGATGACACCGATGGTGCG  
 GAAGATTTTGTGAGTGAACAGTAACAACAAGAGAGCACCATACTGGACCAACACAGAAAAGATGGAAA  
 AGCGGCTCCATGCTGTGCTGCGGCCAACACTGTCAAGTTTCGCTGCCAGCCGGGGGAACCCAATGCC  
 AACCATGCGGTGGCTGAAAACGGGAAGGAGTTTAAAGCAGGAGCATCGCATTGGAGGCTACAAGGTACGA  
 AACCGACTGGAGCCTCATTATGGAAAGTGTGGTCCCATCTGACAAGGAAATTAACCTGTGTAGTGG  
 AGAATGAATACGGGTCCATCAATCACACGTACCACCTGGATGTTGTGGAGCGATCGCCTCACCGGCCAT  
 CCTCAAGCCGGACTGCCGGCAAATGCCTCCACAGTGGTCGGAGGAGACGTAGAGTTTGTCTGCAAGGTT  
 TACAGTGATGCCAGCCACATCCAGTGGATCAAGCAGTGGAAAAGAACGGCAGTAAATACGGGCCCCG  
 ACGGGCTGCCCTACCTCAAGGTTCTCAAGCACTCGGGGATAAATAGTTCCAATGCAGAAGTGTGGCTCT  
 GTTCAATGTGACCGAGGCGGATGCTGGGGAATATATGTAAGGTCTCCAATTATATAGGGCAGGCCAAC  
 CAGTCTGCCTGGCTCACTGTCTGCCAAAACAGCAAGCGCTGGAAGAGAAAAGGAGATTACAGCTTCCC  
 CAGACTCTGGAGATAGCCATTTACTGCATAGGGGTCTTCTTAATCGCCTGTATGGTGGTAAACAGTCA  
 CCTGTGCCGAATGAAGAACAGCAAGCAAGCCAGACTTCAGCAGCCAGCCGGCTGTGCACAAGCTGACC  
 AAACGTATCCCCCTGCGGAGACAGGTAACAGTTTCGGCTGAGTCCAGCTCCTCCATGAACTCCAACACC  
 CGCTGGTGAAGATAACAACACGCCTCTCTCAACGGCAGACACCCCATGCTGGCAGGGGTCTCCGAGTA  
 TGAACTCCAGAGGACCCAAAATGGGAGTTTCCAAGAGATAAGCTGACACTGGGCAAGCCCTGGGAGAA  
 GGTTGCTTTGGCAAGTGGTCAATGGCGAAGCAGTGGGAATTGACAAAGACAAGCCCAAGGAGCGGTCA  
 CCGTGGCCGTGAAGATGTTGAAAGATGATGCCACAGAGAAAGACCTTTCTGATCTGGTGTGACAGATGGA  
 GATGATGAAGATGATTGGGAAACACAAGAATATCATAAATCTTCTGGAGCCTGCACACAGGATGGGCCT  
 CTCTATGTCATAGTTGAGTATGCCTCTAAAGGCAACCTCCGAGAATACCTCCGAGCCCGGAGGCCACCCG  
 GGATGGAGTACTCCTATGACATTAACCGTGTTCCTGAGGAGCAGATGACCTTCAAGGACTTGGTGTGATG  
 CACCTACCAGCTGGCCAGAGGCATGGAGTACTTGGCTTCCAAAAATGTATTTCATCGAGATTTAGCAGCC  
 AGAAATGTTTTGGTAACAGAAAACAATGTGATGAAAATAGCAGACTTTGGACTCGCCAGAGATATCAACA  
 ATATAGACTATTACAAAAGACCACCAATGGGCGGCTTCCAGTCAAGTGGATGGCTCCAGAAGCCCTGTT  
 TGATAGAGTATACACTCATCAGAGTGTGTCTGGTCTTCGGGGTGTAAATGTGGGAGATCTTCACTTTA  
 GGGGGCTCGCCCTACCCAGGGATTCCCGTGGAGGAACCTTTTAAAGCTGCTGAAGGAAGGACACAGAATGG  
 ATAAGCCAGCCAACTGCACCAACGAAGTACATGATGATGAGGGACTGTTGGCATGCAGTGCCTCCCA  
 GAGACCAACGTTCAAGCAGTTGGTAGAAGACTTGGATCGAATTTCACTCTCACAACCAATGAGGAATAC  
 TTGGACCTCAGCCAACCTCTCGAACAGTATTCACCTAGTTACCCTGACACAAGAAGTTCTTGTCTTCAG  
 GAGATGATTCTGTTTTTCTCCAGACCCCATGCCTTACGAACCATGCCTTCTCAGTATCCACACATAAA  
 CGGCAGTGTTAAACA

ACGCGTACGCGGCCGCTCGAG - GFP Tag - GTTTAA

**Protein Sequence:** >RG217280 representing NM\_022970  
 Red=Cloning site Green=Tags(s)

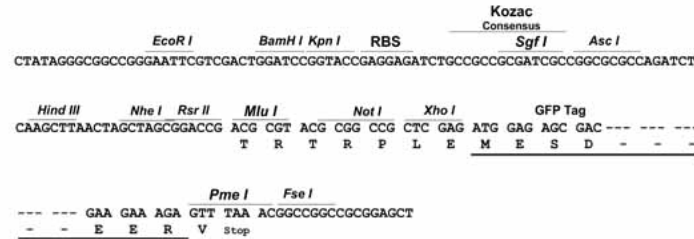
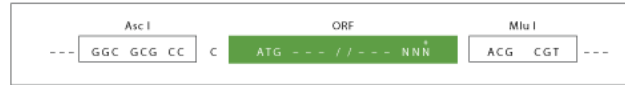
```
MVSWGRFICLVVVTMATLSLARPSFLVEDTTLEPEEPPTYQISQPEVYVAAPGESLEVRCLLKDAAVI
SWTKDGVHLGPNNRTLIGEYLQIKGATPRDGLYACTASRTVDSETWYFMVNVTDAISSGDEDDTDGA
EDFVSENSNNKRAPYWTNTEKMEKRLHAVPAANTVKFRCPAGGNPMPMTMRWLKNGKEFKQEHRIGGYKVR
NQHWSLIMESVVP SDKGNYTCVVENEYGSINHTYHLDVVERSHPHPILQAGLPANASTVVGGDVEFVCKV
YSDAQPHIQWIKHVEKNGSKYGPDGLPYLKVLKHSGINSNAEVLALFNVTEADAGEYICKVSNYIGQAN
QSAWLTVLPKQQAPGREKEITASPDYLEIAIYICIGVFLIACMVVTVILCRMKNNTTKKPDFSSQPAVHKL
KRIPLRRQVTVSAESSSSMNSNTPLVRITRRLSSTADTPMLAGVSEYELPEDPKWEFPRDKLTLGKPLGE
GCFGQVMAEAVGIDKDKPKEAVTVAVKMLKDDATEKDLSDLVSEMEMMKMIGKHKNIIINLLGACTQDGP
LYVIVEYASKGNLREYL RARRPPGMEYSYDINRVPEEQMTFKDLVSCYQLARGMEYLASQKCIHRDLAA
RNVLV TENNVMKIADFLARDINNIDYKKTNGRLPVKWMPEALFDRVYTHQSDVWVSGVLMWEIFTL
GGSPYPGIPVEELFKLLKEGHRMDK PACTNEL YMMRDCWHAVPSQRPTFKQLVEDLDRILTLTTNEEY
LDLSQPLEQYSPSPDTRSSCSSGDDSVFSPDMPYEPCLPQYPHINGSVKT
```

TRTRPLE - GFP Tag - V

**Restriction Sites:** AscI-MluI

**Cloning Scheme:**

Cloning sites used for ORF Shuttling:


**ACCN:** NM\_022970

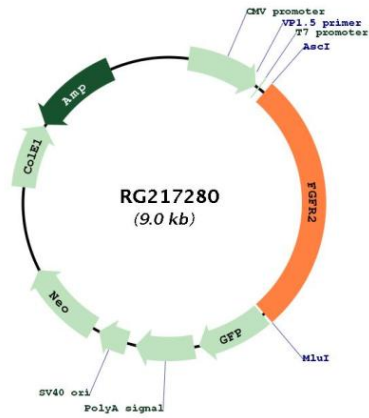
**ORF Size:** 2466 bp

**OTI Disclaimer:** The molecular sequence of this clone aligns with the gene accession number as a point of reference only. However, individual transcript sequences of the same gene can differ through naturally occurring variations (e.g. polymorphisms), each with its own valid existence. This clone is substantially in agreement with the reference, but a complete review of all prevailing variants is recommended prior to use. [More info](#)
**OTI Annotation:** This clone was engineered to express the complete ORF with an expression tag. Expression varies depending on the nature of the gene.

**Components:** The ORF clone is ion-exchange column purified and shipped in a 2D barcoded Matrix tube containing 10ug of transfection-ready, dried plasmid DNA (reconstitute with 100 ul of water).

<b>Reconstitution Method:</b>	<ol style="list-style-type: none"><li>1. Centrifuge at 5,000xg for 5min.</li><li>2. Carefully open the tube and add 100ul of sterile water to dissolve the DNA.</li><li>3. Close the tube and incubate for 10 minutes at room temperature.</li><li>4. Briefly vortex the tube and then do a quick spin (less than 5000xg) to concentrate the liquid at the bottom.</li><li>5. Store the suspended plasmid at -20°C. The DNA is stable for at least one year from date of shipping when stored at -20°C.</li></ol>
<b>RefSeq:</b>	<a href="#">NM_022970.3</a> , <a href="#">NP_075259.4</a>
<b>RefSeq Size:</b>	4647 bp
<b>RefSeq ORF:</b>	2469 bp
<b>Locus ID:</b>	2263
<b>UniProt ID:</b>	<a href="#">P21802</a>
<b>Cytogenetics:</b>	10q26.13
<b>Domains:</b>	pkinase, TyrKc, S_TKc, ig, IGc2, IG
<b>Protein Families:</b>	Druggable Genome, Protein Kinase, Secreted Protein, Transmembrane
<b>Protein Pathways:</b>	Endocytosis, MAPK signaling pathway, Pathways in cancer, Prostate cancer, Regulation of actin cytoskeleton
<b>Gene Summary:</b>	<p>The protein encoded by this gene is a member of the fibroblast growth factor receptor family, where amino acid sequence is highly conserved between members and throughout evolution. FGFR family members differ from one another in their ligand affinities and tissue distribution. A full-length representative protein consists of an extracellular region, composed of three immunoglobulin-like domains, a single hydrophobic membrane-spanning segment and a cytoplasmic tyrosine kinase domain. The extracellular portion of the protein interacts with fibroblast growth factors, setting in motion a cascade of downstream signals, ultimately influencing mitogenesis and differentiation. This particular family member is a high-affinity receptor for acidic, basic and/or keratinocyte growth factor, depending on the isoform. Mutations in this gene are associated with Crouzon syndrome, Pfeiffer syndrome, Craniosynostosis, Apert syndrome, Jackson-Weiss syndrome, Beare-Stevenson cutis gyrata syndrome, Saethre-Chotzen syndrome, and syndromic craniosynostosis. Multiple alternatively spliced transcript variants encoding different isoforms have been noted for this gene. [provided by RefSeq, Jan 2009]</p>

Product images:



Circular map for RG217280