

## Product datasheet for **RG217265**

### Integrin alpha E (ITGAE) (NM\_002208) Human Tagged ORF Clone

#### Product data:

Product Type:	Expression Plasmids
Product Name:	Integrin alpha E (ITGAE) (NM_002208) Human Tagged ORF Clone
Tag:	TurboGFP
Symbol:	Integrin alpha E
Synonyms:	CD103; HUMINAE
Mammalian Cell Selection:	Neomycin
Vector:	pCMV6-AC-GFP (PS100010)
E. coli Selection:	Ampicillin (100 ug/mL)
ORF Nucleotide Sequence:	>RG217265 representing NM_002208 Red=Cloning site Blue=ORF Green=Tags(s)

TTTTGTAATACGACTCACTATAGGGCGCCGGGAATTCGTCGACTGGATCCGGTACCGAGGAGATCTGCC  
GCC**CGATCGC**C

ATGTGGCTCTCCACACTCTGCTCTGCATAGCCAGCCTGGCCCTGCTGGCCGCTTCAATGTGGATGTGG  
CCCAGCCCTGGCTCAGCCCAAGGGAGGTGCCCTTTCGTGCTCAGCTCCCTTCTGCACCAAGACCCAC  
CACCAACCAGACCTGGCTCCTGGTCACCAGCCCCAGAACCAAGAGGACACCAGGGCCCTCCATCGATGT  
TCCCTTGTCCAGGATGAAATCCTTGGCATCCTGTAGAGCATGTCCCATCCCCAAGGGGAGGCACCGGG  
GAGTGACCGTTGTCCGGAGCCACCAGGTGTTTTGATATGCATCAAGTGTGGTCCGGCGCCCTCACAG  
CCTCAGCTCAGAACTCACAGGCACCTGTAGCCTCCTGGGCCCTGACCTCCGTCCCCAGGCTCAGGCCAAC  
TTCTTCGACCTTGAAAATCTCCTGGATCCAGATGCACGTGTGGACTGGAGACTGCTACAGCAACAAAG  
AAGGCGGTGGAGAAGACGATGTGAACACAGCCAGGCAGCGCCGGGCTCTGGAGAAGGAGGAGGAGGAAGA  
CAAGGAGGAGGAGGAAGACGAGGAGGAGGAGGAAGCTGGCACCGAGATTGCCATCATCCTGGATGGCTCA  
GGAAGCATTGATCCCCAGACTTTCAGAGAGCCAAAGACTTCATCTCCAACATGATGAGGAACTTCTATG  
AAAAGTGTGAGTGCAACTTTGCCTTGGTGCAGTATGGAGGAGTATCCAGACTGAGTTTGACCTTCG  
GGACAGCCAGGATGTGATGGCCCTCCCTCGCCAGAGTCCAGAACATCACTCAAGTGGGAGTGTACCAAG  
ACTGCCACAGCATGCAACACGCTTTAGACAGCATCTTCACTCAAGCCAGGCTCCAGGAGAAAGGCAT  
CCAAGGTGATGGTGGTGTGCTCACCAGTGGTGGCATATTCGAGGACCCCTCAACCTTACGACAGTCATCAA  
CTCCCCAAAATGCAGGGTGTGAGCGCTTTGCCATTGGGGTGGGAGAAGAATTTAAGAGTGCTAGGACT  
GCGAGGGAACCTGATCGCCTCAGACCCGGATGAGACCCATGCTTTCAAGGTGACCAACTACATGG  
CGCTGGATGGGCTGCTGAGCAAACCTGCGGTACAACATCATCAGCATGGAAGGCACGGTTGGAGACGCCCT  
TCACTACCAGCTGGCACAGATTGGCTTCAGTGTCTCAGATCCTGGATGAGCGGCAGGTGCTGCTCGGCC  
GTCGGGGCTTTGACTGGTCCGGAGGGCGTGTCTACGACACACGCAGCCGCCGGGGCCGCTTCTGA  
ACCAGACAGCGGGCGGGCGGCAGACCGGAGGCTGCGCAGTACAGCTACCTGGTTACGCTGTGGCCGT  
GCTGCACAAGACCTGCAGCCTCTCTACGTCCGGGGGCTCCACAGTACAACATCATGGGGCCGTGTTT



[View online »](#)

GAGCTCCAGAAGGAGGGCAGAGAGGCCAGCTTCCTGCCAGTGCTGGAGGGAGAGCAGATGGGGTCTATT  
TTGGCTCTGAGCTGTGCCTGTGGACATTGACATGGATGGAAGCACGGACTTCTTGCTGGTGGCTGCTCC  
ATTTTACCACGTTTCATGGAGAAGAAGGCAGAGTCTACGTGTACCGTCTCAGCGAGCAGGATGGTTCTTTC  
TCCTTGGCACGCATACTGAGTGGCACCCTGGGTTTACCAATGCCCGCTTTGGCTTTGCCATGGCGGCTA  
TGGGGGATCTCAGTCAGGATAAGCTCACAGATGTGGCCATCGGGGCCCTGGAAGTTTTGGGGCAGA  
TGATGGTGCCAGCTTCGGCAGTGTATATCTACAATGGACACTGGGACGGCCTCTCCGCCAGCCCTCG  
CAGCGGATCAGAGCCTCCACGGTGGCCCCAGGACTCCAGTACTTCGGCATGTCCATGGCTGGTGGCTTTG  
ATATTAGTGGCGACGGCCTTGGCGACATCACCGTGGGCACTCTGGGCCAGGCGGTTGTGTTCCGCTCCCG  
GCCTGTGGTTCGCTGAAGGTCTCCATGGCCTTACCCCCAGCGCACTGCCCATCGGCTTCAACGGCGTC  
GTGAATGTCGGTTTATGTTTTGAAATCAGCTCTGTAACCACAGCCTCTGAGTCAGGCCTCCGTGAGGCAC  
TTCTCAACTTCACGCTGGATGTGGATGTGGGAAGCAGAGGAGACGGCTGCAGTGTTCAGACGTAAGAAG  
CTGTCTGGGCTGCCTGAGGGAGTGGAGCAGCGGATCCCAGCTTTGTGAGGACCTCCTGCTCATGCCACA  
GAGGGAGAGCTCTGTGAGGAGGACTGCTTCTCCAATGCCAGTGTCAAAGTCAGCTACCAGCTCCAGACCC  
CTGAGGGACAGACGGACCATCCCAGCCATCCTGGACCGCTACACTGAGCCCTTTGCCATCTTCCAGCT  
GCCCTATGAGAAGCCTGCAAGAATAAGCTGTTTTGTGTGCGAGAATTACAGTTGGCCACCACCGTCTCT  
CAGCAGGAGTTGGTGGTGGGTCTCACAAGGAGCTGACCCTGAACATTAACCTAACTAACCCTGGGGGAA  
ATTCTACATGACAAGCATGGCCTTGAATTACCCAGAAAACCTGCAGTTGAAGAGGATGCAAAAAGCCTCC  
CTCTCAAACATTCAGTGTGATGACCCTCAGCCGTTGCTTCTGTCTGTATCATGAACTGCAGGATTGGT  
CACCCCGTCTCAAGAGGTCATCTGCTCATGTTTCAGTCGTTTGGCAGCTAGAGGAGAATGCCTTTCCAA  
ACAGGACAGCAGACATCACTGTGACTGTCACCAATCCAATGAAAGACGGTCTTTGGCCAACGAGACCCA  
CACCTTCAATTCAGGCATGGCTTCGTTGCAGTCTGTCCAAACCATCCATAATGTACGTGAACACAGGC  
CAGGGGCTTTCTACCACAAAAGAATTCTCTTCCATGTACATGGGGAGAACCTCTTTGGAGCAGAATACC  
AGTTGCAAATTTGCGTCCCAACCAAATTACGAGGTCTCCAGTTGTAGCAGTGAAGAAGCTGACGAGGAC  
TCAGGCCTCCACGGTGTGCACCTGGAGTCAGGAGCGCGCTTGTGCGTACAGTTCGGTTCAGCATGTGGAA  
GAATGGCATTTCAGTGAGCTGTGTCATCGCTTCCAGATAAAGAAAATGTACCCGTGGCTGCAGAGATCTCT  
GGGATCACTCTGAGGAGTTACTAAAAGATGTAAGTGAAGTGCAGATCCTTGGTGAATATCTTTCAACAA  
ATCTCTATATGAGGGACTGAATGCAGAGAACCACAGAATAAGATCACTGTGCTTCTCTGAAAGATGAG  
AAGTACCATTCTTTGCCTATCATCATTAAAGGCAGCGTTGGTGGACTTCTGGTGTGATCGTGATTCTGG  
TCATCCTGTTCAAGTGTGGCTTTTTTAAAAGAAAATCAACAACCTGAAGTGGAGAGCATCAGGAAGGC  
CCAGCTGAAATCAGAGAATCTGCTCGAAGAAGAGAAT

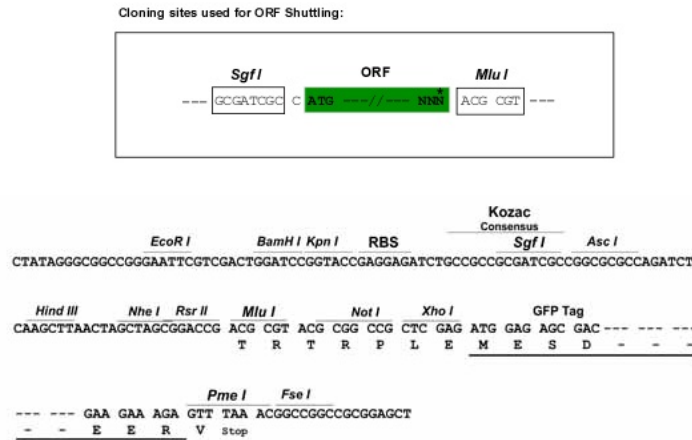
ACGCGTACGCGGCCGCTCGAG - GFP Tag - GTTTAA

**Protein Sequence:** >RG217265 representing NM\_002208  
 Red=Cloning site Green=Tags(s)

MWL FHTLLCIASLALLAAFNVDPVAPWLPKGGAPFVLSLLHQDPSTNQTWLLVTSRPTKRTPGPLHRC  
 SLVQDEILCHPVEHVPIPKGRHRGVTVVRSHHGVLICIQVLVRRPHLSSELGTGCSLLGPDLRPQAQAN  
 FFDLENLLDPDARVDTGDCYSNKEGGEDDVNTARQRRALEKEEEEDEEEEEAGTEIAIILDGS  
 GSIDPPDFQRAKDFISNMMRNFYEKCFECNFALVQYGGVIQTEFDLRDSQDVMASLARVQNIQVGSVTK  
 TASAMQHVLDISIFTSHGSRKASKVMVVLTDGGIFEDPLNLTVINSPKMQGVERFAIGVGEEFKSART  
 ARELNLIASDPDETHAFKVTNYMALDGLLSKLRNYIISMEGTVDALHYQLAQIGFSAQILDERQVLLGA  
 VGAFDWSGGALLYDTRSRRRFLNQAAAAADAEAAQSYLYGAVAVLHKTCSLSYVAGAPQYKHHGAVF  
 ELQKEGREASFLPVLEGEQMSYFGSELCPVDIDMDGSTDFLLVAAPFYHVHGEGRVYVYRSEQDGSF  
 SLARILSGHPGFTNARFGFAMAAMGDLSDQKLTDAIGAPLEFGGADDGASFGSVIYNGHWDGLSASPS  
 QRIRASTVAPGLQYFGMSMAGGFDISGDGLADITVGTGQAVVFRSRPVVRLKVSMAFTPSALPIGFNGV  
 VNVRLCFEISSVTTASESGLREALLNFTLDVDVGKQRRRLQCSDVRSCLGCLREWSGSQLEDLLMPT  
 EGELCEEDCFSNASVKVSYQLQTPGQTDHPQPILDRYTEPFAIFQLPYEKACKNKLFCVAELQLATTVS  
 QQELVVGTLKELTLNINLTNSGEDSYMTEALNYPRNLQKRMQKPPSPNIQCDDPQPVASVLIIMNCRIG  
 HPVLKRSSAHVSVVWQLEENAFPNRTADITVTVTNSNERRSLANETHTLQFRHGFVAVLSKPSIMYVNTG  
 QGLSHHKEFLFHVHGENLFGAEYQLQICVPTKLRGLQVVAVKCLRTRQASTVCTWSQERACAYSSVQHVE  
 EWHSVSCVIASDKENVTVAEEISWDHSEELLKDVELQILGEISFNKSLYEGLNAENHRKITVVFVKDE  
 KYHSLPIIKGSVGGLLVILVILFKCGFFKRKYQQLNLESIRKAQLKSENLEEN

TRTRPLE - GFP Tag - V

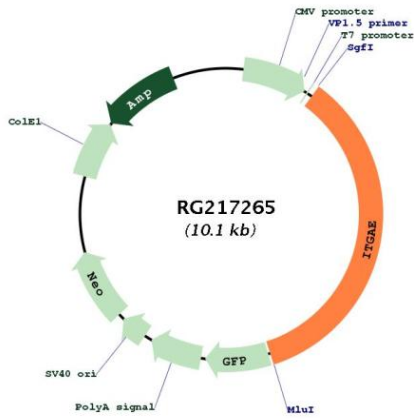
**Restriction Sites:** SgfI-MluI  
**Cloning Scheme:**



**ACCN:** NM\_002208  
**ORF Size:** 3537 bp

<b>OTI Disclaimer:</b>	The molecular sequence of this clone aligns with the gene accession number as a point of reference only. However, individual transcript sequences of the same gene can differ through naturally occurring variations (e.g. polymorphisms), each with its own valid existence. This clone is substantially in agreement with the reference, but a complete review of all prevailing variants is recommended prior to use. <a href="#">More info</a>
<b>OTI Annotation:</b>	This clone was engineered to express the complete ORF with an expression tag. Expression varies depending on the nature of the gene.
<b>Components:</b>	The ORF clone is ion-exchange column purified and shipped in a 2D barcoded Matrix tube containing 10ug of transfection-ready, dried plasmid DNA (reconstitute with 100 ul of water).
<b>Reconstitution Method:</b>	<ol style="list-style-type: none"><li>1. Centrifuge at 5,000xg for 5min.</li><li>2. Carefully open the tube and add 100ul of sterile water to dissolve the DNA.</li><li>3. Close the tube and incubate for 10 minutes at room temperature.</li><li>4. Briefly vortex the tube and then do a quick spin (less than 5000xg) to concentrate the liquid at the bottom.</li><li>5. Store the suspended plasmid at -20°C. The DNA is stable for at least one year from date of shipping when stored at -20°C.</li></ol>
<b>RefSeq:</b>	<a href="#">NM_002208.4</a> , <a href="#">NP_002199.3</a>
<b>RefSeq Size:</b>	3878 bp
<b>RefSeq ORF:</b>	3540 bp
<b>Locus ID:</b>	3682
<b>UniProt ID:</b>	<a href="#">P38570</a>
<b>Cytogenetics:</b>	17p13.2
<b>Protein Families:</b>	Druggable Genome, ES Cell Differentiation/IPS, Transmembrane
<b>Protein Pathways:</b>	Regulation of actin cytoskeleton
<b>Gene Summary:</b>	Integrins are heterodimeric integral membrane proteins composed of an alpha chain and a beta chain. This gene encodes an I-domain-containing alpha integrin that undergoes post-translational cleavage in the extracellular domain, yielding disulfide-linked heavy and light chains. In combination with the beta 7 integrin, this protein forms the E-cadherin binding integrin known as the human mucosal lymphocyte-1 antigen. This protein is preferentially expressed in human intestinal intraepithelial lymphocytes (IEL), and in addition to a role in adhesion, it may serve as an accessory molecule for IEL activation. [provided by RefSeq, Jul 2008]

Product images:



Circular map for RG217265