

Product datasheet for **RG217259**

5 Lipoxygenase (ALOX5) (NM_000698) Human Tagged ORF Clone

Product data:

Product Type:	Expression Plasmids
Product Name:	5 Lipoxygenase (ALOX5) (NM_000698) Human Tagged ORF Clone
Tag:	TurboGFP
Symbol:	ALOX5
Synonyms:	5-LO; 5-LOX; 5LPG; LOG5
Mammalian Cell Selection:	Neomycin
Vector:	pCMV6-AC-GFP (PS100010)
E. coli Selection:	Ampicillin (100 ug/mL)



[View online »](#)

ORF Nucleotide
Sequence:

>RG217259 representing NM_000698
Red=Cloning site Blue=ORF Green=Tags(s)

TTTTGTAATACGACTCACTATAGGGCGGCCGGAATTCGTCGACTGGATCCGGTACCGAGGAGATCTGCC
GCCGCGATCGCC

ATGCCCTCTACACGGTACCGTGGCCACTGGCAGCCAGTGGTTCGCCGGCACTGACGACTACATCTACC
TCAGCCTCGTGGGCTCGGCGGGCTGCAGCGAGAAGCACCTGCTGGACAAGCCCTTACAAACGACTTCGA
CGGTGGCGCGGTGGATTCATACGACGTGACTGTGGACGAGGAAGTGGGCGAGATCCAGCTGGTCAGAATC
GAGAAGCGCAAGTACTGGCTGAATGACGACTGGTACCTGAAGTACATCACGCTGAAGACGCCCCACGGGG
ACTACATCGAGTTCCTGCTACCCTGGATCACCGGCGATGTCGAGGTTGCTCTGAGGGATGGACGCGC
AAAGTTGGCCGAGATGACCAAATTCACATTCTCAAGCAACACCGACGTAAGAAGTGGAAAACACGGCAA
AAACAATATCGATGGATGGAGTGAACCTGGCTTCCCCTTGAGCATCGATGCCAAATGCCACAAGGATT
TACCCCGTGATATCCAGTTTGTAGTGAAGAGGAGTGGACTTTGTTCTGAATTACTCCAAGCGATGGA
GAACCTGTTCAACCGCTTCATGCACATGTTCCAGTCTTCTTGAATGACTTCGCCGACTTTGAGAAA
ATCTTTGTCAAGATCAGCAACACTATTTCTGAGCGGGTCATGAATCACTGGCAGGAAGACCTGATGTTG
GCTACCAGTTCCTGAATGGCTGCAACCCTGTGTTGATCCGGCGCTGCACAGAGCTGCCCGAGAAGCTCCC
GGTGACCACGGAGATGGTAGAGTGCAGCCTGGAGCGGCAGCTCAGCTTGGAGCAGGAGGTCCAGCAAGGG
AACATTTTCATCGTGGACTTTGAGCTGTGGATGGCATCGATGCCAACAAAACAGACCCCTGCACACTCC
AGTTCTCGGCCGCTCCCATCTGCTTGTGTATAAGAACCTGGCCAACAAGATTGTCCCATTGCCATCCA
GCTCAACCAAATCCCGGGAGATGAGAACCCTATTTTCTCCCTTCGGATGCAAAAACGACTGGCTTTTG
GCCAAAATCTGGGTGCGTTCAGTGACTTCCACGTCCACCAGACCATCACCCACCTTCTGCGAACACATC
TGGTGTCTGAGGTTTTTGGCATTGCAATGTACCGCCAGCTGCCTGTGTGCACCCCAATTTCAAGCTGCT
GGTGGCACACGTGAGATTACCAATTGCAATCAACACCAAGGCCCGTGAGCAGCTCATCTGCGAGTGTGGC
CTCTTTGACAAGGCCAACGCCACAGGGGCGGTGGGCACGTGCAGATGGTGCAGAGGGCCATGAAGGACC
TGACCTATGCCTCCCTGTGCTTTCCCGAGGCCATCAAGGCCCGGGGCATGGAGAGCAAAGAAGACATCCC
CTACTACTTACCGGGACGACGGGCTCCTGGTGTGGGAAGCCATCAGGACGTTACGGCCGAGGTGGTA
GACATCTACTACGAGGGCGACCAGGTGGTGGAGGAGGACCCGGAGCTGCAGGACTTCGTGAACGATGTCT
ACGTGTACGGCATGCGGGGCGCAAGTCTCAGGCTTCCCAAGTCGGTCAAGAGCCGGGAGCAGCTGTC
GGAGTACCTGACCGTGGTATCTTACCCTCCGCCAGCACGCCGCGGTCAACTTCGGCCAGTACGAC
TGGTGCTCCTGGATCCCAATGCGCCCCAACCATGCGAGCCCCCGCCGACTGCCAAGGGCGTGGTGA
CCATTGAGCAGATCGTGGACACGCTGCCCGACCGCGCCGCTCCTGCTGGCATCTGGGTGCAAGTGTGGC
GCTGAGCCAGTTCAGGAAAACGAGCTGTTCTGGGCATGTACCCAGAAGAGCATTTTATCGAGAAGCCT
GTGAAGGAAGCCATGGCCGATTCCGCAAGAACCTCGAGGCCATTGTGAGCGTATTGCTGAGCGCAACA
AGAAGAAGCAGCTGCCATATTACTACTTGTCCCCAGACCGGATCCGAACAGTGTGGCCATC

ACGCGTACGCGGCCGCTCGAG - GFP Tag - GTTTAA

Protein Sequence: >RG217259 representing NM_000698
 Red=Cloning site Green=Tags(s)

MPSYTVTATGSQWVAGTDDYIYLSLVGSAGCSEKHLDDKPFYNDFERGAVDSYDVTVDEELGEIQLVRI
 EKRYWLNDDWYLKYITLKTTPHGDYIEFPCYRWITGDVEVVLDRGAKLARDDQIHILKQHRKELETRQ
 KQYRWMEWNPGFPLSIDAKCHKDLPRDIQFDSEKGVDFVLNYSKAMENLFINRFMHMFQSSWADFADFEK
 IFVKISNTISERVMNHQEDLMFGYQFLNGCNPVLIRRCTELPEKLPVTTEMVECSLERQLSLEQEVQQG
 NIFIVDFELLDGIDANKDPTLQFLAAPICLLYKNLANKIVPIAIQLNQIPGDENPIFLPSDAKYDWLL
 AKIWRSSDFHVHQITHTLLRTHLVSEVFGIAMYRQLPAVHPIFKLLVAHVRFTHIAINTKAREQLICECG
 LFDKANATGGGGHVQMVQRAMKDLTYASLCFPEAIKARGMESKEDIPIYFYRDDGLLVWEAIRTFTAIEVV
 DIYYEGDQVVEEDPELQDFVNDVYVYGMGRKSSGFPSVKSREQLSEYLVVIFVIFASAQHAAVNFGQYD
 WCSWIPNAPPTMRAPPPTAKGVVITIEQIVDTLPDRGRSCWHLGAVWALSQFQENELFLGMYPEEHFIEKP
 VKEAMARFRKNLEAIVSVIAERNKKKQLPYYYLSPDRIPNSVAI

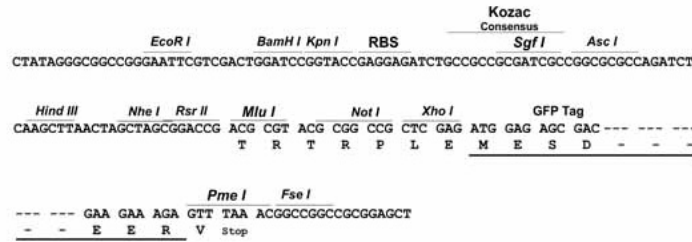
TRTRPLE - GFP Tag - V

Restriction Sites:

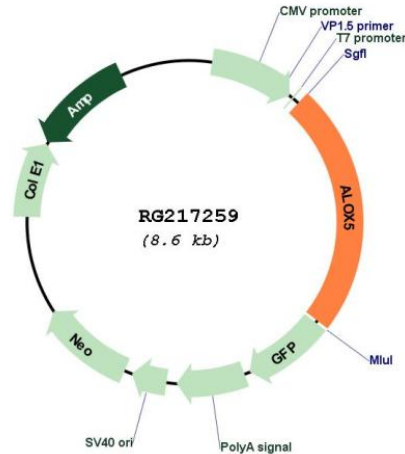
SgfI-MluI

Cloning Scheme:

Cloning sites used for ORF Shuttling:



Plasmid Map:



ACCN: NM_000698

ORF Size: 2022 bp

OTI Disclaimer: The molecular sequence of this clone aligns with the gene accession number as a point of reference only. However, individual transcript sequences of the same gene can differ through naturally occurring variations (e.g. polymorphisms), each with its own valid existence. This clone is substantially in agreement with the reference, but a complete review of all prevailing variants is recommended prior to use. [More info](#)

OTI Annotation: This clone was engineered to express the complete ORF with an expression tag. Expression varies depending on the nature of the gene.

Components: The ORF clone is ion-exchange column purified and shipped in a 2D barcoded Matrix tube containing 10ug of transfection-ready, dried plasmid DNA (reconstitute with 100 ul of water).

Reconstitution Method:

1. Centrifuge at 5,000xg for 5min.
2. Carefully open the tube and add 100ul of sterile water to dissolve the DNA.
3. Close the tube and incubate for 10 minutes at room temperature.
4. Briefly vortex the tube and then do a quick spin (less than 5000xg) to concentrate the liquid at the bottom.
5. Store the suspended plasmid at -20°C. The DNA is stable for at least one year from date of shipping when stored at -20°C.

RefSeq: [NM_000698.2](#), [NP_000689.1](#)

RefSeq Size:	2568 bp
RefSeq ORF:	2025 bp
Locus ID:	240
UniProt ID:	P09917
Cytogenetics:	10q11.21
Domains:	lipoxygenase, PLAT
Protein Families:	Druggable Genome
Protein Pathways:	Arachidonic acid metabolism, Metabolic pathways
Gene Summary:	<p>This gene encodes a member of the lipoxygenase gene family and plays a dual role in the synthesis of leukotrienes from arachidonic acid. The encoded protein, which is expressed specifically in bone marrow-derived cells, catalyzes the conversion of arachidonic acid to 5(S)-hydroperoxy-6-trans-8,11,14-cis-eicosatetraenoic acid, and further to the allylic epoxide 5(S)-trans-7,9-trans-11,14-cis-eicosatetraenoic acid (leukotriene A4). Leukotrienes are important mediators of a number of inflammatory and allergic conditions. Mutations in the promoter region of this gene lead to a diminished response to antileukotriene drugs used in the treatment of asthma and may also be associated with atherosclerosis and several cancers. Alternatively spliced transcript variants encoding different isoforms have been found for this gene. [provided by RefSeq, Jan 2012]</p>