

Product datasheet for **RG217246**

LCN10 (NM_001001712) Human Tagged ORF Clone

Product data:

Product Type: Expression Plasmids
Product Name: LCN10 (NM_001001712) Human Tagged ORF Clone
Tag: TurboGFP
Symbol: LCN10
Mammalian Cell Selection: Neomycin
Vector: pCMV6-AC-GFP (PS100010)
E. coli Selection: Ampicillin (100 ug/mL)
ORF Nucleotide Sequence: >RG217246 representing NM_001001712
Red=Cloning site Blue=ORF Green=Tags(s)

TTTTGTAATACGACTCACTATAGGGCGGCCGGAATTCGTCGACTGGATCCGGTACCGAGGAGATCTGCC
GCCCGATCGCC

ATGAGGCAGGGGCTGCTGGTGTGGCGCTGGTGTGGTGTGGTGTAGTGCTGGCTGCAGGGTCCCAGG
TGCAGGAGTGGTACCCAGGGAGTCCCACGCCCTCAACTGGAACAAGTTTCAGGGTTCTGGTACATTCT
GGCCACTGCCACTGATGCCAGGGATTCTTGCCGGCCAGGGACAAGAGGAAGCTGGGGCGTCCGTGGTA
AAGGTGAACAAAGTGGGCCAGCTCCGCGTCTCCTCGCCTTCAGACGGTTGAAGGGGTGCCAGTCCCAGG
AGGTGATCCTGAGGAAAGACGGGAAGAAGCCGGTGTGGGAACGCCTGTGCATACGCGGGCCCGGAG
GGAAGGACAGGAGGAGTGAAAGGGGTGAAGGCCCTCCACGTGCTGCCACTGACTACAGCTACGGCTTG
GTCTACCTCCGCCTGGGGCTGCAACCCAAAACACAAGAACCTGCTGCTCTCCATAGGCAGAATGTTT
CGAGCTTCCAGAGTCTGAAGGAATTCATGGACGCTTGTGACATTCTGGGCTCTCCAAGGCCCGCTCAT
CCTCCGAAAGACGCGTCCCGTACACACACCATCCTGCCA

AGCGGACCGACGCGTACGCGGCCGCTCGAG - GFP Tag - GTTTAA

Protein Sequence: >RG217246 representing NM_001001712
Red=Cloning site Green=Tags(s)

MRQGLLVLALVLLVLAAGSQVQEWYPRESHALNWNKFSGFYILATATDAQGFLPARDKRKLGASV
KVNKVGQLRVLLAFRRLKGCQSQEVILRKDGKPVFGNACAYAAGPREGQEGVKGVKAFHVLSTDYSYGL
VYLRGRATQNYKNLLLFRQNVSSFQSLKEFMDACDILGLSKAAVILPKDASRTHITLP

SGPTRRRLE - GFP Tag - V

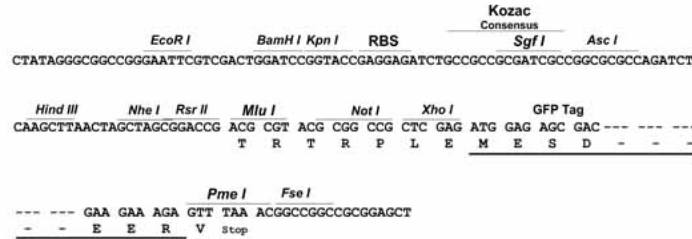
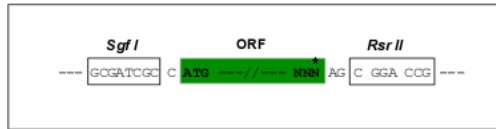
Restriction Sites: SgfI-RsrII



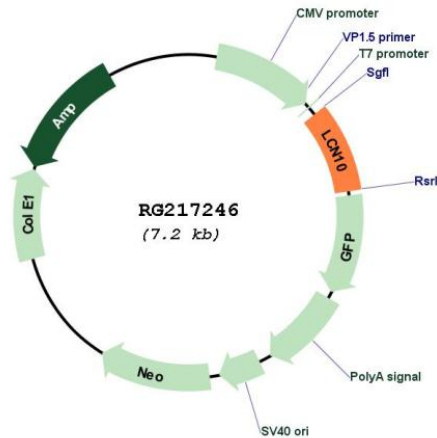
[View online »](#)

Cloning Scheme:

Cloning sites used for ORF Shuttling:



Plasmid Map:



ACCN: NM_001001712

ORF Size: 600 bp

OTI Disclaimer: The molecular sequence of this clone aligns with the gene accession number as a point of reference only. However, individual transcript sequences of the same gene can differ through naturally occurring variations (e.g. polymorphisms), each with its own valid existence. This clone is substantially in agreement with the reference, but a complete review of all prevailing variants is recommended prior to use. [More info](#)

OTI Annotation: This clone was engineered to express the complete ORF with an expression tag. Expression varies depending on the nature of the gene.

Components:	The ORF clone is ion-exchange column purified and shipped in a 2D barcoded Matrix tube containing 10ug of transfection-ready, dried plasmid DNA (reconstitute with 100 ul of water).
Reconstitution Method:	<ol style="list-style-type: none">1. Centrifuge at 5,000xg for 5min.2. Carefully open the tube and add 100ul of sterile water to dissolve the DNA.3. Close the tube and incubate for 10 minutes at room temperature.4. Briefly vortex the tube and then do a quick spin (less than 5000xg) to concentrate the liquid at the bottom.5. Store the suspended plasmid at -20°C. The DNA is stable for at least one year from date of shipping when stored at -20°C.
RefSeq:	NM_001001712.3
RefSeq Size:	2047 bp
RefSeq ORF:	603 bp
Locus ID:	414332
UniProt ID:	Q6JVE6
Cytogenetics:	9q34.3
Protein Families:	Secreted Protein, Transmembrane
Gene Summary:	Members of the lipocalin family, such as LCN10, have a common structure consisting of an 8-stranded antiparallel beta-barrel that forms a cup-shaped ligand-binding pocket or calyx. Lipocalins generally bind small hydrophobic ligands and transport them to specific cells (Suzuki et al., 2004 [PubMed 15363845]).[supplied by OMIM, Aug 2009]