

Product datasheet for **RG217240**

NRK (NM_198465) Human Tagged ORF Clone

Product data:

Product Type:	Expression Plasmids
Product Name:	NRK (NM_198465) Human Tagged ORF Clone
Tag:	TurboGFP
Symbol:	NRK
Synonyms:	NESK
Mammalian Cell Selection:	Neomycin
Vector:	pCMV6-AC-GFP (PS100010)
E. coli Selection:	Ampicillin (100 ug/mL)
ORF Nucleotide Sequence:	>RG217240 representing NM_198465 Red=Cloning site Blue=ORF Green=Tags(s)

TTTTGTAATACGACTCACTATAGGGCGGCCGGAATTCGTCGACTGGATCCGGTACCGAGGAGATCTGCC
GCC**CGATCGCC**

ATGGCGGGACCTGGGGCTGGAGGGACAGGGAGGTCACGGATCTGGGCCACCTGCCGGATCCAACCTGGAA
TATTCTCACTAGATAAAACCATTTGGCCTTGGTACTTATGGCAGAATCTATTTGGGACTTCATGAGAAGAC
TGGTGCATTTACAGCTGTTAAAGTGATGAACGCTCGTAAGACCCCTTTACCTGAAATAGGAAGGCGAGTG
AGAGTGAATAAATATCAAAAATCTGTTGGGTGGAGATACAGTGATGAGGAAGAGGATCTCAGGACTGAAC
TCAACCTTCTGAGGAAGTACTCTTCCACAAAAACATTGTCTCTATGGAGCATTTTCAAGCTGAG
TCCCCCTGGTCAGCGGCACCAACTTTGGATGGTATGGAGTTATGTGCAGCAGGTTCCGGTCACTGATGTA
GTGAGAATGACCAAGTAATCAGAGTTTAAAAAGAGGTTGGATTGCTTATATCTGCCGAGAAATCCTTCAGG
GCTTAGCTCACCTTCACGCACACCGAGTAATTCACCGGGACATCAAGGTCAGAATGTGCTGCTGACTCA
TAATGCTGAAGTAAAACCTGGTTGATTTTGGAGTGAGTGCCAGGTGAGCAGAATAATGGAAGAAGGAAT
AGTTTCATTGGGACACCATACTGGATGGCACCTGAGGTGATTGACTGTGATGAGGACCAAGACGCTCCT
ATGATTACAGAAGTGATGTGGTCTGTGGGAATTACTGCCATTGAAATGGCTGAAGGAGCCCTCCTCT
GTGTAACCTTCAACCCTTGAAGCTCTCTCGTTATTTTGCGGGAATCTGCTCCCACAGTCAAATCCAGC
GGATGGTCCCCTAAGTTCACAATTTTCATGAAAAGGTACGATAAAAAATTTCCCTGTTTCTGCTACTT
CTGCAAAACATGCTTCAACACCCATTTGTTCCGGATATAAAAAATGAACGACATGTTGTTGAGTCATTAAC
AAGGCATCTTACTGGAATCATAAAAAAGACAGAAAAAGGAATACCTTTGATCTTTGAAAAGAGAAGAA
GCTATTAAGGAACAGTACACCGTGAAGAATTCAGAGGACCTCTTGCCTCACGAGCTTCTGAGATTGC
CAACCAGCAGCAGATGCAGACCACTTAGAGTCTGCATGGGGAACCTCTCAGCCAAGGTGGCTACCTGA
TCGAGAAGAGCCACAGGTCAGGCACTTACAGCAGCTACAGGGAGCAGCCAGGATTCATGCCACTGCAG
GCTCTGGACAGTGCACCTAAGCCTCTAAGGGGCAGGCTCAGGCACCTCAACGACTACAAGGGGCAGCTC
GGGTGTTTCATGCCACTACAGGCTCAGGTGAAGGCTAAGGCCTCTAAACCTCTACAATGCAGATTAAGGC
ACCTCCAGACTACGGAGGGCAGCCAGGTTGCTCATGCCACTACAGGCACAGGTTAGGGCACCTAGGCTT



[View online »](#)

CTGCAGGTACAGTCCCAGGTATCCAAAAAGCAGCAGGCCAGACCCAGACATCAGAACCACAAGATTTGG
 ACCAGGTACCAGAGGAATTTAGAGTCAAGATCAGGTACCCGAACAACAAGGCAGGGCCAGGCCCTGA
 ACAACAGCAGAGGCACAACCAGGTGCCTGAACAAGAGCTGGAGCAGAACCAGGCACCTGAACAGCCAGAG
 GTACAGGAACAGGCTGCCGAGCCTGCACAGGCAGGGACTGAGGCAGAGGAACCTGAGTCATTACGAGTAA
 ATGCCAGGTATTTCTGCCCTGCTATCACAAGATCACCATGTGCTGTTGCCACTACATTTGGATACTCA
 GGTGCTCATTCCAGTAGAGGGGCAAAGTGAAGGATCACCTCAGGCACAGGCTTGGACACTAGAGCCCCCA
 CAGGCAATTGGCTCAGTTCAAGCACTGATAGAGGGACTATCAAGAGACTTGCTTCGGGCGCCAAACTCAA
 ATAACTCAAAGCCACTTGGTCCGTTGCAAACCCTGATGGAAAATCTGTCATCAAATAGGTTTTACTCACA
 ACCAGAACAGGCACGGGAGAAAAAATCAAAGTTTCTACTCTGAGGCAAGCACTGGCAAAAAAGACTATCA
 CCAAAGAGGTTCCGGGCAAAGTCAATCATGGAGACCTGAAAAGCTTGAAGTCTCGGATTTAGAAGCCCGCA
 GGCAAAGCGCCAACGCAGATGGGAAGATATCTTTAATCAGCATGAGGAAGAATTGAGACAAGTTGATAA
 AGACAAAGAAGATGAATCATCAGACAATGATGAAGATTTTCATTTCGATTCAGGCTGAAGTCCAGATAGAG
 CCATTGAAGCCATACATTTCAAATCCTAAAAAATTTGAGGTTCAAGAGAGATCTCCTTCTGTGCCTAACA
 ACCAGGATCATGCACATCATGTCAAGTTCTCTTCAAGCGTTCCTCAGCGGTCTCTTTTGGAAACAAGTCA
 GAAGCCATTGACATCAGACAAAGGAGTTCGCAAATCGTCAAATTTGGCTGGCAGCATCAGAATCTTCT
 TCTGAGGAAGAAAGTCTGTGACTGGAAGGAGGCTCAGTCATCACCACCTTATTCTACTATTGATCAGA
 AGTTGCTGGTTGACATCCATGTTCCAGATGGATTTAAAGTAGGAAAAATACACCCCTGTATACTTGAC
 AAACGAATGGGTAGGCTATAATGCACTCTCTGAAATCTTCCGGAATGATTGGTAACTCCGGCACCTGTC
 ATTCAGCCACCTGAAGAGGATGGTGATTATGTTGAACTCTATGATGCCAGTGTGATACTGATGGTGATG
 ATGATGATGAGTCTAATGATACTTTTGAAGATACCTATGATCATGCCAATGGCAATGATGACTTGGATAA
 CCAGGTTGATCAGGCTAATGATGTTTGTAAAGACCATGATGATGACAACAATAAGTTTGTGATGATGTA
 AATAATAATTATGAGGCGCTAGTTGTCCAAGGGCAAAGCTATGGCAGAGATGGAAGTGAAGCAAGCAAG
 ATGGTTATGATGGAAGTCTGGAAAAGAGGAAGCCTACAGAGGCTATGGAAGCCATACAGCCAATAGAAG
 CCATGGAGGAAGTGCAGCCAGTGAAGACAATGCAGCCATTGGAGATCAGGAAGAACATGCAGCCAAATA
 GGCAAGTGAAGAAGAGGCAAGTGAAGGTTGATGGAGTAAAGGAGTCTTCAACCAGTGAAGAGAGTGGAG
 CCCTTGGACTCAATGGAGAAGAAAATGCTCAGAGACAGATGGTCCAGGATTGAAGAGACCTGCGTCTCA
 GGACTTTGAATATCTACAGGAGGAGCCAGGTGGTGGAAATGAGGCCTCAAATGCCATTGACTCAGGTGCT
 GCACCGTCAGCACCTGATCATGAGAGTGAACAATAAGGACATATCAGAATCACCACACAATCAGATTTTT
 CTGCCAATCACTCATCTCCTTCAAAGGTTCTGGGATGTCTGCTGATGCTAACTTGGCAGTGCCATCTT
 ATACGCTGGATTCTGAGAAGTACCTGAGGAATCACCTAAGCAACCCTCTGAAGTCAATGTTAACCCACTC
 TATGCTCTCCTGCATGTAAAAACCCTAATCCACATGTATGAAAAGGAGTTCACTTCTGAGATCTGCT
 GCGGTTCTTTGTGGGAGTCAATTTGCTGTTGGGAACCCGATCTAATCTATATCTGATGGACAGAAGTGG
 AAAGGCTGACATTAACCTTATAAAGCGAAGACCATTCCGCCAGATTCAAGTCTTAGAGCCACTCAAT
 TTGCTGATTACCATCTCAGGTACATAAGAACAGACTTCGGGTGTATCATCTGACCTGGTTGAGGAACAAGA
 TTTTGAATAATGATCCAGAAAAGTAAAAGAAGGCAAGAAGAAATGCTGAAGACAGAGGAAGCTGCAAAGC
 TATTGATAAGTTAACAGGCTGTGAACACTTCAGTGTCTCCAACATGAAGAAACAACATATATTGCAATT
 GCTTTGAAATCATCAATCACCTTATGATGAGGACCAAAAGTCTTTGATGAAAGCACTGCTATTAAG
 TATGATTGATCAATCAGCAGACTCTGAAGGAGACTACATGTCTATCAAGCCTATATACGAATACTGGC
 AAAAATACAGGCAGCTGATCCAGTGAACCGGTTTAAAGAGACCAGATGAGCTCCTTCATTTGCTGAAGCTC
 AAGGTATTTCCAACACTTGATCATAAGCCAGTGAAGTGGACTGCTATTGGTTCTGAAAAAAGACTAA
 AGATTTTCTCAGCTCAGCAGATGGATATCACCTCATCGATGCAGAATCTGAGGTTATGTCTGATGTGAC
 CCTGCCAAAGAATCCCCTGGAAATCATTATACCACAGAATATCATCATTTTACCTGATTGCTTGGGAATT
 GGCATGATGCTCACCTTCAATGTGAAGCCCTCTCTGTGGAAGCAAATGAACAACCTTCAAGAAGATCC
 TTGAAATGTGAAAGACATACCATCTTCTATAGCTTTTGAATGTACACAGCGAACCACAGGATGGGGCCA
 AAAGGCCATTGAAGTGCCTCTTTGCAATCCAGGGTCTGGAAAGTGAAGTGAAGCGCAGGTCATTAAG
 AAGCTGAGATTCCTGTGCACCCGGGTGACAAGCTGTTCTTACCTCTACCCTGCGCAATCACCACAGCC
 GGGTTTACTTCATGACACTTGGAAAACCTGAAGAGCTCCAAGCAATTATGATGTC

ACGCGTACGCGGCCGCTCGAG – GFP Tag – GTTTAA

Protein Sequence: >RG217240 representing NM_198465
 Red=Cloning site Green=Tags(s)

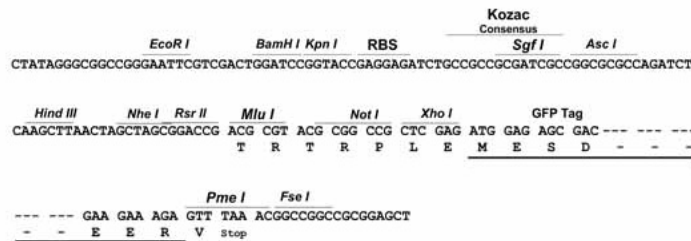
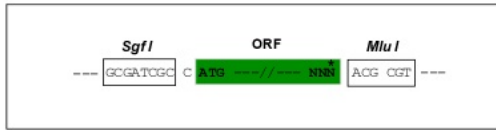
MAGPGGWRDREVDLGHLPDPTGIFSLDKTIGLGTYGRIYGLHEKTGAFTAVKVMNARKTPLPEIGRRV
 RVNKYQKSVGWYSDEEEDLRTELNLLRKYSFHKNIVSFYGAFFKLSPPGQRHQLWMVMELCAAGSVTDV
 VRMTSNQSLKEGWIAIYICREILQGLAHLHAHRVIHRDIKQONVLLTHNAEVKLVDFGVSAQVSRNNGRRN
 SFIGTPYWMapeVIDCDEDPRRSYDYSRVVSVGITAIEMAEGAPPLCNLQPLEALFVILRESAPTvkSS
 GWSRKFHNFMEKCTIKNFLFRPTSANMLQHPFVRDIKNERHVVEslTRHLTGIIKKRQKKGIPLIFEREE
 AIKEQYTVRRFRGPSCTHELLRLPTSSRCRPLRVLHGEPsQPRWLPDREEPQVQALQQLQGAARVFMPLQ
 ALDSAPKPLKGQAQAPQRLQGAARVFMPLQAQVKAKASKPLQMqIKAPPRLRRAARVLMPLQAQVRAPRL
 LQVQSQVSKKQQAQTQTSEPQDLQVPEEFQSQDQVPEQQRQGAPEQQQRHNQVPEQELEQNQAPEQPE
 VQEQAAPAQAGTEAEEPESLRVNAQVFLPLLsqDHHVLLPLHLDTQVLIPVEGQTEGSPQAQAWTLEPP
 QAIGSVQALIEGLSRDLLRAPNSNNSKPLGPLQTLMENLSSNRfYSQPEQAREKSKVSTLRQALAKRLS
 PKRFgAKSSWRPEKLELSDLEARRQRQRWEDIfnQHEEELRQVDKDESSDNDVfHsiQAEVQIE
 PLKPYIISNPkIEVQERSPSVpNNQDHAHHVKfSSSVpQRSLLEQAQKPIDIRQRSSQNQNwLAAESS
 SEEEsPVTGRRSsSPPYSTIDQKLLVDIHVPDGFkVgKISPPVYLtNEwWgYNALSEIFRNDWLTpAPV
 IQPPEEDGDYVELYDASADTDGDDDDeSNDTFEDTYDHANGNDdLDNqVDQANDVCKDHDDDNKfVDDV
 NNNYyEAPsCPRAsYGRDgSCKQDgYDgSRGKEEAYRgYGSHTANRSHGGSAASeDNaAIgDQEEHAANI
 GSERRGSEGDGGKGVVrTSEESGALGLNGEENCSETDGpGLKRPASQDFEYLQEEpGGGNEASNAIDSGA
 APSAPDHESDNKDISeSPTQSDfSANHSSpSKGSGMSADANfASAILYAGfVEVPEESPKQpSEVNVNPL
 YVSPACKKPLIHMYEKEFTSEICCGSLWGVNLLLGTRSNLYLMDRSGKADITKLIRRRPFRQIQVLEPLN
 LLITISGHKNRLRVYHLTWLRNKILNNDPEskRRQEEMLKTEEACKAIDKLTGCEHFsvLQHEETTYIAI
 ALKSSIHLYAWAPKSFDESTAIKVICIDQsADSEGdYMSYQAYIRILAKIQAADpVNRfKRPEdELLHLKLL
 KVFPtLDHKPVTVDLAIgSEKRLKIFFSSADgYHLIDAESEVMSDVTLPKNPLEIIPQNIILPDCLGI
 GMLLTFNAEALsVEANEQLFKKILEMwKDIPSSIAfEctQRTTGWGQKAIEVRSLQSRVLESELKRRSIK
 KLRFLCTRgDKLFFtSTLRNHHSRVYfMTLGKLEELQSNYDV

TRTRPLE - GFP Tag - V

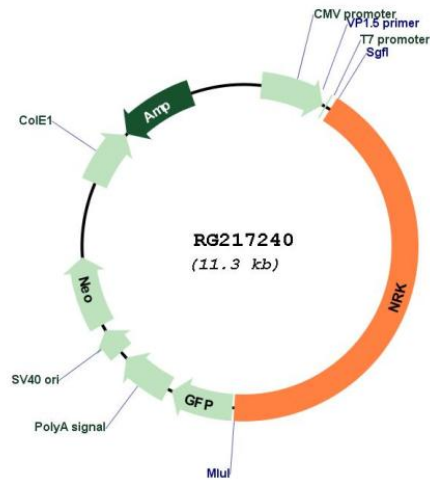
Restriction Sites: SgfI-MluI

Cloning Scheme:

Cloning sites used for ORF Shuttling:



Plasmid Map:



ACCN: NM_198465

ORF Size: 4746 bp

OTI Disclaimer: The molecular sequence of this clone aligns with the gene accession number as a point of reference only. However, individual transcript sequences of the same gene can differ through naturally occurring variations (e.g. polymorphisms), each with its own valid existence. This clone is substantially in agreement with the reference, but a complete review of all prevailing variants is recommended prior to use. [More info](#)

OTI Annotation: This clone was engineered to express the complete ORF with an expression tag. Expression varies depending on the nature of the gene.

Components: The ORF clone is ion-exchange column purified and shipped in a 2D barcoded Matrix tube containing 10ug of transfection-ready, dried plasmid DNA (reconstitute with 100 ul of water).

Reconstitution Method:

1. Centrifuge at 5,000xg for 5min.
2. Carefully open the tube and add 100ul of sterile water to dissolve the DNA.
3. Close the tube and incubate for 10 minutes at room temperature.
4. Briefly vortex the tube and then do a quick spin (less than 5000xg) to concentrate the liquid at the bottom.
5. Store the suspended plasmid at -20°C. The DNA is stable for at least one year from date of shipping when stored at -20°C.

RefSeq: [NM_198465.1](#), [NP_940867.1](#)

RefSeq Size: 8082 bp

RefSeq ORF: 4749 bp

Locus ID: 203447

UniProt ID: [Q7Z2Y5](#)

Cytogenetics: Xq22.3

Protein Families: Druggable Genome, Protein Kinase

Gene Summary: The mouse ortholog of this gene encodes a protein kinase required for JNK activation. The encoded protein may be involved in the induction of actin polymerization in late embryogenesis.[provided by RefSeq, Jun 2010]