

Product datasheet for **RG217233**

OPA1 (NM_130836) Human Tagged ORF Clone

Product data:

Product Type:	Expression Plasmids
Product Name:	OPA1 (NM_130836) Human Tagged ORF Clone
Tag:	TurboGFP
Symbol:	OPA1
Synonyms:	BERHS; largeG; MGM1; MTDPS14; NPG; NTG
Mammalian Cell Selection:	Neomycin
Vector:	pCMV6-AC-GFP (PS100010)
E. coli Selection:	Ampicillin (100 ug/mL)



[View online »](#)

ORF Nucleotide Sequence:

>RG217233 representing NM_130836
 Red=Cloning site Blue=ORF Green=Tags(s)

TTTTGTAATACGACTCACTATAGGGCGGCCGGAATTCGTCGACTGGATCCGGTACCGAGGAGATCTGCC
 GCC**GCGATCGCC**

ATGTGGCGACTACGTGGGCCGCTGTGGCCTGTGAGGTCTGCCAGTCTTTAGTGAACACAGCTCTGGAA
 TAAAAGGAAGTTTACCACTACAAAACTACATCTGGTTTTACGAAGCATTATCATTACATCATCCTAC
 CTTAAAGCTTCAACGACCCCAATTAAGGACATCCTTTCAGCAGTTCTCTCTCTGACAAAACCTTCTTTTA
 CGTAAACTGAAATTCTCTCCAATTAATATGGCTACCAGCCTCGCAGGAATTTTGGCCAGCAAGATTAG
 CTACGAGACTCTTAAACTTCGCTATCTCATACTAGGATCGGCTGTTGGGGTGGCTACACAGCCAAAA
 GACTTTTGATCAGTGGAAAGATATGATACCGGACCTTAGTGAATATAAATGGATTGTGCCTGACATTGTG
 TGGGAAATTGATGAGTATATCGATTTTGGAAAATAGAAAAGCCCTTCTAATTCAGAAGACCTTGTA
 AGTTAGCACCAGACTTTGACAAGATTGTTGAAAGCCTTAGCTTATTGAAGGACTTTTTACCTCAGGTTT
 TCCGGAAGAAACGGCTTTAGAGCAACAGATCGTGGATCTGAAAGTGACAAGCATTTTAGAAAGGGTCTG
 CTTGGTGAGCTCATTCTCTTACAACAACAAATTCAGAGCATGAAGAGGAAGCGCGCAGAGCCGCTGGCC
 AATATAGCAGGACTATGCCCAACAGAAGCGCAAGGTGTGAGACAAGAGAAAATTGACCAACTCAGGA
 AGAACTTCTGCACACTCAGTTGAAGTATCAGAGAATCTTGGAAAGATTAGAAAAGGAGAACAAGAATTG
 AGAAAATTAGTATTGCAGAAAGATGACAAAGGCATTCATCATAGAAAGCTTAAGAAATCTTTGATTGACA
 TGTATTCTGAAGTTCTTGATGTTCTCTCTGATTATGATGCCAGTTATAATACGCAAGATCATCTGCCACG
 GGTTGTTGGTTGGAGATCAGAGTGTGAAAGACTAGTGTGTTGAAAATGATTGCCAAGCTCGAATA
 TCCCAAGAGGATCTGGGAGATGATGACACGTTCTCCAGTTAAGGTGACTCTGAGTGAAGTCCCTCACC
 ATGTGGCCCTATTTAAAGATAGTTCTCGGGAGTTGATCTTACCAAAGAAGAAGATCTTGACGATTAAG
 ACATGAAATAGAACTTCGAATGAGGAAAAATGTGAAAGAAGGCTGTACCGTTAGCCCTGAGACCATATCC
 TTAATGTAAAAGCCCTGGACTACAGAGGATGGTGTGTTGACTTACCAGGTGTGATTAACTGTGA
 CATCAGGCATGGCTCCTGACACAAGGAAACTATTTTCAGTATCAGCAAAGCTTACATGCAGAATCCTAA
 TGCCATCATACTGTGATTCAAGATGGATCTGTGGATGCTGAACGCAGTATTGTTACAGACTTGGTCAGT
 CAAATGGACCCTCATGGAAGGAGAACCATATTCGTTTTGACCAAAGTAGACCTGGCAGAGAAAAATGTAG
 CCAGTCCAAGCAGGATTCAGCAGATAATTGAAGGAAAGCTTCCCAATGAAAGCTTTAGGTTATTTTGC
 TGTTGTAACAGGAAAAGGGAACAGCTCTGAAAGCATTGAAGCTATAAGAGAATATGAAGAAGAGTTTTTT
 CAGAATCAAAGCTCCTAAAGACAAGCATGCTAAAGGCACACCAAGTACTACAAGAAATTAAGCCTTG
 CAGTATCAGACTGCTTTTGGAAAATGGTACGAGAGTCTGTTGAACAACAGGCTGATAGTTTCAAAGCAAC
 ACGTTTTAACCTTGAAACTGAATGGAAGAATAACTATCCTCGCCTGCGGGAACTTGACCGGAATGAACTA
 TTTGAAAAGCTAAAAATGAAATCCTTGATGAAGTTATCAGTCTGAGCCAGGTTACACAAAAACATTGGG
 AGGAAATCCTTCAACAATCTTTGTGGGAAAGAGTATCAACTCATGTGATTGAAAACATCTACCTCCAGC
 TGCGCAGACCATGAATTCAGGAACCTTTAACACCACAGTGGATATCAAGCTTAAACAGTGGACTGATAAA
 CAACTTCTAATAAAGCAGTAGAGGTTGCTTGGGAGACCCTACAAGAAGAATTTCCCGCTTTATGACAG
 AACCGAAAAGGAAAGAGCATGATGACATATTTGATAAACTTAAAGAGGCCGTTAAGGAAGAAAGTATTAA
 ACGACACAAGTGAATGACTTTGCGGAGGACAGCTTGAGGTTATTCAACACAATGCTTTGGAAGACCGA
 TCCATATCTGATAAACAGCAATGGGATGCAGTATTTATTTTATGGAAGAGGCTCTGCAGGCTCGTCTCA
 AGGATACTGAAAATGCAATTGAAAACATGGTGGGTCCAGACTGGAAAAAGAGGTGTTTAACTGGAAGAA
 TCGGACCCAAGAACAGTGTGTTCACAATGAAACCAAGAATGAATTGGAGAAGATGTTGAAATGTAATGAG
 GAGCACCAGCTTATCTTGCAAGTATGAAATAACCACAGTCCGGAAGAACCTTGAATCCCGAGGAGTAG
 AAGTAGATCCAAGCTTGATTAAGGATACTTGGCATCAAGTTTATAGAAGACATTTTTTAAAAACAGCTCT
 AAACCTTGTAACTTTGCGAAGAGGTTTTTATTACTACCAAAGGCATTTTGTAGATTCTGAGTTGGAA
 TGCAATGATGTGGTCTTGTGTTTGGCGTATACAGCGCATGCTTGTATCACCGCAAATACTTTAAGGCAAC
 AACTTACAAATACTGAAGTTAGGCGATTAGAGAAAAATGTTAAAGAGGTATTGGAAGATTTTGTGTAAGA
 TGGTGAGAAGAAGATTAATTGCTTACTGGTAAACGCGTTCAACTGGCGGAAGACCTCAAGAAAGTTAGA
 GAAATTCAGAAAACTTGATGCTTTCATTGAAGCTTTCATCAGGAGAAA

AG**GCGACCG**ACGCGTACGCGGCCGCTCGAG - GFP Tag - GTTTAA

Protein Sequence: >RG217233 representing NM_130836
 Red=Cloning site Green=Tags(s)

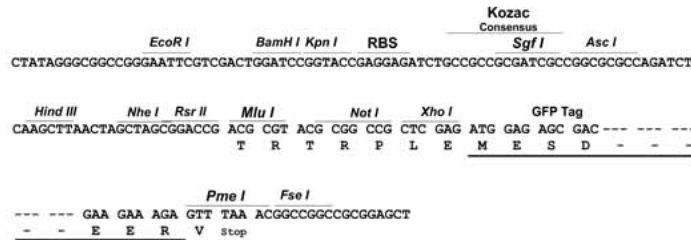
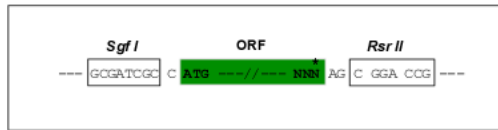
MWRLRRAAVACEVCQSLVKHSSGKIGSLPLQKLHLVSRSIYHSHHPTLKLQRPQLRTSFQQFSSLTNLPL
 RKLKFSPIKYGYQPRRNFWPARLATRLLKLYLILGSAVGGGYTAKKTFDQWKMIPDLSEYKWIVPDIV
 WEIDEYIDFEKIRKALPNSEDLVKLAPDFDKIVESLSLLKDDFTSGSPEETAFRATDRGSESDKHFRKGL
 LGELILLQQIQEHEEEARRAAGQYSTSYAQQRKRVSDKEKIDQLQEELLHTQLKYQRILERLEKENKEL
 RKLVLQKDDKGIHHRKLLKSLIDMYSEVLDVLSYDASYNQDHLPRVVVVGDSAGKTSVLEMIQARI
 FPRGSGEMMTRSPVKVTLSEGPHHVALFKDSSREFDLTKEEDLAALRHEIELRMRKNVKEGCTVSPETIS
 LNVKGPGLQRMVLDLPGVINTVTSGMAPDTKETIFSISKAYMQNPNAIILCIQDGSVDAERSIVTDLVS
 QMDPHGRRTIFVLTKVDLAEKNVASPSRIQQIIEGKLFPMKALGYFAVVTGKGNSSSEIEAIREYEEFF
 QNSKLLKTSMLKAHQVTRNLSLAVSDCFWKMVRESVEQQADSFKATRFNLETEWKNNYPRLRELDREL
 FEKAKNEILDEVISLSQVTPKHWEIILQQLSERVSTHVIENIYLPAAQTMNSGTFNTTVDIKLKQWTDK
 QLPNKAVEVAVETLQEEFSRFMTEPKGKEHDDIFDKLKEAVKEESIKRHKWDFAEADSLRVIQHNAEDR
 SISKQWDAAIYFMEEALQARLKDTENAIENMVGPDWKKRWLYWKNRTQEQCVMNETKNELEKMLKCN
 EHPAYLASDEITTVRKNLESRGVEVPSLIKDTWHQVYRRHFLKKTALNHCNLCRRGFYQQYRHFVDSLE
 CNDVVLFWRIQRMLAITANTLRQQLTNTEVRRLEKNVKEVLEDFAEDEKIKLLTGKRVQLAEDLKKVR
 EIQEKLDAFIEALHQEK

SGPTRRRLE - GFP Tag - V

Restriction Sites: SgfI-RsrII

Cloning Scheme:

Cloning sites used for ORF Shuttling:

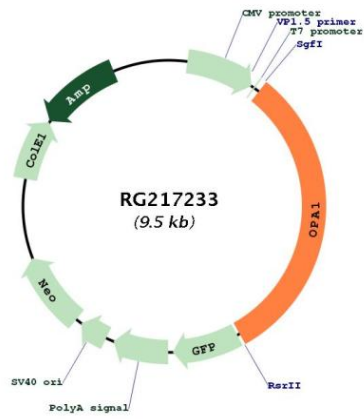


ACCN: NM_130836

ORF Size: 2991 bp

OTI Disclaimer:	The molecular sequence of this clone aligns with the gene accession number as a point of reference only. However, individual transcript sequences of the same gene can differ through naturally occurring variations (e.g. polymorphisms), each with its own valid existence. This clone is substantially in agreement with the reference, but a complete review of all prevailing variants is recommended prior to use. More info
OTI Annotation:	This clone was engineered to express the complete ORF with an expression tag. Expression varies depending on the nature of the gene.
Components:	The ORF clone is ion-exchange column purified and shipped in a 2D barcoded Matrix tube containing 10ug of transfection-ready, dried plasmid DNA (reconstitute with 100 ul of water).
Reconstitution Method:	<ol style="list-style-type: none">1. Centrifuge at 5,000xg for 5min.2. Carefully open the tube and add 100ul of sterile water to dissolve the DNA.3. Close the tube and incubate for 10 minutes at room temperature.4. Briefly vortex the tube and then do a quick spin (less than 5000xg) to concentrate the liquid at the bottom.5. Store the suspended plasmid at -20°C. The DNA is stable for at least one year from date of shipping when stored at -20°C.
RefSeq:	NM_130836.1 , NP_570849.1
RefSeq Size:	5975 bp
RefSeq ORF:	2994 bp
Locus ID:	4976
UniProt ID:	O60313
Cytogenetics:	3q29
Gene Summary:	The protein encoded by this gene is a nuclear-encoded mitochondrial protein with similarity to dynamin-related GTPases. The encoded protein localizes to the inner mitochondrial membrane and helps regulate mitochondrial stability and energy output. This protein also sequesters cytochrome c. Mutations in this gene have been associated with optic atrophy type 1, which is a dominantly inherited optic neuropathy resulting in progressive loss of visual acuity, leading in many cases to legal blindness. [provided by RefSeq, Aug 2017]

Product images:



Circular map for RG217233