

## Product datasheet for **RG217229**

### Epithelial Stromal Interaction 1 (EPSTI1) (NM\_033255) Human Tagged ORF Clone

#### Product data:

Product Type:	Expression Plasmids
Product Name:	Epithelial Stromal Interaction 1 (EPSTI1) (NM_033255) Human Tagged ORF Clone
Tag:	TurboGFP
Symbol:	Epithelial Stromal Interaction 1
Synonyms:	BRESI1
Mammalian Cell Selection:	Neomycin
Vector:	pCMV6-AC-GFP (PS100010)
E. coli Selection:	Ampicillin (100 ug/mL)
ORF Nucleotide Sequence:	>RG217229 representing NM_033255 Red=Cloning site Blue=ORF Green=Tags(s)

TTTTGTAATACGACTCACTATAGGGCGGCCGGAATTCGTCGACTGGATCCGGTACCGAGGAGATCTGCC  
GCC**CGATCGCC**

ATGAACACCCGCAATAGAGTGGTGAACCCGGGCTCGGCGCTCCCTGCCTCCCGCCGACCCGGGATC  
CCCAGGACCCCTTCTGGGCGGCAAGGGGAGCTGAGCCCCGTGGAAGACCAGAGAGAGGGTTTGAGGCAGC  
CCCTAAGGGCCCTTCGCGGGAGAGCGTCGTGCACGCGGCCAGAGGCGACAAGTGCATACACCTTGATA  
GCACCAAAATAAAACCGAGAAATGAGATACAAAGAATTGCGGAGCAGGAGCTGGCCAACCTGGAGAAGT  
GGAAGGAGCAGAACAGAGCTAAACCGGTTACCTGGTCCCAGACGGCTAGGTGGAAGCCAGTCAGAAAC  
TGAAGTCAGACAGAAACAACACTCCAGCTGATGCAATCTAAATACAAGCAAAAGCTAAAAAGAGAAGAA  
TCTGTAAGAATCAAGAAGGAAGCTGAAGAAGCTGAACTCCAAAAAATGAAGGCAATTCAGAGAGAGAAGA  
GCAATAAACTGGAGGAGAAAAAAGACTTCAAGAAAACCTTAGAAGAGAAGCATTAGAGAGCATCAGCA  
ATACAAAACCGCTGAGTTCTTGAGCAAACCTGAACACAGAATCGCCAGACAGAAAGTGCCTGTCAAAGTGCT  
GTTTGTGGCCACAATCCTCAACATGGGCCAGAAGCTGGGCTTACAGAGATTCTCTAAAGGCAGAAGAAA  
ACAGAAAATTGCAAAAGATGAAGGATGAACAACATCAAAAGAGTGAATTACTGAACTGAAACGGCAGCA  
GCAAGAGCAAGAAAGAGCCAAAATCCACCAGACTGAACACAGGAGGTAATAATGCTTTTCTGGACCGA  
CTCCAAGGCAAAAGTCAACCAGGTGGCTCGAGCAATCTGGAGGCTGTTGGAATATGAATAGCGGTAACA  
GCTGGGGTATA

**ACGCGT**ACGCGGCCGCTCGAG - GFP Tag - GTTTAA



[View online »](#)

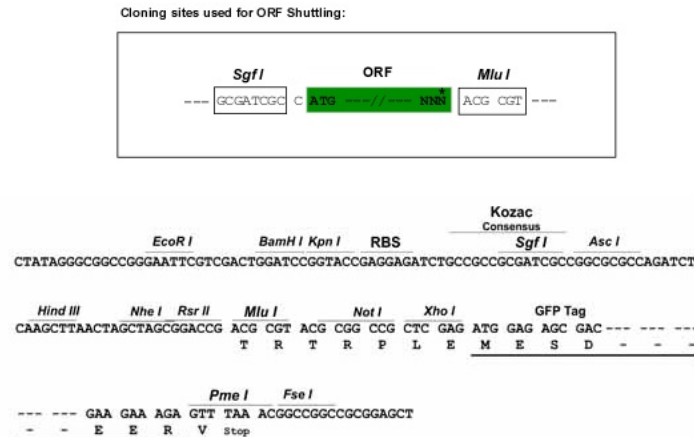
**Protein Sequence:** >RG217229 representing NM\_033255  
Red=Cloning site Green=Tags(s)

MNTRNRVNSGLGASPARPTRDPQDPSSGRQGELSPVEDQREGLEAAPKGPSRESVVHAGQRRTSAYTLI  
 APNINRRNEIQRIAEQELANLEKWKQNRAPVHLVPRRLGGSQSETEVRQKQQLQLMQSKYKQKLRREE  
 SVRIKKEAEEAELQKMKAIQREKSNKLEEKRLQENLRREAFREHQYKTAFLSKLNTESPDRSACQSA  
 VCGPQSSTWARSWAYRDSLKAEENRKLQKMKDEQHOKSELLELKRQQEQERAKIHQTEHRRVNN AFLDR  
 LQGKSQPGGLEQSGGCWNMNSGNSWGI

TRTRPLE - GFP Tag - V

**Restriction Sites:** SgfI-MluI

**Cloning Scheme:**



**ACCN:** NM\_033255

**ORF Size:** 921 bp

**OTI Disclaimer:** The molecular sequence of this clone aligns with the gene accession number as a point of reference only. However, individual transcript sequences of the same gene can differ through naturally occurring variations (e.g. polymorphisms), each with its own valid existence. This clone is substantially in agreement with the reference, but a complete review of all prevailing variants is recommended prior to use. [More info](#)

**OTI Annotation:** This clone was engineered to express the complete ORF with an expression tag. Expression varies depending on the nature of the gene.

**Components:** The ORF clone is ion-exchange column purified and shipped in a 2D barcoded Matrix tube containing 10ug of transfection-ready, dried plasmid DNA (reconstitute with 100 ul of water).

**Reconstitution Method:**

1. Centrifuge at 5,000xg for 5min.
2. Carefully open the tube and add 100ul of sterile water to dissolve the DNA.
3. Close the tube and incubate for 10 minutes at room temperature.
4. Briefly vortex the tube and then do a quick spin (less than 5000xg) to concentrate the liquid at the bottom.
5. Store the suspended plasmid at -20°C. The DNA is stable for at least one year from date of shipping when stored at -20°C.

**RefSeq:** [NM\\_033255.5](#)

**RefSeq Size:** 1529 bp

**RefSeq ORF:** 924 bp

**Locus ID:** 94240

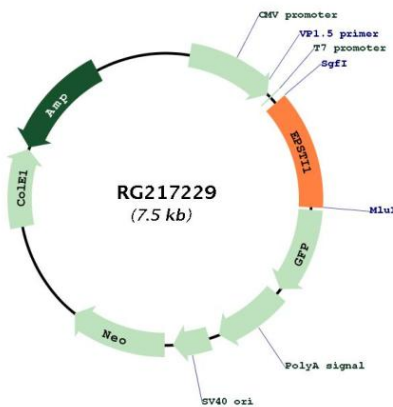
**UniProt ID:** [Q96J88](#)

**Cytogenetics:** 13q14.11

**Protein Families:** Transmembrane

**Gene Summary:** The protein encoded by this gene has been shown to promote tumor invasion and metastasis in some invasive cancer cells when overexpressed. Expression of this gene has been shown to be upregulated by direct binding of the Kruppel like factor 8 protein to promoter sequences. The translated protein interacts with the amino terminal region of the valosin containing protein gene product, resulting in the nuclear translocation of the nuclear factor kappa B subunit 1 gene product, and activation of target genes. Overexpression of this gene has been observed in some breast cancers and in some individuals with systemic lupus erythematosus (SLE). [provided by RefSeq, Sep 2016]

### Product images:



Circular map for RG217229