

Product datasheet for **RG217210**

FBXO21 (NM_015002) Human Tagged ORF Clone

Product data:

Product Type:	Expression Plasmids
Product Name:	FBXO21 (NM_015002) Human Tagged ORF Clone
Tag:	TurboGFP
Symbol:	FBXO21
Synonyms:	FBX21
Mammalian Cell Selection:	Neomycin
Vector:	pCMV6-AC-GFP (PS100010)
E. coli Selection:	Ampicillin (100 ug/mL)



[View online »](#)

ORF Nucleotide Sequence:

>RG217210 representing NM_015002
 Red=Cloning site Blue=ORF Green=Tags(s)

TTTTGTAATACGACTCACTATAGGGCGGCCGGAATTCGTCGACTGGATCCGGTACCGAGGAGATCTGCC
 GCC**GCGATCGCC**

ATGGCGGCGGCAGCAGTCGACAGCGCGATGGAGGTGGTCCGGCGCTGGCGGAGGAGCCGCGCCGGAGG
 TAGCGGGCCTCAGCTGCCTCGTCAACCTGCCGGGTGAGGTGCTGGAGTACATCCTGTGCTCGGGCTCGCT
 GACGGCCGCCGACATCGGCCGTGTCTCCAGCACCTGCCGGCGGCTGCGCGAGCTGTGCCAGAGCAGCGGG
 AAGGTGTGGAAGGAGCAGTTCGGGTGAGGTGGCCTTCCCTTATGAAACACTACAGCCCCACCGACTACG
 TCAATTGGTTGGAAGAGTATAAAGTTCGGCAAAAAGCTGGGTTAGAAGCGCGGAAGATTGTAGCCTCGTT
 CTCAAAGAGGTTCTTTTCAGAGCACGTTCTTGTAAATGGCTTCAGTGACATTGAGAACCTGAAGGACCA
 GAGATTTTTTTGAGGATGAAGTGGTGTATCCTAAATATGGAAGGAAGAAAAGCTTTGACCTGGAAAT
 ACTACGCAAAAAAATCTTTACTACCTCGGCAACAGAAGATCTTAAATATCTTAAGGCCTTTCTTCA
 GCAGCCAGATGACTATGAGTCGTATCTGAAGGTGCTGTATATATTGACCAGTACTGCAATCCTCTCTCC
 GACATCAGCCTCAAAGACATCCAGGCCCAAATTGACAGCATCGTGGAGCTTGTTCGAAAAACCTTCGGG
 GCATAAACAGTCGCCACCCAGCTTGGCCTTCAAGGCAGGTGAATCATCCATGATAATGGAATAGAACT
 CCAGAGCCAGGTGCTGGATGCCATGAACATGTCTTTACGACCAACTGAAGTTCAGGGGAATCGAATG
 GATTACTATAATGCCCTCAACTATATATGCATCAGGTTTTGATTTCGAGAACAGGAATCCCAATCAGCA
 TGTCTCTGCTCTATTTGACAATTGCTCGGCAGTTGGGAGTCCCCTGGAGCCTGTCAACTCCCAAGTCA
 CTTCTTATTAAGTGGTCAATGTCAAGAAGGTGTTACAGAGAATGGTGGAAACCTGTTAAGCCTGGGGAA
 CACTGTATGGGGTGGTCAATGTCAAGAAGGTGTTACAGAGAATGGTGGAAACCTGTTAAGCCTGGGGAA
 CGGGGAAGGCATCGACCAGTCATACCAGCTCTGAGAGACTCGTGGATCTCTATCTGGCAATGTACCCG
 GACCAGGTGCAGCTTCTCTCTCCAAGCCAGGCTTTACTTCCACCTGGGAATCTGGCCAGAGAAGTGC
 TTGACATCCTCCAGCACATCCAAACCTAGACCCGGGCGCAGCACGGGGCGGTGGGCTACCTGGTGCAGCA
 CACTCTAGAGCACATTGAGCGCAAAAAGGAGGAGTGGGCGTAGAGGTGAAGCTGCGCTCCGATGAGAAG
 CACAGAGATGTCTGCTACTCCATCGGGCTCATTATGAAGCATAAGAGGTATGGCTATAACTGTGTGATCT
 ACGGCTGGGACCCACCTGCATGATGGGACACGAGTGGATCCGGAACATGAACGTCCACAGCCTGCCGCA
 CGGCCACCACCAGCCTTTCTATAACGTGCTGGTGGAGGACGGCTCCTGTGATACGCAGCCCAAGAAAAC
 TTGGAATATAACGTGGAGCCTCAAGAAATCTCACACCCTGACGTGGGACGCTATTTCTCAGAGTTTACTG
 GCACTCACTACATCCCAACGCAGAGCTGGAGATCCGGTATCCAGAAGATCTGGAGTTTGTCTATGAAAC
 GGTGCAGAATATTTACAGTGCAAAGAAAGAGAACATAGATGAG

ACGCGTACGCGGCCGCTCGAG – GFP Tag – GTTTAA

Protein Sequence:

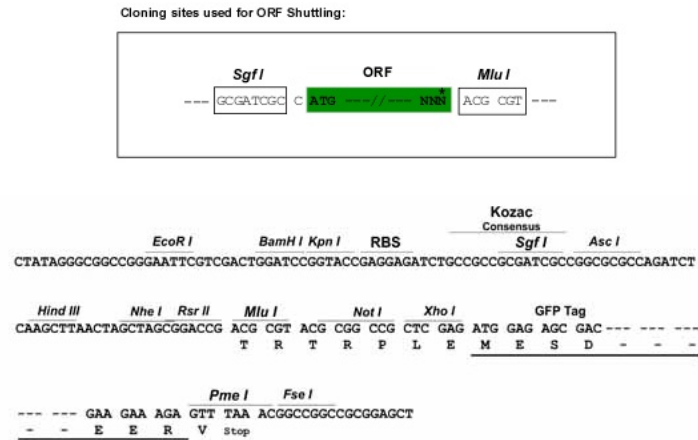
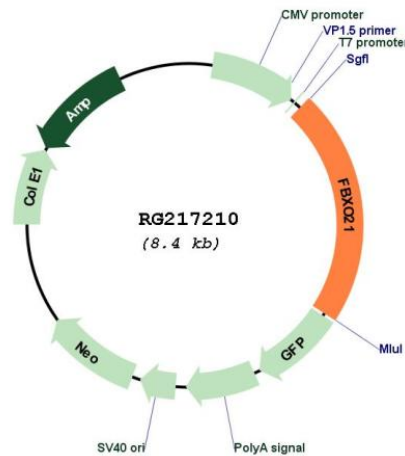
>RG217210 representing NM_015002
 Red=Cloning site Green=Tags(s)

MAAAAVDSAMEVVPALAEAAPEVAGLSCLVNLPGEVLEYILCCGSLTAADIGRVSSTCRRLRELQSSG
 KVKWEQFRVRWPSLMKHYSPTDYVNWLEEKVVRQKAGLEARKIVASFSCRFFSEHVPCNGFSDIENLEGP
 EIFFEDELVCILNMEGRKALTWKYYAKKILYYLRQKILNKLKAFLLQPPDDYESYLEGAVYIDQYCNPLS
 DISLKDIIQAQIDSIVELVCKTLRGINSRHPSLAFKAGESSMIMEIELQSQVLDAMNYVLYDQLKFKGNRM
 DYYNALNLYMHQVLIIRRTGIPISMLLYLTIARQLGVPLEPVNFP SHFLLRWCQGAEGATLDIFDYIYID
 AFGKQKQLTVKECEYLIGQHVTAAALYGVVNVKVLQRMVGNLLSLGKREGIDQSYQLLRDSDLYLAMY
 DQVQLLLLQARLYFHLGIWPEKVL DILQHIQTLDPGQHGA VGYLVQHTLEHIERKKEEVGVEVKLR SDEK
 HRDVCYSIGLIMKHKRYGNCVIYGDPTCMMGHEWIRNMNVHSLPHGHHPFYNVLVEDGSCRYAAQEN
 LEYNVEPQEISHPDVGRYFSEFTGTHYIPNAELEIRYPEDLEFVYETVQNIYSAKKENIDE

TRTRPLE – GFP Tag – V

Restriction Sites:

SgfI-MluI

Cloning Scheme:

Plasmid Map:


ACCN: NM_015002
 ORF Size: 1863 bp

OTI Disclaimer:	The molecular sequence of this clone aligns with the gene accession number as a point of reference only. However, individual transcript sequences of the same gene can differ through naturally occurring variations (e.g. polymorphisms), each with its own valid existence. This clone is substantially in agreement with the reference, but a complete review of all prevailing variants is recommended prior to use. More info
OTI Annotation:	This clone was engineered to express the complete ORF with an expression tag. Expression varies depending on the nature of the gene.
Components:	The ORF clone is ion-exchange column purified and shipped in a 2D barcoded Matrix tube containing 10ug of transfection-ready, dried plasmid DNA (reconstitute with 100 ul of water).
Reconstitution Method:	<ol style="list-style-type: none">1. Centrifuge at 5,000xg for 5min.2. Carefully open the tube and add 100ul of sterile water to dissolve the DNA.3. Close the tube and incubate for 10 minutes at room temperature.4. Briefly vortex the tube and then do a quick spin (less than 5000xg) to concentrate the liquid at the bottom.5. Store the suspended plasmid at -20°C. The DNA is stable for at least one year from date of shipping when stored at -20°C.
RefSeq:	NM_015002.3
RefSeq Size:	4227 bp
RefSeq ORF:	1866 bp
Locus ID:	23014
UniProt ID:	O94952
Cytogenetics:	12q24.22
Domains:	F-box
Gene Summary:	This gene encodes a member of the F-box protein family which is characterized by an approximately 40 amino acid motif, the F-box. The F-box proteins constitute one of the four subunits of ubiquitin protein ligase complex called SCFs (SKP1-cullin-F-box), which function in phosphorylation-dependent ubiquitination. The F-box proteins are divided into 3 classes: Fbws containing WD-40 domains, Fbls containing leucine-rich repeats, and Fbxs containing either different protein-protein interaction modules or no recognizable motifs. The protein encoded by this gene belongs to the Fbxs class. Alternative splicing of this gene generates 2 transcript variants. [provided by RefSeq, Jul 2008]