

Product datasheet for **RG217199**

PDE9A (NM_001001581) Human Tagged ORF Clone

Product data:

Product Type:	Expression Plasmids
Product Name:	PDE9A (NM_001001581) Human Tagged ORF Clone
Tag:	TurboGFP
Symbol:	PDE9A
Synonyms:	HSPDE9A2
Mammalian Cell Selection:	Neomycin
Vector:	pCMV6-AC-GFP (PS100010)
E. coli Selection:	Ampicillin (100 ug/mL)



[View online »](#)

ORF Nucleotide Sequence:

>RG217199 representing NM_001001581
 Red=Cloning site Blue=ORF Green=Tags(s)

TTTTGTAATACGACTCACTATAGGGCGGCCGGAATTCGTCGACTGGATCCGGTACCGAGGAGATCTGCC
 GCC**CGCATCGCC**

ATGGACGCATTCAAGAAGCACTCCGTACAAAGTGAGACCTGTGGCCATCAAGCAACTCTCCGCTGGTGTCC
 AGGACAAGAGAACCACAAGCCGTGGCCAGTCTGCTGAGAGACCACTGAGGGACAGACGGGTTGTGGCCCT
 GGAGCAGCCCCGGAGGGAAGGAGCATTTGAAAAGTGGACAGGTAGAGCCCAGGCCAGAGACCCAGGGC
 TGCTACCAGGAAGGCCAGCGCATCCCTCCAGAGAGAGAAGAATTAATCCAGAGCGTGCTGGCGCAGGTTG
 CAGAGCAGTTCTCAAGAGCATTCAAAAATCAATGAACTGAAAGCTGAAGTTGCAAACTACTTGGCTGTCT
 AGAGAAACCGCTGGAATTGGAAGGACTAAAAGTGGTGGAGATTGAGAAATGCAAGAGTGACATTAAGAAG
 ATGAGGGAGGAGCTGGCGCCAGAAGCAGCAGGACCAACTGCCCTGTAAGTACAGTTTTTTGGATAACC
 ACAAGAAGTTGACTCCTCGACGCGATGTCCCCTTACCCCAAGTACCTGCTCTCCAGAGACCATCGA
 GGCCCTGCGGAAGCCGACCTTTGACGTCTGGCTTTGGGAGCCCAATGAGATGCTGAGCTGCCTGGAGCAC
 ATGTACCACGACCTCGGGCTGGTCAGGGACTTCAGCATCAACCCTGTACCCTCAGGAGGTGGCTGTCT
 CGGTCCACGACAACACAGAAAACACCCCTTCCACAACCTCCGGCACTGCTTCTGCGTGGCCAGATGAT
 GTACAGCATGGTCTGGCTCTGCAGTCTCCAGGAGAAGTTCTCACAAACGGATATCCTGATCCTAATGACA
 GCGGCCATCTGCCACGATCTGGACCATCCCGGCTACAACAACACGTACCAGATCAATGCCCGCACAGAGC
 TGGCGGTCCGCTACAATGACATCTACCCTGGAGAACCACCACTGCGCCGTGGCCTTCCAGATCCTCGC
 CGAGCCTGAGTGAACATCTTCTCCAACATCCCACCTGATGGGTTCAAGCAGATCCGACAGGGAATGATC
 ACATTAATCTTGGCCACTGACATGGCAAGACATGCAGAAATTATGGATTCTTTCAAAGAGAAAATGGAGA
 ATTTTGACTACAGCAACGAGGAGCAGATGACCCCTGCTGAAGATGATTTTGATAAAAATGCTGTGATCTC
 TAACGAGTCCGTCCTCAATGGAAGTCGACAGACCTTGGGTGGACTGTTTATTAGAGGAATATTTTATGCAG
 AGCGACCGTGAGAAGTCAGAAGGCTTCTGTGGCACCGTTCATGGACCGAGACAAGTGACCAAGGCCA
 CAGCCCAGATTGGGTTCAAGTTTGTCTGATCCCAATGTTTGAACAGTGACCAAGCTCTTCCCAT
 GGTGAGGAGATCATGCTGCAGCCACTTGGGAATCCCGAGATCGCTACGAGGAGCTGAAGCGGATAGAT
 GACGCCATGAAAGAGTTACAGAAGAAGACTGACAGCTTGCAGTCTGGGGCCACCGAGAAGTCCAGAGAGA
 GAAGCAGAGATGTGAAAAACAGTGAAGGAGACTGTGCC

ACGGGCCGCTCGAG - GFP Tag - GTTTAA

Protein Sequence:

>RG217199 representing NM_001001581
 Red=Cloning site Green=Tags(s)

MDAFRSTPYKVRPVAIKQLSAGVEDKRTTSRQSAERPLRDRRVVGLLEQPRREGAFESGQVEPRPREPQG
 CYQEQRIPPEREEELIQSVLAQVAEQFSRAFKINELKAEVANHLAVLEKRVLEGLKVVEIEKCKSDIKK
 MREELAARSSRTNCPCKYSFLDNHKKLTPRRDVPTYPKYLLSPETIEALRKPTFDVWLWEPNEMLSCLEH
 MYHDLGLVRDFSINPVTLRRWLFVHDNYRNNPFHNRHCFVQAQMMYSMWLCSLQEKFSQTDILILMT
 AAI CHDL DHPGYNNTYQINARTE LAVRYNDISPLENHHC AVAFQILA EPECNIFSNIPPDGFKIRQGM I
 TLILATDMARHAEIMDSFKEKMFNDYSNEEHMTLLKMLIKCCDISNEVRPMEVAEPWVDCLEEFYFMQ
 SDREKSEGLPVAPFMDRDKVTKATAQIGFIKFLVLPMPFETVTKLFPMVVEIMLQPLWESRDREELKRID
 DAMKELQKKTDSLTSGATEKSRERSRDVKNSEGDCA

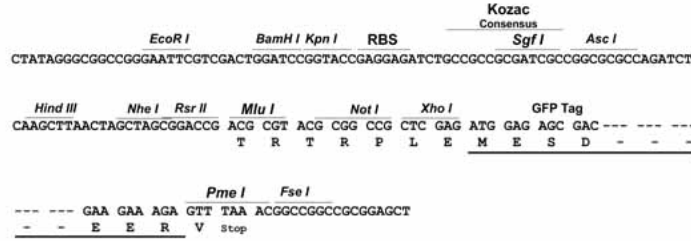
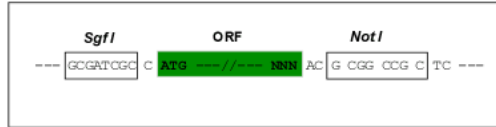
TRPLE - GFP Tag - V

Restriction Sites:

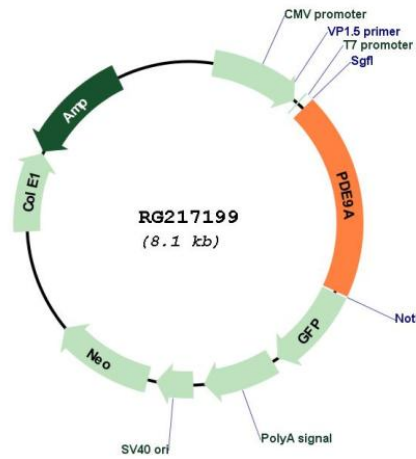
Sgfl-NotI

Cloning Scheme:

Cloning sites used for ORF Shuttling:



Plasmid Map:



ACCN:	NM_001001581
ORF Size:	1578 bp
OTI Disclaimer:	The molecular sequence of this clone aligns with the gene accession number as a point of reference only. However, individual transcript sequences of the same gene can differ through naturally occurring variations (e.g. polymorphisms), each with its own valid existence. This clone is substantially in agreement with the reference, but a complete review of all prevailing variants is recommended prior to use. More info
OTI Annotation:	This clone was engineered to express the complete ORF with an expression tag. Expression varies depending on the nature of the gene.
Components:	The ORF clone is ion-exchange column purified and shipped in a 2D barcoded Matrix tube containing 10ug of transfection-ready, dried plasmid DNA (reconstitute with 100 ul of water).
Reconstitution Method:	<ol style="list-style-type: none">1. Centrifuge at 5,000xg for 5min.2. Carefully open the tube and add 100ul of sterile water to dissolve the DNA.3. Close the tube and incubate for 10 minutes at room temperature.4. Briefly vortex the tube and then do a quick spin (less than 5000xg) to concentrate the liquid at the bottom.5. Store the suspended plasmid at -20°C. The DNA is stable for at least one year from date of shipping when stored at -20°C.
RefSeq:	NM_001001581.1 , NP_001001581.1
RefSeq Size:	1954 bp
RefSeq ORF:	1581 bp
Locus ID:	5152
UniProt ID:	O76083
Cytogenetics:	21q22.3
Protein Families:	Druggable Genome
Protein Pathways:	Progesterone-mediated oocyte maturation, Purine metabolism
Gene Summary:	The protein encoded by this gene catalyzes the hydrolysis of cAMP and cGMP to their corresponding monophosphates. The encoded protein plays a role in signal transduction by regulating the intracellular concentration of these cyclic nucleotides. Multiple transcript variants encoding several different isoforms have been found for this gene. [provided by RefSeq, Jul 2008]