

Product datasheet for **RG217186**

HELB (NM_033647) Human Tagged ORF Clone

Product data:

Product Type:	Expression Plasmids
Product Name:	HELB (NM_033647) Human Tagged ORF Clone
Tag:	TurboGFP
Symbol:	HELB
Synonyms:	DHB; hDHB
Mammalian Cell Selection:	Neomycin
Vector:	pCMV6-AC-GFP (PS100010)
E. coli Selection:	Ampicillin (100 ug/mL)
ORF Nucleotide Sequence:	>RG217186 representing NM_033647 Red=Cloning site Blue=ORF Green=Tags(s)

TTTTGTAATACGACTCACTATAGGGCGGCCGGAATTCGTCGACTGGATCCGGTACCGAGGAGATCTGCC
GCC**CGATCGCC**

ATGGCCAGGTCGAGTCCGTACCTGCGCCAACCTCAGGGACCTCTGCTCCCACCCAGGGATCTGGTGGAGG
AGGACGACGACTACCTAAACGACGACGTGGAGGAGGATGAAGAGTCCGTGTTTCATCGACGCCGAGGAGCT
CTGCAGTGGGGCGTAAAGGCTGGCAGCCTCCCGGGTGCCTCCGCGTTTCTATTTGTGATGAAAACACA
CAAGAGACATGTAAGTGTGGACGTTTTCCGATAACAGGTGCTTGGTGGAGAGTGAAGGTACAAGTAA
AGCCTGTGGTGGGATCAAGGAGCTATCAATATCAAGTTCAAGGATTTCCGTCTTACTTTTTGCAGTCTGA
TATGTCACCACCAATCAAAAACATATCTGTGCTCTTTCTTAAAGAGTGTGAGGTCTCCAGTGATGAT
GTTAATAAATTTTTAACATGGGTAAGGAGGTATCAAACCTACAAAACCTAAACTTTGAAAATCTTAGGG
AAACACTAAGAATTTCCACAAGGAACTGGAAGGAAAGATCAAAAGCAGCCTACACAGAATGGTCAGGA
AGAGTTGTTCTAGACAATGAGATGAGTCTTCTCTGGAAAACACAATTCATTTAGAAATGTAATGACA
GCTTTGCAGTTTCCGAAGATAATGGAATTCCTCCAGTCTTCTGCCTCGACACTTTAAATGGATCATAG
GGTCAGGTTCTAAAGAGATGTTGAAAGAGATAGAAGAGATTTAGGTACACATCCGTGAAAACCTGGATT
TAGTAAAATAACCTACAGAGAGTGGAACTCCTGCGATGTGAGGCAAGTTGGATAGCATTGTGTCAGTGT
GAGTCTTCTCCAGCTGATGACTGATTTGGAGAAGAATGCATTAATAATGTATTCCAGACTGAAGCAGA
TATGTAGAGAAGATGGGCACACATATGTTGAAGTGAATGACTTAACTTTGACATTGTCAAATCATATGTC
ATTTATGCTGCTTCCAGAGTCTCTGAAGTTTTTGAAGGATATTGGTGTGGTGACATATGAGAAGTCTGT
GTCTTCCCTTATGACCTTACCATGCTGAAAGAGCCATCGCCTTTTCAATTTGTGACCTGATGAAGAAAC
CTCCTTGGCATTATGTGTCGATGTCGAAAAGGTGCTTGCCTCTATTACACCACAAAACCTGAGAATTC
AAGCGATGATGCATTGAATGAGAGCAAACCTGATGAAGTAAAGATTAGAAAATCCTGTGGATGTTGTGGAC
ACACAGGACAATGGTGACCATATTTGGACTAATGGTAAAATGAAATTAATGCAGAAATAAGTGAAGTTC
AGCTGGATCAGGATCAGGTTGAAGTCCACTGGATCGGGATCAGGTGGCTGCTTTGGAAATGATTTGCTC
CAATCCTGTGACAGTCATAAGTGGAAAGGTGGATGTGGGAAGACCACAATCGTTAGCCGCTTTTTAAG



[View online »](#)

CATATAGAGCAGTTGGAAGAAAGAGAAGTAAAAAAGCCTGTGAAGATTTTGAACAAGACCAGAATGCTT
 CAGAAGAATGGATTACCTTTACTGAGCAAAGTCAACTAGAGGCGGACAAGGCTATAGAAGTTTTGCTCAC
 AGCACCTACAGGGAAAGCAGCTGGCTTACTAAGACAGAAAACCTGGTCTTCATGCCTACACACTGTGTGAG
 GTCAATTATAGCTTCTATTATGAGGACTCAAACAATGATGACCACAACAAACCATGGAAATTTTCTTCGG
 TTAGAGTTCTGGTTGGGATGAAGGGAGTTTGGTATCTGTAGGAATCTTCAAATCGGTCTTAAATTTATT
 GTGTGAGCACTCCAACTTTCTAAGCTTATTATCCTTGGTGACATTAGACAGTTACCCAGTATTGAACTT
 GGTAATGCTGAAAGATCTTTTTGAGACTCTTAAGTCAAGAAATTGTGCTATTGAGTAAAGACAAACC
 ATAGAGCAGAATCTCAGCTCATTGTGGACAATGCTACAAGAATCTCAAGACGCCAATTTCCAAAATTTGA
 TGCAGAATAAATATCTCTGATAATCCAACATTACCCATCTCAATTCAAGATAAGACATTTATTTTTGTC
 AGGCTCCCAGAAGAGGATGCCAGTTCTCAGTCATCTAAAATAATCATCACTCTTGTTTTATATTCTGCAG
 TTAATACTTTACTACAAGAAAATAACTTACAAAATGCAAAAACATCACAATTTATTGCATTTAGAAGGCA
 AGACTGTGATCTAATTAATGACTGCTGCTGCAAACTACACAGGCCACCTACCAAAGACCATCAGAGT
 AGACTTGTTTTTGGAATTGGTGATAAAATTTGTTGTACCAGGAATGCATACCTCTCAGACTTACTACCTG
 AAAATATCTCTGGAAGTCAGAAAATAATGATCTAGATGCCAGTAGTGAAGACTTTTCTGGTACGCTTCC
 TGATTTTGTCAAAAATAAGCGTGACTTTGAAAGTAACTTCGACTGTGCAATGGAGAGATATTTTTCATA
 ACAAATGATGAACTGATGTAACCTTTTGGAAAGAGAAGATCTTTGACCATTAATAATATGGCTGGCCTGG
 AAGTAACTGTGGATTTTAAAGAACTAATGAAATATTGTGCGATAAAAACATGCATGGGCAAGAATTTCA
 CACTTTTTCAGGGGTCGAGGAGCAAACAGTTGTCTATGTGGTGGGGAAGGCGGGCCGACACTGGCAG
 CATGTCTACACCGCCGTGACCAGGGGCCGCTGCCGAGTGTATGTGATTGCAGAGGAGTCTCAGCTCCGGA
 ATGCCATTATGAAAAACAGTTTTCTAGAAAAACTCGTTTGAACATTTCTTGCAAAAGTAAAGCTCTCCTC
 TAGCGGCGCACCTCCAGCAGATTTCCGTCCCCACGGAAGAGCTCTGGAGACAGTGGAGGACCCAGCACA
 CCGTCAGCATCTCACTCCCTGTAGTACAGACCACGCCATGACAAATGATGTCACTGGAGCGAGGCCCT
 CTTGCGCTGATGAGAGGACACTACCTTTGCTGAAAGATGGCAATTATCTTCACTGATGGAGTAGATAC
 AGATGATGATTTACAAAATCGCGAGCATCCAAAAGAACCTGTGGTGTGAATGATGAAAGTCCAAGC
 AAAATTTTTATGGTGGGAGAATCTCCACAAGTGTCTTCCAGACTTCAAGATTTGAGACTGAATAATTTAA
 TTCCAGGCAACTTTTCAAGCCACCGATAATCAAGAACT

ACGCGTACGCGGCCGCTCGAG – GFP Tag – GTTTAA

Protein Sequence:

>RG217186 representing NM_033647
 Red=Cloning site Green=Tags(s)

MARSSPYLRQLQGPLLPRLDVEEDDYLNDVVEEDESVEFIDAEEELCSGGVKAGSLPGCLRVSICDENT
 QETCKVGRFPITGAWWRVQVQKPVVGSRSYQYVQGFPSYFLQSDMSPPNQKHICALFLKECEVSSDD
 VNKFLTWVKEVSNYKNLNFENLRETLRTHFKETGRKDQKQPTQNGQEELFDNEMSLPLENTIPFRNVMT
 ALQFPKIMEFLPVLLPRHFKWIIIGSGSKEMLKEIEEILGTHPWKLGFSKITYREWKLRLCEASWIAFCQC
 ESLLQLMTDLEKNALIMYSRLKQICREDGHTYVEVNDLTLTLNHSFHAASESLKFLKIDGVVTYEKSC
 VFPYDLYHAERIAFAFICDLMKKPPWHLCVDVEKVLASIHHTKPESSDDALNESKPDEVRLNENPVDDV
 TQDNGDHIWNGENEINAEISEVQLDQDQVEVPLDRDQVAALEMICSNPVTVISGKGGCKTTIVSRLFK
 HIEQLEEREVKKACEDFEQDQNASEEWITFTEQSQLEADKAIIEVLLTAPTGAAGLLRQKTGLHAYTLCCQ
 VNYSFYSWTQTMNTNKPKWFSSVRVLLVDEGSLVSVGIFKSVLNLCEHSLKSLIILGDRIQLPSIEP
 GNLLKDLFETLKSRCNAIELKTNHRAESQLIVDNATRISRQFPKFDALNISDNPTLPISIQDKTFIFV
 RLPEEDASSQSSKTNHHSCLYSVKTLLQENNLQNAKTSQFIAFRRQDCDLINDCCCKHYTGHLTKDHQS
 RLVFGIGDKICCTRNAYLSDLLPENISGSQONNDLDASSEDFSGTLPDFAKNKRDFESNVRLENGEIFFI
 TNDVTDVTFGKRRSLTINMAGLEVTVDFKLMKYCRIKHAWARTIHTFQGSSEQTVVVYVVGKAGRQHWQ
 HVYTAVTRGRRCRVYVIAEESQLRNAIMKNSFPRKTRLKHFLQSKLSSSGAPPADFPSPRKS SSGDSGGPST
 PSASPLPVVTDHMTNDVTWSEASSPDERTLTF AERWQLSSPDGVDTDLDPKSRASKRRTCGVNDDES
 PSKIFMVGESPVSSRLQNLRLNLI PRQLFKPTDNQET

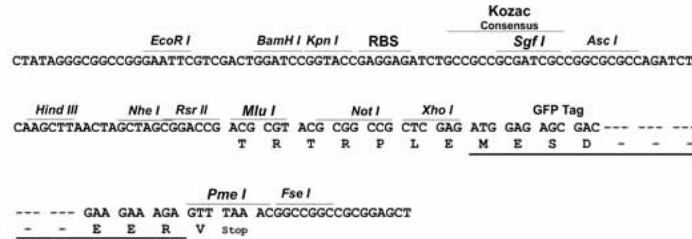
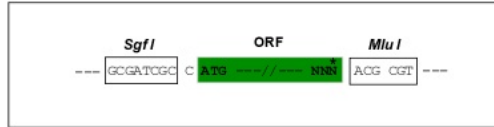
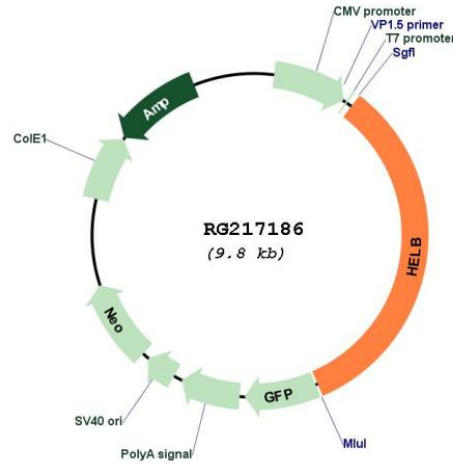
TRTRPLE – GFP Tag – V

Restriction Sites:

SgfI-MluI

Cloning Scheme:

Cloning sites used for ORF Shutting:


Plasmid Map:

ACCN: NM_033647

ORF Size: 3261 bp

OTI Disclaimer: The molecular sequence of this clone aligns with the gene accession number as a point of reference only. However, individual transcript sequences of the same gene can differ through naturally occurring variations (e.g. polymorphisms), each with its own valid existence. This clone is substantially in agreement with the reference, but a complete review of all prevailing variants is recommended prior to use. [More info](#)
OTI Annotation: This clone was engineered to express the complete ORF with an expression tag. Expression varies depending on the nature of the gene.

Components:	The ORF clone is ion-exchange column purified and shipped in a 2D barcoded Matrix tube containing 10ug of transfection-ready, dried plasmid DNA (reconstitute with 100 ul of water).
Reconstitution Method:	<ol style="list-style-type: none">1. Centrifuge at 5,000xg for 5min.2. Carefully open the tube and add 100ul of sterile water to dissolve the DNA.3. Close the tube and incubate for 10 minutes at room temperature.4. Briefly vortex the tube and then do a quick spin (less than 5000xg) to concentrate the liquid at the bottom.5. Store the suspended plasmid at -20°C. The DNA is stable for at least one year from date of shipping when stored at -20°C.
RefSeq:	NM_033647.4
RefSeq Size:	3368 bp
RefSeq ORF:	3264 bp
Locus ID:	92797
UniProt ID:	Q8NG08
Cytogenetics:	12q
Gene Summary:	This gene encodes a DNA-dependent ATPase which catalyzes the unwinding of DNA necessary for DNA replication, repair, recombination, and transcription. This gene is thought to function specifically during the S phase entry of the cell cycle. Alternative splicing results in multiple transcript variants. [provided by RefSeq, Feb 2016]