

Product datasheet for **RG217162**

MYBPC1 (NM_206820) Human Tagged ORF Clone

Product data:

Product Type:	Expression Plasmids
Product Name:	MYBPC1 (NM_206820) Human Tagged ORF Clone
Tag:	TurboGFP
Symbol:	MYBPC1
Synonyms:	LCCS4; MYBPCC; MYBPCS; MYOTREM; ssMyBP-C
Mammalian Cell Selection:	Neomycin
Vector:	pCMV6-AC-GFP (PS100010)
E. coli Selection:	Ampicillin (100 ug/mL)
ORF Nucleotide Sequence:	>RG217162 representing NM_206820 Red=Cloning site Blue=ORF Green=Tags(s)

TTTTGTAATACGACTCACTATAGGGCGGCCGGAATTCGTCGACTGGATCCGGTACCGAGGAGATCTGCC
GCC**CGATCGCC**

ATGCCAGAACCCTAAGAAAGAGGAAAATGAAGTGCCAGCCCCAGCCCCACCCCGGAAGAACCAAGTA
AAGAGAAGGAGGCCGGAACCTACACCAGCAAAAGACTGGACCCCTGTGAAACTCCTCTGGGAGGAACA
AGCCAAGCAGAAATGCCAACTCCCAGCTGCCATCTTGTTCATTGAAAACTCAAGGAGGAACAGTGAAA
GTTGGTGAAGATACACCTTCATAGCCAAAGTCAAGGCTGAAGATCTTCTGAGAAAACCCACTATCAAA
GGTTCAAAGGAAAATGGATGGACCTGGCCAGCAAAGCCGGAAGCACCTTCAGCTGAAGGAAACCTTTGA
GAGGCACAGTCGGGTGTACACATTTGAGATGCAGATCATCAAGGCCAAAGATAACTTTGCAGGAAATTAC
AGATGCGAGGTCACCTATAAGGATAAGTTTGACAGCTGTTCAATTTGATCTTGAAGTGACCAATCTACTG
GGACTACTCCTAAACATTGACATCAGATCTGCTTTCAAGAGAAGTGGAGAAGGTCAAGAGGATGCAGGAGA
ACTTGACTTTAGTGGTCTCCTGAAACGTAGGGAGGTGAAGCAGCAGGAGGAAGAACCCAGGTGGACGTA
TGGGAGTTGCTGAAGAACGCGAAACCCAGTGAGTACGAGAAGATCGCCTTCCAGTATGGAATCACCGACC
TGCGCGCATGCTCAAGCGACTCAAGCGCATGCGCAGAGAGGAGAAGAAGAGCGCAGCTTTTGCAAAAAT
TCTTGATCCTGCATATCAGTTGACAAAGGAGGAGAGTGAGGTTTGTGGAGCTGGCAGATCCAAAG
TTGGAGGTGAAATGGTATAAAAATGGTCAAGAAATTCGACCCAGTACCAAATACATCTTTGAACACAAAG
GATGCCAGAGAATCCTGTTTATCAATAACTGTCAGATGACAGATGATTCAGAGTATTATGTGACAGCCGG
TGATGAGAAATGTTCCACTGAGCTCTTCGTAAGAGAGCCTCCAATTATGGTGACCAAACAGCTGGAAGAT
ACAACCTGCTTATTGTGGGAGAGAGTGGAAATAGAATGTGAGGTGTCTGAAGATGATGCCAATGTAAAA
GGTTTAAGAAATGGTGAAGAGATTATCCCTGGTCCAAAATCAAGATACCGAATTAGAGTTGAGGGTAAAA
ACACATCTTGATCATAGAGGGAGCAACAAAGGCTGATGCTGCAGAATATTCAGTAATGACAACAGGAGGA
CAATCATCTGCTAACTTAGTGTGACTTGAAACCTCTGAAGATTTTGACACCTCTGACTGATCAGACTG
TAAATCTTGAAAAGAAATCTGCCTGAAGTGTGAAATCTCTGAAAACATACCAGGAAAATGGACTAAAA
TGGCTACCTGTTGAGGAGAGTGACCGTCTAAAGGTGGTTCACAAGGGAAGGATCCACAAGTTAGTGATA



[View online »](#)

GCCAATGCCCTCACTGAAGATGAAGGTGATTATGTATTTGCACCTGATGCCTACAATGTTACTCTGCCTG
 CCAAAGTTCATGTTATTGATCCTCCTAAGATCATCCTGGATGGTCTTGATGCTGACAACACAGTGACAGT
 GATTGCAGGAAACAAGCTTCGTCTTGAGATCCCCATCAGCGGAGAACCACCTCCTAAAGCCATGTGGAGC
 CGGGGAGATAAGGCTATTATGGAAGGCAGTGGCCGGATAAGAACAAGAATCTTACCTGATAGCAGCACTC
 TGGTCATTGATATAGCTGAAAGAGATGACTCTGGTGTACCACATCAATCTGAAAAACGAAGCTGGAGA
 GGCACATGCAAGCATCAAGGTTAAAGTTGTGGACTCCCTGATCCTCCAGTGGCACCAGCTGTGACAGAG
 GTGGGAGATGACTGGTGTATCATGAACTGGGAGCCTCCTGCCTACGACGGAGGCTCCTCAATCCTAGGAT
 ATTTTATTGAGAGGAAGAAGAAACAAGCTCCAGGTGGATGAGGCTGAATTTTGATCTCTGCAAAGAAAC
 AACTTTTGAGCCCAAGAAGATGATTGAAGGTGTGGCCTATGAGGTCCGCATCTTTGCAGTCAATGCCATT
 GGCATCTCCAAGCCAGTATGCCCTCCAGGCTTTTGTCTTTGGCTGTAAACAAGCCCTCTACTCTTC
 TGACTGTGGACTCTGCTACTGACACGACTGTCACGATGAGGTGGCGCCCCCAGACCACATTGGTGCAGC
 AGGTTTAGATGGCTATGTGCTAGAGTATTGCTTTGAAGGAAGTACATCAGCAAAACAGTCTGATGAAAAT
 GGGGAGGCTGCCTATGATCTGCCAGCTGAGGACTGGATAGTTGCAAAACAAGATCTGATTGACAAGACGA
 AGTTCACCATCACAGGTCTGCCAACAGATGCAAGATCTTTGTGCGTGTGAAGGCTGTTAATGCAGCTGG
 TGCCAGCGAGCCCAAGTACTATTCTCAGCCATTCTCGTGAAGGAAATCATAGAACCTCAAAGATTCGC
 ATTCGAAGACACCTGAAGCAAACCTATATCCGCAGAGTTGGAGAAGCTGTCAATCTGTTTATACCTTTCC
 AGGGAAAACCAAGACCAGAATTAACCTTGAAGAAGGATGGTGCAGAAATTGATAAGAATCAATAAACAT
 TCGCAACTCTGAGACTGATACAATCATATTTATTAGAAAAGCAGAGAGGACCCTCTGGGAAATATGAT
 CTGCAAGTCAAAGTGGACAAATTCGTGGAGACCGCATCAATTGACATCCAGATCATTGACCGTCCAGGTC
 CACCCCAAATTTGGAAGATTGAGGATGTCTGGGAGAAAATGTCGCTCTCACATGGACTCCACCAAAGGA
 TGATGGAATGCTGCTATCACAGGCTATACCATTGAGAAGGCTGACAAGAAGAGCATGGAATGGTTTACT
 GTCATTGAGCATTATCATCGAACCACTGCCACCATTACTGAATTGGTTCATAGGGAATGAATATTACTTCC
 GGGTCTTTTCTGAAAACATGTGTGGCCTCAGTGGGATGCCACCATGACTAAAGAGAGTGCAGTGCAGC
 CAGGGATGGTAAAATCTACAAAATCCAGTGTATGAAGACTTTGATTTCTCAGAGGCCACCATGTTTACT
 CAGCCTTTGGTTAACACCTATGCCATAGCTGGTTACAATGCCACCCTAAACTGCAGTGTGAGAGGAAATC
 CTAAGCCTAAAATAACCTGGATGAAAAACAAGTTGCTATTGTGGATGATCCAAGATACAGGATGTTTCAG
 CAACCAGGGAGTCTGTACCCTGGAAATTCGAAGCCAGCCCTATGATGGAGGCACTTACTGCTGCAAA
 GCAGTCAATGACCTGGGACAGTGGAGATTGAATGCAAACTGGAGGTGAAAGTCATTGCACAA

ACGCGTACGCGGCCGCTCGAG – GFP Tag – GTTTAA

Protein Sequence:

>RG217162 representing NM_206820
 Red=Cloning site Green=Tags(s)

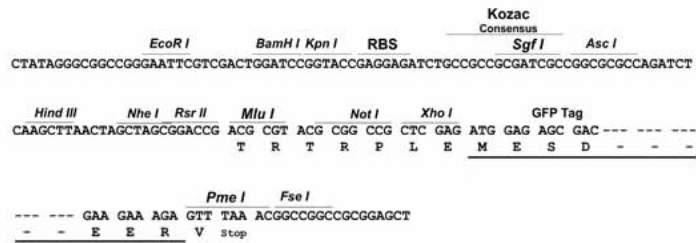
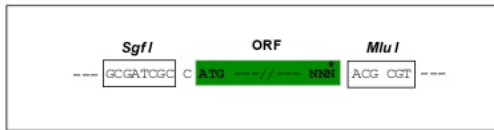
MPEPTKKEENEVPAPAPPPEEPSKEKEAGTTPAKDWTLVETPPGEEQAKQNANSQLSILFIEKPQGGTVK
 VGEDITFIKVKAE DLLRKPTIKWFKGKWM DLASKAGKHLQLKETFERHSRVYTFEMQIIKAKDNFAGNY
 RCEVTYKDKFDSCSFDLEVHSTGTTPNIDIRSAFKRSGEGQEDAGELDFSGLLKRREVKQEEEPQVDV
 WELLKNAKPSEYEKIAFYQGITDLRGLMLKRLKMRREEKKSAAF AKILDPAYQVDKGGVRV FVELADPK
 LEVKWYKNGQEIRPSTKYIFEHKGQRILFINNCQMTDDSEYYVTAGDEKSTELFVREPPIMVTKQLED
 TTAYCGERVELECEVSEDDANVKWFKNGEEIIPGPKSRYRIRVEGKHHILIEGATKADAAEYSVMTGG
 QSSAKLSVDLPLKIL TPLTDQTVNLGKEICLKEISENIPGKWTKNGLPVQESDRLKVVHKGRIHKLVI
 ANALTEDEGDYV FAPDAYNVTLPAKVHV IDPPKIILDGLDADNTVTVIAGNKLRLIEPISGEPKKAMWS
 RGDKAIMEGSGRIRTESYPDSSTLVIDIAERDDSGVYHINLKNEAGEAHASIKVKVVD FPDPPVAPTVE
 VGDDWCIMNWEPPAYDGGSPILGYFIERKKKQSSRWMLNFDLCKETT FEPKKMIEGVAYEVRI FAVNAI
 GISKPSMPSRPFVPLAVTSPPTLLTVDSVTDTTVTMRWRPPDHIGAAGLDGYVLEYCFEGSTS AKQSDEN
 GEAAAYDLPAEDWIVANKDLIDKTKFTITGLPTDAKIFVRVKAVNAAGASEPKYYSQPILVKEIIEPPKIR
 IPRHLKQTYIRRVGEAVNLVIPFQKPRPEL TWKKGAEIDKNQINIRNSETDTIIFIRKAERSHSGKYD
 LQVKVDKFVETASIDIQIIDRPGPPQIVKIEDVWGENVALTWTPPKDDGNAAITGYTIQKADKKSMEWFT
 VIEHYHRTSATITELVIGNEYFRVFSENMCGLSE DATMTKESAVIARDGKIYKNPVYEDFDFSEAMPFT
 QPLVNTYAIAGYNATLNC SVRGNPKPKITWMKNKVAIVDDPRYRMFSNQGVCTLEIRKPSPYDGGTYCCK
 AVNDLGTVEIECKLEVKVIAQ

TRTRPLE – GFP Tag – V

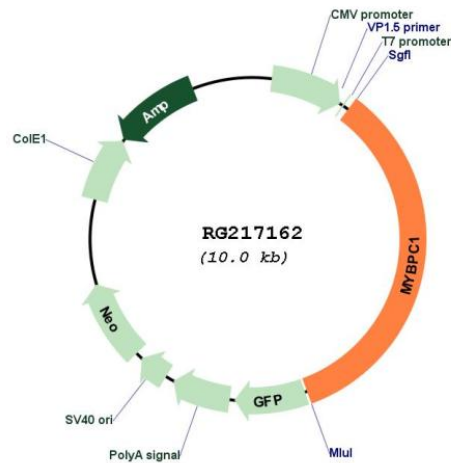
Restriction Sites: SgfI-MluI

Cloning Scheme:

Cloning sites used for ORF Shuttling:



Plasmid Map:



ACCN: NM_206820

ORF Size: 3423 bp

OTI Disclaimer: The molecular sequence of this clone aligns with the gene accession number as a point of reference only. However, individual transcript sequences of the same gene can differ through naturally occurring variations (e.g. polymorphisms), each with its own valid existence. This clone is substantially in agreement with the reference, but a complete review of all prevailing variants is recommended prior to use. [More info](#)

OTI Annotation: This clone was engineered to express the complete ORF with an expression tag. Expression varies depending on the nature of the gene.

Components: The ORF clone is ion-exchange column purified and shipped in a 2D barcoded Matrix tube containing 10ug of transfection-ready, dried plasmid DNA (reconstitute with 100 ul of water).

Reconstitution Method:

1. Centrifuge at 5,000xg for 5min.
2. Carefully open the tube and add 100ul of sterile water to dissolve the DNA.
3. Close the tube and incubate for 10 minutes at room temperature.
4. Briefly vortex the tube and then do a quick spin (less than 5000xg) to concentrate the liquid at the bottom.
5. Store the suspended plasmid at -20°C. The DNA is stable for at least one year from date of shipping when stored at -20°C.

RefSeq: [NM_206820.2](#), [NP_996556.1](#)

RefSeq Size: 3914 bp

RefSeq ORF: 3426 bp

Locus ID: 4604

UniProt ID: [Q00872](#)

Cytogenetics: 12q23.2

Gene Summary:

This gene encodes a member of the myosin-binding protein C family. Myosin-binding protein C family members are myosin-associated proteins found in the cross-bridge-bearing zone (C region) of A bands in striated muscle. The encoded protein is the slow skeletal muscle isoform of myosin-binding protein C and plays an important role in muscle contraction by recruiting muscle-type creatine kinase to myosin filaments. Mutations in this gene are associated with distal arthrogryposis type I. Alternatively spliced transcript variants encoding multiple isoforms have been observed for this gene. [provided by RefSeq, Dec 2011]