

Product datasheet for **RG217161**

Cadherin like 26 (CDH26) (NM_021810) Human Tagged ORF Clone

Product data:

Product Type:	Expression Plasmids
Product Name:	Cadherin like 26 (CDH26) (NM_021810) Human Tagged ORF Clone
Tag:	TurboGFP
Symbol:	Cadherin like 26
Synonyms:	VR20
Mammalian Cell Selection:	Neomycin
Vector:	pCMV6-AC-GFP (PS100010)
E. coli Selection:	Ampicillin (100 ug/mL)
ORF Nucleotide Sequence:	>RG217161 representing NM_021810 Red=Cloning site Blue=ORF Green=Tags(s)

TTTGTGAATACGACTCACTATAGGGCGGCCGGAATTCGTCGACTGGATCCGGTACCGAGGAGATCTGCC
 GCC**CGATCGCC**

ATGAAACCTCTGATATGGACATGGTCAGATGTTGAAGGCCAGAGGCCGGCTCTGCTCATCTGCACAGCTG
 CAGCAGGACCCACGCAGGGAGTTAAGGATCTCGAGGAAGTGCCTCCATCTGCAGCGAGTCAGTCAGCCCCA
 AGCAGCTGTGCTCTGGGGAGCTGGGGTTATGGCAAGCCCTTTGAGCCAAGAAGTGTGAAAAACATACAC
 TCTACTCTGCTTACCCAGATGCCACAATGCACAGACAACCTCTGGCTCCGGTGAAGGAAGGATGGCAG
 AGACATTGAATCAGAACTCCATGTTGCCAATGTGCTGGAAGATGACCCCGGCTACCTACCTCACGTCTA
 CAGCGAGGAAGGGGAGTGTGGAGGGGCCCATCCCTCAGCTCTCTGGCCAGCTTGAACAGGAGTTGCAA
 CCTGATTTGCTGGACTCTTTGGGTTCAAAAGCGACTCCGTTTGAGGAAATATATTCAGAGTCAGGTGTTCC
 TTCC

ACGCGTACGCGGCCGCTCGAG - GFP Tag - GTTTAA

Protein Sequence:	>RG217161 representing NM_021810 Red=Cloning site Green=Tags(s)
-------------------	--

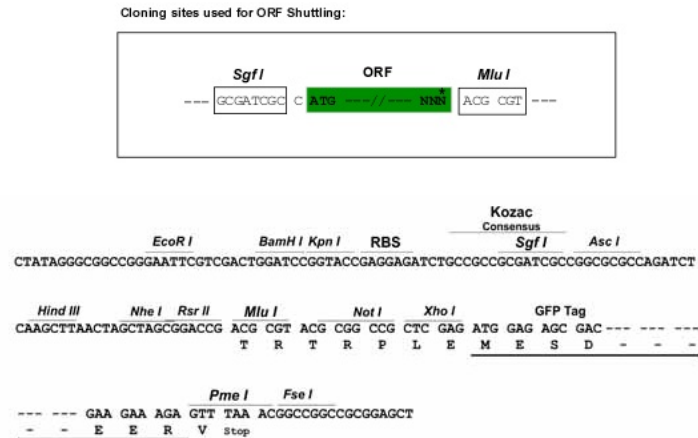
MKPLIWTSDVEGQRPALLICTAAAGPTQGVKDL EEVPPSAASQSAQARCALGSWGYGKPFEP RSVKNIH
 STPAYPDATMHRQL LAPVEGRMAETLNQKLHVANVLEDDPGYLP HYVSEEGECGGAPSLSSLASLEQLQ
 PDLLDSLGSKATPFEEIYSESGVPS

TRTRPLE - GFP Tag - V

Restriction Sites:	SgfI-MluI
--------------------	-----------


[View online »](#)

Cloning Scheme:



ACCN: NM_021810

ORF Size: 495 bp

OTI Disclaimer: The molecular sequence of this clone aligns with the gene accession number as a point of reference only. However, individual transcript sequences of the same gene can differ through naturally occurring variations (e.g. polymorphisms), each with its own valid existence. This clone is substantially in agreement with the reference, but a complete review of all prevailing variants is recommended prior to use. [More info](#)

OTI Annotation: This clone was engineered to express the complete ORF with an expression tag. Expression varies depending on the nature of the gene.

Components: The ORF clone is ion-exchange column purified and shipped in a 2D barcoded Matrix tube containing 10ug of transfection-ready, dried plasmid DNA (reconstitute with 100 ul of water).

Reconstitution Method:

1. Centrifuge at 5,000xg for 5min.
2. Carefully open the tube and add 100ul of sterile water to dissolve the DNA.
3. Close the tube and incubate for 10 minutes at room temperature.
4. Briefly vortex the tube and then do a quick spin (less than 5000xg) to concentrate the liquid at the bottom.
5. Store the suspended plasmid at -20°C. The DNA is stable for at least one year from date of shipping when stored at -20°C.

RefSeq: [NM_021810.6](#)

RefSeq Size: 1090 bp

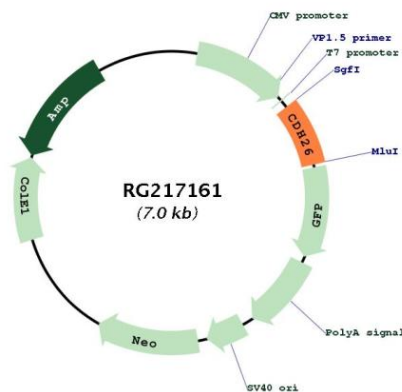
RefSeq ORF: 498 bp

Locus ID: 60437

UniProt ID: [Q8IXH8](#)

Cytogenetics:	20q13.33
Protein Families:	Transmembrane
Gene Summary:	This gene encodes a member of the cadherin protein family. Cadherins are a family of calcium-dependent adhesion molecules that mediate cell-cell adhesion in all solid tissues and modulate a wide variety of processes, including cell polarization, migration and differentiation. Cadherin domains occur as repeats in the extracellular region and are thought to contribute to the sorting of heterogeneous cell types and the maintenance of orderly structures such as epithelium. This protein is expressed in gastrointestinal epithelial cells and may be upregulated during allergic inflammation. This protein interacts with alpha integrins and may also be involved in leukocyte migration and adhesion. [provided by RefSeq, Jan 2017]

Product images:



Circular map for RG217161