

Product datasheet for **RG217151**

ELOVL7 (NM_024930) Human Tagged ORF Clone

Product data:

Product Type:	Expression Plasmids
Product Name:	ELOVL7 (NM_024930) Human Tagged ORF Clone
Tag:	TurboGFP
Symbol:	ELOVL7
Mammalian Cell Selection:	Neomycin
Vector:	pCMV6-AC-GFP (PS100010)
E. coli Selection:	Ampicillin (100 ug/mL)
ORF Nucleotide Sequence:	>RG217151 representing NM_024930 Red=Cloning site Blue=ORF Green=Tags(s)

TTTTGTAATACGACTCACTATAGGGCGGCCGGAATTCGTCGACTGGATCCGGTACCGAGGAGATCTGCC
GCC**CGATCGCC**

ATGGCCTTCAGTGATCTTACATCGAGGACTGTGCATCTTTATGATAATTGGATCAAAGATGCTGATCCAA
GAGTTGAAGATTGGCTCCTCATGTCTCGCCTCTGCCACAACCATCCTCCTAGGATTCTATGTCTATTT
TGTCACCTTCCTGGGACCAAAGCTCATGGAAAAATCGCAAGCCCTTGAAGTCAAGAAAGCAATGATAACG
TACAATTTTTTCATAGTACTCTTTCTGTGTATATGTGTTATGAGTTTGTGATGTCTGGCTGGGTATAG
GTTATTCATTTTCGATGTGACATTTGACTATTCACGGTCACCCACAGCTTTGAGGATGGCACGTACCTG
CTGGCTTTATTACTTCTCCAAATTTATTGAGCTATTAGATACGATCTTTTTTGTCTGCGCAAGAAAAAT
AGCCAAGTGACTTTCCTTCATGTATTCCATCATACCATCATGCCGTGGACCTGGTGGTTTGGAGTCAAAT
TTGCTGCAGGTGGTTTGGGAACATTCCATGCCCTTCTAAATACAGCTGTACATGTAGTCATGTATTCCTA
CTATGGACTTTCTGCATTGGGGCCAGCCTACCAGAAGTATTTGGTGGAAAAAATTTTACATCATT
CAGCTTGCCAGTTTGTATTGTCGCCATCCACATAAGCCAGTCTTTTTCATGGAGGATTGCAAGTATC
AGTTTCCAGTCTTTGCGTGCATCATTATGAGTTACAGTTTCATGTTTCTGCTGCTCTTTCTCCATTTTTG
GTACCGTGCTTACACCAAAGGTCAGAGGTTGCCAAAACGTGAAAAATGGAAGTTCAAAAACAAAGAT
AAT

ACGCGTACGCGGCCGCTCGAG - GFP Tag - GTTTAA



[View online »](#)

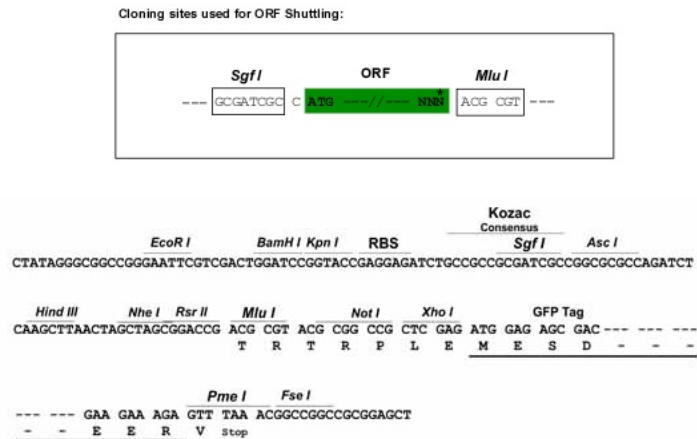
Protein Sequence: >RG217151 representing NM_024930
 Red=Cloning site Green=Tags(s)

MAFSDLTSRTVHLYDNWIKDADPRVEDWLLMSSPLPQTILLGFYVYFVTS LGPKLMENRKPFLKAMIT
 YNFFIVLFSVYMCYEFVMSGWIGYSFRCDIVDYSRSPALRMARTCWLYYFSKFIELLDTIFFVLRKKN
 SQVTFHLVHFHHTIMPWTWWFGVKFAAGGLGTFHALLNTAVHVVMSYYGLSALGPAYQKYLWKKYLTSL
 QLVQFVIVAIHISQFFMEDCKYQFPVACIIMSYFSMFLLLFLHFWRAYTKGQRLPKTVKNGTCKNKD
 N

TRTRPLE - GFP Tag - V

Restriction Sites: SgfI-MluI

Cloning Scheme:



ACCN: NM_024930

ORF Size: 843 bp

OTI Disclaimer: The molecular sequence of this clone aligns with the gene accession number as a point of reference only. However, individual transcript sequences of the same gene can differ through naturally occurring variations (e.g. polymorphisms), each with its own valid existence. This clone is substantially in agreement with the reference, but a complete review of all prevailing variants is recommended prior to use. [More info](#)

OTI Annotation: This clone was engineered to express the complete ORF with an expression tag. Expression varies depending on the nature of the gene.

Components: The ORF clone is ion-exchange column purified and shipped in a 2D barcoded Matrix tube containing 10ug of transfection-ready, dried plasmid DNA (reconstitute with 100 ul of water).

Reconstitution Method:

1. Centrifuge at 5,000xg for 5min.
2. Carefully open the tube and add 100ul of sterile water to dissolve the DNA.
3. Close the tube and incubate for 10 minutes at room temperature.
4. Briefly vortex the tube and then do a quick spin (less than 5000xg) to concentrate the liquid at the bottom.
5. Store the suspended plasmid at -20°C. The DNA is stable for at least one year from date of shipping when stored at -20°C.

RefSeq: [NM_024930.3](#)

RefSeq Size: 3815 bp

RefSeq ORF: 846 bp

Locus ID: 79993

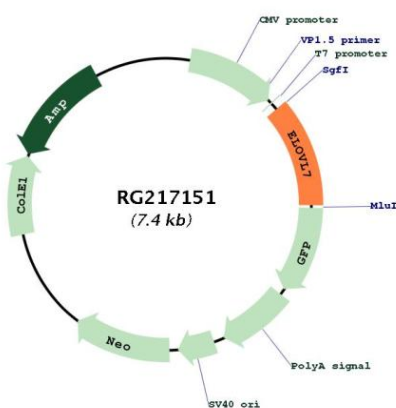
UniProt ID: [A1L3X0](#)

Cytogenetics: 5q12.1

Protein Families: Transmembrane

Gene Summary: Catalyzes the first and rate-limiting reaction of the four reactions that constitute the long-chain fatty acids elongation cycle. This endoplasmic reticulum-bound enzymatic process allows the addition of 2 carbons to the chain of long- and very long-chain fatty acids (VLCFAs) per cycle. Condensing enzyme with higher activity toward C18 acyl-CoAs, especially C18:3(n-3) acyl-CoAs and C18:3(n-6)-CoAs. Also active toward C20:4-, C18:0-, C18:1-, C18:2- and C16:0-CoAs, and weakly toward C20:0-CoA. Little or no activity toward C22:0-, C24:0-, or C26:0-CoAs. May participate in the production of saturated and polyunsaturated VLCFAs of different chain lengths that are involved in multiple biological processes as precursors of membrane lipids and lipid mediators.[UniProtKB/Swiss-Prot Function]

Product images:



Circular map for RG217151