

Product datasheet for **RG217146**

FRMPD2 (NM_001042512) Human Tagged ORF Clone

Product data:

Product Type:	Expression Plasmids
Product Name:	FRMPD2 (NM_001042512) Human Tagged ORF Clone
Tag:	TurboGFP
Symbol:	FRMPD2
Synonyms:	PDZD5C; PDZK4; PDZK5C
Mammalian Cell Selection:	Neomycin
Vector:	pCMV6-AC-GFP (PS100010)
E. coli Selection:	Ampicillin (100 ug/mL)
ORF Nucleotide Sequence:	>RG217146 representing NM_001042512 Red=Cloning site Blue=ORF Green=Tags(s)

TTTTGTAATACGACTCACTATAGGGCGGCCGGAATTCGTCGACTGGATCCGGTACCGAGGAGATCTGCC
GCC**CGATCGCC**

ATGACATCTATCCCTTTCCAGGTGACCGACTCCTGCAGGTGGATGGAGTGATTCTGTGCGGCCTCACCC
ACAAGCAGGCTGTGCAGTGCCTGACGGTCTGGGCAGTTGCAAGACTGGTCTTAGAGAGAAGAGTCCC
CAGGAGTACACAGCAGTGCCTTCTGCTAATGACAGCATGGGAGATGAACGCACGGCTGTTTCTTGTA
ACAGCCTTGCCTGGCAGGCTTCGAGCTGTGTCTCAGTGACAGATGGTCCTAAGTTTGAAGTCAAATA
AAAAGAATGCCAATGGTTTGGGATTCAGTTTCGTGCAGATGGAGAAAGAGAGCTGCAGCCATCTCAAAG
TGATCTTGTGAGGATTAAGAGGCTCTTCCGGGGCAGCCAGCTGAGGAGAATGGGGCCATTGCAGCTGGT
GACATTATCCTGGCCGTGAATGGAAGTCCACGGAAGGCCTCATCTTCCAGGAGGTGCTGCATTTACTGA
GAGGGGCCACAGGAAGTCAAGCTCCTCTTTCGCGACCCCTCCAGGTGCGCTGCCTGAGCTGGAGCA
GGAATGGCAGACCTGAACTCTCAGCTGACAAAGAATTCACCAGGGCAACATGTACTGACTCATGTACC
AGCCCCATCCTGGATCAAGAGGACAGCTGGAGGGCAGTGCTCCCCAGATGCAGGGGAAGGCTGGGTC
TCAGGCCAGAGTCTCCAAAAGGCCATCAGAGAGGCACAATGGGGCCAAAACAGAGAGAGACCTTGGGC
CAGTTCCTTGACACATTCTCTGAGTCCCACCTCATTTATGCAAACCTCACCAAGAAAGGGATGAATCA
ACATTGGCGACCTCTTTGAAAAGGATGTGAGGCAAAACTGCTATTCAGTTTGTGATATCATGAGACTTG
GAAGATATTCCTCTCATCTCCTAACCAGACTTTCGACAGATATTTTC

ACGCGTACGCGGCCGCTCGAG - GFP Tag - GTTTAA



[View online »](#)

Protein Sequence: >RG217146 representing NM_001042512
Red=Cloning site Green=Tags(s)

MTSIPFPGDRLQLQDGVILCGLTHKQAVQCLTGPQVARLVLERVPRSTQQCPSSANDSMGDERTAVSLV
 TALPGRPSSCVSVDGPKFEVKLKKNANGLGFSFVQMEKESCSHLKSDLVRIKRLFPQPAPAEENGAIAG
 DIILAVNGRSTGLIFQEVHLHLRGAPQEVTLLLCRPPPGALPELEQEWQTPELSADKEFTRATCTDSCT
 SPILDQEDSWRDSASPDAEGGLRPESSQKAIREAQWQNRERPWASSLTHSPESHPLCKLHQERDES
 TLATSLEKDVQRQNCYSVCDIMRLGRYSFSSPLTRLSTDIF

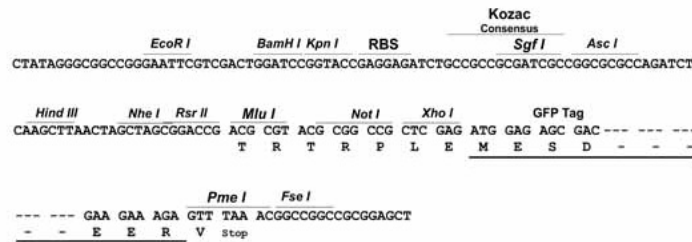
TRTRPLE - GFP Tag - V

Restriction Sites:

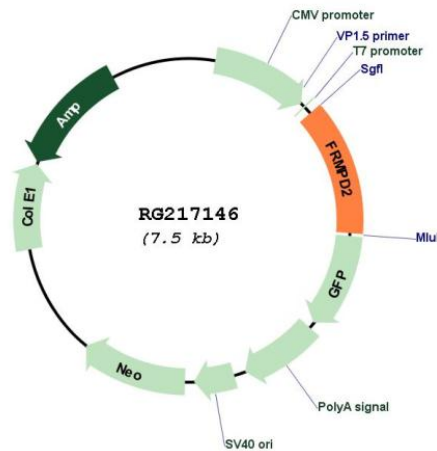
Sgfl-MluI

Cloning Scheme:

Cloning sites used for ORF Shuttling:



Plasmid Map:



ACCN: NM_001042512

ORF Size: 960 bp

OTI Disclaimer:	The molecular sequence of this clone aligns with the gene accession number as a point of reference only. However, individual transcript sequences of the same gene can differ through naturally occurring variations (e.g. polymorphisms), each with its own valid existence. This clone is substantially in agreement with the reference, but a complete review of all prevailing variants is recommended prior to use. More info
OTI Annotation:	This clone was engineered to express the complete ORF with an expression tag. Expression varies depending on the nature of the gene.
Components:	The ORF clone is ion-exchange column purified and shipped in a 2D barcoded Matrix tube containing 10ug of transfection-ready, dried plasmid DNA (reconstitute with 100 ul of water).
Reconstitution Method:	<ol style="list-style-type: none">1. Centrifuge at 5,000xg for 5min.2. Carefully open the tube and add 100ul of sterile water to dissolve the DNA.3. Close the tube and incubate for 10 minutes at room temperature.4. Briefly vortex the tube and then do a quick spin (less than 5000xg) to concentrate the liquid at the bottom.5. Store the suspended plasmid at -20°C. The DNA is stable for at least one year from date of shipping when stored at -20°C.
RefSeq:	NM_001042512.1 , NP_001035977.1
RefSeq Size:	1870 bp
RefSeq ORF:	963 bp
Locus ID:	143162
UniProt ID:	Q68DX3
Cytogenetics:	10q11.22
Gene Summary:	This gene encodes a peripheral membrane protein and is located in a region of chromosome 10q that contains a segmental duplication. This copy of the gene is full-length and is in the telomeric duplicated region. Two other more centromerically proximal copies of the gene are partial and may represent pseudogenes. This full-length gene appears to function in the establishment and maintenance of cell polarization. The protein is recruited to cell-cell junctions in an E-cadherin-dependent manner, and is selectively localized at the basolateral membrane in polarized epithelial cells. Alternative splicing results in multiple transcript variants. [provided by RefSeq, Dec 2009]