

## Product datasheet for **RG217127**

### **PDE9A (NM\_001001578) Human Tagged ORF Clone**

#### **Product data:**

Product Type:	Expression Plasmids
Product Name:	PDE9A (NM_001001578) Human Tagged ORF Clone
Tag:	TurboGFP
Symbol:	PDE9A
Synonyms:	HSPDE9A2
Mammalian Cell Selection:	Neomycin
Vector:	pCMV6-AC-GFP (PS100010)
E. coli Selection:	Ampicillin (100 ug/mL)



[View online »](#)

**ORF Nucleotide Sequence:**

>RG217127 representing NM\_001001578  
 Red=Cloning site Blue=ORF Green=Tags(s)

TTTTGTAATACGACTCACTATAGGGCGGCCGGAATTCGTGACTGGATCCGGTACCGAGGAGATCTGCC  
 GCC**CGGATCGCC**

ATGGGATCCGGCTCCTCCAGCTACCGGCCAAGGCCATCTACCTGGACATCGATGGACGCATTCAAGAGG  
 AACACGACCATCTCCCTGCTGACCACCGACGACGCCATGGTCTCCATCGACCCCACCATGCCCGCAATT  
 CAGAACGCACTCCGTACAAAGTGAGACCTGTGGCCATCAAGCAACTCTCCGAGCATTCAAAATCAATGAA  
 CTGAAAGCTGAAGTTGCAAACTACTTGGCTGTCTAGAGAAAACGCGTGAATTGGAAGGACTAAAAGTGG  
 TGGAGATTGAGAAATGCAAGAGTGACATTAAGAAGATGAGGGAGGAGCTGGCGGCCAGAAGCAGCAGGAC  
 CAACTGCCCTGTAAGTACAGTTTTTTGGATAACCAAGAAGTTGACTCCTCGACGCGATGTTCCCACT  
 TACCCCAAGTACCTGCTCTCTCCAGAGACCATCGAGGCCCTGCGGAAGCCGACCTTTGACGTCTGGCTTT  
 GGGAGCCCAATGAGATGCTGAGCTGCCTGGAGCACATGTACCACGACCTCGGGCTGGTCAGGACTTCAG  
 CATCAACCCTGTACCCTCAGGAGTGGCTGTTCTGCGTCCACGACAACACAGAACAACCCCTTCCAC  
 AACTTCCGGCACTGCTTCTGCGTGGCCAGATGATGTACAGCATGGTCTGGCTCTGCAGTCTCCAGGAGA  
 AGTTCTCACAAACGGATATCCTGATCCTAATGACAGCGGCCATCTGCCACGATCTGGACCATCCCGGCTA  
 CAACAACACGTACCAGATCAATGCCCGCACAGAGCTGGCGGTCCGCTACAATGACATCTCACCGCTGGAG  
 AACCACCACTGCGCCGTGGCCTTCCAGATCCTCGCCGAGCCTGAGTGCAACATCTTCTCCAACATCCAC  
 CTGATGGGTTCAAGCAGATCCGACAGGGAATGATCACATTAATCTTGGCCACTGACATGGCAAGACATGC  
 AGAAATATGGATTCTTTCAAAGAGAAAATGGAGAATTTTACTACAGCAACGAGGAGCACATGACCCTG  
 CTGAAGATGATTTTATAAGAAATGCTGTGATATCTTAACGAGGTCGTCCTCAATGGAAGTCCGAGGCCTT  
 GGTGGACTGTTTATTAGAGGAATATTTTATGCAGAGCGACCGTGAAGAAGTGAAGAAGTCCCTGTGGC  
 ACCGTTTATGGACCGAGACAAAGTGACCAAGGCCACAGCCAGATTGGGTTTCATCAAGTTTGTCTGATC  
 CCAATGTTTGAACAGTGACCAAGCTCTTCCCATGGTTGAGGAGATCATGCTGCAGCCACTTTGGGAAT  
 CCCGAGATCGCTACGAGGAGCTGAAGCGGATAGATGACGCCATGAAAGAGTTACAGAAGAAGACTGACAG  
 CTTGACGTCTGGGGCCACCGAGAAGTCCAGAGAGAGAAGCAGAGATGTGAAAACAGTGAAGGAGACTGT  
 GCC

**ACGGGCCGCTCGAG - GFP Tag - GTTTAA**

**Protein Sequence:**

>RG217127 representing NM\_001001578  
 Red=Cloning site Green=Tags(s)

MGS GSSSYRPKAIYLDIDGRIQKEHDHLPADHRRRHGLHRPHHAREFRTHSVQSETCGHQATLRAFKINE  
 LKAEVANHLAVLEKRVELEGLKVVEIEKCKSDIKMREELAARSSRTNCPCKYSFLDNHKKLTPRRDVPT  
 YPKYLLSPETIEALRKPTFDVWLWEPNEMLSCLEHMYHDLGLVRDFSINPVTLRRWLFVHDNYRNNPFH  
 NFRHCFVAQMMYSMVWLCSLQEKFSQTDILILMTAAICHDLDPGYNNNTYQINARTELAVRYNDISPLE  
 NHHCAVAFQILAEPECNIFSNIPPDGFKQIRQGMITLILATDMARHAEIMDSFKEKMFNFYSNEEHMTL  
 LKMILIKCCDISNEVRPMEVAEPWVDCLLEEFMQSDREKSEGLPVAPFMDRDVKTKATAQIGFIKFLVI  
 PMFETVTKLFPVVEIIMLQPLWESRDREELKRIDDAMKELQKKTDSL TSGATEKSRERSRDVKNSEGDC  
 A

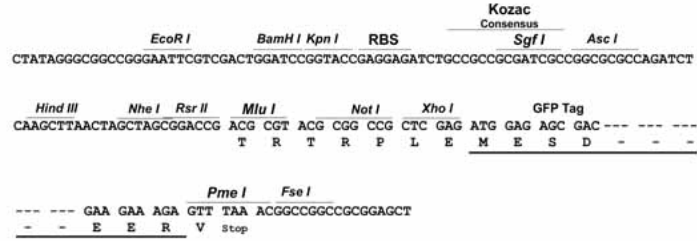
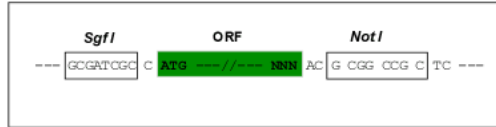
**TRPLE - GFP Tag - V**

**Restriction Sites:**

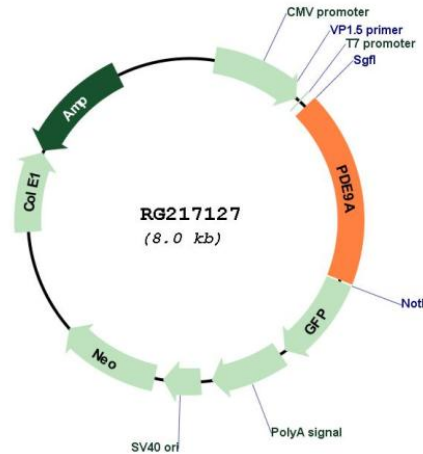
Sgfl-NotI

Cloning Scheme:

Cloning sites used for ORF Shuttling:



Plasmid Map:



ACCN: NM\_001001578

ORF Size: 1473 bp

OTI Disclaimer: The molecular sequence of this clone aligns with the gene accession number as a point of reference only. However, individual transcript sequences of the same gene can differ through naturally occurring variations (e.g. polymorphisms), each with its own valid existence. This clone is substantially in agreement with the reference, but a complete review of all prevailing variants is recommended prior to use. [More info](#)

OTI Annotation: This clone was engineered to express the complete ORF with an expression tag. Expression varies depending on the nature of the gene.

Components: The ORF clone is ion-exchange column purified and shipped in a 2D barcoded Matrix tube containing 10ug of transfection-ready, dried plasmid DNA (reconstitute with 100 ul of water).

**Reconstitution Method:**

1. Centrifuge at 5,000xg for 5min.
2. Carefully open the tube and add 100ul of sterile water to dissolve the DNA.
3. Close the tube and incubate for 10 minutes at room temperature.
4. Briefly vortex the tube and then do a quick spin (less than 5000xg) to concentrate the liquid at the bottom.
5. Store the suspended plasmid at -20°C. The DNA is stable for at least one year from date of shipping when stored at -20°C.

**RefSeq:** [NM\\_001001578.1](#), [NP\\_001001578.1](#)

**RefSeq Size:** 1797 bp

**RefSeq ORF:** 1476 bp

**Locus ID:** 5152

**UniProt ID:** [O76083](#)

**Cytogenetics:** 21q22.3

**Protein Families:** Druggable Genome

**Protein Pathways:** Progesterone-mediated oocyte maturation, Purine metabolism

**Gene Summary:** The protein encoded by this gene catalyzes the hydrolysis of cAMP and cGMP to their corresponding monophosphates. The encoded protein plays a role in signal transduction by regulating the intracellular concentration of these cyclic nucleotides. Multiple transcript variants encoding several different isoforms have been found for this gene. [provided by RefSeq, Jul 2008]