

Product datasheet for **RG217081**

CDC2L5 (CDK13) (NM_003718) Human Tagged ORF Clone

Product data:

Product Type:	Expression Plasmids
Product Name:	CDC2L5 (CDK13) (NM_003718) Human Tagged ORF Clone
Tag:	TurboGFP
Symbol:	CDK13
Synonyms:	CDC2L; CDC2L5; CHDFIDD; CHED; hCDK13
Mammalian Cell Selection:	Neomycin
Vector:	pCMV6-AC-GFP (PS100010)
E. coli Selection:	Ampicillin (100 ug/mL)
ORF Nucleotide Sequence:	>RG217081 representing NM_003718 Red=Cloning site Blue=ORF Green=Tags(s)

TTTTGTAATACGACTCACTATAGGGCGGCCGGAATTCGTCGACTGGATCCGGTACCGAGGAGATCTGCC
GCC**CGATCGCC**

ATGCCGAGCAGCTCGGACACGGCGCTGGGGGGAGGCGGGGCCTGAGCTGGGCGGAGAAGAAGTTGGAGG
AACGCCGCAAGCGGAGGCGATTCTGTCCCTCGGCAGCCGCGCTGCTGTTGCCCTCTGCAGCCGCA
GCTCCTGCAACCGCCGCCGCCCGCCCTCTGCTCTTCTGGTGTCTCCGGCACGGCCGCCGCCGCA
GCCGCCGCCGCCCGGCCTCTCTCTTGTCTTCCAGCCGGGCCCTCTGGGGTCAAGCGCTGGCGA
GAGGCAGGGGGCGCGCAGGAGGGCGGCGAAGCGCGTCCGGGCCCGCCGGCAGGAGCGGAGAA
GGTTCGGGTCTTCTCGTGCCTCAGCCAGCGCAGGACGGCGGTGGCGGTGCTAGTAGCGCGGGGTGTG
ACCCCGCTGGTGAATACGAGGATGTGAGCTCCAGTCCGAGCAGGGGTGCTGTGGGGGGGCCAGCG
CGGCAACGGCGCGCAGCGCTGCCGGGGAACGGGGGCGAGCGCGGGAGTCCGGCCTCTCTCCGGCAC
CCAGCGGCGCGGGGAGGGTCCGAGCGCAGGCCCGCCGGGACCGCCGAGCAGCAGTGGCCGAGCAAG
GAGCGCCACCGGAGCACCGGCGCGGGATGGGACGCGCGTGGCAGCGAGGCTCCAAGTCCCGCAGCC
GCCACAGCCACAGCGGCGAGGAACGGGCCGAGGTCCGCAAGAGCGGCAGCAGCAGCAGCAGCGCGGCCG
CCGGAAAAGCGCTTCGGCCACATCCAGCAGCAGTAGCAGCCGCAAGGACCGGGACTCGAAGGCCACCGC
AGCCGACTAAGTCTCAAGGAGCCGCTTCGGCTACAAGAAACCGCCCAAGGCTACCGGAGGACA
AGACCGACCTAAGGCTACAGCGGCGCGGTCCCTCAGCCACTGGGAGGCCGGGACGACAGCCCGGT
GTCCACAGGGCCTCTCAGACCTGAGGAGCGCAAGTCCCCAGCCCGCAGGAGGTGGCAGCAGCCCC
TATTCTCGGCGGTGCCGCTCCCGAGCCCTACAGTCGCGCGCTCCCCAGCTACAGCCGCCACA
GCTCCTACGAGCGGGGCGGACGTGTCCCTAGTCCCTACAGCAGCAGCAGTGGCGCGCTCTCGCAG
TCCCTACAGCCCTGTGCTCAGACGGTCTGGAAAATCCCGAAGCAGAAGCCGATTCATCTAGGCATTCA
AGATCTCGTAGCAGGCACAGATTGTCTAGATCCAGAAGTCGTCATTCTAGTATTTCTCTAGCACACTAA
CTCTGAAGAGTAGCCTGGCAGCTGAATTGAACAAGAATAAAAAAGCACGAGCAGCAGAGGCGCAAGAGC
CGCAGAAGCAGCAAAGCTGCAGAAGCAACTAAGGCTGCTGAGGCTGCTGCCAAGGCTGCAAAGCTTCA



AACACTTCTACACCTACCAAGGGGAACGCGGAAACTAGTGCCAGTGCATCACAACAAACCATGTGAAGG
ATGTGAAGAAAATTTAAATTTGAACATGCACCTTCCCTCAAGTGGTGGAACTTTAAAAATGACAAAGC
AAAAACAAAGCCACCTTTCAGGTAACGAAGGTGGAAAAATATTTGATTGTAGATAAAGCCACCAAGAAA
GCAGTCATAGTTGGAAAGGAGAGTAAATCTGCTGCTACAAAGGAGGAATCAGTATCTCTTAAAGAGAAAA
CCAAACCCTTACACCAAGCATAGGAGCCAAGGAGAAGGAGCAACATGTAGCTTTAGTCACCTCTACATT
ACCACCGTTACCTTTGCCTCCCATGCTGCCTGAAGATAAAGAAGCTGATAGCTTACGAGGAAATATTTCA
GTAAAAGCAGTTAAAAAGAAGTAGAAAAGAACTCCGATGTCTTCTTGCCTGATTTACCGCTGCCCTCG
AGCTACCAGGAGGAGATGATCTTTCAAAGAGTCCAGAGGAAAAGAAAACAGCAACACAGTTACATAGTAA
AAGGAGGCCTAAAATATGTGGGCCTCGCTATGGTGAAACCAAAGAAAAAGATATTGACTGGGAAAAACGC
TGCGTGGATAAATTTGATATCATCGGAATTATTGGAGAAGGTACTIONTACGGACAAGTTTACAAAGCCAGGG
ATAAAGACACTGGAGAAATGGTAGCCTTAAAAAAGTACGTCTGGATAATGAAAAGGAAGGCTTTCCAAT
TACAGCAATTCGAGAAATTTAAATTTCTCCGGCAGCTTACCCATCAGAGTATTATCAATATGAAGGAAATA
GTGACTGATAAAGAAGATGCTTTGGATTCAAGAAGGACAAGGTGCATTTTATCTGGTGTTTGAATATA
TGGACCATGATCTGATGGGACTACTGGAATCAGGCTTGGTTCATTTTAAAGAAAATCACATAAAGTCATT
TATGAGACAGCTCATGGAGGCTGAGTATTGTGCATAAGAAGAACTTTTGCATAGAGATTTAAATGT
TCCAATATCCTTCTAAATAATAGAGGGCAGATAAACTTGCAGACTTTGGACTTGCCTGATTGTATAGCT
CAGAAGAAAGTCGGCCGTATACTAACAAGTAATTACTIONTATGGTACCGTCCACCTGAACTGCTACTGGG
AGAAGAACGATACACACCAGCCATTGATGTATGGAGCTGTGGCTGTATCCTTGGCGAACTTTCACTAAA
AAACCTATATTTCAAGCAATCAGGAACCTGCACAACCTAGAATTAATAAGCCGAATATGTGGGAGTCCAT
GTCCTGCAGTGTGGCCTGATGTAATCAAACCTACCATATTTCAACACCATGAAACCAAAGAAGCAATATCG
TCGAAAGTTAAGAGAAGAATTTGTTTTATTCTGCAGCTGCGCTAGACTTATTTGATTACATGCTTGCC
TTGGATCCTAGTAAGCGCTGCACCTGCTGAACAGGCTCTCAGTGCAGTTCCTCCGAGATGTGGAACCT
CAAAAATGCCTCCACCAGATCCCTTTATGGCAAGATTGCATGAGTTATGGAGTAAAAACGGAAGAAG
ACAGAAGCAGATGGGCATGACTGATGATGTTTCCACAATTAAGGCCCCAGGAAGGACTTGTCTCTGGGC
TTGGATGACAGCAGAACCAACACACCCAGGGTGTGCTGCCATCTTACAGCTGAAATCTCAGGGCAGCT
CAAATGTGGCACCTGTA AAAACAGGCCCTGGACAGCACTTAAACCACAGTGAATTGGCAATTCTACTAAA
CCTACTACAATCTAAAACAAGTGTAAATATGGCTGATTTTGTCCAAGTGTGAACATTAAGGTAACTCT
GAGACTCAACAGCAGCTAAATAAAATAAACCTTCTGCTGGAATTTTGGCAACAGGTGAAAAACAGACAG
ATCCATCAACACCACAACAGGAGTCTTCGAAACCGTTGGGAGGAATTCAGCCTTCTTCTCAGACCATCCA
GCCTAAAGTGGAGACTGATGCTGCCAGGCGGCTGTGCAGAGTGCATTTGCAGTCTCTGTTGACTCAGTTA
ATAAAGGCTCAGCAGTCAAAGCAGAAAGATGTGCTACTAGAAGAGAGGGAAAATGGATCGGGACATGAAG
CGTCATTACAACCTCAGGCCACCTCCAGAACCTAGCACTCCGGTGTGCGGACAAGATGACCTCATCCAGCA
TCAAGATATGAGGATCTTGGAGCTAACGCCAGAACCAGACCGGCCTCGAATTCTGCCTCCTGACCACGA
CCTCCCGAGCCTCCTGAACCACCACCAGTCACTGAGGAAGATCTAGATTATCGGACAGAAAACAGCATG
TACCCACCACCAGTTCTTCAATTAAGTACCCTCATGCCGGAGTGAAGGCAGCCCTGTTACAGCTGCTTGC
TCAGCATCAGCCCAGGATGACCCAAAAGAGAAGGTGGGATTGATTATCAAGCAGGAGACACTTACGTG
TCCACTCAGACTACAAGGACAACCTTTGGATCCTCTTCTTCTTCTGCTCCTTATGTTAGCAATGATG
GTCTAGGAAGCAGTTCTGCTCCACCCTAGAACGACGTAGTTTCAATGGAAATTCAGATATTCAGTCTTT
GGATAACTACAGTACTGCTTCATCTCATTCTGGTGGTCCACCTCAGCCTTCTGCCTTTCTGAGTCATT
CCCAGTTCAGTAGCTGGATATGGAGACATTTACCTCAATGCTGGTCCCATGTTGTTTATGGAGACAAGG
ACCATAGATTTGAATATAGCCATGGTCCTATTGAGTCTTGGCAAACAGCAGTGAACCTTCCACGGGGCC
AGAGAGTACTCATCCTTTGCCAGCAAAGATGCACAACATAAATAAGTGGTAACTTACAGGAAAATCCG
AGTGGCCCCAGCCTCATGCATGGACAGACCTGGACTTCTCCTGCCAAGGACCTGGATATTCACAAGGAT
ACAGGGGACATATTAGCACATCAACTGGCAGAGGCAGAGGCAGAGGGTTACCATA

ACGCGTACGCGGCCGCTCGAG – GFP Tag – GTTTAA

Protein Sequence: >RG217081 representing NM_003718
 Red=Cloning site Green=Tags(s)

```

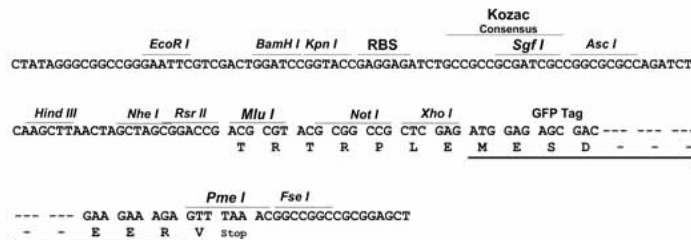
MPSSSDTALGGGGGLSWAEKKLEERRKRRRFLSPRQPPLLLPLLQPQLLQPPPPPPPLFLAAPGTAAAA
AAAAAASSSCFSPGPPLGVKRLARGRGRAGRRKRRRGRPRAGQAEKRRVFSLPQPQQDGGGGASSGGGV
TPLVEYEDVSSQSEQLLGGASAATAAAGGTGGSGGSPASSSGTQRRGEGSERRRRDRSSSSGRSK
ERHREHRRRDGQGGSEASKSRSRSHSHSGEERA EVAKSGSSSSSGRRKSASATSSSSSRKDRDSCAHR
SRTKSSKEPPSAYKEPPKAYREDKTEPKAYRRRRSL SPLGGRDDSPVSHRASQSLRSRKSPPAGGGSSP
YSRRLPRSPSPYSRHRSPYSRHSYERGGDVSPSPYSSSSWRRSRSPYSPVLRSSGKSRSRSPYSRHS
RSRHRHLRSRHRSSISPSTLTLKSSLAELNKNKARAAEAARAAEAAKAAEATKAAEAAKAAKAS
NTSTPTKNAETSASASQTNHVKDVKKIKIEHAPSPSSGTLKNDKAKTKPPLQVTKVENNLIVDKATK
AVIVGKESKAATKEESVSLKEKTKPLTPSIGAKEKEQHVALVTSTLPLPLPMLPEDKEADSLRGNIS
VKAVKKEVEKKLRCLLADLPLPELPGGDDLKSPEEKKTATQLHSKRRPKICGPRYGETKEKDIDWGR
CVDKFDIIGIIGEGTYGQVYKARDKDTGEMVALKKVRLDNEKEGFPITAIKILRQLTHQSIINMKEI
VTDKEDALDFKKDKGAFYLVFEYMDHDL MGLLESGLVHFNENHIKSFMRQLMEGLDYCHKKNFLHRDIK
SNILLNNGQIKLADFLARLYSSESRPYTNKVIITLWYRPELLLGEERYTPAIDVWSCGICLGEFLT
KPIFQANQELAQLELISRICGSPCPAVWPDVIKLPYFNTMKPKQYRKLREEFVFIIPAAALDFDYMLA
LDPSKRCTAEQALQCEFLRDVEPSKMPPDLPLWQDCHELWSKRRRQKQMGMTDDVSTIKAPRKDSLGL
LDDSRNTNPQGVLPSSQLKSGSSNVPVKTGPGQHLNHELA ILLNLLQSKT SVNMADFVQVLNIKVNS
ETQQQLNKINLPAGILATGEKQTDPTPQQESSKPLGGIQPSSQTIQPKVETDAAQAAVQSAFVLLTQL
IKAQQSKQKDVLLLEERENSGHEASLQLRPPPEPSTPVSGQDDL IQHQDMRILEL TPEPDRPRILPPDQR
PPEPEPPPVTEDLDYRTENQHVP TSSSL TDPHAGVKAALLQLLAQHQPQDDPKREGGIDYQAGDTYV
STSDYKDNFGSSSFSSAPYVNDGLGSSSAPLERRSFIGNSDIQSLDNYSTASSHSGGPPQPSAFSESF
PSSVAGYGD IYLNAGPMLFSGDKDRHFEYSHGPIAVLANSSDPSTGPESTHPLPAKMHNYYGGNLQENP
SGPSLMHGQWTWSPAQGGYSQGYRGHISTSTGRGRGLPY
    
```

TRTRPLE - GFP Tag - V

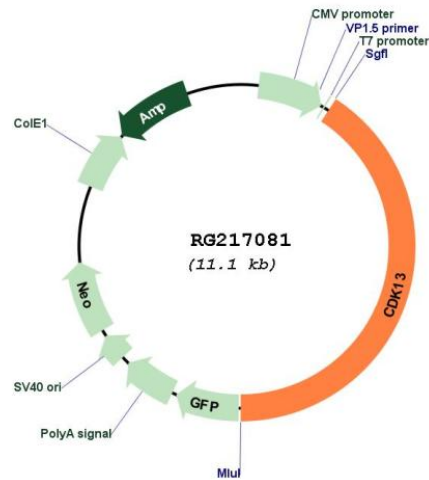
Restriction Sites: SgfI-MluI

Cloning Scheme:

Cloning sites used for ORF Shutting:



Plasmid Map:



ACCN: NM_003718

ORF Size: 4536 bp

OTI Disclaimer: The molecular sequence of this clone aligns with the gene accession number as a point of reference only. However, individual transcript sequences of the same gene can differ through naturally occurring variations (e.g. polymorphisms), each with its own valid existence. This clone is substantially in agreement with the reference, but a complete review of all prevailing variants is recommended prior to use. [More info](#)

OTI Annotation: This clone was engineered to express the complete ORF with an expression tag. Expression varies depending on the nature of the gene.

Components: The ORF clone is ion-exchange column purified and shipped in a 2D barcoded Matrix tube containing 10ug of transfection-ready, dried plasmid DNA (reconstitute with 100 ul of water).

Reconstitution Method:	<ol style="list-style-type: none">1. Centrifuge at 5,000xg for 5min.2. Carefully open the tube and add 100ul of sterile water to dissolve the DNA.3. Close the tube and incubate for 10 minutes at room temperature.4. Briefly vortex the tube and then do a quick spin (less than 5000xg) to concentrate the liquid at the bottom.5. Store the suspended plasmid at -20°C. The DNA is stable for at least one year from date of shipping when stored at -20°C.
RefSeq:	NM_003718.2 , NP_003709.2
RefSeq Size:	5246 bp
RefSeq ORF:	4539 bp
Locus ID:	8621
UniProt ID:	Q14004
Cytogenetics:	7p14.1
Protein Families:	Druggable Genome, Protein Kinase
Gene Summary:	The protein encoded by this gene is a member of the cyclin-dependent serine/threonine protein kinase family. Members of this family are well known for their essential roles as master switches in cell cycle control. The exact function of this protein has not yet been determined, but it may play a role in mRNA processing and may be involved in regulation of hematopoiesis. Alternatively spliced transcript variants have been described.[provided by RefSeq, Dec 2009]