

Product datasheet for **RG217061**

TBC1D9B (NM_015043) Human Tagged ORF Clone

Product data:

Product Type: Expression Plasmids
Product Name: TBC1D9B (NM_015043) Human Tagged ORF Clone
Tag: TurboGFP
Symbol: TBC1D9B
Synonyms: GRAMD9B
Mammalian Cell Selection: Neomycin
Vector: pCMV6-AC-GFP (PS100010)
E. coli Selection: Ampicillin (100 ug/mL)
ORF Nucleotide Sequence: >RG217061 representing NM_015043
Red=Cloning site Blue=ORF Green=Tags(s)

TTTTGTAATACGACTCACTATAGGGCGGCCGGAATTCGTCGACTGGATCCGGTACCGAGGAGATCTGCC
GCCCGCATCGCC

ATGTGGCTGAGCCCGGAGGAGGTGCTGGTGGCCAATGCGCTGTGGGTGACGGAGCGGGCCAACCCCTTCT
TCGTGCTGCAGCGACGCCGGGGCCACGGCAGGGGCGGGCCCTTACGGGTCTTCTCGTGGGCACCCTGGA
CGTGGTGTGACTCCAGTGCCCGGTGGCCCTTACCGCATCCTGCACCAGACCAGGACTCCCAGGTC
TACTGGACAGTGGCGTGTGGTCTTCCCGCAAAGAGATCACAAAACACTGGGAATGGCTGGAAAATAACT
TGCTCCAGACACTGTCCATCTTCGACAGTGAGGAAGATATCACCACCTTCGTCAAGGGCAAGATACACGG
AATCATCGCAGAAGAGAACAAGAACCTGCAGCCCCAGGGAGACGAGGACCCCGGAAGTTCAAGGAGGCT
GAGCTGAAGATGCGGAAGCAGTTTGGGATGCCTGAGGGCGAGAAGCTGGTGAATTACTACTCCTGCAGCT
ACTGGAAGGGCCGCTGCCCGGCGAGGGCTGGCTGTACCTGACGGTCAACCACCTGTGCTTCTACTCCTT
CCTGCTGGGGAAGGAAGTGAGCCTCGTGGTGCAGTGGGTGGACATAACCGCTCTGGAGAAGAAGCCACC
CTGCTCTCCCGAGAGCATCCGTGTGGACACCCGCGACCAGGAGCTCTTCTTCCATGTTCTCAACA
TCGGCGAGACCTCAAGCTCATGGAGCAGTTGGCCAACCTGGCCATGCGGCAGCTGCTGGACAGCGAGGG
CTTCTTGAGGACAAGGCCCTGCCTAGGCCATCCGGCCACACAGGAACATCTCAGCCCTGAAGCGAGAC
CTGGACGCCGAGCCAAGAATGAGTGCTACCGAGCCAGTTCCGGCTGCCAGGATGAGCGGCTAGACG
GCCACACAAGCTGCACCCTGTGGACGCCGTTCAACAAGCTGCACATCCCTGGCCAGATGTTATCTCCAA
CAACTACATCTGCTTCGCCAGCAAGGAGGAGGACGCTTGCCACCTCATCATACCCCTGAGGGAGGTGACC
ATTGTCGAAAAAGCTGACAGCTCCAGCGTGTGCCAGCCCCCTGTCCATCAGCACAAAAGCAAAATGA
CATTCTGTTTGCCAACCTGAAAGACCGTGATTTCTTGGTGCAGAGGATCTCTGACTTCTCCAGAAAAC
ACCATCAAGCAGCCAGGAGTATCGGGAGCAGGAAAGCCAGTGTGTGGACCCTAGCACAGAGTCTTCC
CCAGCTCCTCAGGAGGGTGGAGCAGCCGCCAGCCAGCCCTCCCTCAGCAGCCGCCAGAGCTTCT
GTGCGCAGGAGGCCAACCGCATCCCAGGCCGCTGTAAGCTCTCCAGAAAACCTGCCCATGGAGGA
CCTTGGAGCCAAGGGGCAAGGAGAAGATGAAAGAGGAGTCATGCCACATCCACTTCTTCGAGTACGGG



[View online »](#)

CGTGGCGTGTGCATGTACCGCACAGCCAAGACGCGGGCACTGGTCTGAAGGGTATCCCTGAGAGCCTCC
GGGGAGAGCTGTGGCTCCTTTCTCCGGGGCTGGAATGAGATGGTGACTCACCCGGGACTATGCTGA
GCTGGTGGAGAAGTCCACCGGAAGTACAGCCTGGCCACAGAGGAGATCGAGCGAGACCTGCACCCTCC
ATGCCCGAGCACCTGCCTTCCAGAACGAGCTGGGGATTGCTGCCCTCCGGCGGGTGTGACTGCCTATG
CCTTCCGAAACCCACCATCGGCTACTGCCAGGCAATGAACATCGTGACCTCGGTGCTCCTGCTCTATGG
CAGTGAGGAGGAGGCCTTCTGGCTCCTGGTGGCCCTGTGCGAGCGCATGCTGCCGACTACTACAACACC
AGGGTGGTGGGAGCCCTGGTGGACCAAGGCATCTTCGAAGAGCTCACGAGAGACTTCTGCCGACGCTCT
CGGAGAAGATGCAGGACCTGGGGGTGATCTCCAGCATCTCGCTGTCTGGTTCTTGACCCTTCTCCAG
CGTCATGCCCTTCGAGAGCGCCGTGGTTCATCGTCGACTGCTTTTTCTATGAGGGCATCAAGTGATCCTG
CAGGTGGCCCTGGCCGTCTGGACGCCAACATGGAGCAGCTGCTGGGCTGCAGCGACGAGGGCGAGGCCA
TGACCATGCTGGGAGATACCTGGATAATGTGGTCAACAAGCAGAGTGTCTCTCCTATCCCGCACCT
CCGTGCCCTTGTGAGCAGCAGCGATGACCCCTGCAGAGGTGGACATCTTTGAGCTCCTGAAAGTGCC
TATGAGAAATTCAGCAGCCTGAGGGCCGAAGACATTGAGCAGATGCGGTTTAAACAGAGGCTGAAAGTA
TCCAGTCTTGGAGGACCGCCAAGAGGAGTGGTCCGAGCTATACCTGTGGACATTGGTTTCTCCAT
TGAAGAGCTGGAGACCTTTACATGGTGTAAAGGCCAAGCACCTGGCTAGCCAGTACTGGGGTGCAGC
CGACAATGGCCGGCCGTCCGGGACCCAGCCTGCCCTACCTGGAGCAGTACCGGATTGATGCCAGCCAGT
TCCGGGAACCTTTGCCAGCCTGACACCCTGGGCTGTGGCTCCACACACCTCTGCTGGCAGGGCGCAT
GTTCAGGCTCCTGGACGAAAACAAGGACTCGTGATCAACTTCAAGGAGTTCGTGACAGGGATGAGCGGG
ATGTACCACGGGACCTGACAGAGAAGCTCAAGGTGCTCTACAAGCTACACCTTCCCCAGCTCTGAGCC
CAGAGGAAGCCGAGTCAAGCCTGGAGGGCGCCATTATTTACAGAGGACAGCTCCTCAGAAGAAGCACT
ACCACAGGAAGAGCAAGAAGGAAGTGAAGTGAAGGAGAGAGGAGAGGAGAAGGGGACCAGCTCTCCGGAC
TATCGGCACTACCTTCAATGTGGGCCAAGGAGAAAGAGGCTCAGAAGGAGACGATTAAGGATCTTCCCA
AGATGAACCAGGAGCAGTTCATTGAGCTGTGCAAGACGCTTTACAACATGTTCAAGTGAAGACCCCATGGA
GCAGGACCTGTACCACGCCATCGCCACCGTGGCCAGCCTCCTGCTCCGCATCGGAGAGGTGGGGAAGAAG
TTCTCAGCCCGCACAGGCAGGAAGCCAGGACTGTGCCACTGAGGAGGACGAGCCACCAGCACCCGAAC
TGCATCAGGACGACAGCCAGGAGCTTACGCCCCAGCTGCAGGAGACCCCAAGCCAAAGCAGGCGGAGA
CACACACCTCGGAAAAGCCACAGGAGAGCCAGGTGGTGGTGGAGGGGGCAGCGGGCAGGGACAGGGC
TCACCCTCCAGCTGCTGTCTGACGATGAAACCAAGACGACATGTCCATGTCCTCTACTCGGTGGTCA
GCACGGGCTCCCTGCAATGTGAAGACCTTGCAGACGACACGGTGTGGTGGGCGGGGAGGCTGCAGCCC
CACAGCGGCATCGGCGGCACCGTGCACCCGACTGGTGCATCTCCTTTGAGCAGATCCTGGCCTCCATC
CTGACGGAGTCCGTGCTGGTGAACCTTTTGAAGAGAGTGGACATTGGACTCAAGATCAAGGACCAAA
AGAAAGTGGAGAGACAGTTCAGCACCGCCAGTGACCATGAGCAGCCTGGAGTTTCCGGC

AGCGGACCGACGCGTACGCGGCCGCTCGAG - GFP Tag - GTTTAA

Protein Sequence: >RG217061 representing NM_015043
 Red=Cloning site Green=Tags(s)

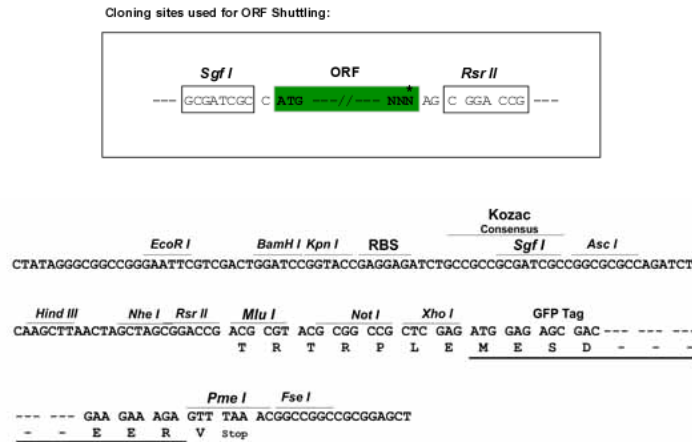
```

MWLSPEEVLVANALWVTERANPFFVLQRRRGHGRGGGLTGLLVGTLDDVLDSSARVAPYRILHQTQDSQV
YWTVACGSSRKEITKHWLENNLLQTL SIFDSEEDITTFVKGKIHGIIAEENKNLQPQGEDPGKFKEA
ELKMRKQFGMPEGEKLVNYYSCSYWKGRVPRQGWLYLTVNHLCFYSFLLGKEVSLVVQWVDITRLEKNAT
LLFPESIRVDTRDQELFFSMFLNIGETFKLMEQLANLAMRQLLDSEGFLEDKALPRPIRPHRNISALKRD
LDARAKNECYRATFRLPRDERLDGHTSCTLWTFPNKLHIPPQMFISNNYICFASKEEDACHLIIPLREVT
IVEKADSSSVLPSPLSISTKSKMTFLFANLKDRDFLVQRISDFLQKTPSKQPGSIGSRKASVDPSTESS
PAPQEGSEQPASPASPLSSRQSFCAQEAPTASQGLLKLQKNSPMEDLGAKGAKEKMKESWHIHFHEYG
RGVCMYRTAKTRALVLKGIPESLRGELWLLFSGAWNEMVTHPGYYAELVEKSTGKYSLATEEIERDLHRS
MPEHPAFQNELGIAALRRVL TAYAFRNPTIGYQAMNIVTSVLLL YGSEEEAFWLLVALCERMLPDYYNT
RVVGDLDVQDIFEEELTRDFLPQLSEKMQDLGVISSISLSWFLTLFLSVMFPFESAVVIVDCFFYEGIKVIL
QVALAVLDANMEQLLGCSDGEAMTMLGRYLDNVVNKQSVSPPIPHLRALLSSSDPPAEVDIFELLKVS
YEKFFSSLRAEDIEQMRFKQRLKVIQSL EDTAKRSVVRAIPVDIGFSIEELEDLYMVFKAKHLASQYWGCS
RTMAGRRDPSLPYLEQYRIDASQFREL FASLTPWACGSHTPLL AGRMFRLLDENKDSLINFKEFVTGMSG
MYHGDLTEKLVLYKLHLPALSPEEAESALEAAHYFTEDSSSEALPQEEQEGSGSEERGEKGTSSPD
YRHYLRMWAKEKEAQKETIKDLPKMNQEQFIELCKTLYNMFSEDPMEQDLYHAIATVASLLLRIGEYVGGK
FSARTGRKPRDCATEEDEPPAPELHQDAARELQPPAAGDPQAKAGGDTHLGKAPQESQVVVEGGSGEGQG
SPSQLLSDDETKDDMSMSSYSVSTGSLQCEDLADDTVLVGGEACSPTARIGGTVDTDWCISFEQILASI
LTESVLVNF FEKRVDIGL KIKDQKKVERQFSTASDHEQPGVSG
  
```

SGPTRRRLE - GFP Tag - V

Restriction Sites: SgfI-RsrII

Cloning Scheme:

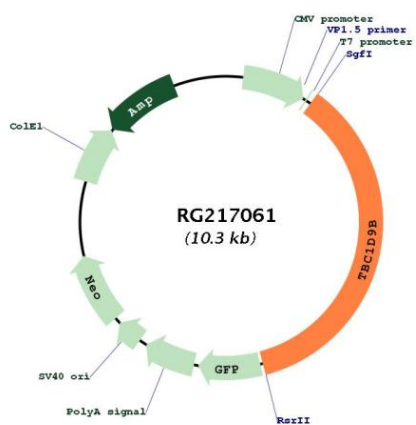


ACCN: NM_015043

ORF Size: 3699 bp

OTI Disclaimer:	The molecular sequence of this clone aligns with the gene accession number as a point of reference only. However, individual transcript sequences of the same gene can differ through naturally occurring variations (e.g. polymorphisms), each with its own valid existence. This clone is substantially in agreement with the reference, but a complete review of all prevailing variants is recommended prior to use. More info
OTI Annotation:	This clone was engineered to express the complete ORF with an expression tag. Expression varies depending on the nature of the gene.
Components:	The ORF clone is ion-exchange column purified and shipped in a 2D barcoded Matrix tube containing 10ug of transfection-ready, dried plasmid DNA (reconstitute with 100 ul of water).
Reconstitution Method:	<ol style="list-style-type: none"> 1. Centrifuge at 5,000xg for 5min. 2. Carefully open the tube and add 100ul of sterile water to dissolve the DNA. 3. Close the tube and incubate for 10 minutes at room temperature. 4. Briefly vortex the tube and then do a quick spin (less than 5000xg) to concentrate the liquid at the bottom. 5. Store the suspended plasmid at -20°C. The DNA is stable for at least one year from date of shipping when stored at -20°C.
RefSeq:	NM_015043.4
RefSeq Size:	5138 bp
RefSeq ORF:	3702 bp
Locus ID:	23061
UniProt ID:	Q66K14
Cytogenetics:	5q35.3
Domains:	EFh
Gene Summary:	May act as a GTPase-activating protein for Rab family protein(s).[UniProtKB/Swiss-Prot Function]

Product images:



Circular map for RG217061