

## Product datasheet for **RG217055**

### OPA1 (NM\_130833) Human Tagged ORF Clone

#### Product data:

Product Type:	Expression Plasmids
Product Name:	OPA1 (NM_130833) Human Tagged ORF Clone
Tag:	TurboGFP
Symbol:	OPA1
Synonyms:	BERHS; largeG; MGM1; MTDPS14; NPG; NTG
Mammalian Cell Selection:	Neomycin
Vector:	pCMV6-AC-GFP (PS100010)
E. coli Selection:	Ampicillin (100 ug/mL)



[View online »](#)

**ORF Nucleotide Sequence:**

>RG217055 representing NM\_130833  
 Red=Cloning site Blue=ORF Green=Tags(s)

TTTTGTAATACGACTCACTATAGGGCGGCCGGGAATTCGTGACTGGATCCGGTACCGAGGAGATCTGCC  
 GCC**CGGATCGCC**

ATGTGGCGACTACGTGGGCCGCTGTGGCCTGTGAGGTCTGCCAGTCTTTAGTGAACACAGCTCTGGAA  
 TAAAAGGAAGTTTACCACTACAAAACTACATCTGGTTTCACGAAGCATTATCATTACATCATCCTAC  
 CTTAAAGCTTCAACGACCCCAATTAAGGACATCCTTTCAGCAGTTCTCTCTCTGACAAAACCTTCTTTTA  
 CGTAAACTGAAATTCTCTCCAATTAATATGGCTACCAGCCTCGCAGGAATTTTGGCCAGCAAGATTAG  
 CTACGAGACTCTTAAACTTCGCTATCTCATACTAGGATCGGCTGTTGGGGTGGCTACACAGCCAAAA  
 GACTTTTGATCAGTGGAAAGATATGATACCGACCTTAGTGAATATAAATGGATTGTGCCTGACATTGTG  
 TGGGAAATTGATGAGTATATCGATTTTGGTTCTCCGGAAGAAACGGCGTTTAGAGCAACAGATCGTGGAT  
 CTGAAAGTGACAAGCATTAGAAAAGGGTCTGCTTGGTGAGCTCATTCTTTACAACAACAAATTCAAGA  
 GCATGAAGAGGAAGCGCGCAGAGCCGCTGGCCAATATAGCACGAGCTATGCCAACAGAAGCGCAAGGTG  
 TCAGACAAAAGAGAAAATTGACCAACTTCAGGAAGAACTTCTGCACACTCAGTTGAAGTATCAGAGAATCT  
 TGAACGATTAGAAAAGGAGAACAAGAATTGAGAAAATTAGTATTGCAGAAAGATGACAAAGGCATTCA  
 TCATAGAAAGCTTAAGAAATCTTTGATTGACATGTATTCTGAAGTCTTGATGTTCTCTCTGATTATGAT  
 GCCAGTTATAATACGCAAGATCATCTGCCACGGTTGTTGTGGTGGAGATCAGAGTGTGGAAAGACTA  
 GTGTGTTGGAAATGATTGCCAAGCTCGAATATCCCAAGAGGATCTGGGGAGATGATGACACGTTCTCC  
 AGTTAAGTGACTCTGAGTGAAGTCTCACCATGTGGCCCTATTTAAAGATAGTTCTCGGGAGTTGAT  
 CTTACCAAGAAGAAGATCTTGCAGCATTAAAGACATGAAATAGAACTTCGAATGAGGAAAAATGTGAAAG  
 AAGGCTGTACCGTTAGCCCTGAGACCATATCCTTAAATGTAAGGCGCCCTGGACTACAGAGGATGGTGTCT  
 TGTGACTTACCAGGTGTGATTAATACTGTGACATCAGGCATGGCTCCTGACACAAAAGGAACTATTTTC  
 AGTATCAGCAAAGCTTACATGCAGAATCCTAATGCCATCATACTGTGATTCAAGATGGATCTGTGGATG  
 CTGAACGCGATTTGTTACAGACTTGGTCAGTCAAATGGACCCTCATGGAAGGAGAACCATATTCGTTTT  
 GACCAAAGTAGACCTGGCAGAGAAAAATGTAGCCAGTCCAAGCAGGATTCAGCAGATAATTGAAGGAAAAG  
 CTCTTCCCAATGAAAGCTTTAGGTTATTTTGTGTTGTAACAGGAAAAGGGAACAGCTCTGAAAGCATTG  
 AAGCTATAAGAGAATATGAAGAAGATTTTTTTCAGAATCAAAGCTCCTAAAGACAAGCATGCTAAAGGC  
 ACACCAAGTGACTACAAGAAATTAAGCCTTGCAGTATCAGACTGCTTTTGGAAAATGGTACGAGAGTCT  
 GTTGAACAACAGGCTGATAGTTTCAAAGCAACACGTTTTAACCTTGAAACTGAATGGAAGAATAACTATC  
 CTCGCCTGCGGGAACCTGACCGAATGAACTATTTGAAAAAGCTAAAAATGAAATCCTTGATGAAGTTAT  
 CAGTCTGAGCCAGGTTACACCAAAACATTTGGGAGGAAATCCTTCAACAATCTTTGTGGGAAAAGATCA  
 ACTCATGTGATTGAAAACATCTACCTTCCAGCTGCGCAGACCATGAATTCAGGAACTTTTAAACCACAG  
 TGGATATCAAGCTTAAACAGTGGACTGATAAACAACCTTCTAATAAAGCAGTAGAGGTTGCTTGGGAGAC  
 CCTACAAGAAGAATTTCCCGCTTATGACAGAACCGAAAGGGAAGAGCATGATGACATATTTGATAAA  
 CTTAAAGAGGCCGTTAAGGAAGAAAGTATTAACGACACAAGTGAATGACTTTGCGGAGGACAGCTTGA  
 GGGTATTCAACACAATGCTTTGGAAGACCGATCCATATCTGATAAACAGCAATGGGATGCAGCTATTTA  
 TTTTATGGAAGAGGCTCTGCAGGCTCGTCTCAAGGATACTGAAAATGCAATTGAAAACATGGTGGGTCCA  
 GACTGGAAAAAGAGGTGTTTATACTGGAAGAATCGGACCCAAGAACAGTGTGTTTACAATGAAACCAAGA  
 ATGAATTGGAGAAGATGTTGAAATGTAATGAGGAGCACCCAGCTTATCTTGCAAGTATGAAATAACCAC  
 AGTCCGGAAGAACCTTGAATCCCGAGGAGTAGAAGTAGATCCAAGCTTGATTAAGGATACTTGGCATCAA  
 GTTTATAGAAGACATTTTTTAAAAACAGCTCTAAACCATTGTAACCTTTGTGCAAGAGGTTTTTATTACT  
 ACCAAAGGCATTTTGTAGATTCTGAGTTGGAATGCAATGATGTGGTCTTGTTTTGGCGTATACAGCGCAT  
 GCTTGCTATACCCGCAAATACTTAAAGGAACAACCTTACAATACTGAAGTTAGGCGATTAGAGAAAAAT  
 GTTAAAGAGGTATTGGAAGATTTTGTGTAAGATGGTGAAGAAGATTAATGCTTACTGGTAAACGCG  
 TTCAACTGGCGGAAGACCTCAAGAAAGTTAGAGAAATTCAGAAAAACTTGATGCTTTCATTGAAGCTCT  
 TCATCAGGAGAAA

AG**CGGACCG**ACGCGTACGCGGCCGCTCGAG - GFP Tag - GTTTAA

Protein Sequence: >RG217055 representing NM\_130833  
 Red=Cloning site Green=Tags(s)

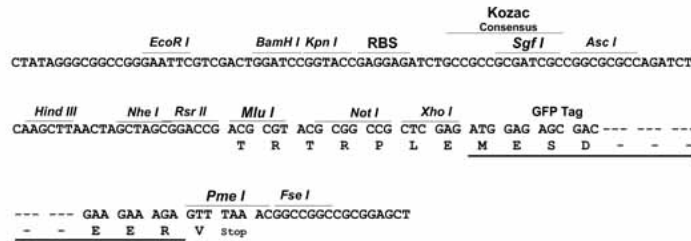
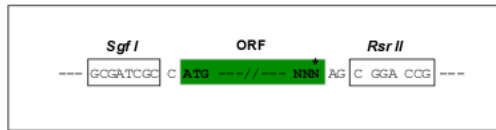
MWRLRRAAVACEVCQSLVKHSSGIKGSPLQLKHLVSRSIYHSHHPTLKLQRPQLRTSFQFSSLTNLPL  
 RKLKFSPIKYGYQPRNFWPARLATRLLKLYLILGSAVGGGYTAKKTFDQWKDMIPDLSEYKWI  
 VPDIWWEIDEYIDFGSPEETAFRATDRGSESDKHFRKGLLGELILLQQIQEHEEEARRAAGQYST  
 SYAQQKRKVSDKEKIDQLQEELLHTQLKYQRILERLEKENKELRKLVLQKDDKGIHHRKLLKSL  
 IDMYSEVLDVLSDYDASYNTQDHLPRVVVVDQSQAGKTSVLEMI AQARIFPRGSGEMMTRSPVKVTL  
 SEGPHHVALFKDSSREFDLTKEEDLAALRHEIELMRKNVKEGCTVSPETISLNVKGPGLQRMVLDLPGV  
 INTVTSGMADTKETIFSISKAYMQNPNAIILCIQDGSVDAERSIVTDLVSQMDPHGRRTIFVLTKV  
 DLAEKNVSPSRIQQIIEGKLFPMKALGYFAVVTGKGNSSIEAIREYEEFFQNSKLLKTSMLKAHQV  
 TTRNLSLAVSDCFWKMVRESVEQQADSFKATRFNLETEWKNNYPRLELDRNELFEKAKNEILDEVI  
 SLSQVTPKHWEELQQLSWERVSTHVIENIYLPAAQTMNSGTFNTTVDIKLKQWTDKQLPNKAVEVA  
 WETLQEEFSRFMTEPKGKEHDDIFDKLKEAVKEESIKRHKWNDF AEDSLRVIQHNALEDRSISDKQ  
 QWDAAIYFMEEALQARLKDTENAIENMVGPDWKKRWLYWKNRTQEQC VHNETKNELEKMLK  
 CNEEHPAYLASDEITTVRKNLESRGVEVDP SLIKDTHWQVYRRHFLKTALNHCNLCRRGFY  
 YQRHFVDSELECNDDVLFWRIQRLAITANTLRQQLTNTVEVRRLEKNVKEVLEDAEDGEEKIKLL  
 TGKRVQLAEDLKKVREIQEKLDAFIEALHQEK

SGPTRRRLE - GFP Tag - V

Restriction Sites: SgfI-RsrII

Cloning Scheme:

Cloning sites used for ORF Shuttling:

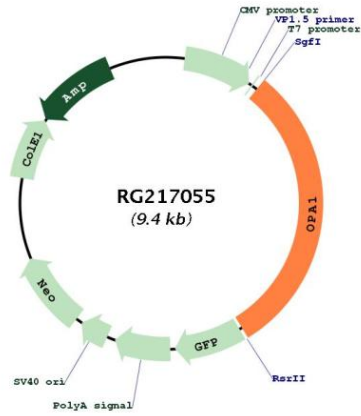


ACCN: NM\_130833

ORF Size: 2883 bp

<b>OTI Disclaimer:</b>	The molecular sequence of this clone aligns with the gene accession number as a point of reference only. However, individual transcript sequences of the same gene can differ through naturally occurring variations (e.g. polymorphisms), each with its own valid existence. This clone is substantially in agreement with the reference, but a complete review of all prevailing variants is recommended prior to use. <a href="#">More info</a>
<b>OTI Annotation:</b>	This clone was engineered to express the complete ORF with an expression tag. Expression varies depending on the nature of the gene.
<b>Components:</b>	The ORF clone is ion-exchange column purified and shipped in a 2D barcoded Matrix tube containing 10ug of transfection-ready, dried plasmid DNA (reconstitute with 100 ul of water).
<b>Reconstitution Method:</b>	<ol style="list-style-type: none"><li>1. Centrifuge at 5,000xg for 5min.</li><li>2. Carefully open the tube and add 100ul of sterile water to dissolve the DNA.</li><li>3. Close the tube and incubate for 10 minutes at room temperature.</li><li>4. Briefly vortex the tube and then do a quick spin (less than 5000xg) to concentrate the liquid at the bottom.</li><li>5. Store the suspended plasmid at -20°C. The DNA is stable for at least one year from date of shipping when stored at -20°C.</li></ol>
<b>RefSeq:</b>	<a href="#">NM_130833.1</a> , <a href="#">NP_570846.1</a>
<b>RefSeq Size:</b>	5867 bp
<b>RefSeq ORF:</b>	2886 bp
<b>Locus ID:</b>	4976
<b>UniProt ID:</b>	<a href="#">O60313</a>
<b>Cytogenetics:</b>	3q29
<b>Gene Summary:</b>	The protein encoded by this gene is a nuclear-encoded mitochondrial protein with similarity to dynamin-related GTPases. The encoded protein localizes to the inner mitochondrial membrane and helps regulate mitochondrial stability and energy output. This protein also sequesters cytochrome c. Mutations in this gene have been associated with optic atrophy type 1, which is a dominantly inherited optic neuropathy resulting in progressive loss of visual acuity, leading in many cases to legal blindness. [provided by RefSeq, Aug 2017]

Product images:



Circular map for RG217055