

Product datasheet for **RG217054**

AF4 (AFF1) (NM_005935) Human Tagged ORF Clone

Product data:

Product Type:	Expression Plasmids
Product Name:	AF4 (AFF1) (NM_005935) Human Tagged ORF Clone
Tag:	TurboGFP
Symbol:	AFF1
Synonyms:	AF4; MLLT2; PBM1
Mammalian Cell Selection:	Neomycin
Vector:	pCMV6-AC-GFP (PS100010)
E. coli Selection:	Ampicillin (100 ug/mL)
ORF Nucleotide Sequence:	>RG217054 representing NM_005935 Red=Cloning site Blue=ORF Green=Tags(s)

TTTTGTAATACGACTCACTATAGGGCGGCCGGAATTCGTCGACTGGATCCGGTACCGAGGAGATCTGCC
GCC**CGATCGCC**

ATGGCAGCCCAGTCAAGTTTGTACAATGACGACAGAACTGCTTCAATTAGAGAGAAGGAAAGACGCA
ACCAGGAAGCCCACCAAGAGAAAGAGGCATTTCTGAAAAGATCCCTTTTTGGAGAGCCCTACAAGC
AGCAAAAGGTGATGAGCTGTCTAGTCGAATACAGAACATGTTGGGAACTACGAAGAAGTGAAGGAGTTC
CTTAGTACTAAGTCTCACACTCATCGCTGGATGCTTCTGAAAAAGGTTGGGAAAGCCGAAATATCCTT
TAATTCCTGACAAAGGGAGCAGCATTCCATCCAGCTCCTCCACACTAGTGTCCACCACCACTCCATTCA
CACTCCTGCGTCTGGACCACTTTCTGTTGGCAACATTAGCCACAATCCAAGATGGCGCAGCCAAGAAGT
GAACCAATGCCAAGTCTCCATGCCAAAAGCTGCGGCCACCGGACAGCCAGCACCTGACCCAGGATCGCC
TTGGTCAGGAGGGTTCCGGCTCTAGTCATCACAAGAAAGGTGACCGAAGAGCTGACGGAGACCCTGTGC
TTCGGTGACAGATTCCGGCTCCAGAGAGGGAGCTTTCTCCCTTAATCTCTTTGCCTTCCCCAGTCCCCCT
TTGTCACTATACATTCCAACAGCAAATCTTCCCGGACGCAAGGAAGCAGCAAGGTTTCATGGCAGCA
GCAATAACAGTAAAGGCTATTGCCAGCCAAATCTCCAAGGACCTAGCAGTGAAGTCCATGATAAAGA
GACCCCTCAAGACAGTTTGGTGGCCCTGCCAGCCGCTTCTCAGACATTTCCACCTCCCTCCCTCCCT
TCAAAAAGTGTTGCAATGCAGCAGAAAGCCACGGCTTATGTCCGGCCCATGGATGGTCAAGATCAGGCC
CTAGTGAATCCCCTGAACTGAAACCACTGCCGGAGGACTATCGACAGCAGACCTTTGAAAAAACAGACTT
GAAAGTGCTGCCAAAGCCAAGCTCACAAACTGAAGATGCCTTCTCAGTCAGTTGAGCAGACCTACTCC
AATGAAGTCCATTGTGTTGAAGAGATTCTGAAGGAAATGACCCATTTCATGGCCGCTCCTTTGACAGCAA
TACATACGCCTAGTACAGCTGAGCCATCCAAGTTTCTTTCCCTACAAAGGACTCTCAGCATGTCAGTTC
TGTAACCCAAAACCAAAAACAATATGATACATCTTCAAAAACCTCAATTTCTCAGCAAGGAACGTCA
TCCATGCTCGAAGACGACCTTCAGCTCAGTGACAGTGAGGACAGTGACAGTGAACAAACCCAGAGAAGC
CTCCCTCCTCATCTGCACCTCCAAGTGTCCACAGTCCCTTCCAGAACAGTGGCATCAGCACATCCAG
CAGTGACAGAGTCAAGAACACCAAGTACTCAGACAGTTTCTCAGACTCAGAGAGCGAGAGCAGTTCAAGT



[View online »](#)

GACAGCGAAGAAAATGAGCCCCTAGAAACCCAGCTCCGGAGCCTGAGCCTCCAACAACAAACAAATGGC
AGCTGGACAACCTGGCTGACCAAAGTCAGCCAGCCAGCTGCGCCACCAGAGGGCCCCAGGAGCACAGAGCC
CCCACGGCGGCACCCAGAGAGTAAGGGCAGCAGCGACAGTGCACGAGTCAGGAGCATTCTGAATCCAAA
GATCCTCCCCCTAAAAGCTCCAGCAAAGCCCCCGGGCCCCACCCGAAGCCCCCACCCGGAAAGAGGA
GCTGTGAGAAGTCTCCGGCACAGCAGGAGCCCCCAAAGGCAAAACCGTTGGAACCAACAACCCAAAAA
ACCTGTCAAGGCCTCTGCCGGGCAGGTTACGGACCAGCCTGCAGGGGAAAGGGAGCCAGGGCTTCTT
CCCTATGGCTCCCGAGACCAGACTTCCAAGACAAGCCCAAGGTGAAGACGAAAGGACGGCCCCGGGCCG
CAGCAAGCAACGAACCCAAGCCAGCAGTGCCCCCTCCAGTGAGAAGAAGAAGCACAAGAGCTCCCTCCC
TGCCCCCTCTAAGGCTCTCTCAGGCCAGAACCCGCAAGGACAATGTGGAGGACAGGACCCTGAGCAC
TTTGCTCTTGTCCCTGACTGAGAGCCAGGGCCACCCACAGTGGCAGCGGCAGCAGGACTAGTGGCT
GCCGCAAGCCGTGGTGGTCCAGGAGGACAGCCGCAAAGACAGACTCCCATTGCCTTTGAGAGACACCAA
GCTGCTCTCACCGCTCAGGGACTCTCCCCACAAAGCTTGATGGTGAAGATCACCTAGACCTGCTC
TCTCGGATACCCAGCCTCCCGGAAGGGGAGCCGCCAGAGGAAAGCAGAAGATAAACAGCCGCCCGCAG
GGAAGAAGCACAGCTCTGAGAAGAGGAGCTCAGACAGCTCAAGCAAGTTGGCCAAAAGAGAAAGGGTGA
AGCAGAAAAGAGACTGTGATAACAAGAAAATCAGACTGGAGAAGGAAATCAAATCACAGTCATCTTATCT
TCATCCTCCACAAAAGATCTTCTAAAACAAAGCCCTCCAGGCCCTCCTCACAGTCTCAAAGAAGGAAA
TGCTCCCCCGCCACCCGTGCTCCTCGTCTCCAGAAAGCCAGCCAAAGCCTGCACTTAAGAGGTCAAGGCG
GGAAGCAGACACCTGTGGCCAGGACCCTCCAAAAGTGCCAGCAGTACCAAGAGCAACCACAAAAGACTCT
TCCATTCCAAGCAGAGAAGAGTAGAGGGGAAGGGCTCCAGAAGTCTCGGAGCACAAGGGTTCTTCCG
GAGATACTGCAATCCTTTTCCAGTGCCTTCTTGGCAAATGGTAACTCTAAACCAGGGAAGCCTCAAGT
GAAGTTTGACAAACAACAAGCAGACCTTCACATGAGGGAGGCAAAAAGATGAAGCAGAAAGCAGAGTTA
ATGACGGACAGGGTTGAAAGGCTTTTAAAGTACCTGGAAGCCGTCTTGTCTTATTGAGTGCAGGAAATG
CCACAGAGTCTGAAAGCCAGTCATCCAAGTCAGCTTACTCTGTCTACTCAGAAACTGTAGATCTCATTAA
ATTCATAATGTCATTAATAATCCTTCTCAGATGCCACAGCGCCAACAAGAGAAAAATATTTGCTGTTTTA
TGCATGCGTTGCCAGTCCATTTTGAACATGGCGATGTTTCGTTGTAAAAAAGACATAGCAATAAAGTATT
CTCGTACTCTTAATAAACACTTCGAGAGTCTTCCAAAAGTCGCCAGGCACCTTCTCCATGCATTGCAAG
AAGCACAGGCACACCATCCCCTCTTCCCAATGCCTTCTCCTGCCAGCTCCGTAGGGTCCAGTCAAGT
GCTGGCAGTGTGGGGAGCAGTGGGGTGGCTGCCACTATCAGCACCCAGTCACCATCCAGAATATGACAT
CTTCTATGTACCATCACATCCATGTTCTTACCGCCTTTGACCTTTGGGAACAGGCCGAGGCCCTCAC
GAGGAAGAATAAAGAATTCTTTGCTCGGCTCAGCACAAATGTGTGCACCTTGGCCCTCAACAGCAGTTG
GTGGACCTGGTGCATATACACGACAGGGTTTTACAGCAGCTACAAGAATTAACCAAAACACCT

ACGCGTACGCGGCCGCTCGAG - GFP Tag - GTTTAA

Protein Sequence: >RG217054 representing NM_005935
 Red=Cloning site Green=Tags(s)

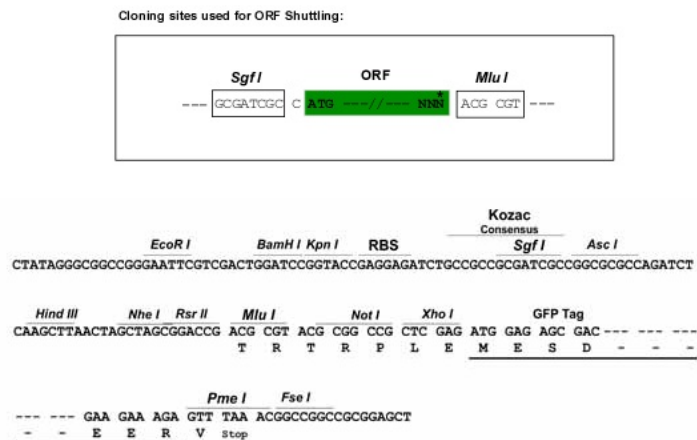
MAAQSSLYNDNRNLLRIREKERRNQEAEHQEKEAFPEKIPLFGEPYKTAKGDESSRIQNMLGNYEEVKEF
 LSTKSHTHRLDASENRLGPKYPLIPDKGSSIPSSSFHTSVHHQSIHTPASGPLSVGNISHNPKMAQPT
 EPMPSLHAKSCGPPDSQHLTQDRLGQEGFGSSHHKGDRRADGDHCASVTD SAPERELSPLISLSPVPP
 LSPIHNSQQTLPRTQGSSKVHGSSNNSKGYCPAKSPKDLAVKVHDKETPQDSL VAPAQPPSQTFPPPSLP
 SKSVAMQKPTAYVRPMDGQDQAPSESPCLKPLPEDYRQQTFEKDLKVPKAKLTKLKMPSSQSVQETYS
 NEVHCVEEILKEMTHSWPPPLTAIHTPSTAEPKFPFPTKDSQHVSSVTQNKQYDTSSKTHSNSQQGTS
 SMLEDDLQLSDSESDSEQTPEKPPSSSAPPSAPQSLPEPVASAHSSAESESTSDSDSSDSESESSSS
 DSEENELETPAPEPEPPTTNKWLNDWTKVVSQPAAPPEGPRSTEP RRRHPEKSGSSDSATSQEHSEK
 DPPPKSSSKAPRAPPEAPHPGKRSCQKSPAQQEPPQRQTVGKQPKPKVKASARAGSRTSLQGEREPGLL
 PYGSRDQTSKDKPKVKTKGRPRAAASNEPKPAVPPSSEKHKHSSL PASKALSGPEPAKDNVEDRTPHEH
 FALVPLTESQGGPHSGSRTSGCRQAVVVQEDSRKDRLLPLRDTKLLSPLRDTPPPQSLMVKITLDLL
 SRIPQPPGKSGSRQKAEDKQPPAGKKHSEKRSSDSSSKLAKKRKGEAERDCDNKKIRLEKEIKSQSSSS
 SSSHKESKTKPSRPSSQSSKEMLPPPPVSSSQKPAKPAKRSRREADTCGQDPPKSASSTKSNHKDS
 SPIKQRRVEGKGRSSSEHKGSSGDTANFPVPSLPNGNSKPGKPVKFDKQADLHMREAKMKQKAEAL
 MTDVRGKAFKYLEAVLSFIECGIATESESQSSKSAYSVYSETVDLIKFIIMSLKSFSDATAPTEKIFAVL
 CMRCQSILNMAMFRCKKDIKYSRTL NKFESSKVAQAPSPCIARSTGTPSPLSPMPSPASSVGSQSS
 AGSVGSSGVAATISTPVTIQNMTSSYVTITSHVLTAFDLWEQAEALTRKNKEFFARLSTNVCTLALNSSL
 VDLVHYTRQGFQQLQELTKTP

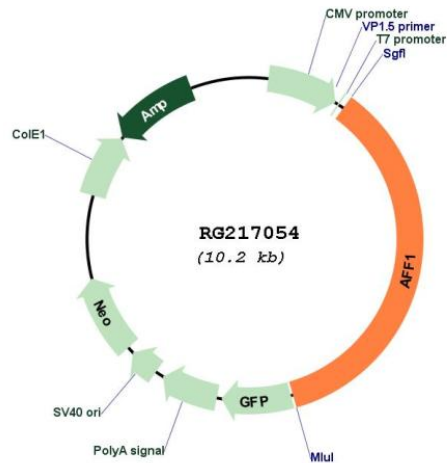
TRTRPLE - GFP Tag - V

Restriction Sites:

SgfI-MluI

Cloning Scheme:



Plasmid Map:


ACCN: NM_005935

ORF Size: 9375 bp

OTI Disclaimer: The molecular sequence of this clone aligns with the gene accession number as a point of reference only. However, individual transcript sequences of the same gene can differ through naturally occurring variations (e.g. polymorphisms), each with its own valid existence. This clone is substantially in agreement with the reference, but a complete review of all prevailing variants is recommended prior to use. [More info](#)

OTI Annotation: This clone was engineered to express the complete ORF with an expression tag. Expression varies depending on the nature of the gene.

Components: The ORF clone is ion-exchange column purified and shipped in a 2D barcoded Matrix tube containing 10ug of transfection-ready, dried plasmid DNA (reconstitute with 100 ul of water).

Reconstitution Method:

1. Centrifuge at 5,000xg for 5min.
2. Carefully open the tube and add 100ul of sterile water to dissolve the DNA.
3. Close the tube and incubate for 10 minutes at room temperature.
4. Briefly vortex the tube and then do a quick spin (less than 5000xg) to concentrate the liquid at the bottom.
5. Store the suspended plasmid at -20°C. The DNA is stable for at least one year from date of shipping when stored at -20°C.

RefSeq: [NM_005935.1](#), [NP_005926.1](#)

RefSeq Size: 9390 bp

RefSeq ORF: 3633 bp

Locus ID: 4299

UniProt ID: [P51825](#)

Cytogenetics: 4q21.3-q22.1

Domains:	AF-4
Protein Families:	Transcription Factors
Gene Summary:	<p>This gene encodes a member of the AF4/ lymphoid nuclear protein related to the Fragile X E syndrome (FRAXE) family of proteins, which have been implicated in human childhood lymphoblastic leukemia, fragile chromosome X intellectual disability, and ataxia. It is the prevalent mixed-lineage leukemia fusion gene associated with spontaneous acute lymphoblastic leukemia. Members of this family have three conserved domains: an N-terminal homology domain, an AF4/ lymphoid nuclear protein domain, and a C-terminal homology domain. The protein functions as a regulator of RNA polymerase II-mediated transcription through elongation and chromatin remodeling functions. Through RNA interference screens, this gene has been shown to promote the expression of CD133, a plasma membrane glycoprotein required for leukemia cell survival. Alternative splicing results in multiple transcript variants. [provided by RefSeq, Jul 2017]</p>