

Product datasheet for **RG217052**

CACNA2D4 (NM_172364) Human Tagged ORF Clone

Product data:

Product Type:	Expression Plasmids
Product Name:	CACNA2D4 (NM_172364) Human Tagged ORF Clone
Tag:	TurboGFP
Symbol:	CACNA2D4
Synonyms:	RCD4
Mammalian Cell Selection:	Neomycin
Vector:	pCMV6-AC-GFP (PS100010)
E. coli Selection:	Ampicillin (100 ug/mL)
ORF Nucleotide Sequence:	>RG217052 representing NM_172364 Red=Cloning site Blue=ORF Green=Tags(s)

TTTTGTAATACGACTCACTATAGGGCGGCCGGAATTCGTCGACTGGATCCGGTACCGAGGAGATCTGCC
GCC**CGATCGCC**

ATGGTCTGTGGCTGCTCTGCCCTCCTTCCCCTCCCCAACCCAGGCCACCATGCCTGCAACTCCCAACT
TCCTCGAAACCCAGCTCCAGCAGCCGCTGGATTCCCCTCCAGCCAATGCCCGTGGCCTGGGCCTTTGT
GCAGAAGACCTCGGCCCTCCTGTGGCTGCTGCTCTAGGCACCTCCCTGTCCCCTGCGTGGGACAGGCC
AAGATTCCTCTGAAACAGTGAAGCTATGGCTGACACCTTCGGCGGGGACCTGTATAAACTGTGACCA
AATACTCAGGCTCTCTTTGCTGCAGAAGAAGTACAAGGATGTGGAGTCCAGTCTGAAGATCGAGGAGGT
GGATGGCTTGGAGCTGGTGAAGGATTCAGAGGACATGGAGAACATGCTGCGGAGGAAAGTCGAGGCC
GTCCAGAATCTGGTGAAGCTGCCGAGGAGGCCGACCTGAACCACGAATCAATGAATCCCTGGTGTTCG
ACTATTAACTCGGTCCTGATCAACGAGAGGGACGAGAAGGGCAACTTCGTGGAGCTGGGCGCCGAGTT
CCTCCTGGAGTCCAATGCTCACTTCAGCAACCTGCCGGTGAACACCTCCATCAGCAGCGTGCAGTGCC
ACCAACGTGTACAACAAGACCCAGATATTTAAATGGAGTCTACATGTCTGAAGCCTTGAATGCTGTCT
TCGTGGAGAACTCCAGAGAGACCAACGTTGACCTGGCAATATTTGGCAGTGAACCTGGATTCTTCAG
GATCTATCCAGGTATAAAATGGACACCTGATGAGAATGGAGTCACTACTTTTACTGCGCAAAACCGCGG
TGGTACATCAAGCTGCTACTTCTCCAAGGACATAGTGATTTTGGTGGACGTGAGCGGCAGTATGAAG
GGCTGAGGATGACTATTGCCAAGCACACCATCACCACCATCTTGACACCCTGGGGGAGAATGACTTCGT
TAATATCATAGCGTACAATGACTACGTCCATTACATCGAGCCTTGTTTTAAAGGGATCCTCGTCCAGGCG
GACCGAGACAATCGAGAGCATTTCAAAGTCTGGTGGAGGAGTTGATGGTCAAAGGTGTGGGGTCTGG
ACCAAGCCCTGAGAGAAGCCTTCCAGATCCTGAAGCAGTTCCAAGAGGCCAAGCAAGGAAGCCTCTGCAA
CCAGGCCATCATGCTCATCAGCGACGGCGCCGTGGAGGACTACGAGCCGGTGTGAGAAGTAACTGG
CCAGACTGTAAGGTCCGAGTTTTCACTTACCTCATTGGGAGAGAAGTGTCTTTGCTGACCGCATGAAGT
GGATTGCATGCAACAACAAGGCTACTACAGCAGATCTCAACGCTGGCGGACACCCAGGAGAACGTGAT
GGAATACCTGCAGTGCTCAGCCGCCCATGGTCATCAACCACGACCACGACATCATCTGGACAGAGGCC



[View online »](#)

TACATGGACAGCAAGCTCCTCAGCTCGCAGGCTCAGAGCCTGACTGCTCACCCTGTGGCCATGCCAG
TCTTCAGCAAGAAGAACGAAACGCGATCCCATGGCATTCTCTGGGTGTGGTGGGCTCAGATGTGGCCCT
GAGAGAGCTGATGAAGCTGGCGCCCGGTACAAGCTTGGAGTGCACGGATACGCCTTTCTGAACACCAAC
AATGGCTACATCCTCTCCCATCCCGACCTCCGGCCCTGTACAGAGAGGGGAAGAACTAAAACCCAAAC
CTAACTACAACAGTGTGGATCTCTCCGAAGTGGAGTGGGAAGACCAGGCTGAATCTCTGAGAACGCCAT
GATCAATAGGGAACAGTACTCTCTCGATGGATGTGAAGTTCGATGGATAAAGGGAAGCGAGTCTT
TTCTTGACCAATGACTACTTCTTACGGACATCAGCGACACCCCTTTCAGTTTGGGGTGGTGTCTCC
GGGCCACGGAGAATACATCCTTCTGGGGAACAGTCTGTGGAAGAAGGCCTGCATGACTTGCTCACC
AGACCTGGCCCTGGCCGGTACTGGATCTACTGCATCACAGATATTGACCCAGACCACCGGAAGCTCAGC
CAGCTAGAGGCCATGATCCGCTTCTCACCAGGAAGACCAGACCTGGAGTGTGACGAGGAGCTGGTCC
GGGAGGTGCTGTTTGACGCGGTGGTACAGCCCCATGGAAGCCTACTGGACAGCGCTGGCCCTCAACAT
GTCCGAGGAGTCTGAACACGTGGTGGACATGGCCTTCTGGCACCCGGGCTGGCCTCTGAGAAGCAGC
TTGTTCTGGGCTCCGAGAAGTCTCCGACAGGAAGTCTGACACCTGAGGACGAGGCCAGCGTGTTC
CCCTGGACCGCTCCCGCTGTGGTACCACCAGGCTCAGAGCATCTGCTGGCAGCTTCGCTTCAACCT
CCGCTGGCAGAAGGACCAGAAAGTGGGGTGAACCCATGGTGGTACGCGCAAGCACAGCTGTGGCGGT
ACCGTGGACAAGAGGACAGCCATTGCTGCAGCCGCGGGCTCAAATGAAGCTGGAATTCCTCCAGCGCA
AATTCTGGGCGGCAACGCGGCAGTGCAGCACTGTGGATGGGCCGTGCACACAGAGCTGCGAGGACAGTGA
TCTGGACTGCTTCGTCATCGACAACAACGGGTTTATTCTGATCTCCAAGAGTCCCGAGAGACGGGAAGA
TTTCTGGGGGAGTGGATGGTGTCTCTGACCCAGCTGCTCAGCATGGGGTGTTCAGCCAAGTACTA
TGTATGACTATCAGGCCATGTGCAAAACCTCGAGTCAACACACAGTGCAGCCAGCCCTGGTACAGCC
AATTTCTGCCTTCTTACGGCGACAGGTGGTGTCTGCAGGAGCTGGTGTCTTCTGCTGGAGTGGAGT
GTCTGGGGCTCTGGTACGACAGAGGGGCGAGGCCAAAAGTGTCTTCCATCACTCCACAACACAAGA
AGCAGGACCCGCTGCAGCCCTGCGACACGGAGTACCCCGTGTTCGTGTACCAGCCGGCCATCCGGGAGC
CAACGGGATCGTGGAGTGCGGGCCCTGCCAGAAAGTATTTGTGGTGCAGCAGATTCCTCAACAGTAACTC
CTCCTCTGCTGACAGACCCACCTGTGACTGCAGCATCTTCCACCAGTGTGCAGGAGGCGACAGAAG
TCAAATAAATGCCTCTGTCAAATGTGACCGGATGCGCTCCAGAAGCTCCGCGGCGACACAGACTCTG
CCACGCTTCCATCCAGAGGAGAATGCCAGGACTGCGGCGGCGCCTCGGACACCTCAGCCTCGCCGCC
CTACTCTGCTGCTGTGTGCTGGGGCTACTGCCCAACTCTGCGG

ACGCGTACGCGGCGCTCGAG – GFP Tag – GTTTAA

Protein Sequence:

>RG217052 representing NM_172364
Red=Cloning site Green=Tags(s)

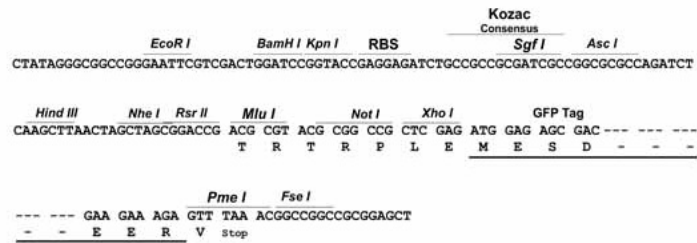
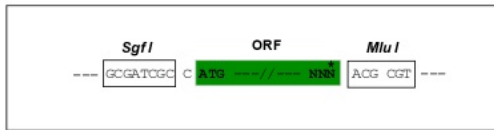
MVCGCSALLPLPNRPTMPATPNFLANPSSSRWIPLQPMPVAWAFVQKTSALLWLLLLGTSLSPAWGQA
KIPLLETVKLWADTFGGDLNVTVKYSGSLLLQKKYKDVESSLKIEEVDGLELVRKFSEDMENMLRRKVEA
VQNLVEAAEEADLNHEFNESLVDYYSVLIINERDEKGNFVELGAEFLLESNAHFSNLPVNTSISVQLP
TNVYNKDPDILNGVYMSEALNAVFVENFQRDPTLTWQYFGSATGFFRIYPIKWTPEENGVITFDCRNRG
WYIQAATSPKDIVILVDVSGSMGLRMTIAKHTITITLDTLGENDFVNIAYNDYVHYIEPCFKGILVQA
DRDNREHFKLLVEELMVKGVGVDQALREAFQILKQFQEAQKQGLCNQAIMLISDGAVEDYEPVFEKYNW
PDKVVRVFTYLIGREVSFADRMKWIACNNKGYTQISTLADTQENVMEYLHVL SRPMVINHDHDIWTEA
YMSKLLSSQAQSLTLLTTVAMPVFSKKNETRSHGILLGVVGSVALRELMKLAPRYKLVGHYAFNLNTN
NGYILSHPDLRPLYREGKLLKPKPNYSVDLSEVEWEDQAESLRTAMINRETGTL SMDVKVPMDKGRVL
FLTNDYFFTDISDTPFSLGVVLSRHHGEYILLGNTSVEEGLHDLLHPDLALAGDWIYICITDIDPHRKL
QLEAMIRFLTRKDPDLECEELVREVLFAVVTAPMEAYWTALALNMSEESEHVDMFLGTRAGLLRSS
LFGSEKVS DRKFLTPEDEASVFTLDRFPLWYRQASEHPAGSFVFNLRWAE GPESAGEPMVVTASTAVAV
TVDKRTAIAAAAGVQMKLEFLQRKFWAATRQCSTVDGPCTQSCEDSDLCFVIDNNGFILLISKRSRETGR
FLGEVDGAVLTQLLSMGVFSQVTMYDYQAMCKPSSHHSAAQPLVSPISAFLTATRWLLQELVLFLEWS
VWGSWYDRGAEAKSVFHSHKHKQDPLQPCDTEYPVFVYQPAIREANGIVECGPCQKVFVYQIPNSNL
LLLVTDPDTCDSIFPPVLQEATEVKYNASVKCDRMSQKLRRRPDSCHAFHPEENAQDCGGASDTSASPP
LLLLPVCAWGLLPQLLR

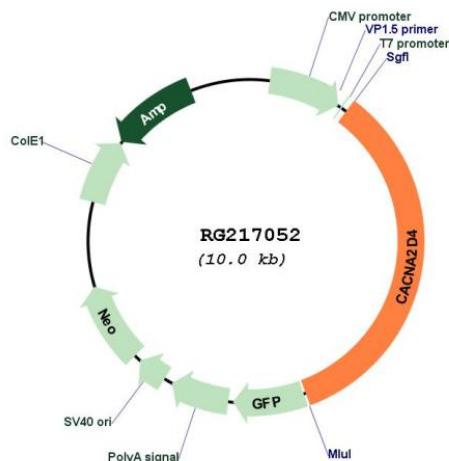
TRTRPLE – GFP Tag – V

Restriction Sites: SgfI-MluI

Cloning Scheme:

Cloning sites used for ORF Shuttling:



Plasmid Map:


ACCN: NM_172364

ORF Size: 3411 bp

OTI Disclaimer: Due to the inherent nature of this plasmid, standard methods to replicate additional amounts of DNA in *E. coli* are highly likely to result in mutations and/or rearrangements. Therefore, OriGene does not guarantee the capability to replicate this plasmid DNA. Additional amounts of DNA can be purchased from OriGene with batch-specific, full-sequence verification at a reduced cost. Please contact our customer care team at custsupport@origene.com or by calling 301.340.3188 option 3 for pricing and delivery.

The molecular sequence of this clone aligns with the gene accession number as a point of reference only. However, individual transcript sequences of the same gene can differ through naturally occurring variations (e.g. polymorphisms), each with its own valid existence. This clone is substantially in agreement with the reference, but a complete review of all prevailing variants is recommended prior to use. [More info](#)

OTI Annotation: This clone was engineered to express the complete ORF with an expression tag. Expression varies depending on the nature of the gene.

Components: The ORF clone is ion-exchange column purified and shipped in a 2D barcoded Matrix tube containing 10ug of transfection-ready, dried plasmid DNA (reconstitute with 100 ul of water).

Reconstitution Method:

1. Centrifuge at 5,000xg for 5min.
2. Carefully open the tube and add 100ul of sterile water to dissolve the DNA.
3. Close the tube and incubate for 10 minutes at room temperature.
4. Briefly vortex the tube and then do a quick spin (less than 5000xg) to concentrate the liquid at the bottom.
5. Store the suspended plasmid at -20°C. The DNA is stable for at least one year from date of shipping when stored at -20°C.

RefSeq:	NM_172364.3 , NP_758952.3
RefSeq Size:	5343 bp
RefSeq ORF:	3414 bp
Locus ID:	93589
UniProt ID:	Q7Z3S7
Cytogenetics:	12p13.33
Protein Families:	Druggable Genome, Ion Channels: Other
Protein Pathways:	Arrhythmogenic right ventricular cardiomyopathy (ARVC), Cardiac muscle contraction, Dilated cardiomyopathy, Hypertrophic cardiomyopathy (HCM), MAPK signaling pathway
Gene Summary:	<p>This gene encodes a member of the alpha-2/delta subunit family, a protein in the voltage-dependent calcium channel complex. Calcium channels mediate the influx of calcium ions into the cell upon membrane polarization and consist of a complex of alpha-1, alpha-2/delta, beta, and gamma subunits in a 1:1:1:1 ratio. Various versions of each of these subunits exist, either expressed from similar genes or the result of alternative splicing. Research on a highly similar protein in rabbit suggests the protein described in this record is cleaved into alpha-2 and delta subunits. Alternate transcriptional splice variants of this gene have been observed but have not been thoroughly characterized. [provided by RefSeq, Jul 2008]</p>