

Product datasheet for **RG217038**

STOX1 (NM_152709) Human Tagged ORF Clone

Product data:

Product Type:	Expression Plasmids
Product Name:	STOX1 (NM_152709) Human Tagged ORF Clone
Tag:	TurboGFP
Symbol:	STOX1
Synonyms:	C10orf24
Mammalian Cell Selection:	Neomycin
Vector:	pCMV6-AC-GFP (PS100010)
E. coli Selection:	Ampicillin (100 ug/mL)



[View online »](#)

ORF Nucleotide Sequence:

>RG217038 representing NM_152709
 Red=Cloning site Blue=ORF Green=Tags(s)

TTTTGTAATACGACTCACTATAGGGCGGCCGGGAATTCGTGCGACTGGATCCGGTACCGAGGAGATCTGCC
 GCC**CGCATCGCC**

ATGGCCCCGCCGTGCAGCTGGCGCCGGCTCGTGGCGCTAGTGTGTGCCGGCTGGAGGCGCAGAAGG
 CGCGGGGGCCGCGGAGGAGCCTGGTGGGCGCGCGGTGTTCCGCGCTTCCGTCGCGCCAACGCGCGCTG
 CTTCTGGAACGCGCGGCTGGCGCGCCGCCCTCGCGGCTGGCCTTCCAGGGCTGGCTGCGCGGGGGGTG
 CTGCTGGTGCAGCGCCCGCCCTGCCTGCAGGTGCTGCGCGATGCCTGGCGGCGCCGGCCCTGCGGC
 CGCGCGCGGCTTCCGCATCAGGCGGTGGGTGATGTCTTCCAGTGCAAATGAATCCAATAACTCAATC
 TCAGTTCGTACCTTTGGGTGAAGTTCCTTGTGTGCTATATCTGATATGAATACAGCTCAGATTGTAGTA
 ACGCAGGAATCACTTTTGGAGCGTTTGTGAAACATTACCCAGGCATTGCAATCCATCGGAAGATATTC
 TTTATACCACTCTGGGAACGCTGATTAAGAAAAGGAAGATTTATCACACTGGAGAAGGATACTTCATAGT
 TACTCCTCAGACTTACTTCATTACAAATACAACCACCCAGAAAAAAGAGAATGCTGCCATCAGATGAA
 AGTCGCCTGATGCCAGCTTCCATGACATATCTGGTGAGCATGGAGAGCTGTGCAGAGTCAGCCCAAGAGA
 ATGCTGCCCCATATCCCACTGTCACTTGTCCAGTGTTCGGGACATGCACACTCAGGATGTTCAAGGA
 AGCACCAGTTGCTGCAGAAGTACTAGGAAGAGTACAGAGGTCTTGGGGAATCCGTATCTTGGGTACAG
 AATGGGGCAGTTTCAGTGTCTGCGGAGCACCACATTTGTGAGAGCACCAACCTTTACCATACACAAGAG
 ATAAAGAAAAAGCAAGAAGTTTGGTTTTAGTCTCTTATGGCGCAGCTTATCTAGAAAGGAGAAGCCCAA
 AACAGAACACAGCAGTTTCTGCTCAGTTCACCTGAAGAATGGCCCGCCGAGATGAAGATGACTTG
 GACAATATCCCTCGAGATGTTGAACATGAGATAATCAAACGAATTAACCCATTTTACTGTTGACAATT
 TAATCAAAACACTGTCCTAATGCAAAAATACGAAGAACAGAAAAAATATAATAGCCAGGCCATCCAC
 TGACATGCTGACAATCGGCATGAATATCTTCAAAGAGGGGGTTAAGAAAAGGCAGGGTCTGTCTGCA
 AAACCTCAAGGGCAGGGCATTCTGAAGGGATAGACACAAGCCAGGAATCAGGGAAGTGAATTCAGC
 CAGGAAGCATTAGACTGGAGAAACACCCCAAGCTCCCTGTACACAGCCCATCCCAAGATTAAAAGCCC
 AAATGAAATGGTAGGTCAGAAACCCTTGGTGAGATTACAACAGTGTAGGTTCCCATTTGATTTACAAA
 AAGCGAATCAGTAATCCTTCCAGGGTTTGTCTCACCGAGGAAGCACAATATCAAAGGGCACAAAATTC
 AGAAGACGAGTGTCTGAAACCCAGCCAGACTGGACCAAAGGAAAAGCCTTCCAAAAGCCTAGGTCCTT
 GGATTCCTCAAGAATCTTGTGATGTTAAAGCCAAAGAGCCATATGCTGAACAACCTAATGATAAAATGGAA
 GCAGAATCCATTTACATAAATGACCCTACTGTCAAACCCATCAATGATGACTTCAGAGGTCACCTCTTCA
 GTCACCCTCAACAGAGCATGTTGCAAAATGATGGTAAATGCTGTCCCTTATGGAAGCATGTTGAGATA
 TGAAGTGTATGGTGGAGAAAATGAGGTAATTCCTGAAGTCTTGAAGAAAAGTCAATCCCCTTTGACAAA
 TTAGGGGAGACCAAACAGACTCCGCATAGTCTGCCATCACAGGTTGCCTCCTTTTTCAGACCGAACCCCT
 CTGCTTGTAGATTAGTGGATAACACAATACACCAGTTTCAAAATCTTGGCCTTTTGGATTACCCAGTTGG
 CGTGAACCCTTTAAGACAAGCTGCAAGACAAGACAAGACTCAGAAGAATTATTGAGAAAAGGATTTGTC
 CAGGATGCAGAGACTACAAGCCTAGAAAATGAACAGCTTCTAACGATGACCAGGCCTTGTATCAGAATG
 AAGTGAAGATGATGATGGTGCCTGTAGTTCATTATATCTAGAGGAGGATGACATTTCTGAGAATGACGA
 CTTACGTCAAATGCTGCCTGGCCACAGTCAGTATTCCTTCACAGGTGGAAGCCAGGGAAAATCATTAGGA
 AAACAAAAAGTGATTGAGAGATCTCTGACCGAGTACAACAGCACAATGGAGAGGGTTGAGTCTCAGGTGC
 TAAAAAGAAATGAATGCTACAAACCCACTGGGCTGCATGCTACCCAGGTGAAAGCCAAGAACCTAACCT
 CTCTGCTGAAAGTTGTGGCCTAAATTCAGGGGCCAGTTTGGTTTTAACTACGAAGAAGAACCAGTGTT
 GCTAAATGTGTACAGGCCTCAGCACCTGCTGATGAAAGAATCTTTGATTACTATAGCGCAAGAAAAGCCA
 GTTTTGAAGCTGAAGTACATAAGACACTATTGGTGACACAGGAAAGAAGCCAGCTAGCTGGAGTCAGAG
 TCCTCAGAATCAGGAAATGAGAAAACATTTCCACAAAAGTTCCAACTTTTCAACACTTCACATATGCCA
 GTGTTGGCTCAGGATGTCCAATATGAACACAGTCACTTGAAGGGACAGAAAATCACAGCATGGCAGGAG
 ATAGTGAATAGATTCTCCAGGACACAGAGTCTGGGATCTAATAATTCAGTCATTTTGGATGGACTAAA
 AAGAAGACAGAATTTTCTGCAAAATGTCGAAGGCACAAAGAGCAGTCAACCACTCACATCTAATTCCTTA
 CTACCGCTAACTCCAGTCATAAACGTT

ACGCGTACGCGGCCGCTCGAG - GFP Tag - GTTTAA

Protein Sequence: >RG217038 representing NM_152709
 Red=Cloning site Green=Tags(s)

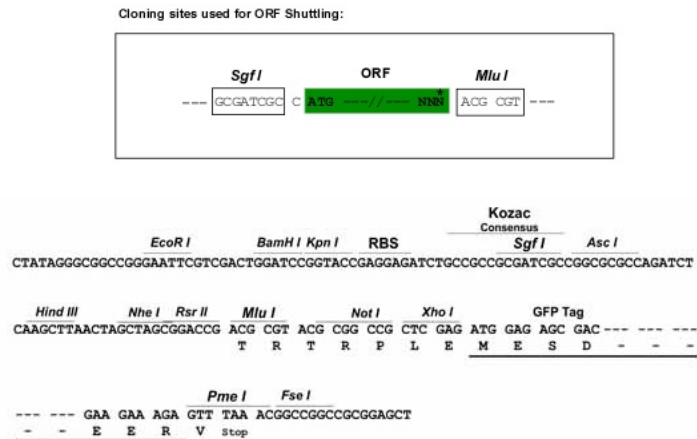
MARPVQLAPGSLALVLCRLEAQKAAGAAEPPGGRAVFRAFRRANARCFWNARLARAASRLAFQGWLRGV
 LLVRAPPAQLVLRDAWRRRALRPPRGFRIRAVGDVFPVQMNPI TQSQFVPLGEVLC CAISDMNTAQIVV
 TQESLLERLMKHYPGIAIPSEDILYTTLTGLIKERKIYHTGEGYFIVTPQTYFITNTTTQENKRMLPSDE
 SRLMPASMTYLVSMESCAESAQENAAPI SHCQSCQCFRDMHTQDVQEAPVAAEVTRKSHRGLGESVSWVQ
 NGAVSVSAEHHICESTKPLPYTRDKEKGKFGF SLLWRSLSRKEKPKTEHSSFSAQFPPEEWPVRDEDDL
 DNIPRDEVEHEIIKRINPILTVDNLIKHTVLMQKYEEQKKYNSQGTSTDMLTIGHKYPSKEGVKKRQGLSA
 KPQGGHRSRRDRHKARNQGSEFQPGSIRLEKHPKLPATQP IPRIKSPNEMVGQKPLGEITTVLGSHLIYK
 KRISNPFQGLSHRGSTISKGHKIQKTSDLKPSQTGPKEKPFQKPRSLDSSRIFDGKAKEPYAEQPNDKME
 AESIYINDPTVKPINDDFRGHLFSHPQQSMLQNDGKCCPFMESMLRYEVYGGENEVIPEVLRKSHSHFDK
 LGETKQTPHSLPSRGASFSDRTPSACRLVDNTIHQFQNLGLLDYVGVNPLRQAARQDKDSEELLRKGFV
 QDAETTSLENEQLSNDDQALYQNEVEDDDGACSSLYLEDDISENDLRLQMLPGHSQYSFTGGSQGNHLG
 KQKVIERSLTEYNSTMERVESQVLKRNECYKPTGLHATPGESQEPNL SAESCGLNSGAQFGFNYYYYEPPSV
 AKCVQASAPADERIFDYYSARKASF AEVIQDTIGDGTGKPPASWSQSPQNQEMRKHFPQKFQLFNTSHMP
 VLAQDVQYEHSHLEGTENHSMAGDSGIDSPRTQSLGSNNVIL DGLKRRQNFLQNVGKSSQPLTNSNL
 LPLTPVINV

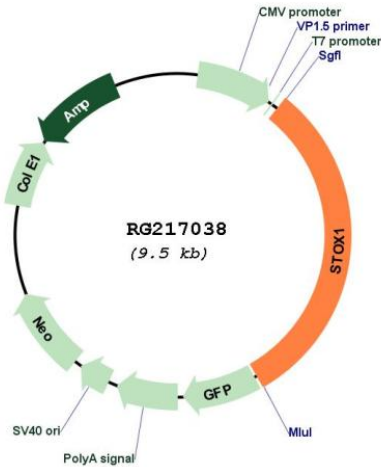
TRTRPLE - GFP Tag - V

Restriction Sites:

Sgfl-MluI

Cloning Scheme:



Plasmid Map:


ACCN: NM_152709

ORF Size: 2967 bp

OTI Disclaimer: The molecular sequence of this clone aligns with the gene accession number as a point of reference only. However, individual transcript sequences of the same gene can differ through naturally occurring variations (e.g. polymorphisms), each with its own valid existence. This clone is substantially in agreement with the reference, but a complete review of all prevailing variants is recommended prior to use. [More info](#)

OTI Annotation: This clone was engineered to express the complete ORF with an expression tag. Expression varies depending on the nature of the gene.

Components: The ORF clone is ion-exchange column purified and shipped in a 2D barcoded Matrix tube containing 10ug of transfection-ready, dried plasmid DNA (reconstitute with 100 ul of water).

Reconstitution Method:

1. Centrifuge at 5,000xg for 5min.
2. Carefully open the tube and add 100ul of sterile water to dissolve the DNA.
3. Close the tube and incubate for 10 minutes at room temperature.
4. Briefly vortex the tube and then do a quick spin (less than 5000xg) to concentrate the liquid at the bottom.
5. Store the suspended plasmid at -20°C. The DNA is stable for at least one year from date of shipping when stored at -20°C.

RefSeq: [NM_152709.5](#)

RefSeq Size: 3293 bp

RefSeq ORF: 2970 bp

Locus ID: 219736

UniProt ID: [Q6ZVD7](#)

Cytogenetics: 10q22.1

Gene Summary:

The protein encoded by this gene may function as a DNA binding protein. Mutations in this gene are associated with pre-eclampsia/eclampsia 4 (PEE4). Alternatively spliced transcript variants encoding different isoforms have been found for this gene. [provided by RefSeq, Sep 2009]