

Product datasheet for **RG217019**

CLASP1 (NM_015282) Human Tagged ORF Clone

Product data:

Product Type:	Expression Plasmids
Product Name:	CLASP1 (NM_015282) Human Tagged ORF Clone
Tag:	TurboGFP
Symbol:	CLASP1
Synonyms:	MAST1
Mammalian Cell Selection:	Neomycin
Vector:	pCMV6-AC-GFP (PS100010)
E. coli Selection:	Ampicillin (100 ug/mL)
ORF Nucleotide Sequence:	>RG217019 representing NM_015282 Red=Cloning site Blue=ORF Green=Tags(s)

TTTTGTAATACGACTCACTATAGGGCGGCCGGAATTCGTCGACTGGATCCGGTACCGAGGAGATCTGCC
GCC**CGATCGCC**

ATGGAGCCTCGCATGGAGTCTGCCTGGCGCAGGTGTTGCAGAAGGATGTGGGAAACGATTGCAGGTTG
GCCAAGAAGTGTAGACTATTTCTCAGACAAACAGAAGTCTGCTGACCTTGAGCATGACCAGACCATGTT
AGATAAAGTGTGGATGGACTTGTACCTCTGGGTGAAGTCTAGCAATTACAAGTGGTCTGCTGGGC
ATGGACATCTGTCCGCCCTGGTACCCGGCTGCAGGATCGGTTCAAGGGCAGATCGGCACAGTGTGC
CAAGTCTAATAGACAGACTAGGAGATGCTAAAGACTCTGTGAGGGAGCAGGACCAAACTCTGCTGCTAAA
GATCATGGATCAAGCTGCTAATCCCAAGTACGTATGGGACAGAATGCTTGGAGGCTTCAAACACAAGAAT
TTCCGTAATCGAGAAGGCATCTGTCTCTGCCTTATAGCAACACTCAATGCCTCTGGAGCAGACAGCTTAA
CACTAAGCAAGATTGTGCCACATATATGCAACTTACTTGGAGATCCAAACAGCCAGGTTTCGAGATGCAGC
AATAAACAGCTTAGTGGAATTTACAGACATGTAGGAGAAGTGTGAGGGCAGATCTCAGTAAAAAGGA
TTGCCACAGTCCCGTTGAATGTAAATTTTACAAAATTTGATGAAGTCCAGAAATCTGGAACATGATAC
AATCTGCAATGATAAAAATTCGACGATGAAGATTCTGTGGATGGTAACAGACCTTCTCTGCTAGTTC
TACATCATCCAAGGCTCCACCAAGTCTCGGAGAAACGTTGGAATGGGAACCCCGCCGCTTGGTTCA
TCCACCCTGGATCCAAGTCTTCAGCTGCAAAAGAAGGAGCTGGTCTGTTGATGAAGAGGATTTTATTA
AAGCATTGATGATGACTCTGTAGTACAGATTTATCCAGCCGAGACCTTGGGAATCCATAAACAAAAT
TAGGGAATATTATCTGATGACAAGCATGATTGGGAGCAGAGAGTAAATGCTCTAAAAAAGATTAGATCT
TTACTTTTGGCTGGTGTGCTGAGTATGATAACTTCTTTCAACATTTGCGTCTTTTGGATGGAGCCTTTA
AACTCTGCTAAGGACCTGCGTCTCAGGTAGTGCAGGAGGCTTGTATCACGTTGGGCATCTGTCATC
AGTTCTGGGGAATAAGTTTGACCATGGAGCTGAAGCCATTATGCCAACTATCTTTAATTTAATCCAAAC
AGTGCCAAAATATGGCCACATCTGGTGTGTAGCTGTTAGGTTAATTATTCGGCACACACATCCCTA
GGTTAATACCTGTCATAACAAGCAACTGTACCTTAAGTCTGTCGAGTTAGAAGGCGCTGTTTTGAATT
TTTAGATTTGCTTTTACAAGAATGCGACACATTCAGTATTAGCTGAAACA



[View online »](#)

ATAAAGAAGGAATACATGATGCTGATTCCGAAGCAAGAATAGAAGCCAGAAAATGTTACTGGGGTTTCC
ACAGTCACTTCAGCAGAGAAGCAGAGCACTTGTACCACACCTTGGAGTCTCCTACCAGAAAAGCCCTGCA
GTCCCACCTGAAGAACTCAGACAGCATAGTGTCTCTGCCCTCAGTCAGACCCTCATCTTCCAGCTCTCAA
GAGAGTCTAAATCGTCCGCTGTCTGCCAAAAGAAGTCTACTGGAAGTACCACATCTAGAGCTTCTACAG
TTAGTACCAAATCTGTGTCAACGACTGGTCCCTCCAGCGATCTCGAAGTGATATTGATGTGAACGCAGC
AGCCAGTGCCAAATCAAAGTCTCCTCATCTTCGGGCACGACGCCCTTTCAGCTCTGCAGCAGCTTTGCCCT
CCAGGGTCATACGCATCCTTAGTTCGGATCCGCACAAGACGGCAAAGCTCTGGGAGTGCCACCAACGTCG
CCTCTACACCTGATAACCGGGGCCGAGTCGCGCTAAAGTGGTTTACAGTCCCAGCGATCCAGATCTGC
TAATCCTGCTGGTGTGGCAGCCGGTCAAGTTCGCCAGGAAAATTGTTGGGAAGTGGTTATGGTGGACTT
ACTGGGGCTCCTCACGAGGCCACCTGTGACACCGTCTTTCAGAAAAGCGAAGCAAGATCCCAGGAGCC
AGGGATGTAGCCGGAAACAAGTCAAACCGAATAGGATTAGCACGGAGCAGCCGTATCCCTCGACCCAG
CATGAGTCAGGGGTGCAGCCGCGATACCAGCCGTGAGAGCAGCCGAGATAACAAGCCCTGCTCGGGCTTT
CCTCCACTTGATCGTTTGGCTTGGCCAGCCAGGAAGAATACCTGGTCTGTGAATGCCATGAGAGTTC
TGAGCACAAAGTACAGATCTTGAAGCTGCTGTTGCTGATGCTTTGAAGAAGCCTGTGAGGAGGAGATATGA
GCCGTATGGGATGTATTCTGACGATGATGCCAACAGTGTGCCTCAAGTGTTCGCTGAGCGCTCATAT
GGCTCCAGGAATGGTGGCATTCCCATTATCTGCGGCAGACTGAGGATGTAGCAGAAGTTCTCAACCACT
GTGCTAGTTCAAACCTGGTCAGAAAAGGAAAGGGCTTCTGGGCCTGCAGAACTTACTGAAGAGCCAAAAG
AACACTGAGTCGAGTTGAACTGAAAAGGTTGTGTGAGATCTTCACTCGGATGTTTGTGACCCCTCATAGC
AAGAGAGTTTTTCAGTATGTTTTGGAGACTCTTGTGGATTTTATAATAATTCATAAGGATGATTTACAAG
ACTGGCTTTTTGTTCTTCTCACACAATTACTTAAGAAAATGGGAGCAGATTTACTTGGATCTGTGCAAGC
AAAAGTTCAAAGGCTCTAGATGTCACAAGGGACTCCTTCCATTTGATCAACAATTTAACATTTTGATG
AGATTTATTGTGGATCAAACCTCAAACCTCAAAGTCAAAGTTCGAATCCTGAAAATCTTAGAAT
CTCTGGCCAGACAGATGGATCCAACAGATTTTGTAAACTCTAGTGAGACAAGGCTTGTCTTTCTAGAAT
CATAACCTGGACAACAGAACCAAAGAGTTCAGACGTGAGAAAAGGCAGCACAGATTGTGCTAATCTCTCTG
TTTGAATTGAATACTCCTGAATTTACCATGTTACTTGGTGCCTTGCCAAAACATTCCAGGATGGTGCCA
CCAAACTCCTGCACAACCACCTCAAGAATTCAGTAACACCAGTGTGGGCTCTCCAAGCAATACGATTGG
CCGGACGCCCTCCGACACACCAGCAGCAGGACCAGCCCTGACCTCACCCACCAACTGTTCCCATGGG
GGTCTGTCTCCAAGTGGTTATGGGGTTGGAGTGCCGACGGGTTAGCGAAGCACCCACCTCCCTTTTCTC
AGCCTAACTCCATCCCCACCGCTCCCTCCACAAGGCTCTCAGGCGCTTACTCTCCAGCATGCTGGA
CTATGATACAGAGAACCTGAACTCTGAAGAAATCTATAGTTCTCTACGTGGAGTTACAGAAGCCATTGAA
AAGTTTAGTTTTCGAAGCCAAGAAGATCTGAATGAGCCAATTAACGAGATGGCAAAAAGGAGTGTGATA
TTGTGTCCCGCATGGGGCGCTGCCTCCCTGCCACTGAGGGCCGGGGGGTAGTGAAGTAGAAGGAGG
CCGGACAGCTCTGGATAACAAGACCTCACTACTCAACACCCAGCCTCCGCGCGCCTTCCCGGGGCCGCG
GCGCGAGACTACAACCCGTACCCCTACTCAGATGCCATCAACACCTACGACAAGACCGCCCTGAAAGAGG
CTGTGTTTCGATGACGACATGGAGCAGCTTCGAGACGTGCCCATCGACCATCTGACCTGGTGGCTGACCT
TCTGAAAGAGCTGTCCAACCACAATGAGCGAGTGGAGGAACGGAAGGGAGCCCTGCTGGAGCTGTCAAG
ATCACGCGGGAAGACAGCCTTGGTGTCTGGGAGGAGCACTTCAAGACCATCTGCTCCTGCTGTGGAGA
CCCTTGGAGACAAAGACCATTCAATTCGAGCACTGGCGTTAAGAGTTTTGAGGAAATTTGAGAAATCA
ACCAGCAAGATTTAAAACTACGCCGAGCTGACGATTATGAAGACTCTGGAAGCCCAAAAGACTCCCCT
AAGGAGGTGGTGAGAGCGCTGAGGAGGCTGCGTCCACACTGGCCAGTTCCATCCACCCGAGCAGTGCA
TCAAGGTGCTCTGCCCATCATCCAGACGGCCGACTACCCCATCAACCTTGTGCCATCAAGATGCAGAC
CAAAGTCGTGAGAGGATCGCAAAGGAGTCATTGCTGCAGCTCCTTGTGCACATCATCCAGGCTTGTG
CAGGGTTATGACAACACCGAAAGTAGTGTGCGTAAGGCCAGCGTGTTCCTTAGTGCCAATTTATTCG
TAATCGGAGAAGACCTGAAACCTCACCTTGACAGCTCACAGGGAGCAAGATGAAGCTACTAACTTATA
CATAAAGAGGGCCAGACCACCAACAGCAACAGCAGCTCCTCCTCGATGTCTCCACGCACAGC

ACGCGTACGCGGCCGCTCGAG - GFP Tag - GTTTAA

Protein Sequence: >RG217019 representing NM_015282
 Red=Cloning site Green=Tags(s)

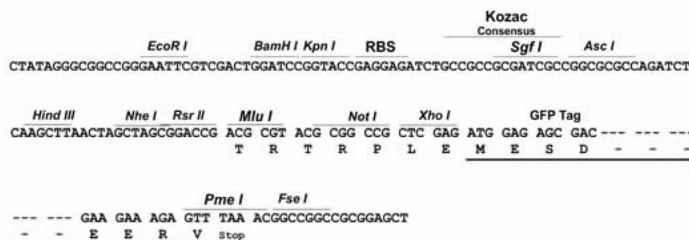
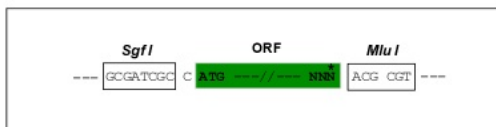
```
MEPRMESCLAQVLQKDVGKRLQVQELIDYFSDKQKSADLEHDQTMLDKLDVGLATSWVNSSNYKVLLG
MDILSALVTRLQDRFKAQIGTVLPSLIDRLGDAKDSVREQDQLLLKIMDQAANPQYVWDRMLGGFKHKN
FRTREGICLCL IATLNASGAQTLTLSKI VPHICNLLGDPNSQVRDAAINSLVEIYRHVGERVRADLSKKG
LPQSRNLVIFTKFDEVQKSGNMIQSANDKNFDEEDSV DGNRPPSSASSTSSKAPSSRRNVGMGTTRRLGS
STLGSKSSAAKEGAGAVDEEDFIKAFDDVPVQIYSSRDLEESINKIREILSDDKHDWEQVRNALKKIRS
LLLAGAAEYDNFFQHRLRLDGAFLKSAKDLRSQVVREACTLGLHSSVLGNKFDHGAEAIMPTIFNLIPN
SAKIMATSGVVAVRLIIRHTHIPRLIPVITSNCTSKSVAVRRRCFEFLDLLLQEWQTHSLERHISVLAET
IKKGIHDADSEARIEARKCYWGFHSHFSREAEHLYHTLESSYQKALQSHLKNSDSIVSLPQSDRSSSSSQ
ESLNRPLSAKRSPTGSTSRASTVSTKSVSTTGS LQRSRSDIDVNAAASAKSKVSSSSGTTPFSSAAALP
PGSYASLGRIRTRQSSGSATNVASTPDNRGRSRAKVVSQSQRSRANPAGAGSRSSSPGKLLGSGYGGL
TGGSSRGPPVTPSSEKRSKIPRSQGCSTSPNRIGLARSSRI PRPSMSQGCSDRTSRESSRDTSPARGF
PPLDRFGLGQPGRIPGSVNAMRVLSTSTDL EAAVADALKKPVRRRYEPYGMYSDDDANS DASSVCSERSY
GSRNGGIPHYLRQTEDVAEVLNHCASSNWSERKEGLLGLQNLK SQRTL SRVELKRLCEIFTRMFADPHS
KRVFSMFLETLVDFII IHKDDLQDWLFVLLTQLLKKMGADLLGSVQAKVQKALDVTDRSFPFDQFNILM
RFIVDQTQTPNLKVKVA I LKYIESLARQMDPTDFVNSSETRLA VSRITWTTEPKSSDVRKAAQIVLISL
FELNTPFTMLL GALPKTFQDGATKLLHNHLKNSNTSVGSPSNTIGRTPSRHTSRTSPLTSPTNCSHG
GLSPSRLWGWSADGLAKHPPPF SQPNSIPTAPSHKALRRSYSPSMLDYDTENLNSEEIYSSLRGVTEAIE
KFSFRSQEDLNEPIKRDGKKECDIVSRDGAASPATEGRGGSEVEGGRTALDNKTSLLNTQPPRAFPGPR
ARDYNPYPSDAINTYDKTALKEAVFDDMEQLRDVPIDHSDLVADLLKELSNHNERVEERK GALLELLK
ITREDSLGVWEEHFKTILLLLLETLGDKDHSIRALRVLREILRNQPARFKNYAELTIMKLEAHKDSH
KEVVRAAEAASTLASSIHPEQCKIVLCP I IQTADYPINLAAIKMQTKVVERIAKESLLQLLDVIIPGLL
QGYDNTESSVRKASVFCLVAIYSVIGEDL KPHLAQLTGSKMKLLNLYIKRAQTTNSSSSSSDVSTHS
```

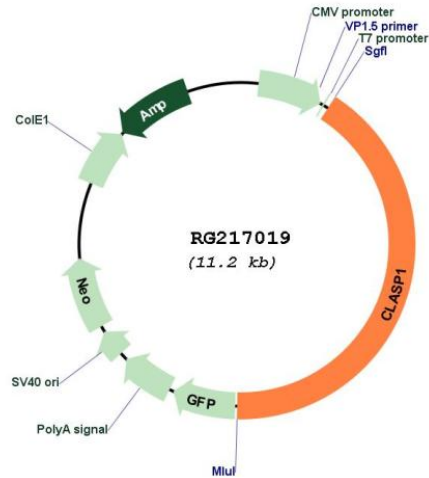
TRTRPLE - GFP Tag - V

Restriction Sites: SgfI-MluI

Cloning Scheme:

Cloning sites used for ORF Shutting:



Plasmid Map:


ACCN: NM_015282

ORF Size: 4614 bp

OTI Disclaimer: Due to the inherent nature of this plasmid, standard methods to replicate additional amounts of DNA in *E. coli* are highly likely to result in mutations and/or rearrangements. Therefore, OriGene does not guarantee the capability to replicate this plasmid DNA. Additional amounts of DNA can be purchased from OriGene with batch-specific, full-sequence verification at a reduced cost. Please contact our customer care team at custsupport@origene.com or by calling 301.340.3188 option 3 for pricing and delivery.

The molecular sequence of this clone aligns with the gene accession number as a point of reference only. However, individual transcript sequences of the same gene can differ through naturally occurring variations (e.g. polymorphisms), each with its own valid existence. This clone is substantially in agreement with the reference, but a complete review of all prevailing variants is recommended prior to use. [More info](#)

OTI Annotation: This clone was engineered to express the complete ORF with an expression tag. Expression varies depending on the nature of the gene.

Components:	The ORF clone is ion-exchange column purified and shipped in a 2D barcoded Matrix tube containing 10ug of transfection-ready, dried plasmid DNA (reconstitute with 100 ul of water).
Reconstitution Method:	<ol style="list-style-type: none">1. Centrifuge at 5,000xg for 5min.2. Carefully open the tube and add 100ul of sterile water to dissolve the DNA.3. Close the tube and incubate for 10 minutes at room temperature.4. Briefly vortex the tube and then do a quick spin (less than 5000xg) to concentrate the liquid at the bottom.5. Store the suspended plasmid at -20°C. The DNA is stable for at least one year from date of shipping when stored at -20°C.
RefSeq:	NM_015282.3
RefSeq Size:	8089 bp
RefSeq ORF:	4617 bp
Locus ID:	23332
UniProt ID:	Q7Z460
Cytogenetics:	2q14.2-q14.3
Gene Summary:	CLASPs, such as CLASP1, are nonmotor microtubule-associated proteins that interact with CLIPs (e.g., CLIP170; MIM 179838). CLASP1 is involved in the regulation of microtubule dynamics at the kinetochore and throughout the spindle (Maiato et al., 2003 [PubMed 12837247]).[supplied by OMIM, Mar 2008]